



# Samsung WB150F Memory Card Replacement

This is a streamlined guide on how to replace...

Written By: Keith Albergaria



## INTRODUCTION

This is a streamlined guide on how to replace Samsung WB150F Memory Card. There are no tools needed for this replacement. There are many parts at risk of being damaged, ensure that you follow the procedure with care. The time needed to complete this procedure is approximately 1 to 2 minutes.

### Step 1 — Memory Card



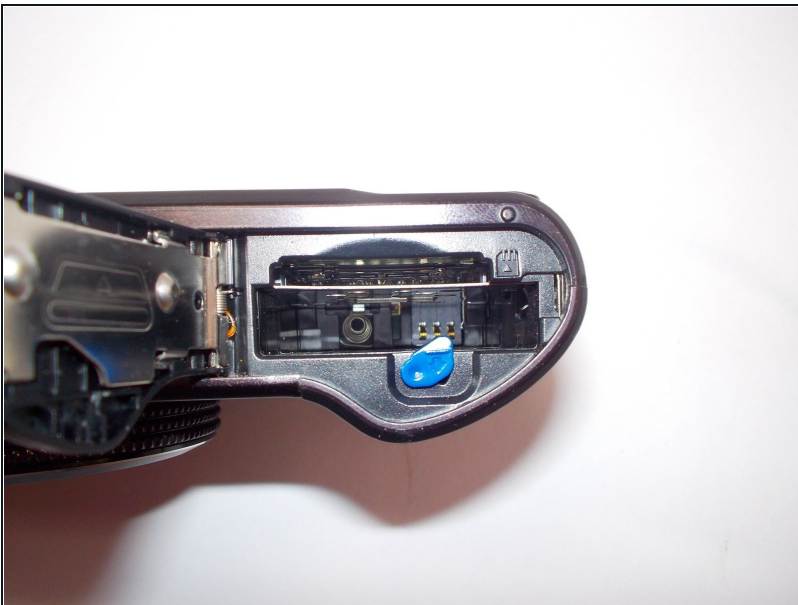
- Flip the camera upside-down so that the compartment with the battery and memory card is facing you.

## Step 2



- Using your finger, slide the plastic lock-tab to the left.
- The compartment should swing open.

## Step 3



- ① The larger cavity is for the battery.
- ① The small thin cavity is where the memory card goes.
- Press lightly on the memory card to eject it from the camera.

---

To reassemble your device, follow these instructions in reverse order.