



Samsung Galaxy S Blaze Frame Replacement

Prerequisite Only

Written By: Daniell Gianelloni



INTRODUCTION

This shows you how to remove or replace the frame in a Samsung Galaxy S Blaze phone.



TOOLS:

- [Phillips #00 Screwdriver](#) (1)
 - [iFixit Opening Tool](#) (1)
-

Step 1 — Backplate



- Turn the phone over so the back is facing you.

Step 2



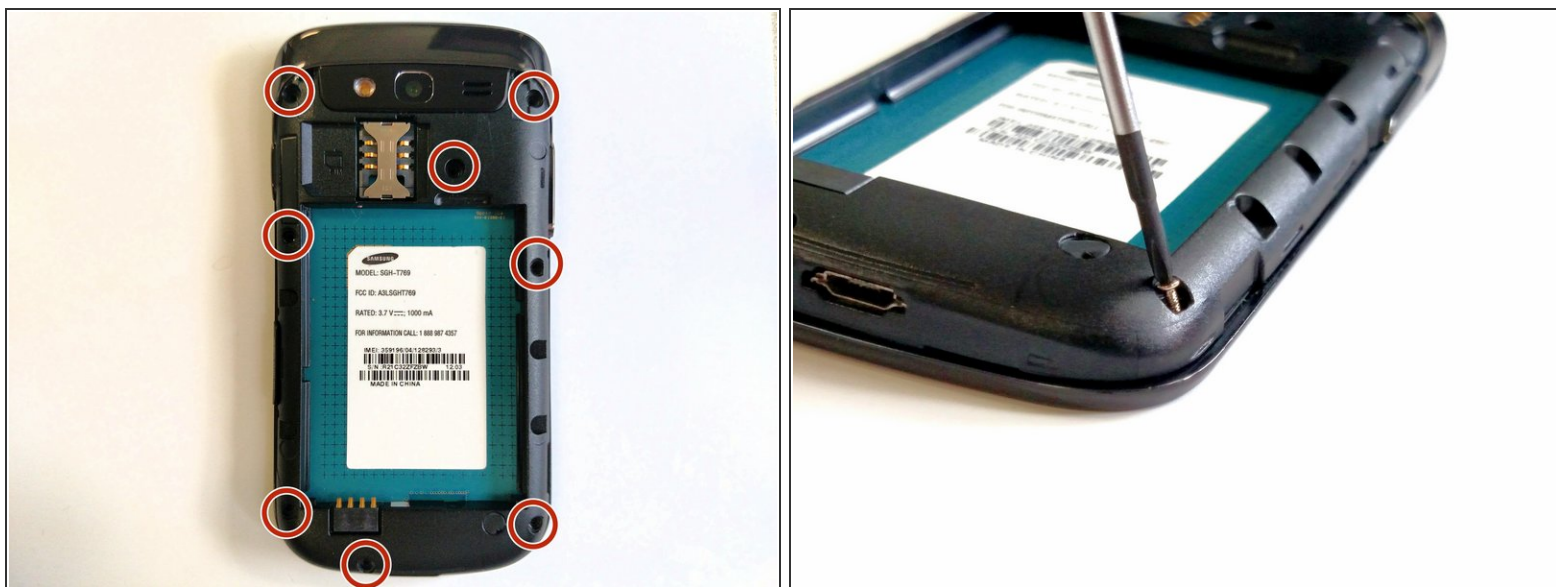
- Hold phone to see notch on the side of the back plate.
- Apply pressure to the back plate to remove the back plate.

Step 3 — Battery



- Using your index finger, pull the top of the battery. Then pull the battery towards you.
- The battery will fall out easily.


Step 4 — Frame



- Remove the eight 4 mm screws from the frame using a Phillips #00 screwdriver.

Step 5



- Insert the blue plastic opening tool between the frame and the device.
 - Push down on the tool to raise up the frame from the device.
 - Work around the device until the frame is completely off.
-  You may need to use some force to pry the frame off of the device.

To reassemble your device, follow these instructions in reverse order.