



Ryobi P202 Gear Select Switch Replacement

How to replace the gear select switch from the Ryobi P202. It is a two position switch with the numbers 1 and 2 printed on it.

Written By: Joseph Eckstein



INTRODUCTION

This guide demonstrates how to open the drill and remove the gear select switch. Removing the gear select switch does not require disassembling any of the internal electronics of the drill, but it is recommended to remove the battery to reduce shock hazard.




TOOLS:

- [T10 Torx Screwdriver](#) (1)
-

Step 1 — Battery



 The battery can shock you. Only touch plastic, non-conductive components.

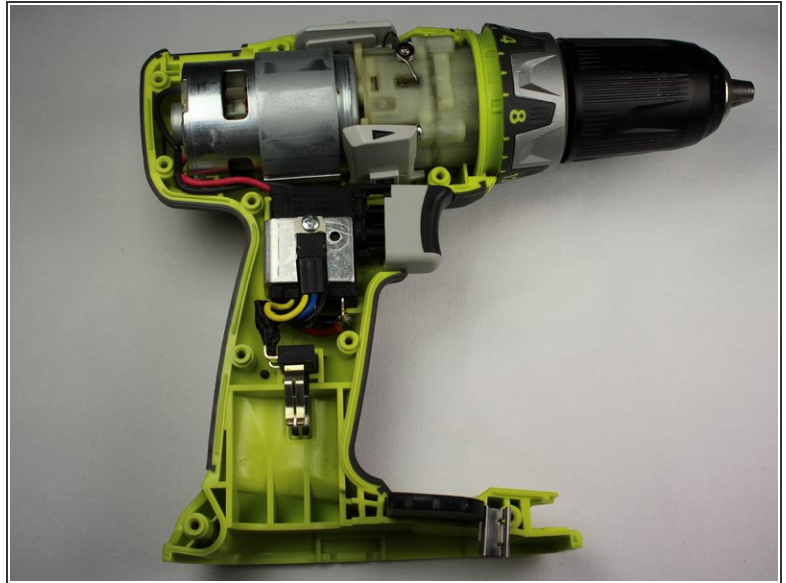
- Detach the battery unit from the drill body by pressing the battery release buttons on both sides of the unit and pulling outwards.

Step 2 — Right Side Case



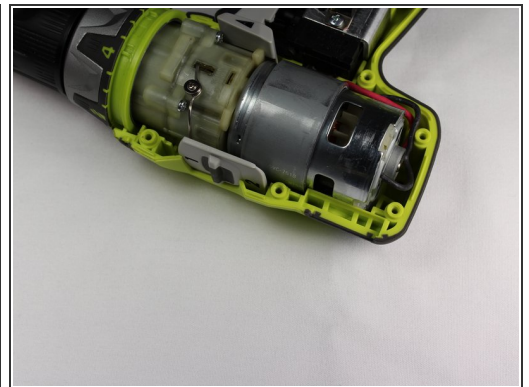
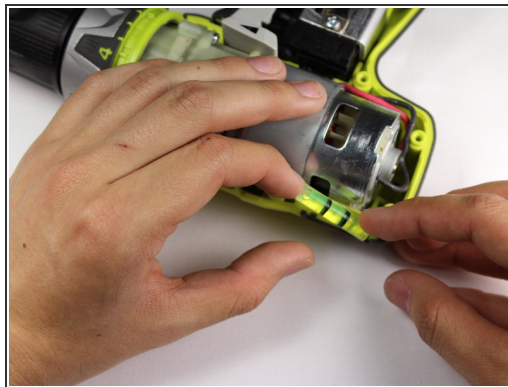
- Use a Torx T10 screw driver to unscrew all ten 13.5 mm screws from the drill casing to gain access to the interior.

Step 3



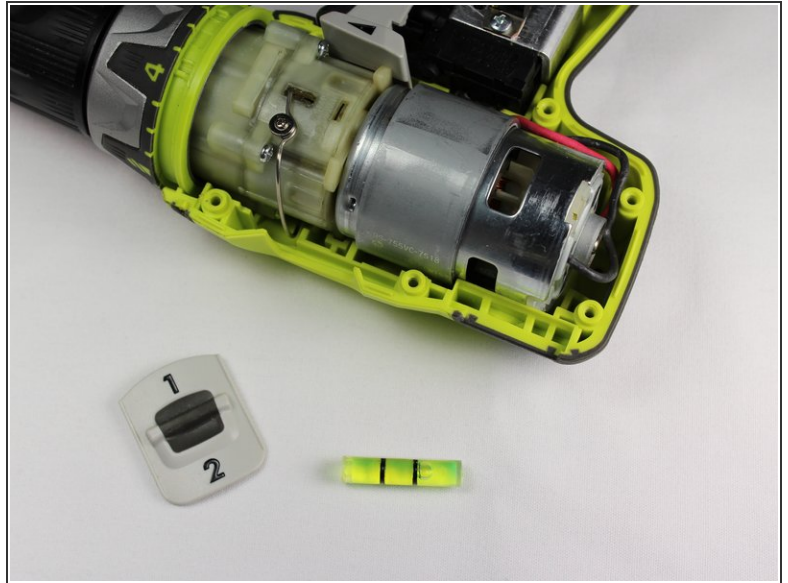
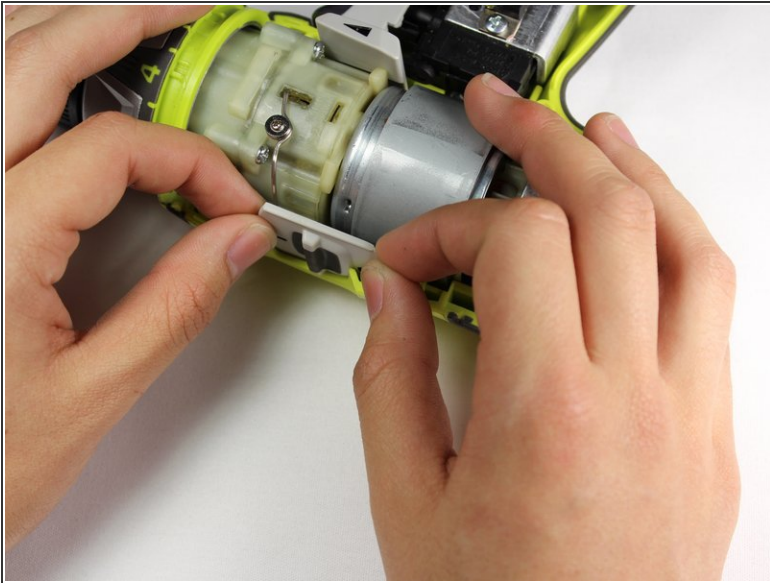
- Gently lift the casing from the drill body.
 - Take the casing completely off the drill body to gain access to the interior of the drill.
- i** The Ryobi P202 casing has Part #: 200690001

Step 4 — Level Gauge



- Rotate the Drill 180 degrees so that the top is facing you.
 - Lift the level gauge out from the top corner of the drill.
- i** The level gauge is Part #: 3000909

Step 5 — Gear Select Switch



- Lift the gear switch upwards from the top of the drill head.

i The gear switch is Part #: 341098001

To reassemble your device, follow these instructions in reverse order.