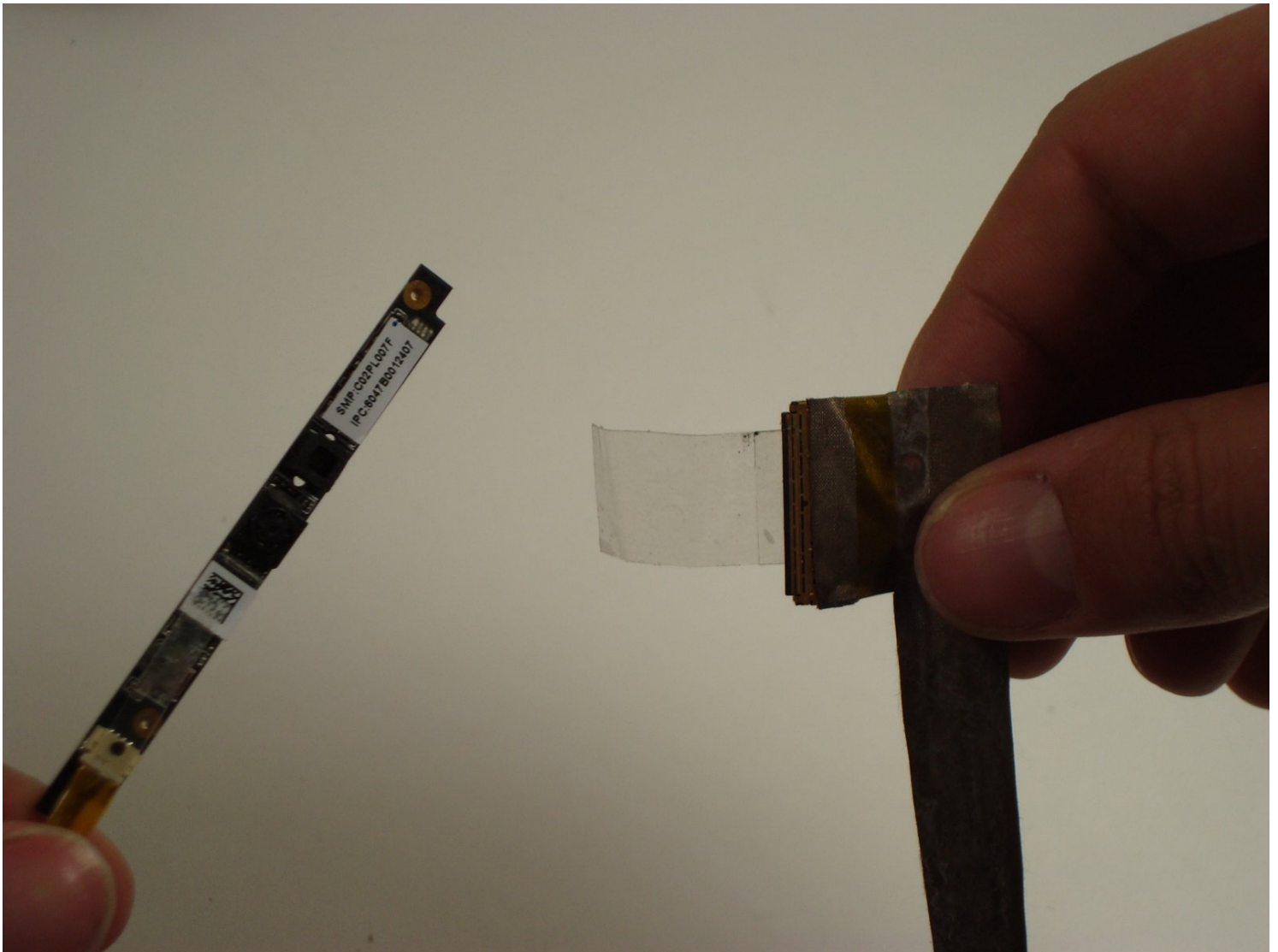




Compaq Mini 110 Webcam Replacement

Laptops commonly come with a built in webcam,...

Written By: alea



INTRODUCTION

Laptops commonly come with a built in webcam, and sometimes they may malfunctioning, requiring replacement. In this guide you will be guided step by step through the process of replacing the webcam.

The laptop webcam in question is the unspecified HP Webcam with an integrated microphone from the HP Compaq Mini 110.

There is no specific set of skills required for this fix, but do note that a slight learning curve may appear in the case of knowing what to pullout. Do not worry, as it is a fairly easy and simple process once you get the hang of it.

TOOLS:

Spudger (1)

Phillips #0 Screwdriver (1)

Step 1 — Battery



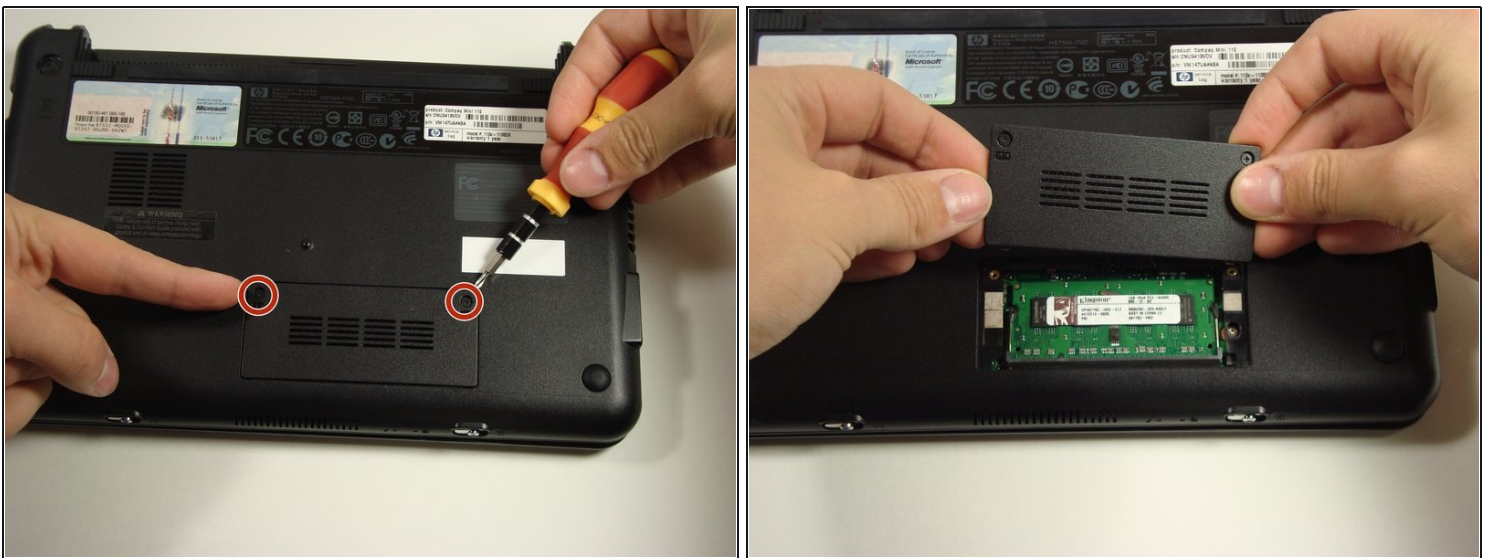
- Locate the battery and the battery tabs on the bottom of the Compaq Mini.

Step 2



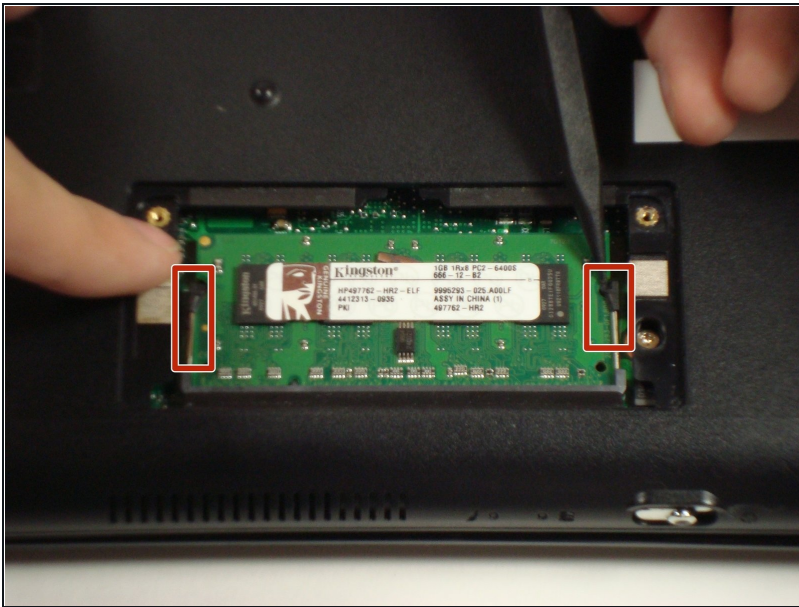
- Push both tabs inward simultaneously and slide the battery out.

Step 3 — RAM



- Use a Philips #0 screwdriver to unscrew the two screws covering the memory compartment on the bottom of the laptop and remove the cover.

Step 4



- Push out the side tabs simultaneously and pull out the old RAM module.
- ☑ When inserting a new RAM stick, be sure to evenly insert the gold pins in the same orientation that the old module was removed. While sliding the module in, press the side tabs in place.

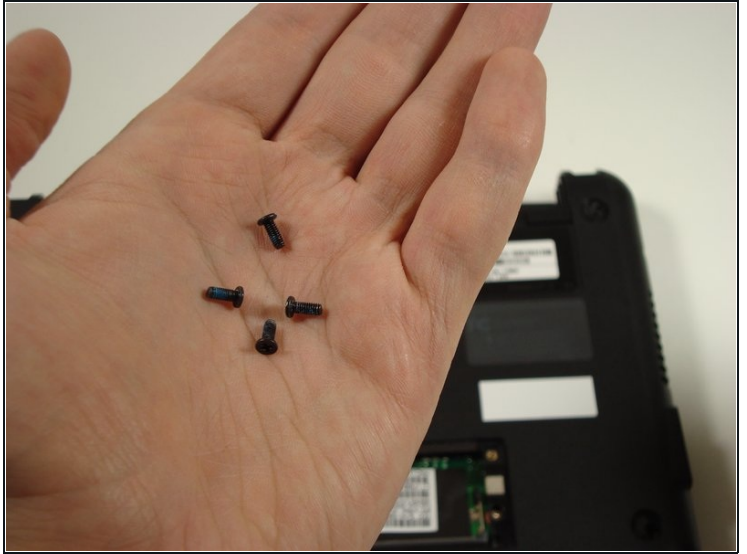
Step 5 — Keyboard



- Remove the rubber pads located on the corners of your Compaq Mini.

⚠ There may be junk underneath it. This is residue left from the glue that held on the rubber pad. Just scrape it away to find the screw.

Step 6



- Unscrew all the corner screws. There are four total, one under each rubber pad.

Step 7



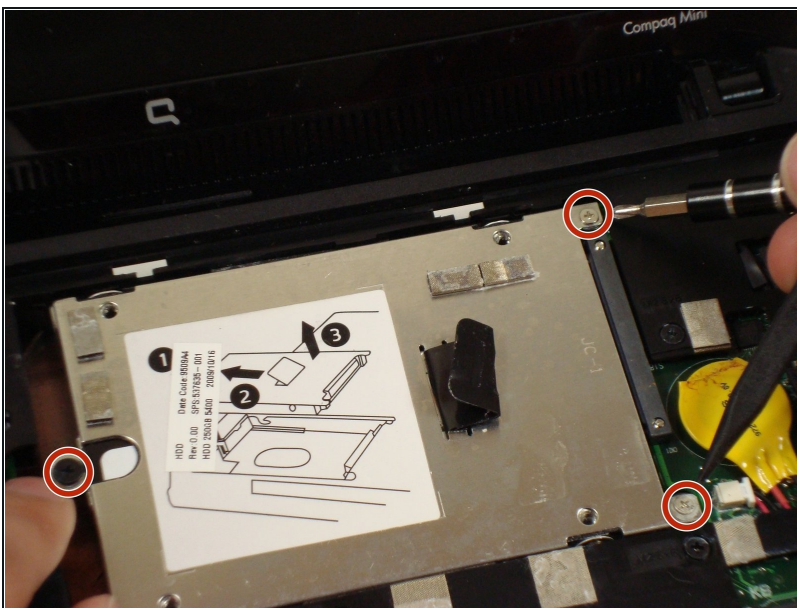
- Unscrew the screw for the bottom case located in the RAM compartment.

Step 8



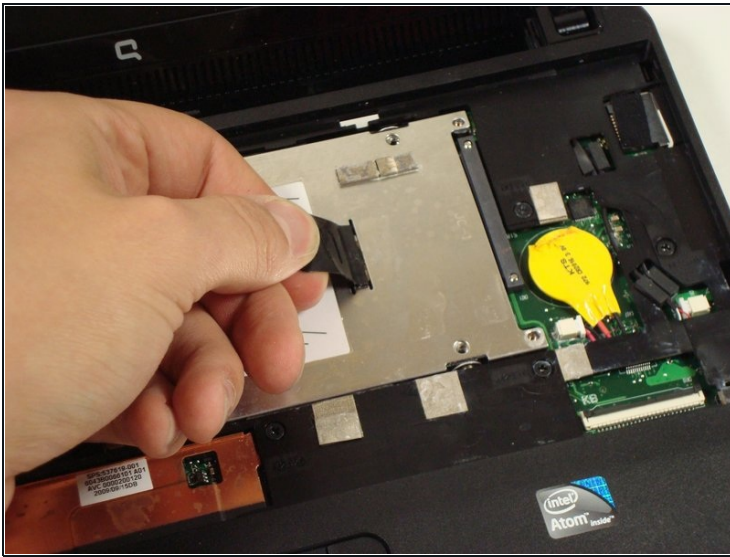
- Remove the three screws in the silver tabs at the back of the keyboard.
- ① These are located at the back of the base under the screen.
- Lift the keyboard away from the laptop.

Step 9 — Hard Drive



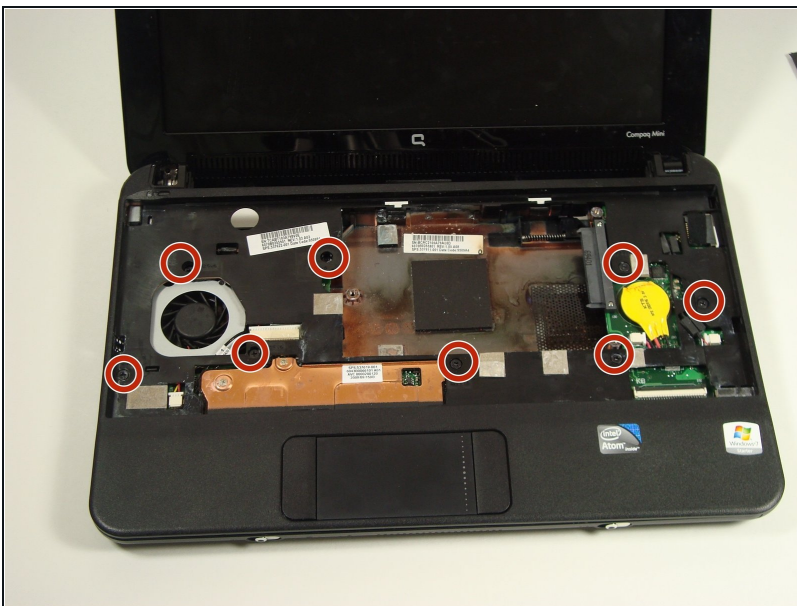
- Remove the three screws holding the panel in place.

Step 10



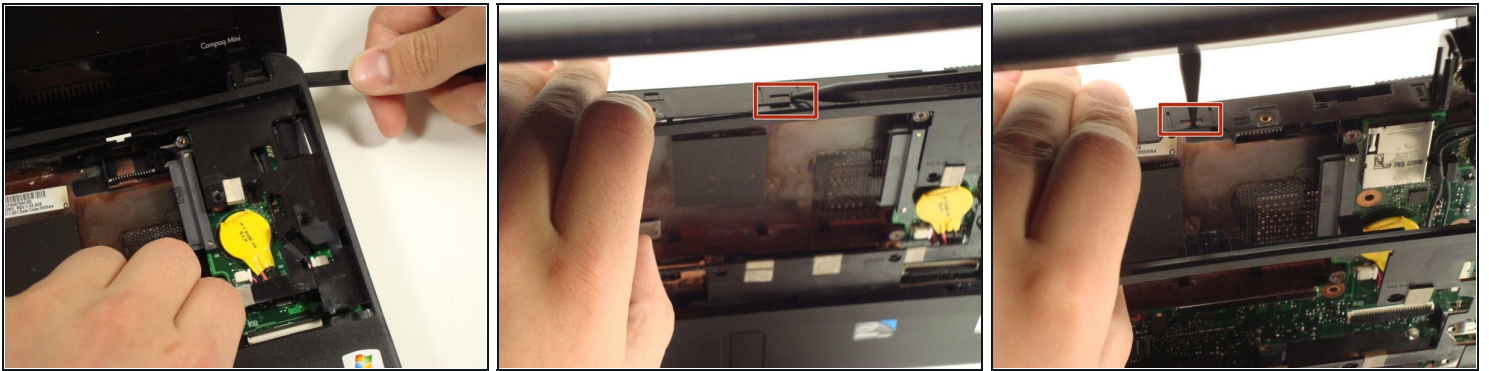
- Pull up on the tab to remove the hard drive.

Step 11 — Top Cover



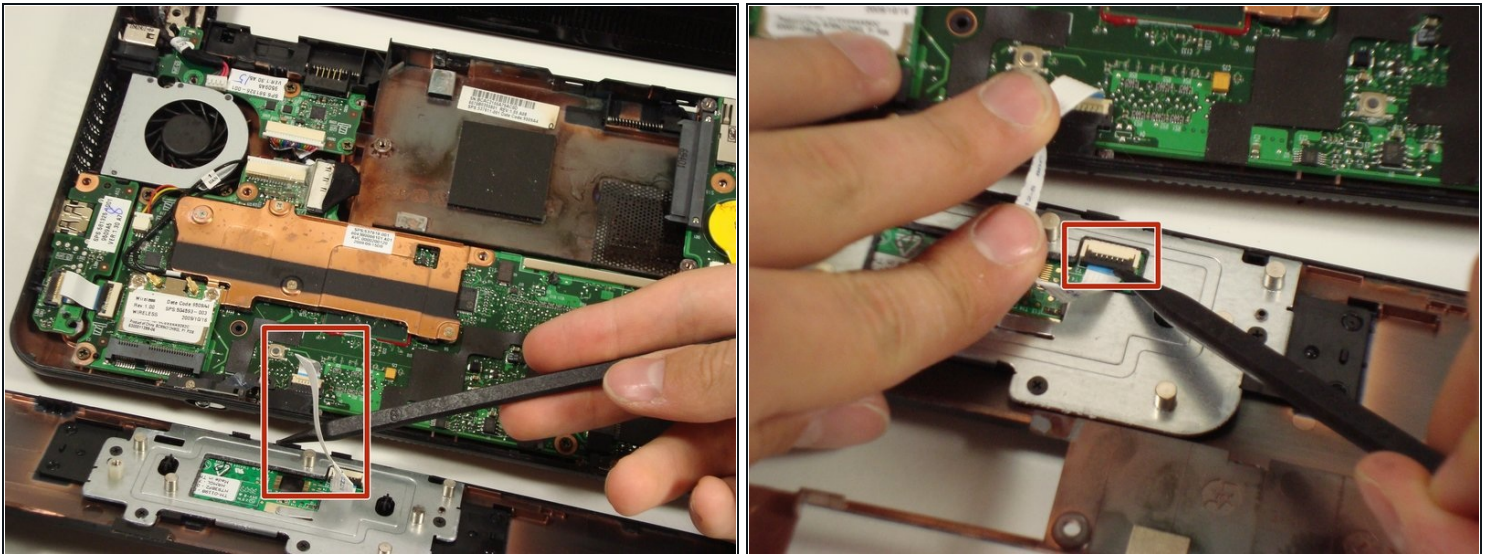
- Remove the eight screws that are from the plastic top cover.

Step 12



- Pry up the top plastic cover using a spudger.
- These two tabs under the screen need to be pushed in with a spudger.

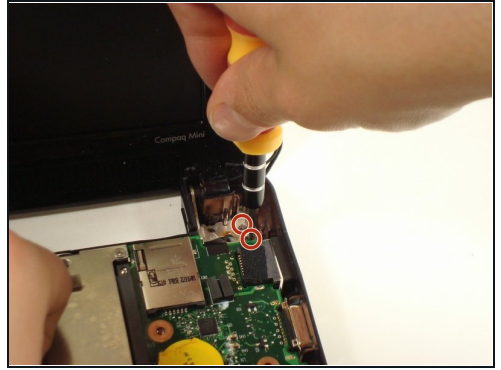
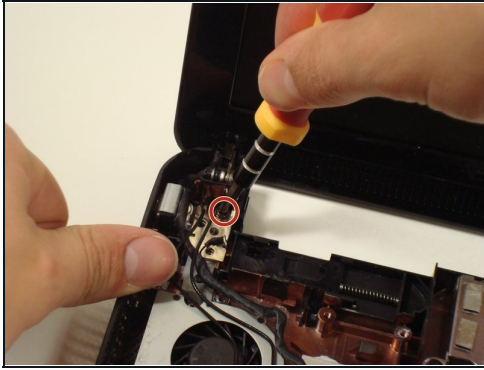
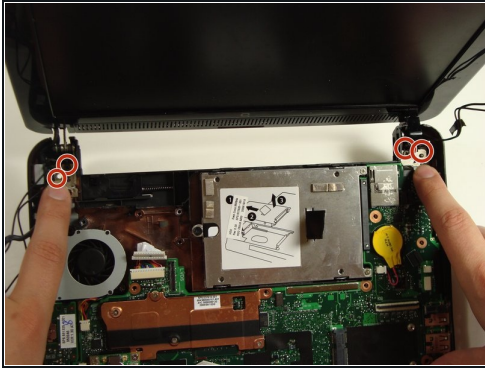
Step 13



- Remove the cable by carefully pulling it up.

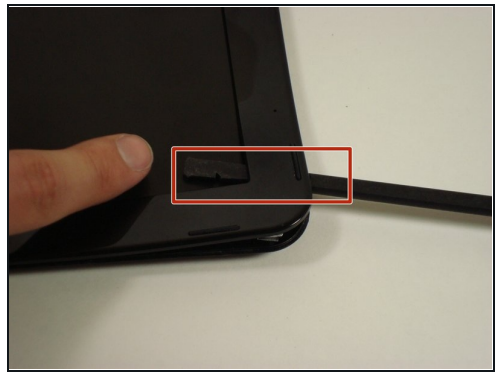
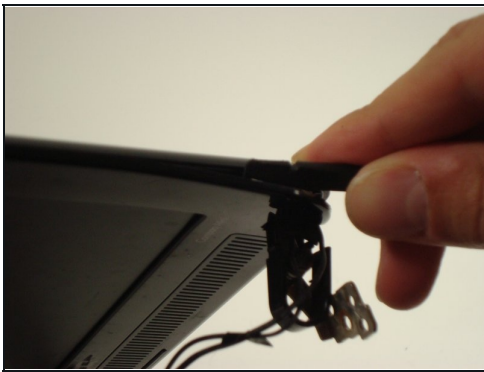
⚠ Be careful when lifting up the cover because the track pad is still attached.

Step 14 — Display Assembly



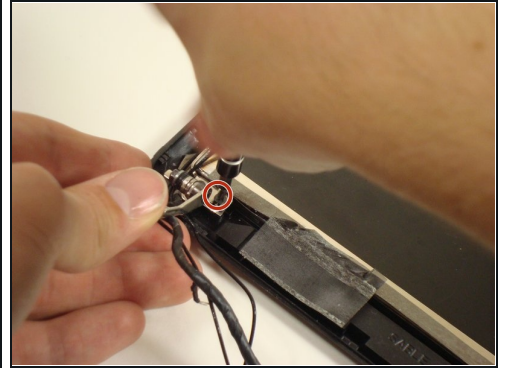
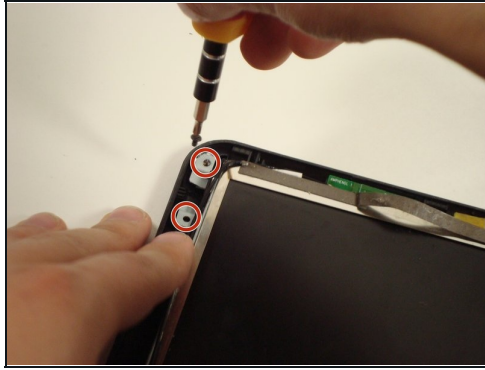
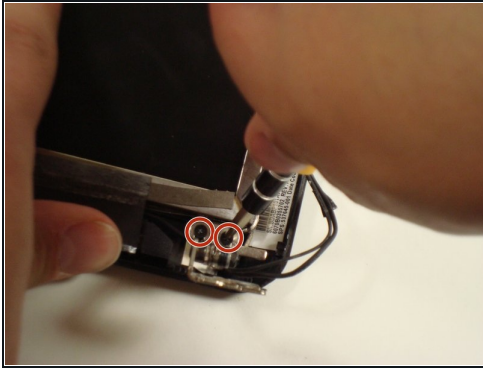
- Remove the four screws that keep the bottom of the hinges attached to the base.

Step 15



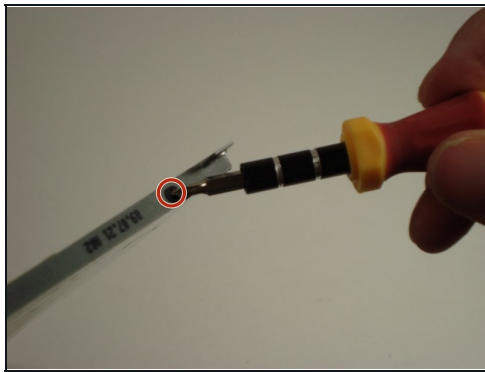
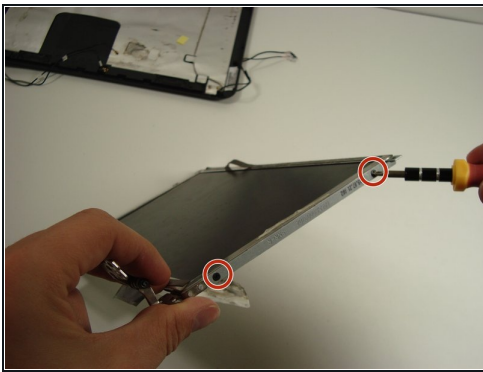
- Pry off the top plastic cover of the display assembly.
 - The spudger may go all the way through to the screen-side of the cover. This is not a problem and won't damage anything.
- ⓘ There is adhesive tape holding the cover on.

Step 16 — Screen



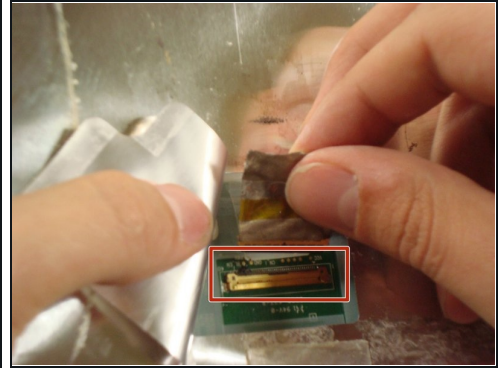
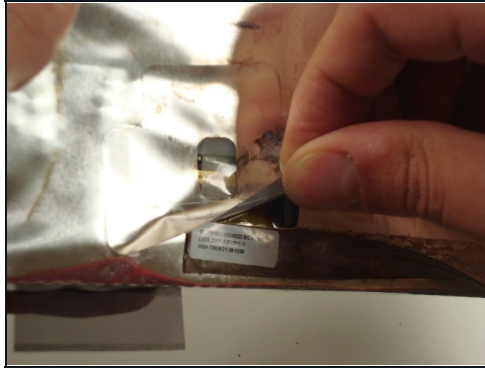
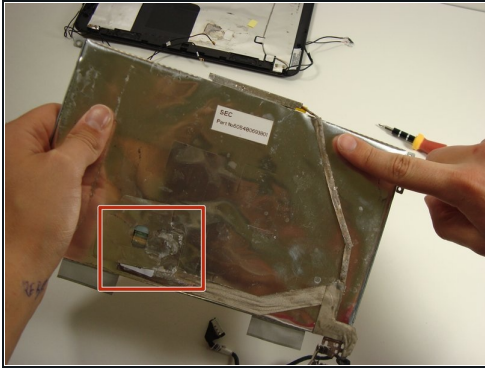
- Remove the 4 screws keeping the screen on the plastic assembly.

Step 17



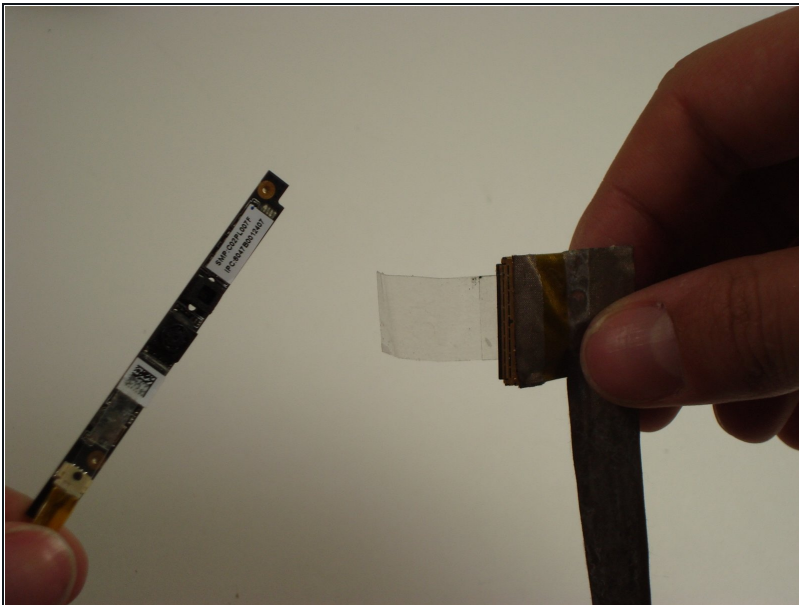
- Take the screen off the metal connectors by unscrewing each side. Each side has 2 screws.
- ① The last picture shows the metal connectors that attach it to the display assembly.

Step 18



- Detach the cable from the screen. It is connected under the foil flap.
- ❗ The large wire on the back of the screen is for both the webcam and the microphone, as well as the screen.

Step 19 — Webcam



- After removing the cable from the back of the screen, detach the webcam assembly.

To reassemble your device, follow these instructions in reverse order.