



Apple Thunderbolt Display LCD Replacement

The LCD is the center of the Thunderbolt Display, so what happens when it gets cracked and needs to be replaced? Installing a new LCD will bring your broken display back to life!

Written By: Calvin Lavery



INTRODUCTION

The LCD in the Apple Thunderbolt Display is the very first part that will have to be taken out no matter what piece inside this device has to be replaced. Because of this, it is essential to know how to carefully remove the LCD from the device. Something that should be noted is that even after screws are removed, don't hastily try pulling the LCD out of its casing because it is still connected to the power and logic board of the display! Once the new screen is in place, make sure that everything is connected like the original LCD was and your device should be as good as new!

TOOLS:

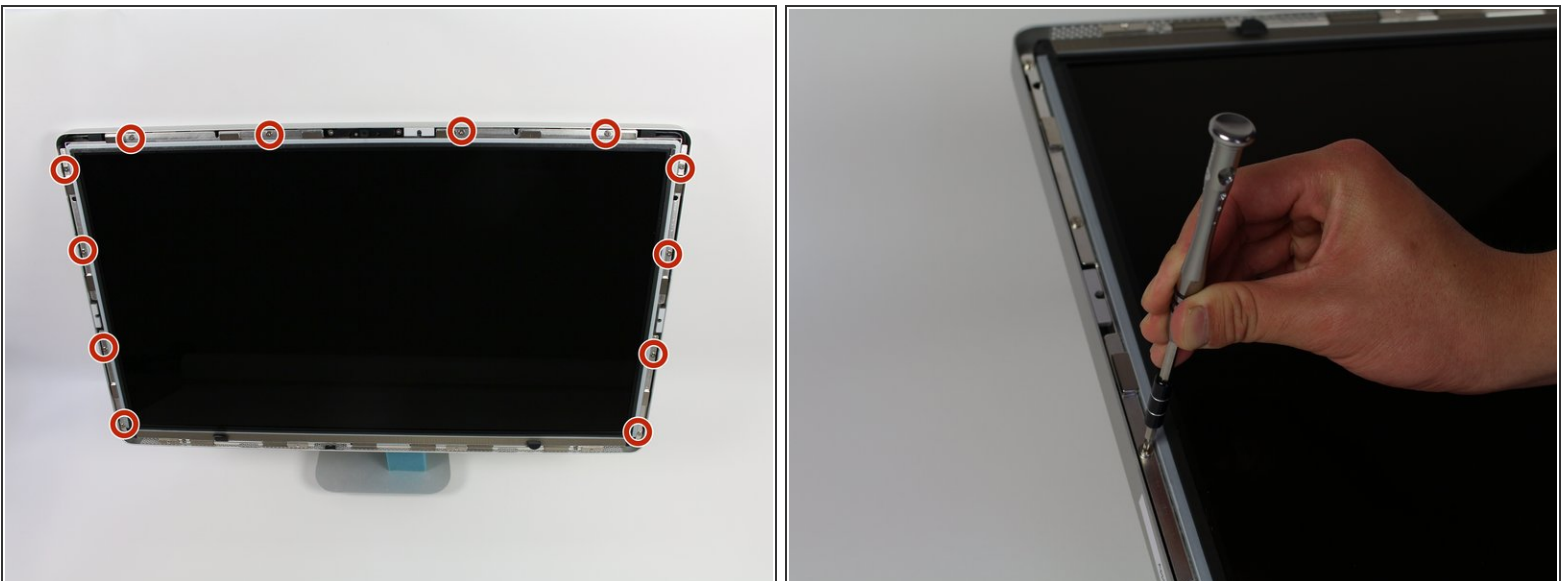
- [T10 Torx Security Bit Screwdriver](#) (1)
 - [Heavy-Duty Suction Cups \(Pair\)](#) (1)
 - [iMac Service Wedge](#) (1)
-

Step 1 — LCD



- Lay down the display with screen side up.
- i Since the display is able to be tilted up and down, we found it useful to prop up the screen up with a styrofoam block in between the screen and the base.
- Place the two suction cups on both sides of the top of the screen and make sure to lock them in place.
- The glass screen is connected to the rest of the display by small magnets. Lift slowly and the screen will come right off.

Step 2



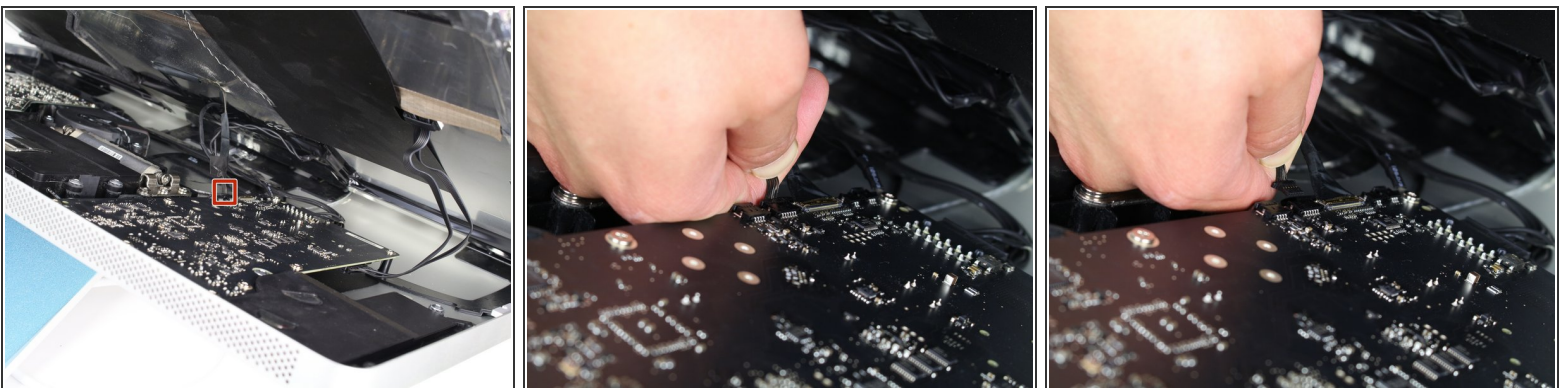
- Unscrew the 12 screws around the side edges and the top of the LCD with the TR 10 Screwdriver.

Step 3



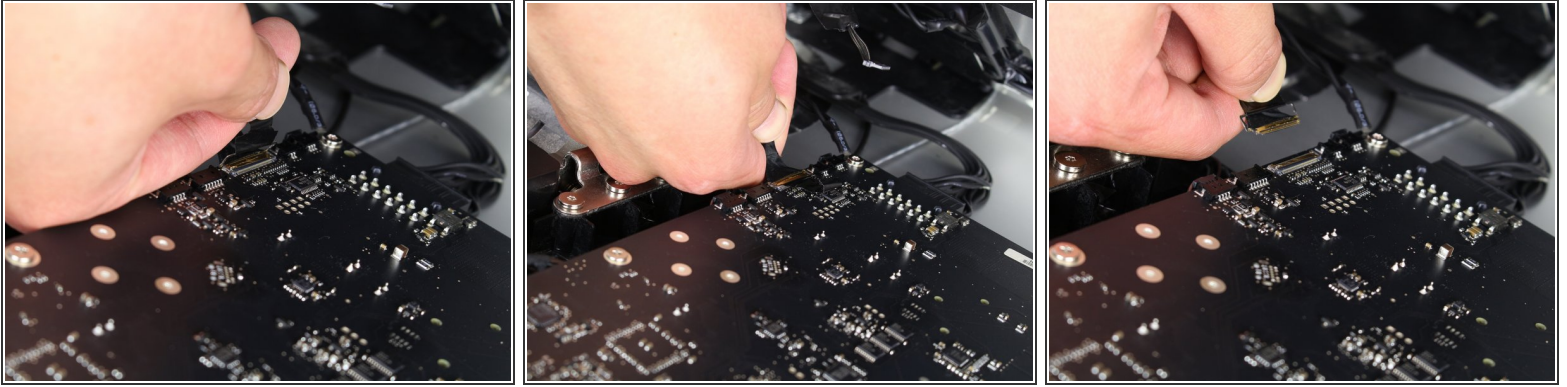
- Slowly lift the LCD out from its placement and tilt it upwards.
- ⓘ It can be very helpful to have an extra set of hands to hold the LCD up while you work with the cables underneath.
- ⚠ There are four wires that connect the LCD to the rest of the components. Make sure not to pull hard and break any of the wires.

Step 4



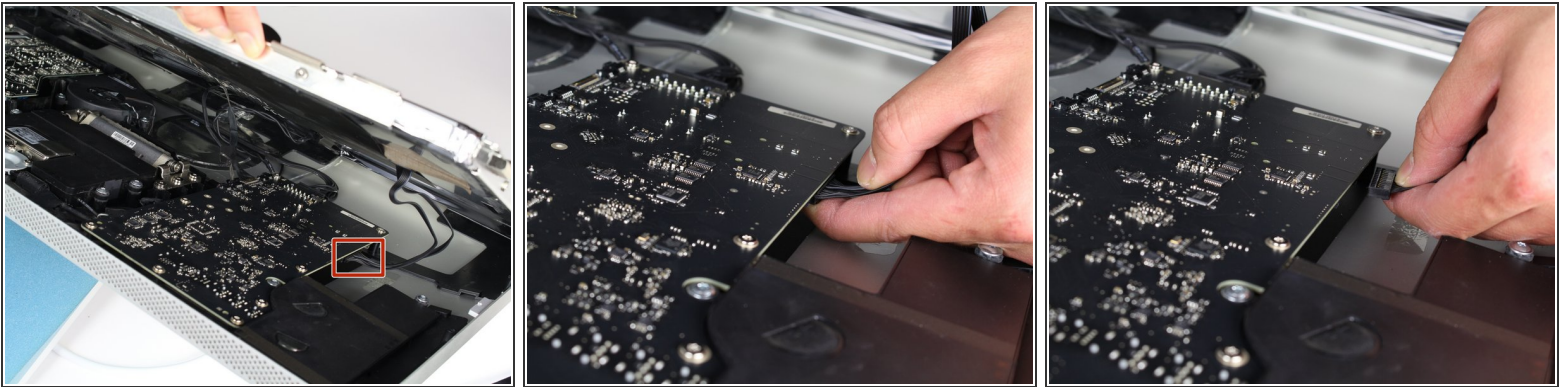
- For the first of the four wires (furthest away from the wire that is held in by a screw), grab onto the connector and pull slowly.

Step 5



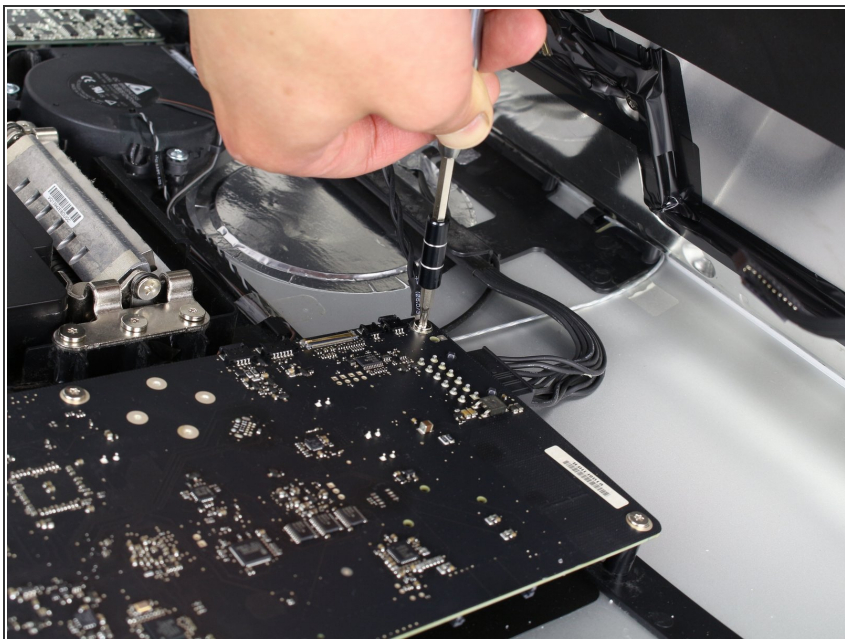
- For the next connector, which is right next to the previous wire, there is a piece of tape attached to a metal bar.
- Flip the metal bar over using the tape as a handle.
- Next, grab onto the connector and slowly pull it from the socket in the logic board.

Step 6



- For the connector on the other side of the logic board, grab the connector from underneath and carefully pull it from the board.

Step 7



- For the last wire connecting to the LCD, use your T 10 Screwdriver to remove the screw.

Step 8



- The LCD has now been fully disconnected from the casing and can be repaired/replaced!

i its best to set the LCD on a bed or on a thick towel to avoid damage to the LCD

To reassemble your device, follow these instructions in reverse order.