



JBL Charge Micro USB / Aux Port Replacement

Since the Micro USB / AUX Port connectors are...

Written By: Alexander Castanares



INTRODUCTION

Since the Micro USB / AUX Port connectors are super-glued into the white casing, it is nearly impossible to replace it without replacing the whole piece of casing. Follow this guide to isolate and replace the white casing containing the Micro USB / AUX Port.

TOOLS:

[Phillips #2 Screwdriver](#) (1)

[Razor Blade](#) (1)

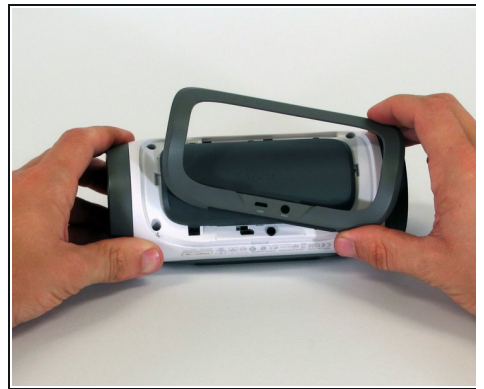
[Metal Spudger](#) (1)

[Phillips #1 Screwdriver](#) (1)

[Spudger](#) (1)

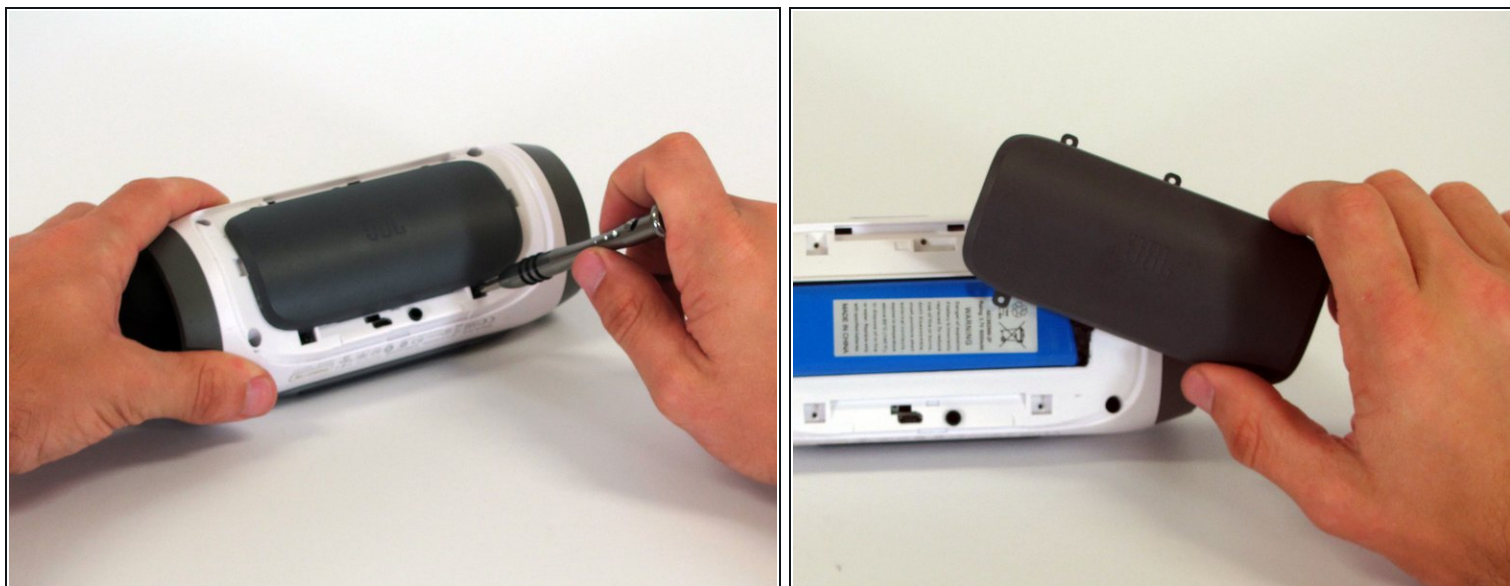
[iFixit Opening Tool](#) (1)

Step 1 — Disassembling JBL Charge Casing



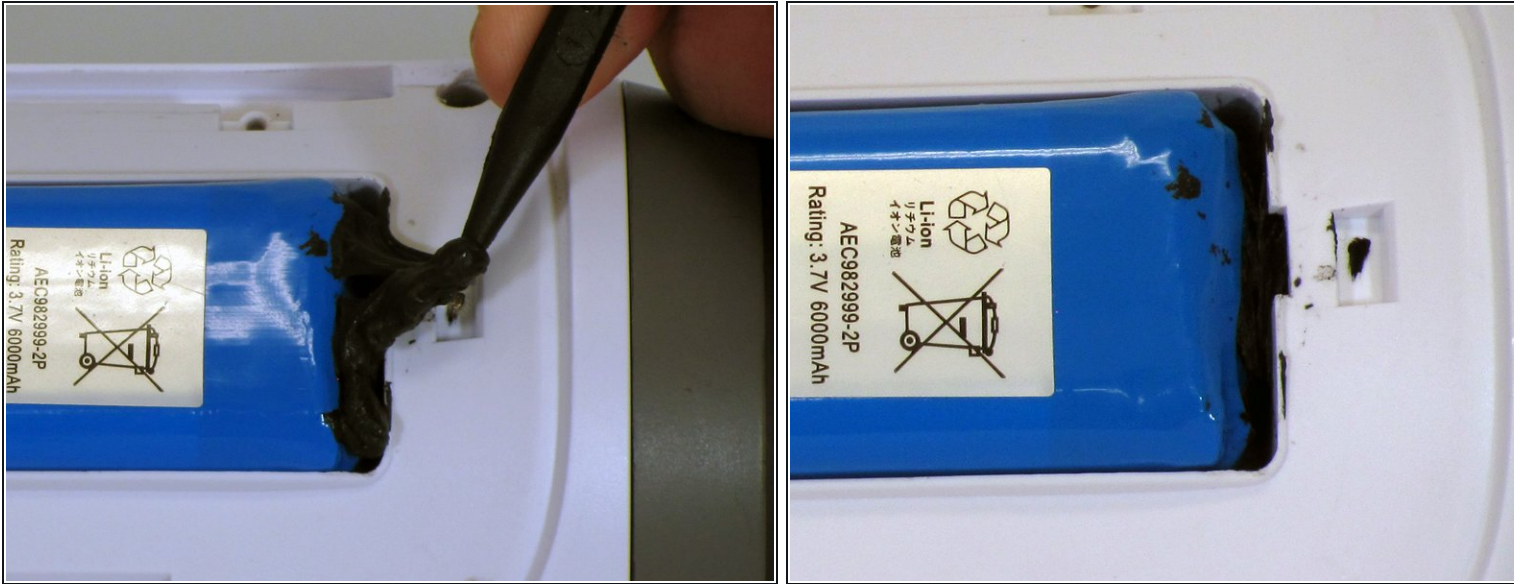
- Make sure the device is powered off before you begin to disassemble the speaker.
- Remove the trim from the speaker using a jimmy or metal spudger.

Step 2



- Use the PH1 screwdriver to remove all five of the 6 mm screws from the battery cover.
- Remove the battery cover and set the cover aside.

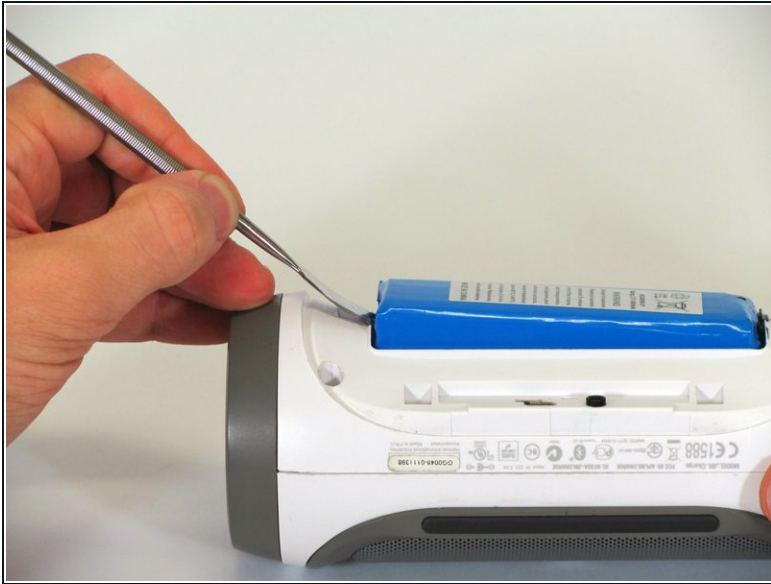
Step 3



- Use a spudger to carefully remove the liquid electrical tape that holds the battery inside the battery compartment.

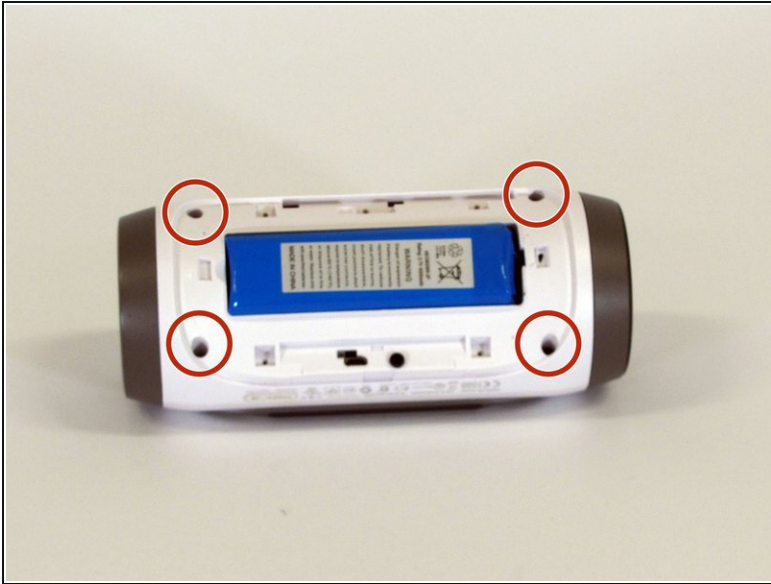
⚠ Be careful not to puncture the battery, or damage the battery wire underneath the liquid electrical tape.

Step 4



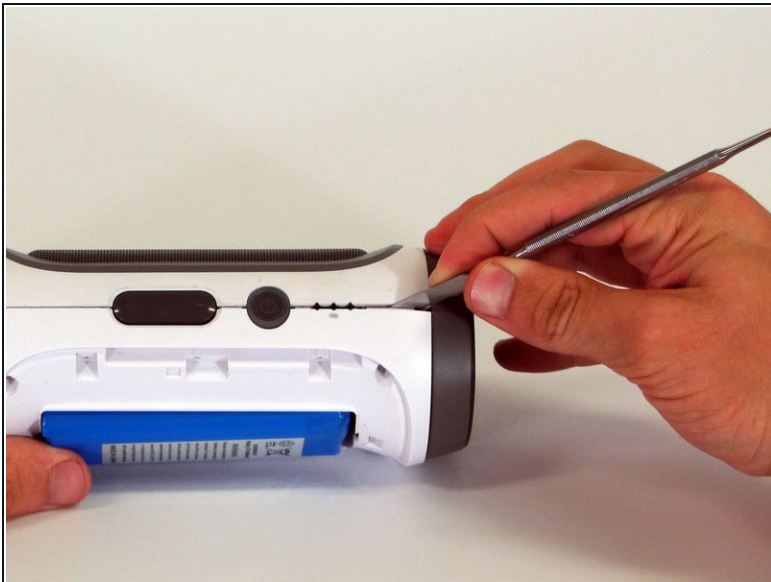
- Use a spudger to lift the battery out of the device.
 - Lift the end of the battery that does not have the wire connection and remove the 16 mm PH2 screw underneath the battery.
- ⚠ Notice the wire that is connecting the battery to the device. Attempting to remove the battery completely could cause damage to the wire. Do not use a metal spudger to remove the battery, this could cause damage.

Step 5



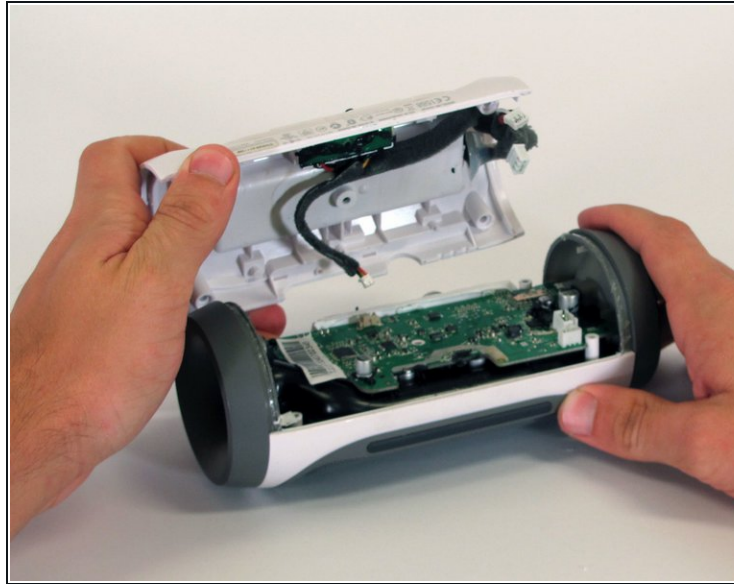
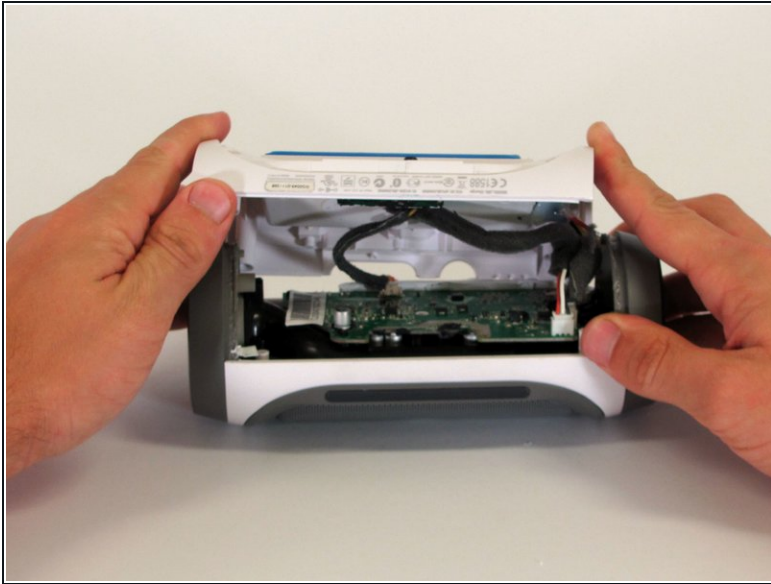
- Remove the four 16 mm screws from the white plastic casing using the PH2 screwdriver.

Step 6



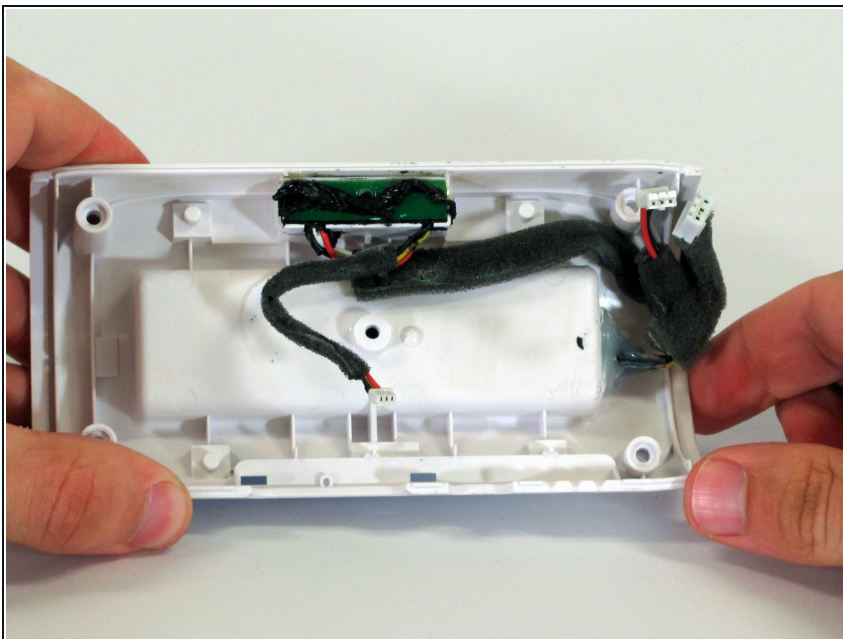
- Starting in a corner of the device where the casing and the side meet, use a pointed metal spudger to pry the back casing off the speaker and the glue holding the seam together.
- Slide the metal spudger along the seam to separate the back casing from the rest of the speaker.

Step 7



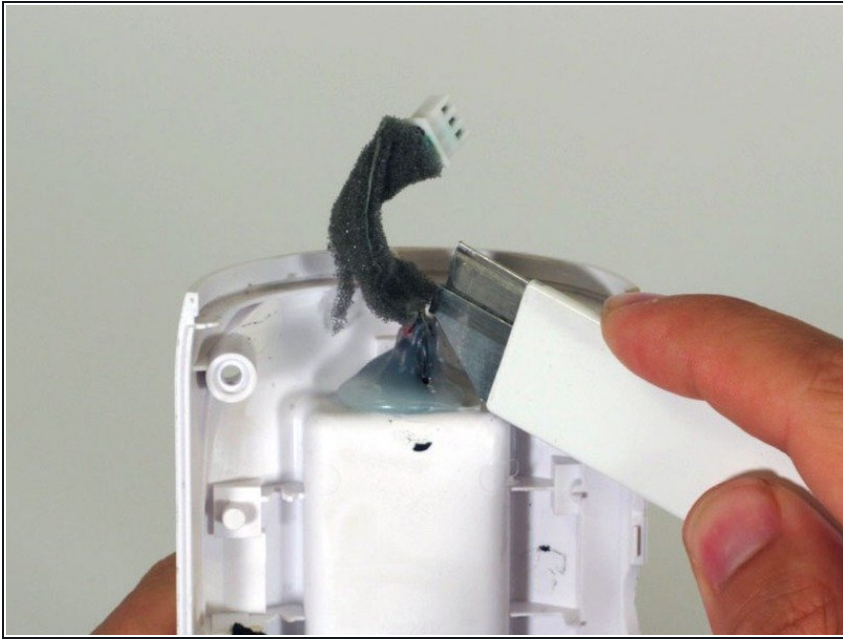
- Once the back casing is open, disconnect the three white connectors from the motherboard.
- Remove the upper casing.

Step 8 — Battery



- Turn your attention to the back casing removed in Step 7.

Step 9



- Using a razor blade, remove the glue holding the battery cable in place.
- Use multiple vertical cuts to remove pieces of the glue.

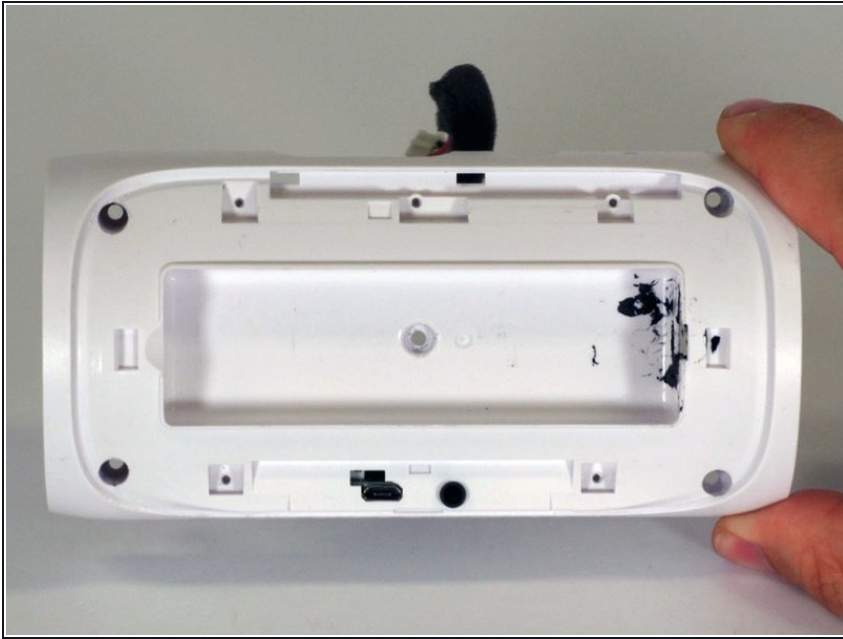
⚠ Be careful not to cut the battery cables.

Step 10



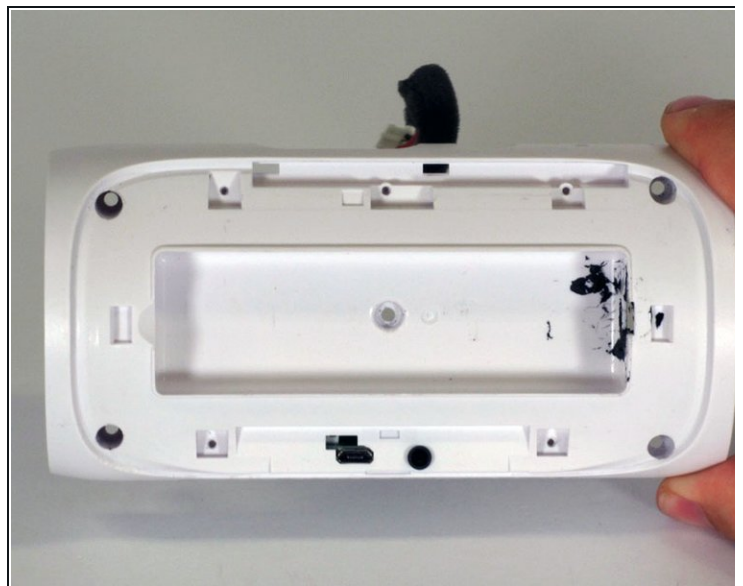
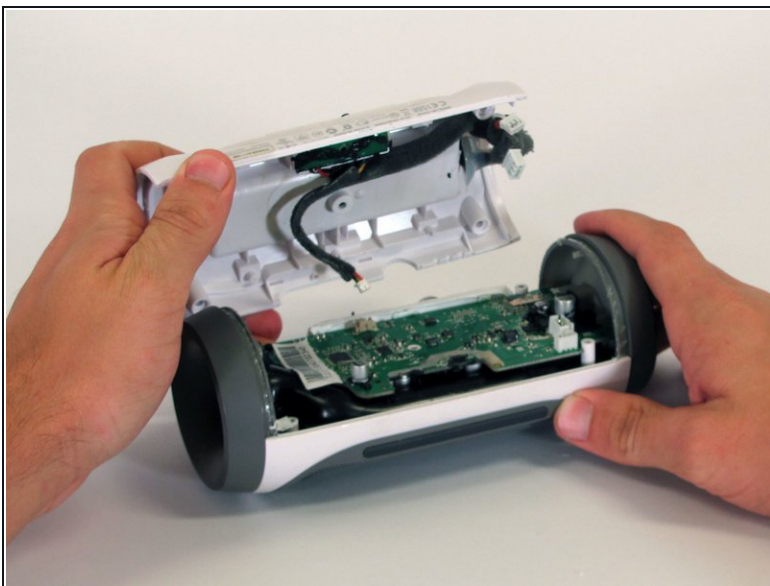
- Remove the foam surrounding the battery cable.

Step 11



- To remove the battery, pull the battery cable through the hole.
- ❗ This entire white piece needs to be replaced (if replacing the aux/usb port).

Step 12 — Micro USB / Aux Port



- Place the battery into the new white casing.
- Reassemble the device by following the steps in reverse order.

To reassemble your device, follow these instructions in reverse order.

