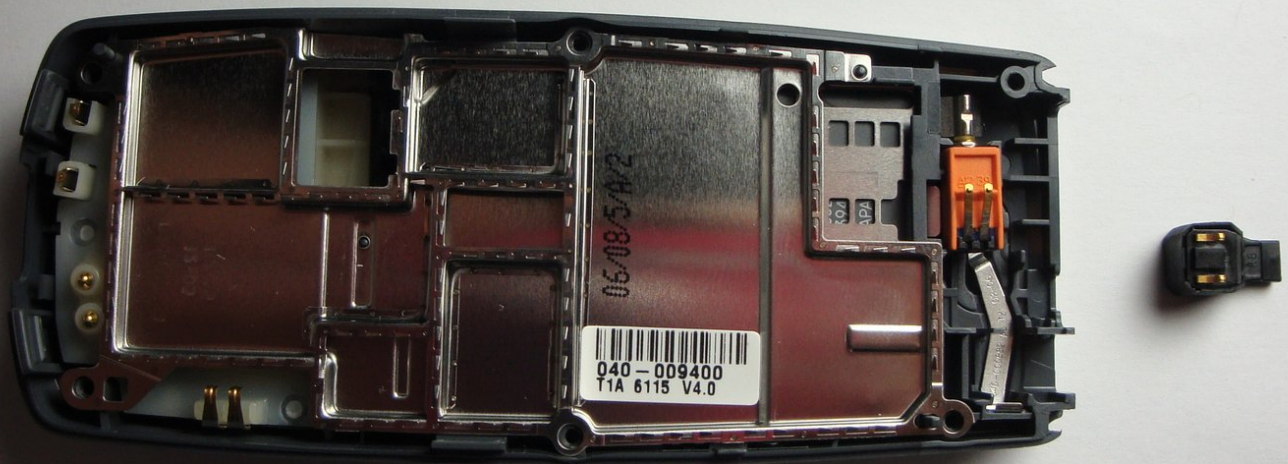




# Nokia 2128i Internal Clock Battery Replacement

This guide will show how to access and remove the internal clock battery for your phone.

Written By: Curtis Lutje



# INTRODUCTION

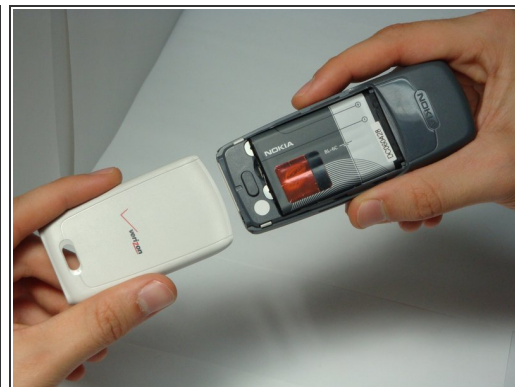
The time on your phone is always wrong, making you arrive at the wrong time. Switch out the internal clock battery and always be on time.

---

## TOOLS:

- [iFixit Opening Tools](#) (1)
  - [T6 Torx Screwdriver](#) (1)
-

## Step 1 — Battery



- Be sure cell phone is off before you begin to disassemble the phone.
- Press the button on the bottom of the back of the cell phone.
- Slide rear panel down and remove it.

## Step 2



- Using your fingernail, pry the back of the battery upwards and pull out.



### Step 3 — Faceplate



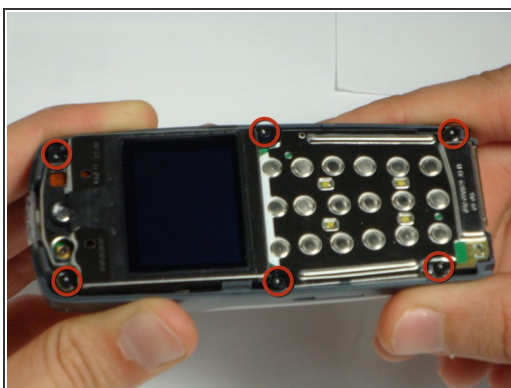
- Insert the plastic opening tool under the faceplate.
- Separate the faceplate from main body by twisting the prying tool with some force.
- The faceplate is held by three plastic fasteners, so pry evenly on both sides of phone.

### Step 4 — Keypad



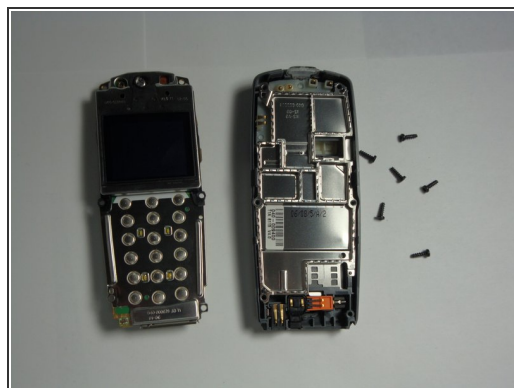
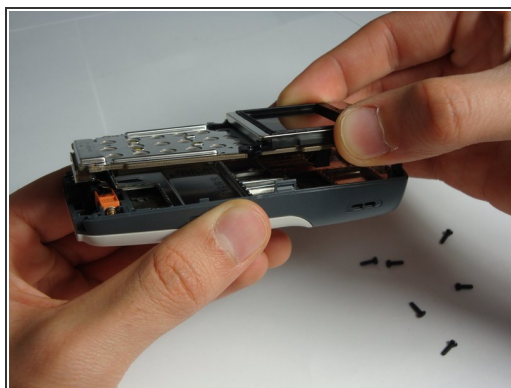
- With the faceplate removed, simply peel off rubber key pad and remove.

## Step 5 — Motherboard Assembly



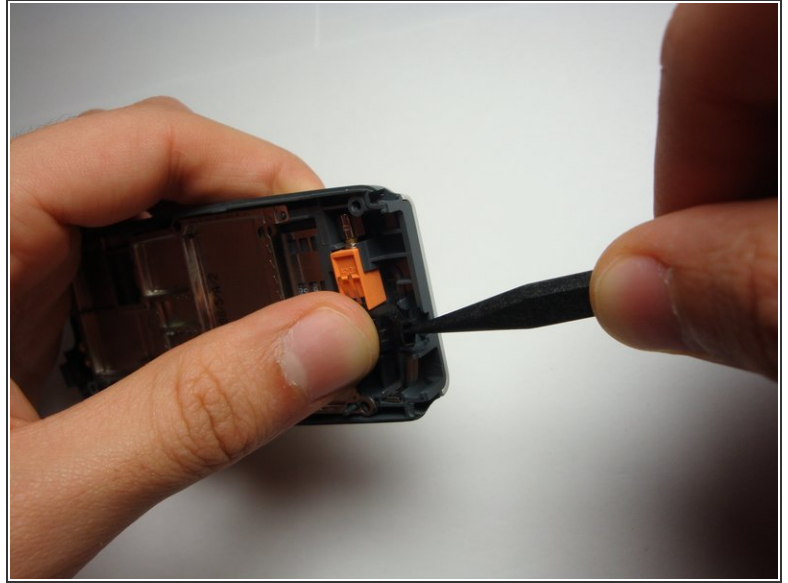
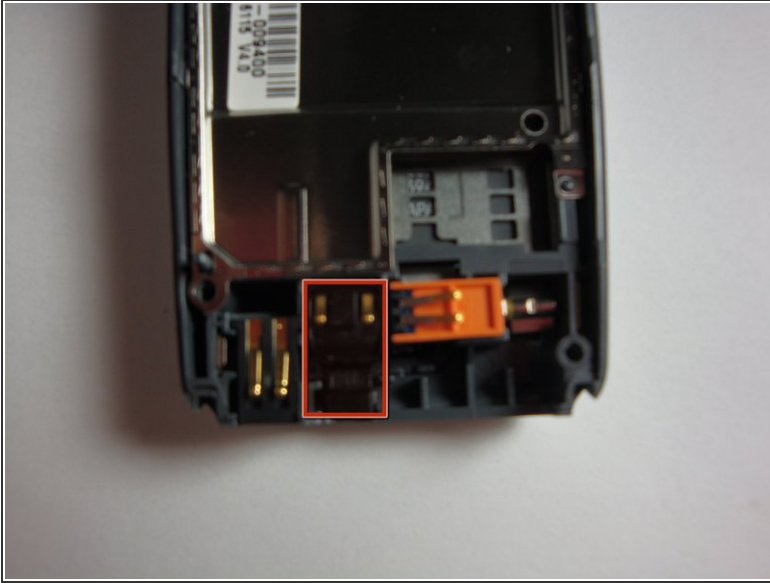
- Locate and remove the six screws on the front of the phone using a T6 Torx.
- All 6 screws are 6.9mm long.

## Step 6



- After removing screws, lift the motherboard assembly straight off the cell phone body.

## Step 7 — Internal Clock Battery



- With the logic board completely removed, gently pry out the internal clock battery from its housing.

To reassemble your device, follow these instructions in reverse order.