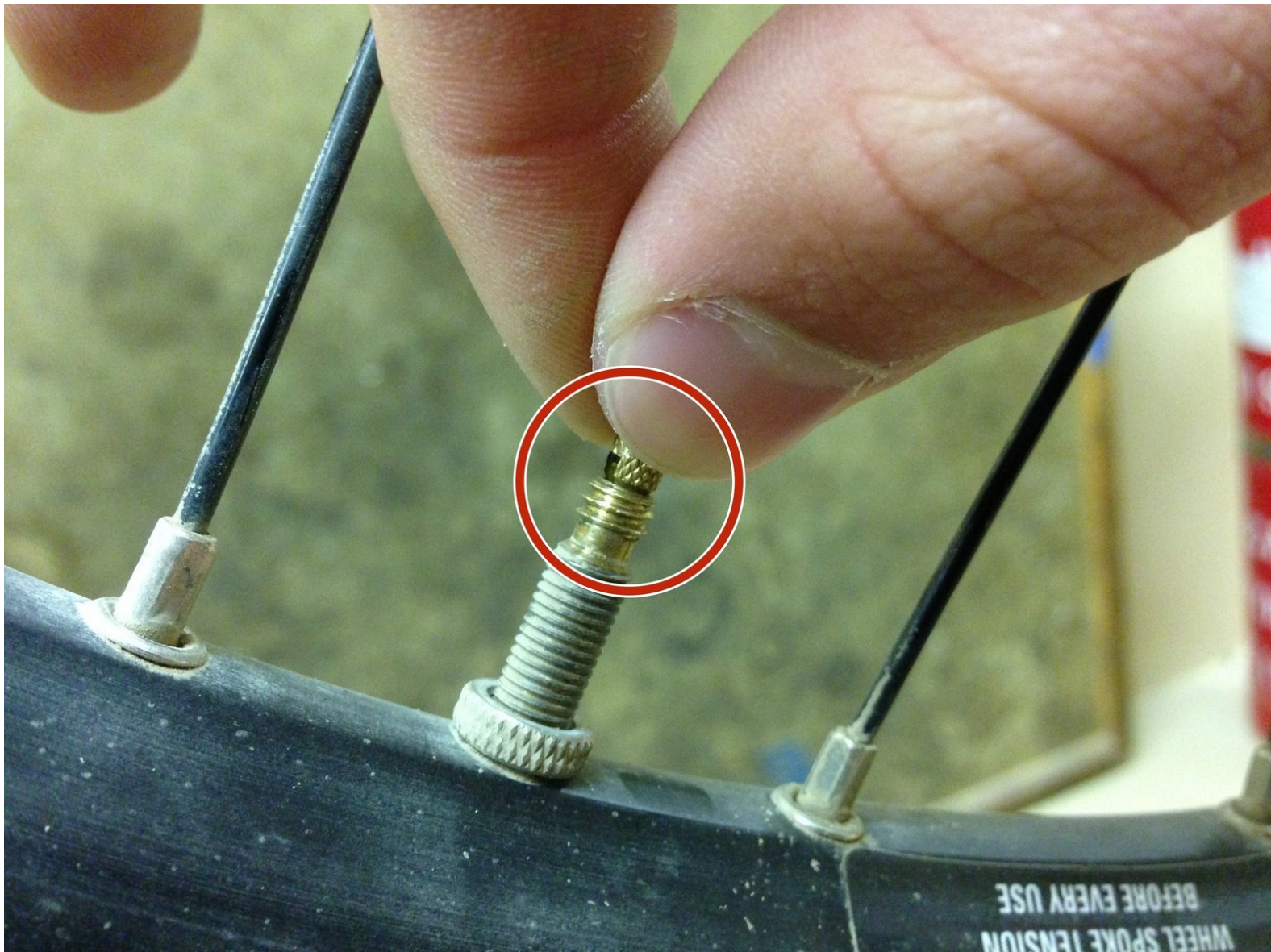




# 2006 Iron Horse Warrior Tire/Tube Replacement

This guide will demonstrate how to properly remove the 2006 Iron Horse Warrior bike's tires.

Written By: Jose Pedro Kitajima Borges



---

## INTRODUCTION

The 2006 Iron Horse Warrior bike has two 26 x 2.10" WTB Weirwolf DNA tires. The tires are placed on a Aluminum rim with 32-hole rims and a WTB Speed Disc.



### TOOLS:

- [Tire Levers](#) (2)

*You may use as many levers as you feel necessary.*

---



## Step 1 — Rear Wheel



- ❗ Turn the bike upside down if you don't have a bike stand. This will make it easier to remove the tire.
- Unfasten the left side of the wheel by pulling the black "L" shaped lever up with your hands.

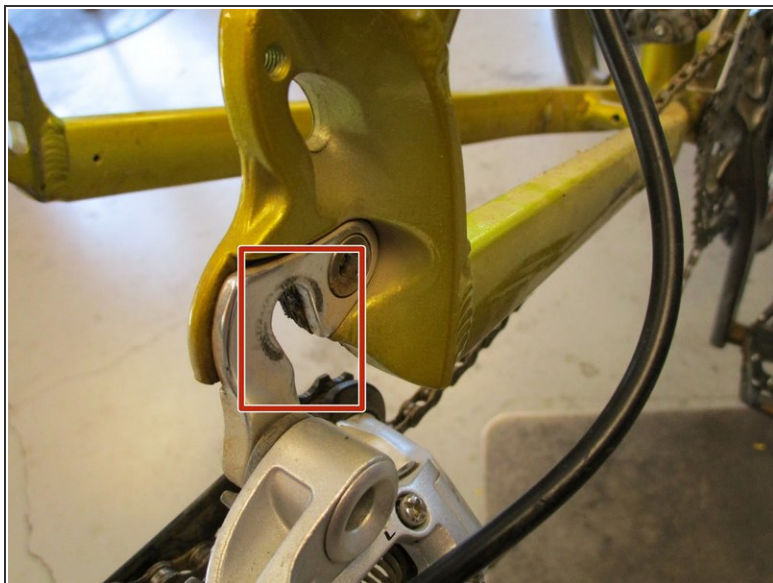
## Step 2



- On the right side, use your hands to unscrew the cap of the axle counterclockwise until it is loose.

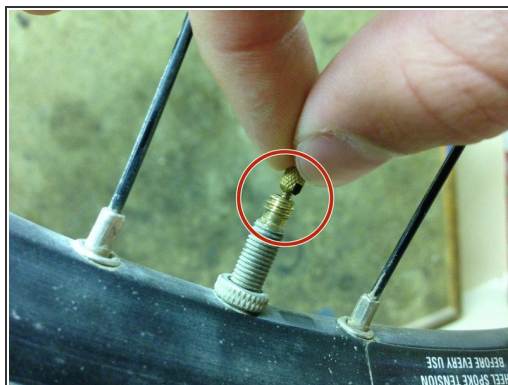
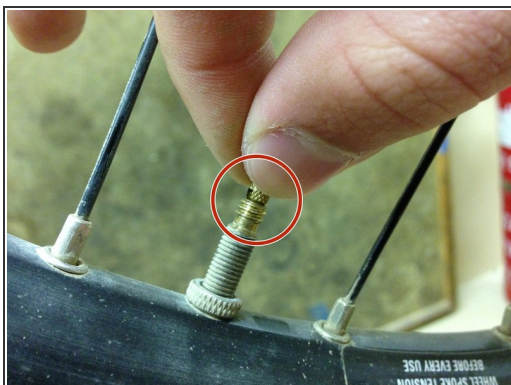


### Step 3



- Push down on the the tire with your hands to remove it from the frame of the bike.
- ❗ Sometimes the axle will get caught in the boxed area. Use both of your hands to cautiously push it down harder until the tire comes loose. This may require a fair amount of force.

### Step 4 — Tire/Tube



- Slightly loosen the valve bolt counterclockwise with your thumb and index finger.
- Deflate the tire by pressing down the air valve tip with your finger. Use as much pressure as needed to hear the air flowing out of the tube.

## Step 5



- Use your thumb and index finger to unscrew the valve nut by rotating it counterclockwise.

## Step 6



- Hold the tire lever firmly in your hands and look for the boundary between the tire and the wheel rim. Apply great force to the lever until you pry the rim and the tire apart.
- ⓘ You can do this step anywhere along the circumference of the wheel.
- With the tip of the lever inserted between the rim and the tire, rotate the lever 90° counterclockwise and fix the lever to the metal spokes using the arrow shaped slot located on the top of the lever.



## Step 7



- Insert an extra tire lever between the tire and the rim.
  - Move the lever along the circumference of the rim to pry the tire apart.
- i** You may attach as many tire levers on the spokes as you feel necessary to make this step easier.

## Step 8



- Start removing the tire by unplugging the valve from the rim slot.
- Remove the rest of the tire and the tube from the rim.

Once you have completed this guide, assemble the wheel back on the bike.

This document was generated on 2020-11-28 04:30:24 AM (MST).

