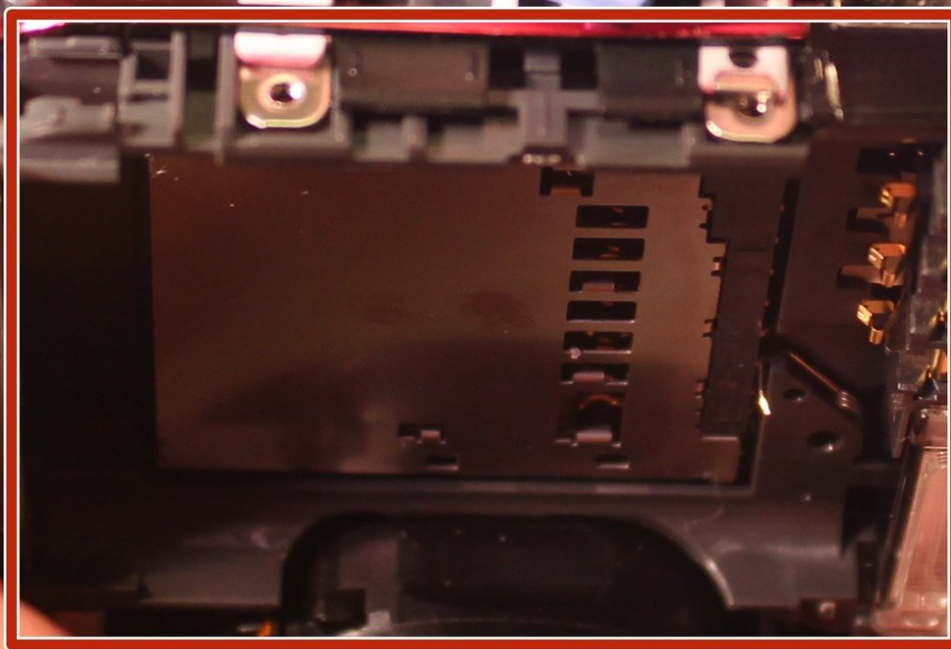




Sony Cyber-shot DSC-WX80 Battery Replacement

This guide will show the step by step process to replacing your Sony Cyber Shot WX80 battery.

Written By: Matthew Schmid



INTRODUCTION

Make sure you have the necessary tools in order to complete the battery replacement for the Sony Cyber Shot WX80 and be sure to have a steady hand when dealing with the smaller and more fragile parts.



TOOLS:

- [Phillips #00 Screwdriver](#) (1)
- [Spudger](#) (1)
- [iFixit Opening Tools](#) (1)
- [Magnetic Project Mat](#) (1)
- [Tweezers](#) (1)



PARTS:

- [New Sony Cyber Shot DSC-WX80 Battery](#) (1)

Step 1 — Battery



- Begin by removing all six #00 screws holding the outer chassis together with the Phillips #00 Precision Screwdriver.

☑ Remember to keep track of all screws as they are small and very easy to lose

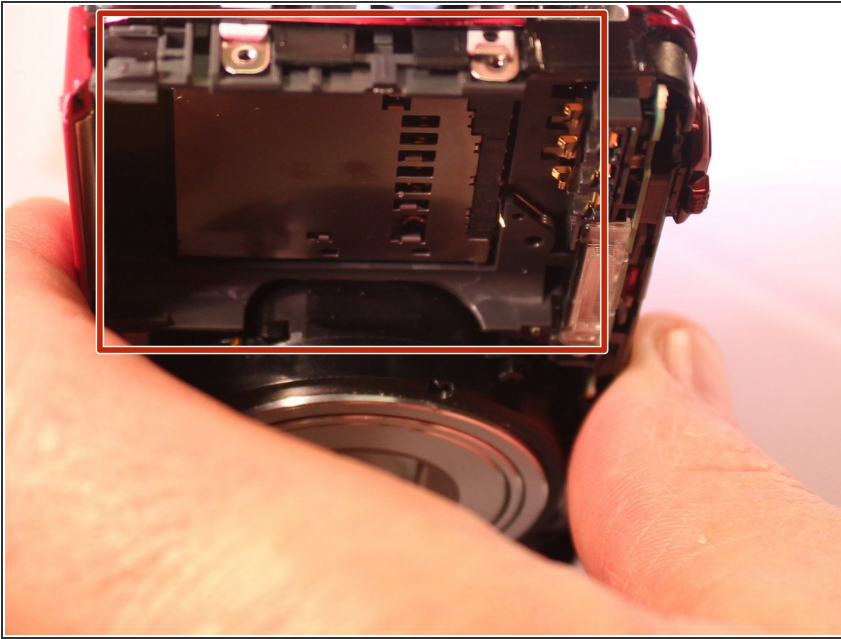
Step 2



ⓘ Take note of the small free moving flap near the battery port seen in the first of the three photos. Be sure to store the free moving flap in a safe place.

- Pry the front cover off gently. Use a plastic opening tool if available.
- Now pry the back cover off gently, using a plastic opening tool if available.

Step 3



- Access where the replacement battery will go indicated by the red square in the photo to your left
- Now insert your new replacement battery

To reassemble your device, follow these instructions in reverse order.