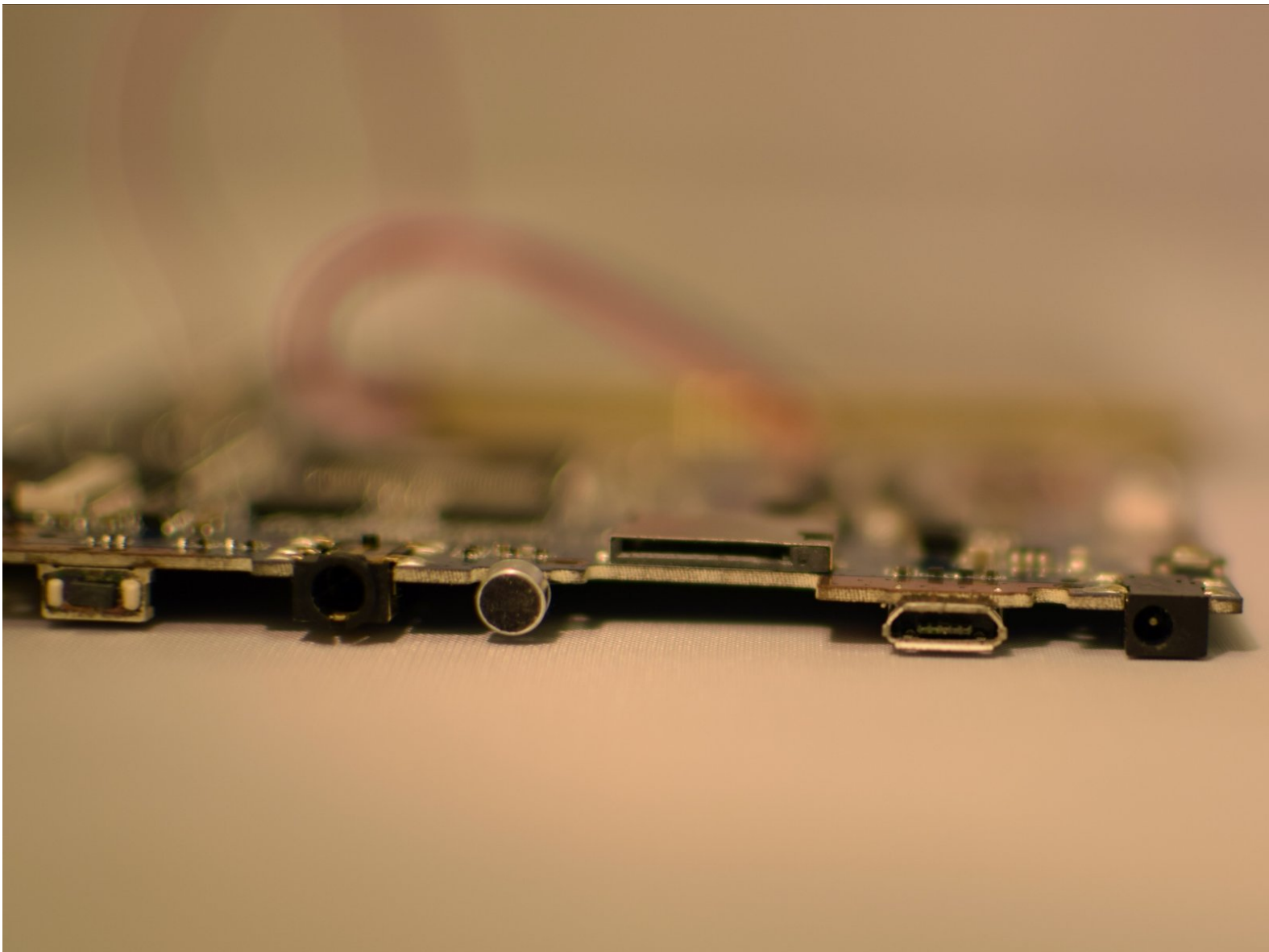




4Sight 9 Charging Port Replacement

If you are having trouble with charging your 4Sight tablet then replacing a faulty charging port may help.

Written By: Robert Shredow





TOOLS:

- [TR8 Torx Security Screwdriver](#) (1)
- [Tweezers](#) (1)
- [Soldering Workstation](#) (1)
- [Phillips #00 Screwdriver](#) (1)
- [iFixit Opening Tool](#) (1)

Step 1 — Cover



- Place the tablet on its side so that the two screws are facing upward.
- Remove two 1 mm screws from the left side of the tablet using a Phillips #00 screwdriver.

Step 2



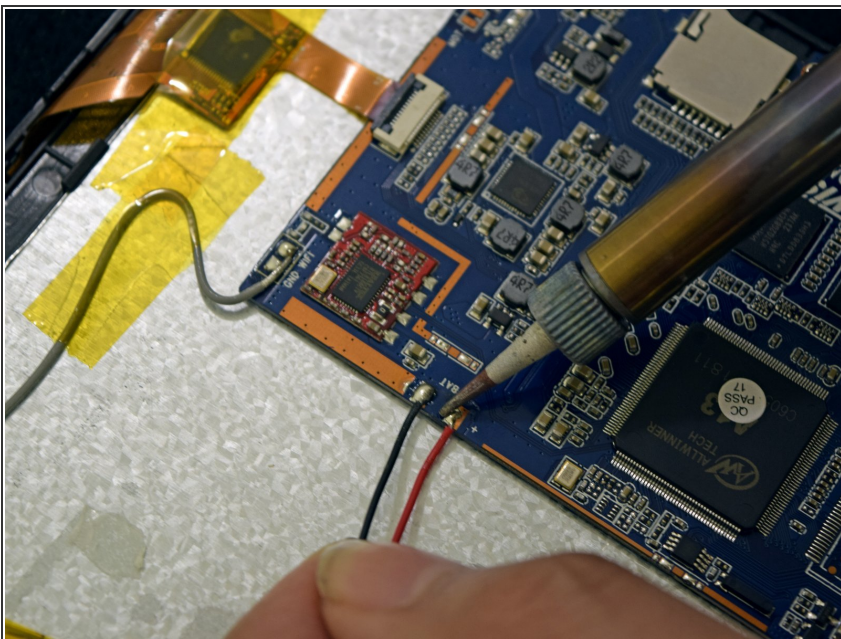
- Pry the case away from the device slowly by sliding a plastic opening tool along the device.
- Once loosened, use your hands to separate the case from the device.

Step 3



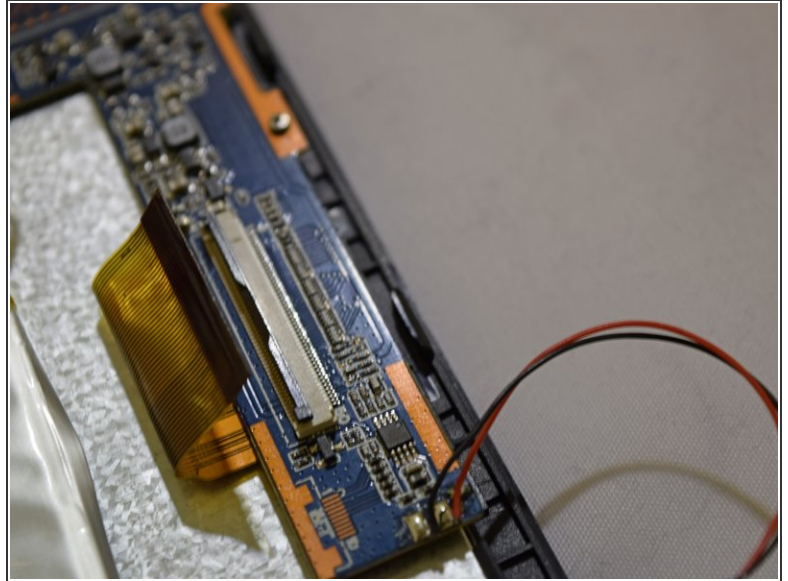
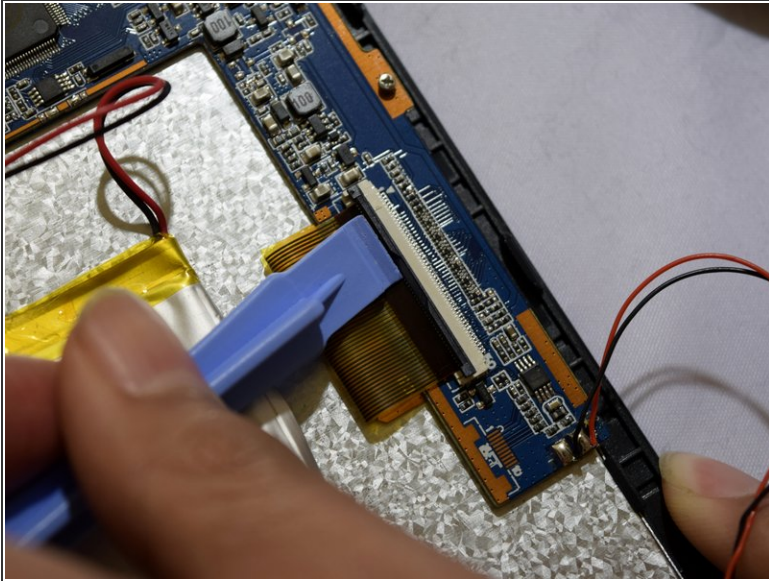
- Hold the positive and negative wires as close as possible to the speaker.
- Use an opening tool and fingers to simultaneously lift the speaker from the cover.

Step 4 — Motherboard



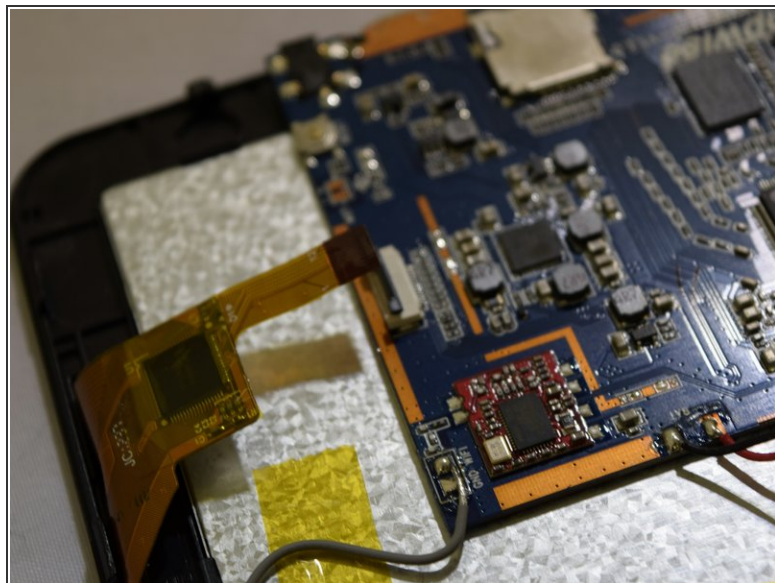
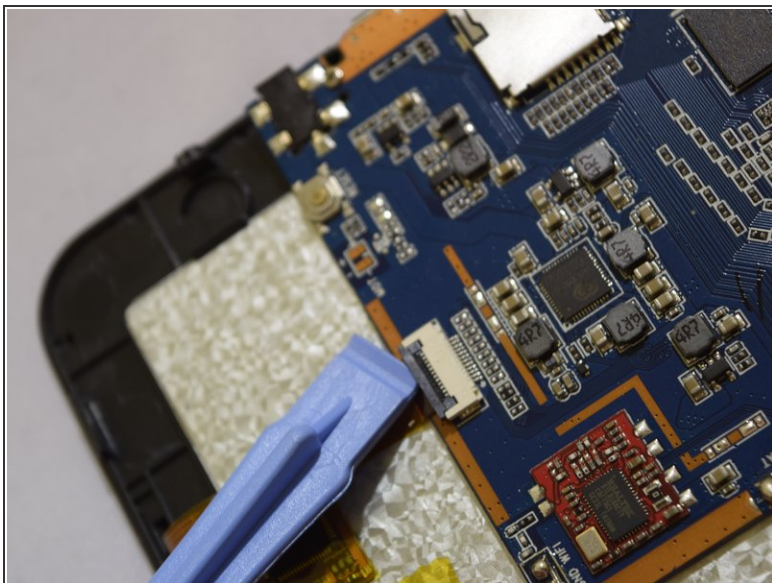
- Use soldering gun to remove the positive and negative wires connecting the battery to the circuit board.
- ❗ For a complete guide on how to solder, [click here](#).

Step 5




- Grip the ribbon located at the far end of the circuit board with a plastic spudger tool.
- Put pressure on the connector until the clasp comes undone.
- Gently pull up on electrical ribbon until it disconnects from circuit board.

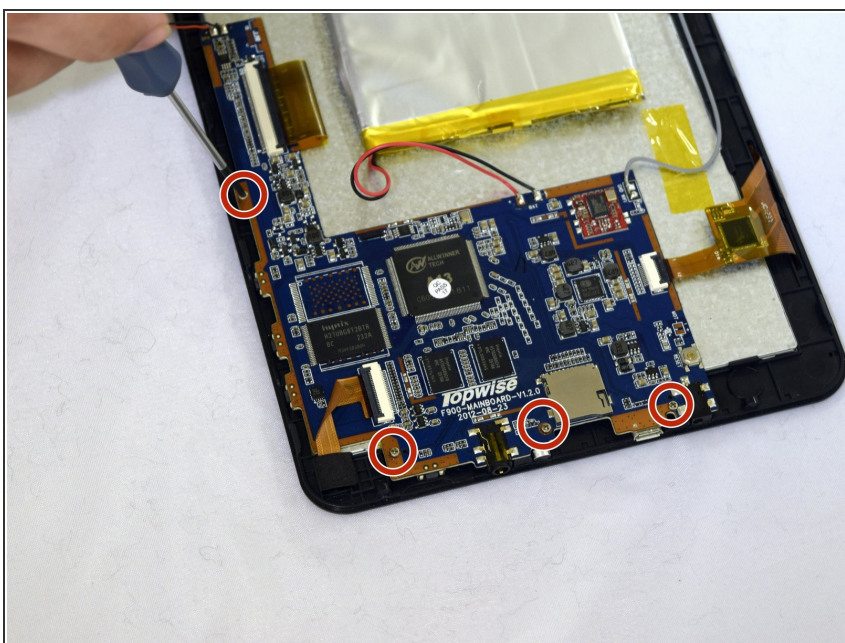
Step 6



- Remove the second electrical ribbon from the motherboard.

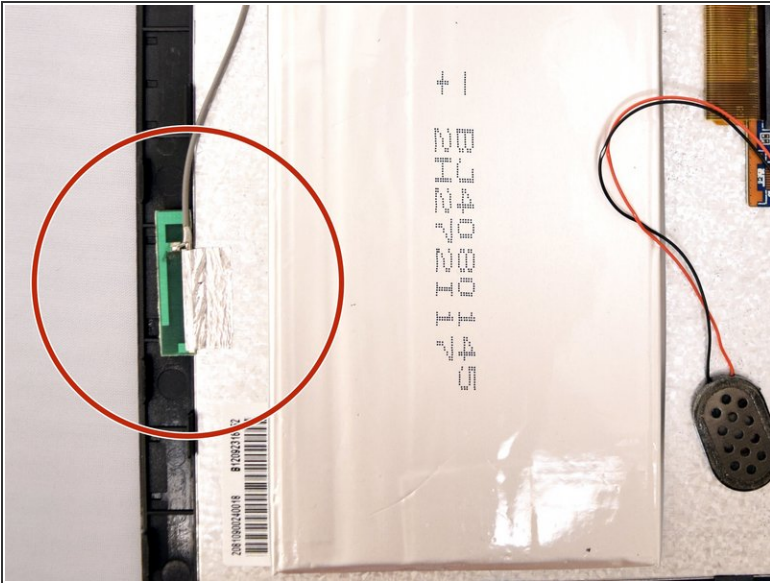
 Use the technique for the previous ribbon.

Step 7



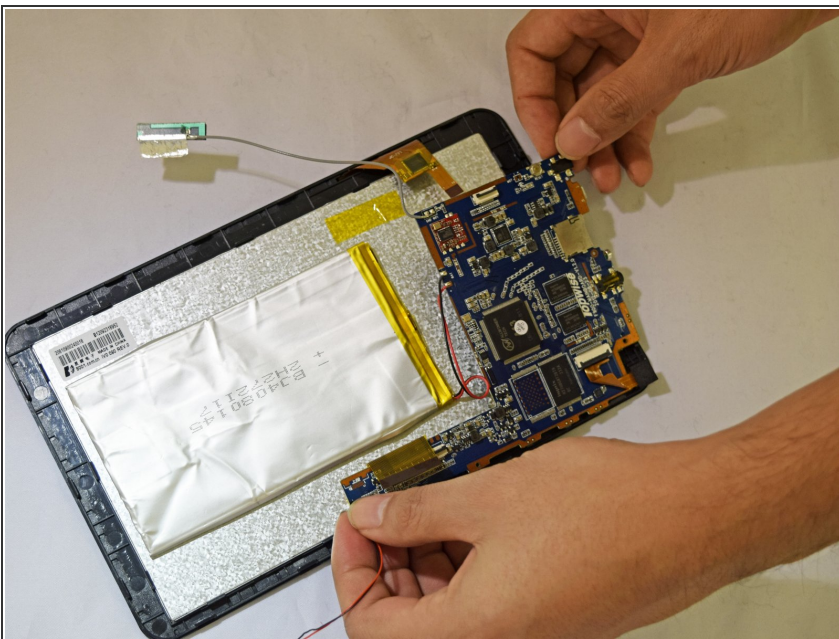
- Using #00 Phillips Screwdriver, remove the four 1mm screws holding the circuit board to the device.

Step 8



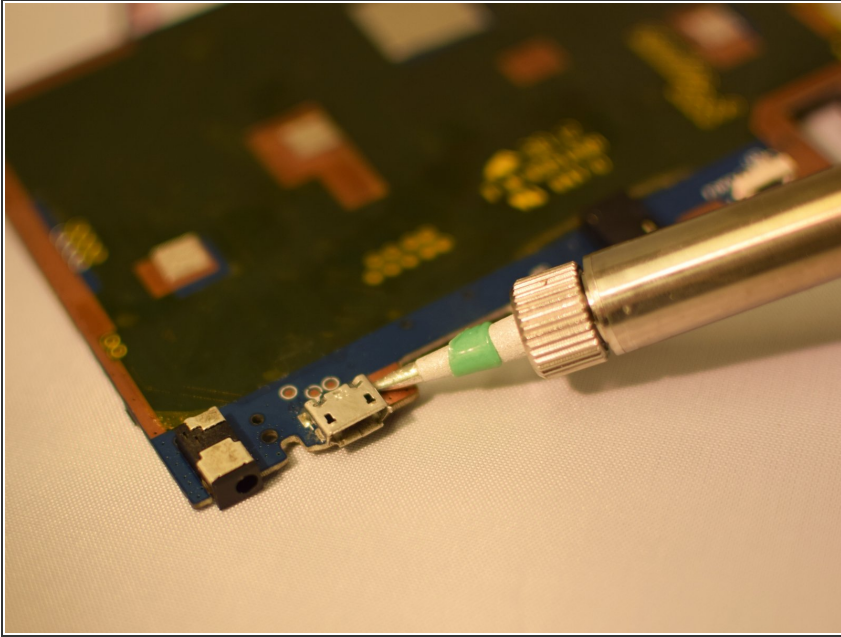
- With fingers, grip the green Wi-Fi connector.
- Gently pull up on connector to remove tape holding the connector in place.

Step 9



- Using your fingers, gently lift the motherboard.

Step 10 — Charging Port



- Use soldering gun and when solder is malleable, lift up on the left side of the charge port until it is not connected to the board with tweezers.

⚠ Charging port may be very hot due to soldering iron.

- Repeat this step on right side of charging port.

i For a complete guide on how to solder, [click here](#).

To reassemble your device, follow these instructions in reverse order.