



Sony Handycam CX250E SD Card Slot Replacement

This guide will provide the right steps in...

Written By: Alejandro Barajas



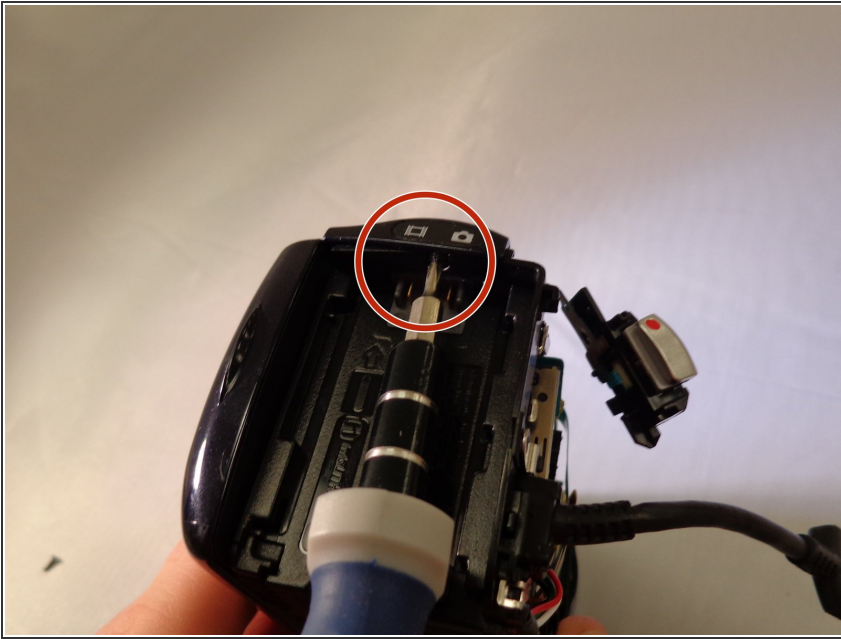
INTRODUCTION

This guide will provide the right steps in replacing the SD Card Slot for the CX260V.

TOOLS:

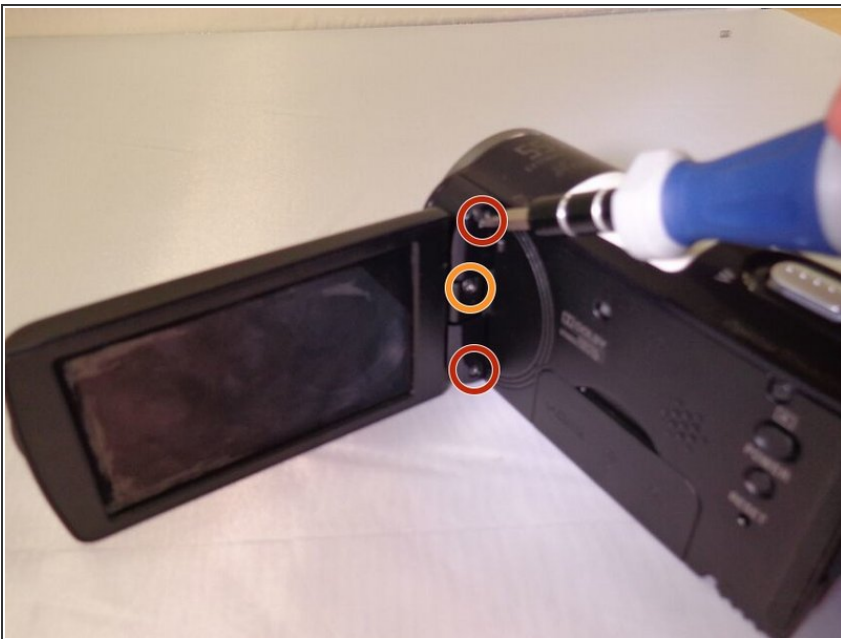
- [Tweezers](#) (1)
 - [Spudger](#) (1)
 - [Phillips #00 Screwdriver](#) (1)
-

Step 1 — Sony Handycam CX260V Housing Disassembly



- Use a Phillips #00 screwdriver to remove the one 3mm and two 5mm screws located in the battery assembly area.

Step 2



- Remove the two 5mm screws located on the top left and bottom of the camera.
- Remove the 3mm screw located in the middle of the joint attaching the LCD screen to the device.

Step 3



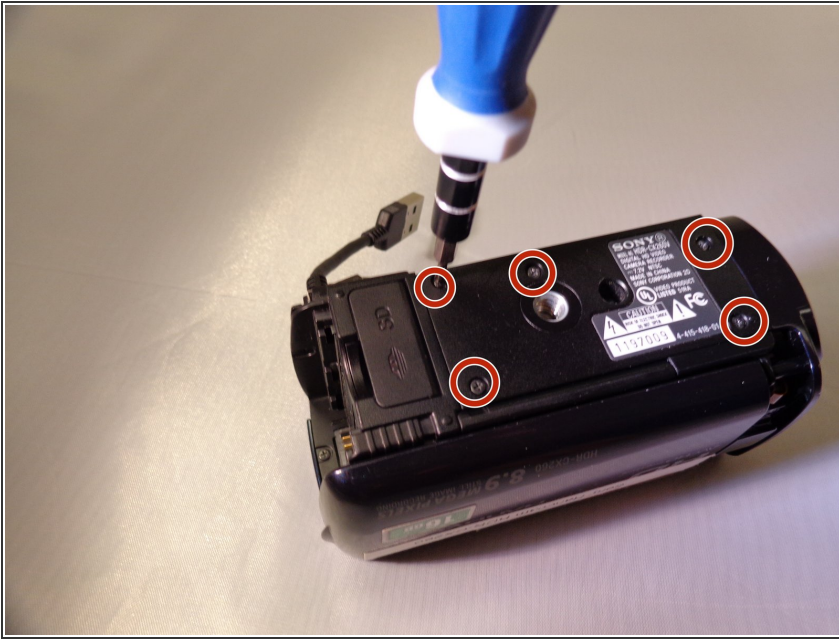
- Remove the two 5mm screws from the panel to the right of the LCD screen.

Step 4



- Use the plastic opening tool to remove the cover for the recording buttons.

Step 5



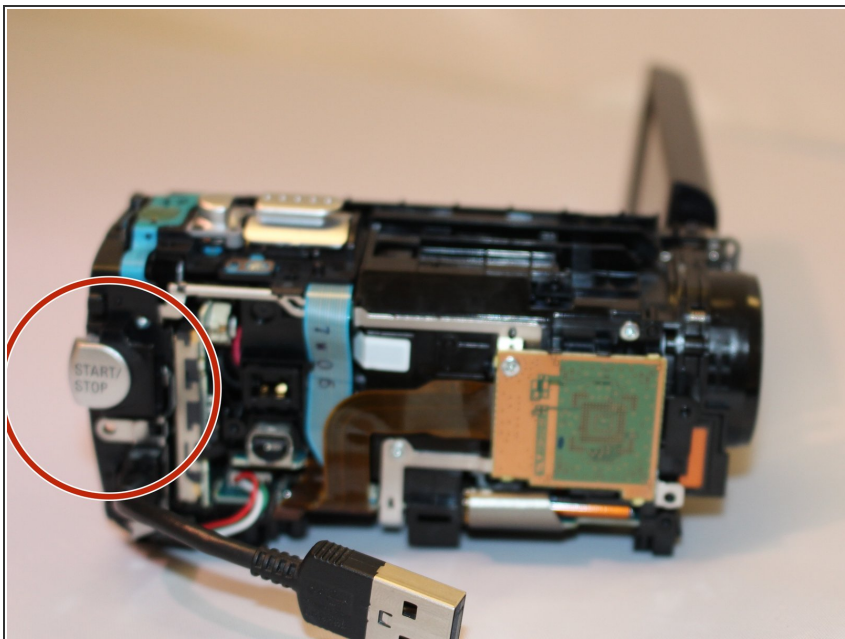
- Remove the five 5mm screws located on the bottom panel.
- Remove the bottom panel covering the internal motherboard.

Step 6



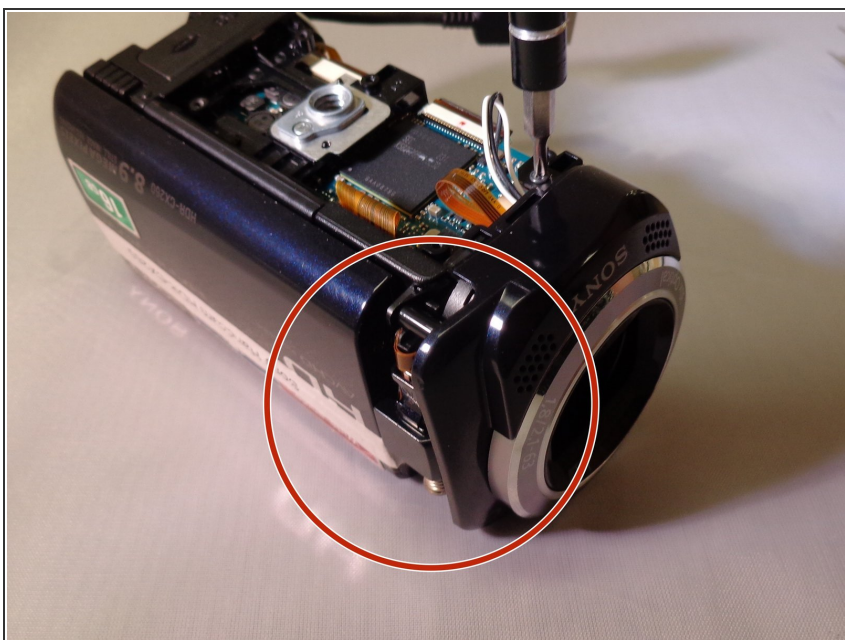
- Remove the 5mm screw located by the lens and two 5mm screws located under the handle.
- Remove the leather strap from the device.

Step 7



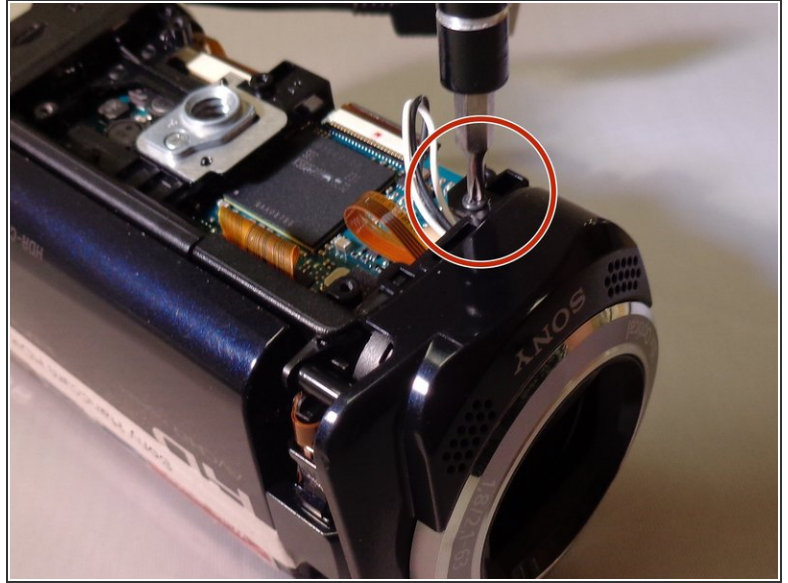
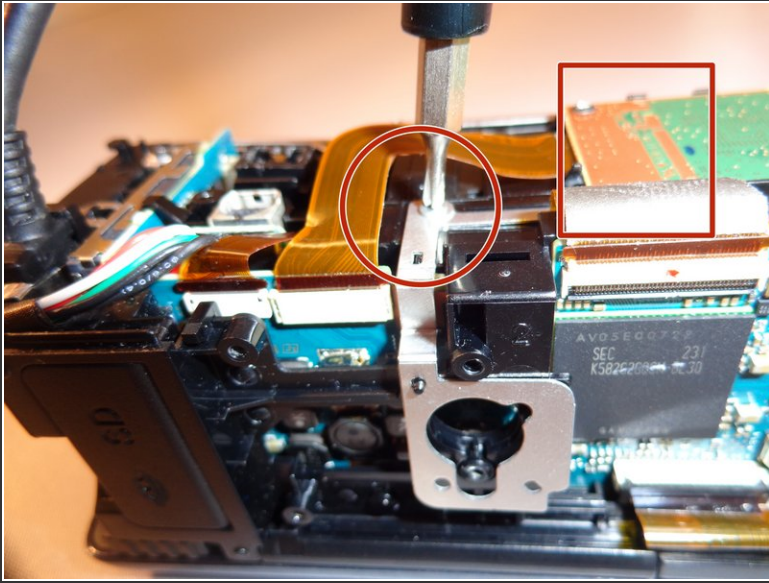
- Remove the 5mm screw to the left of the Record button.
- Remove the entire right-side panel where the leather strap was located.

Step 8



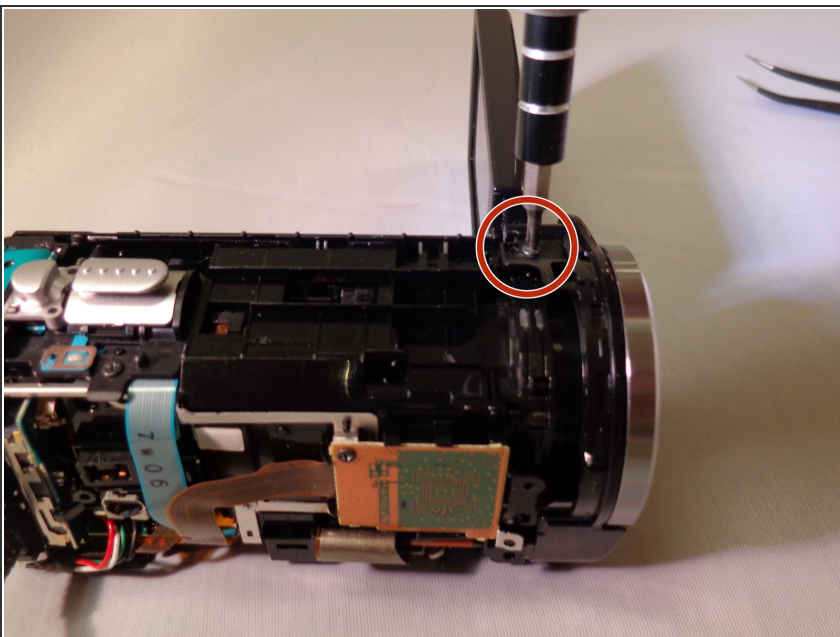
- Use a spudger to remove the LCD joint cover.

Step 9



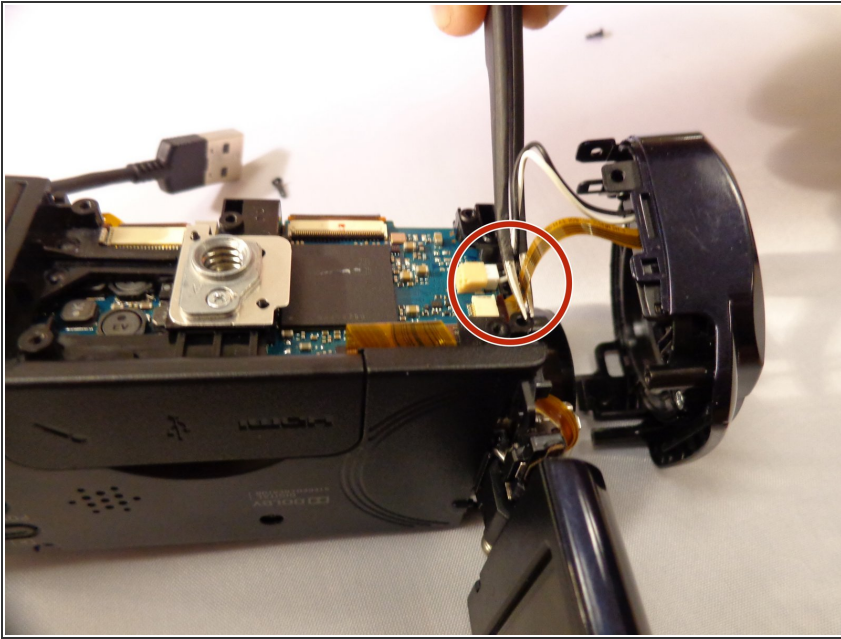
- Remove the three black 5mm screws and one silver 4mm screw located on the front right-side of the camera, near the orange motherboard.
- ❗ The silver screw is located on the front right-side of the camera and is attached to the main panel.

Step 10



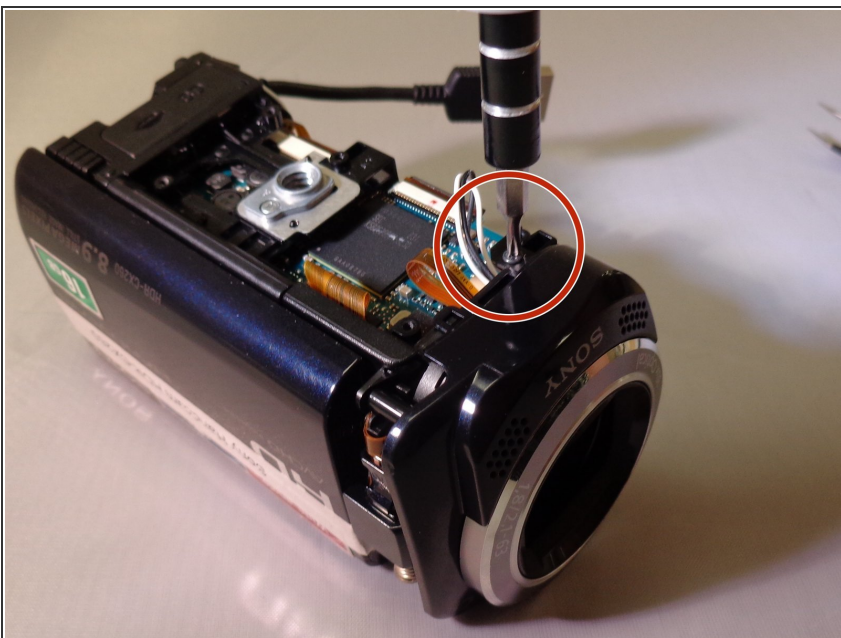
- Remove the 5mm screw located on the top left near the camera lens.

Step 11



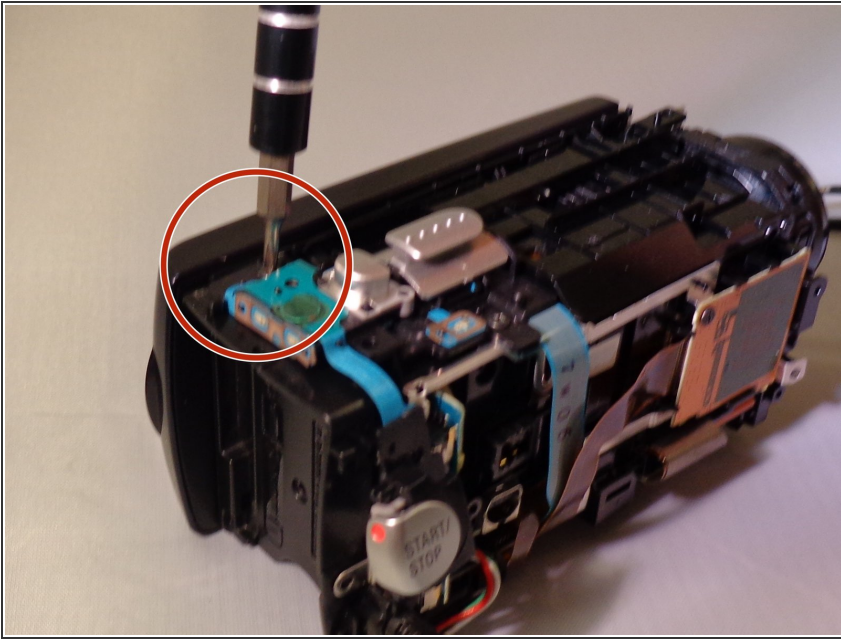
- Using tweezers, carefully detach the two wires connected to the bottom motherboard portion of the camera.
- ⓘ One white wire, one black wire, and one flat yellow wire are connected to the lens panel.
- Remove the lens panel.

Step 12



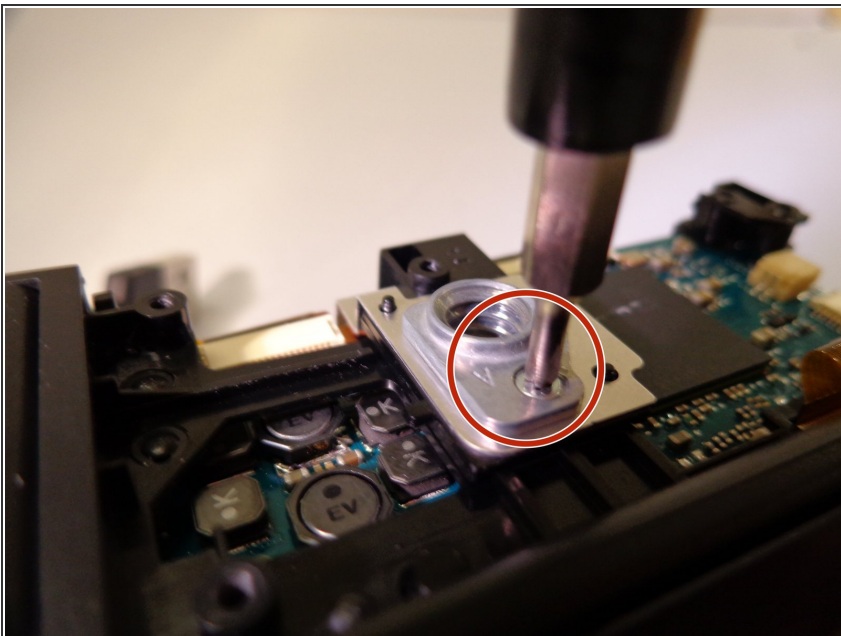
- Remove the three 5mm screws.
- ⓘ One is located at the bottom of the lens area, and the other two are on the top left and right of the lens area.
- Carefully remove the camera lens with your hands or a spudger.
- ★ There are three springs located underneath the lens. Make sure to not lose them.

Step 13



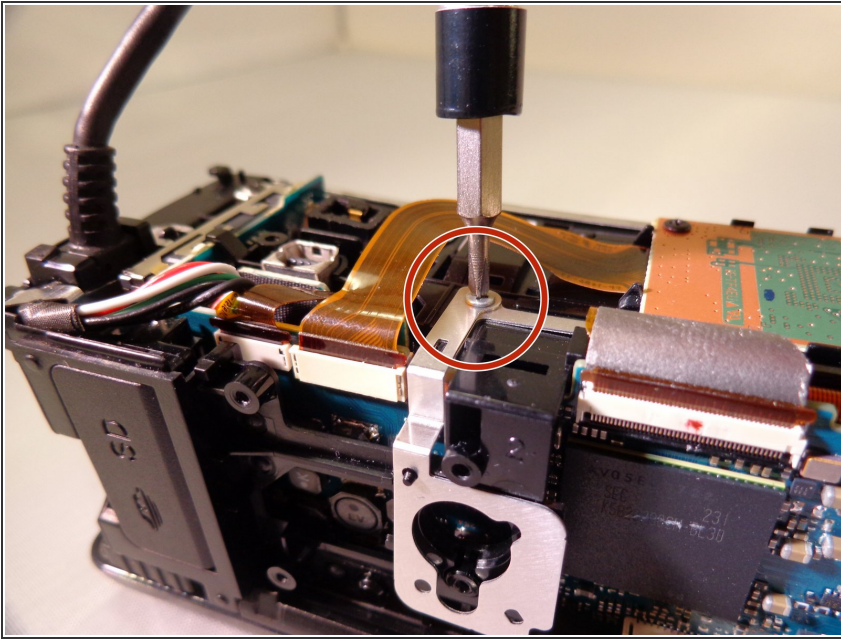
- Remove one 5mm screw located on the back left section near the zoom and picture control capturing button.
- There are two flat blue wires keeping the buttons connected to the main assembly. Carefully set them aside or unplug them.
- ❗ This partially removes the zoom and picture capturing control.

Step 14



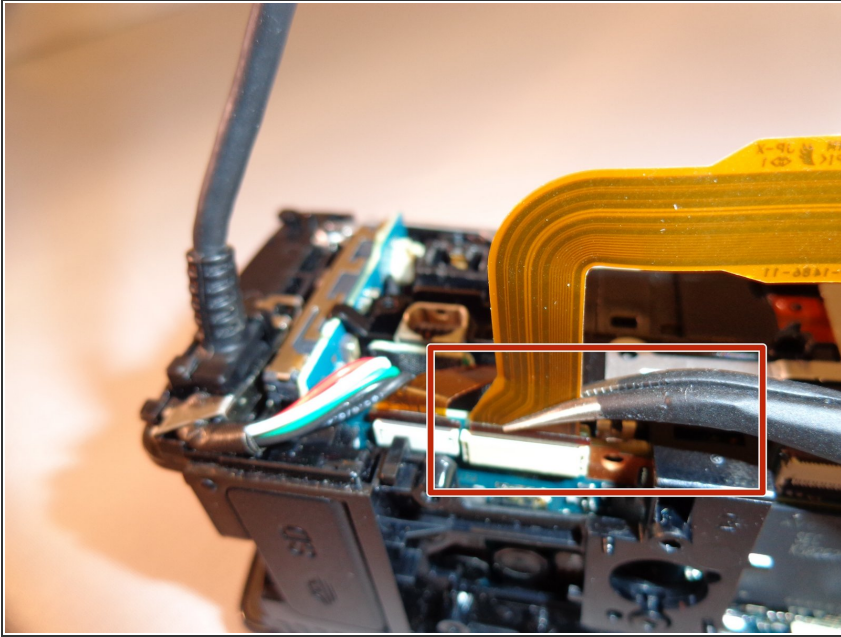
- Remove one silver 5mm screw located near the tripod mount.
- Remove the tripod mount screw that has the mount assembly underneath.

Step 15



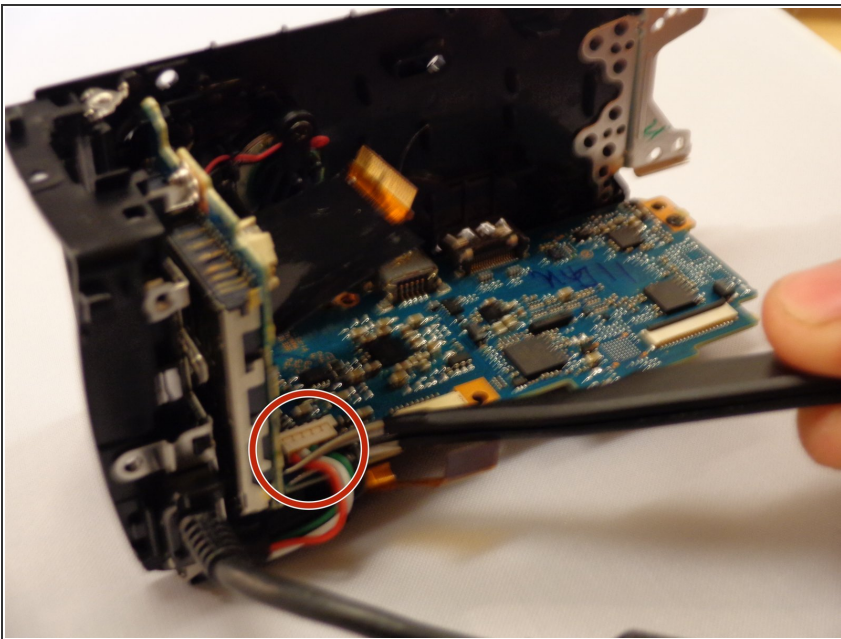
- Remove the silver 5mm screw located on the front right side of the camera by the orange motherboard.
- Unplug the wire.
- Remove the silver 5mm screw underneath the wire.

Step 16



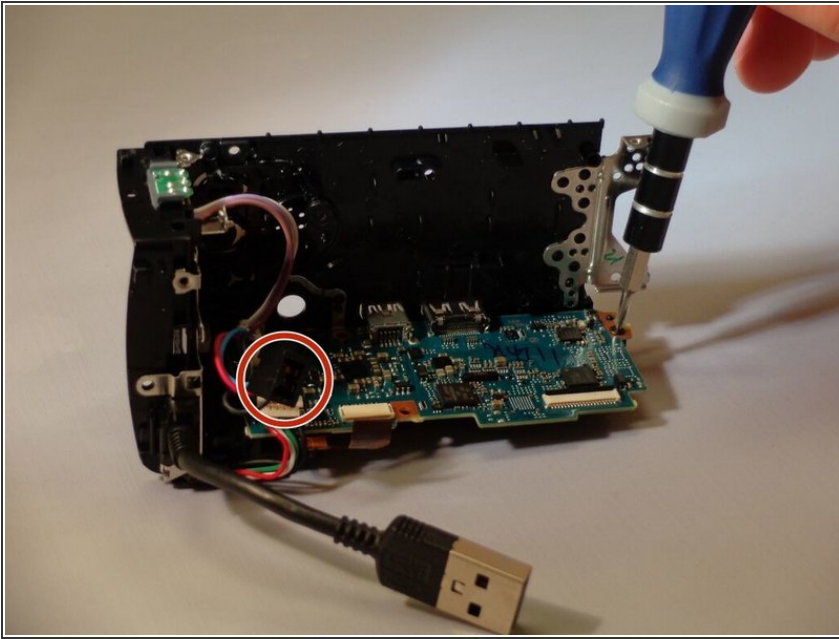
- Using tweezers, release the clip attaching the main internal system to the mainframe. This allows the rest of the camera to be freely taken apart.
- ⓘ The side panel will have cords running through the frame. If you unplug these, the frame will be removable.

Step 17 — SD Card Slot



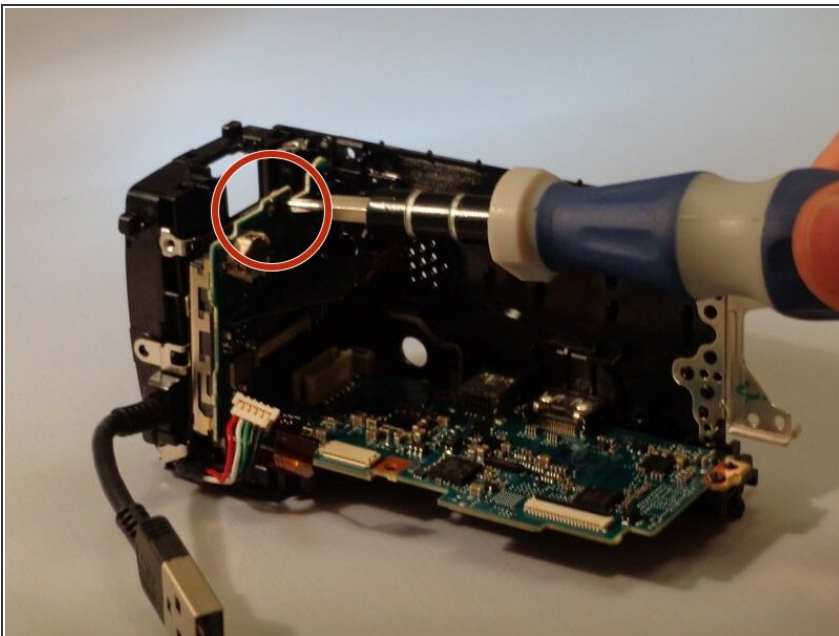
- Unplug the multi-colored wires using a pair of tweezers.

Step 18



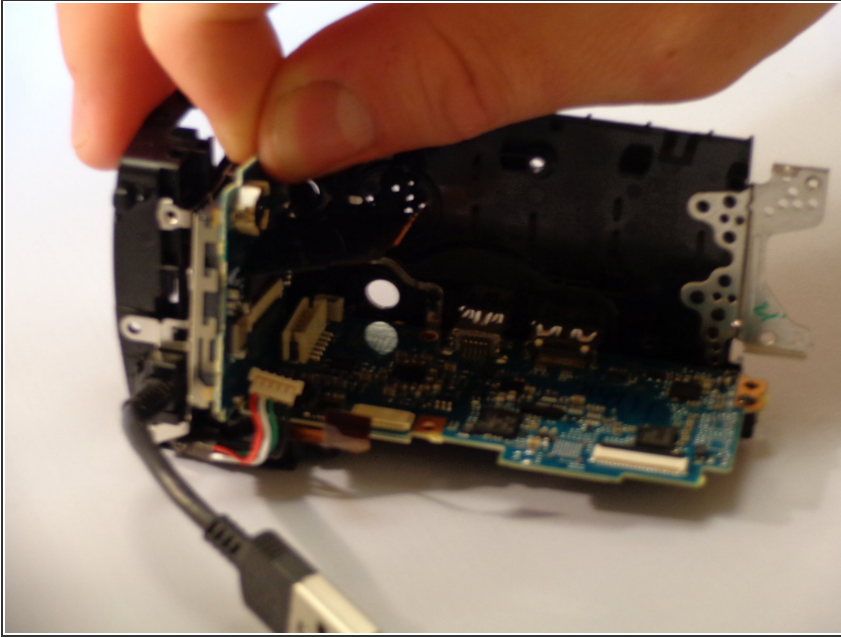
- Unplug the black ribbon connected to the motherboard on the back of the camera.

Step 19



- Use the Phillips #00 screwdriver to remove the 3 mm black screw that connects the SD card to the frame in the middle of the camera.

Step 20



- Remove the SD card assembly.

To reassemble your device, follow these instructions in reverse order.