



# **Samsung Galaxy Ace Touch screen Glass, LCD Display, Earpiece, Loudspeaker, Main Camera Replacement**

Samsung Galaxy Ace Touch screen Glass, LCD Display Replacement

Written By: ZFix



---

## INTRODUCTION

S5830, S5830i - how to disassemble and change / replace the loudspeaker, earpiece, main camera, LCD Display, Touch screen Digitizer Glass, etc.

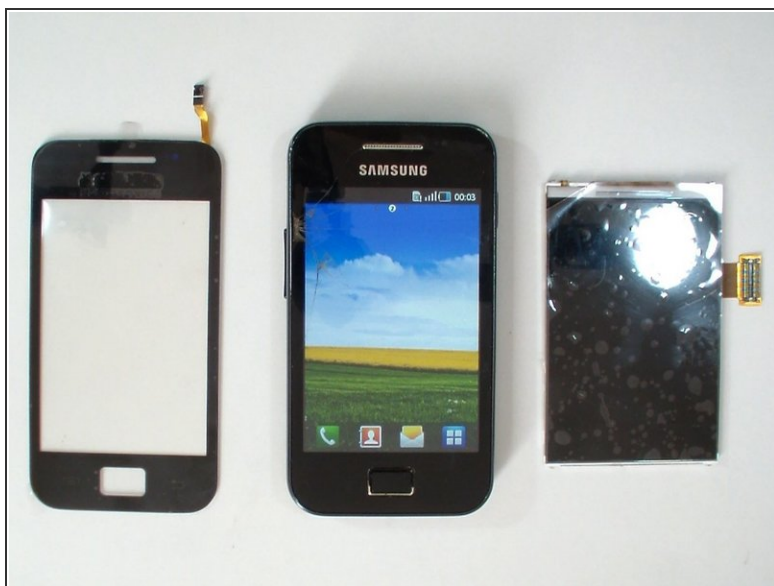
[video: <https://www.youtube.com/watch?v=pMEx34gMtLI>]



### TOOLS:

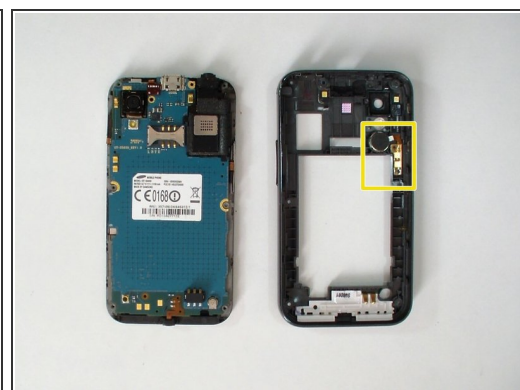
- [Spudger](#) (1)
  - [iFixit Opening Tools](#) (1)
  - [Phillips #00 Screwdriver](#) (1)
  - [Tweezers](#) (1)
-

## Step 1 — Touch screen Glass, LCD Display, Earpiece, Loudspeaker, Main Camera



- Switch off the phone.
- Remove the battery and any installed SIM and memory card.

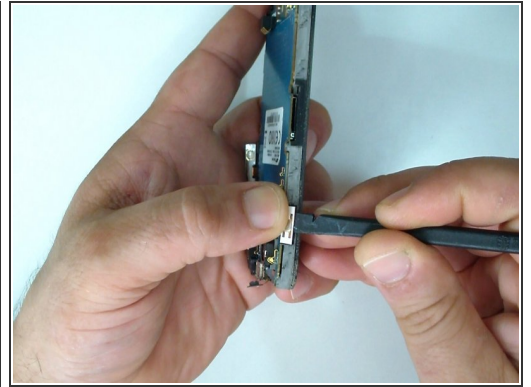
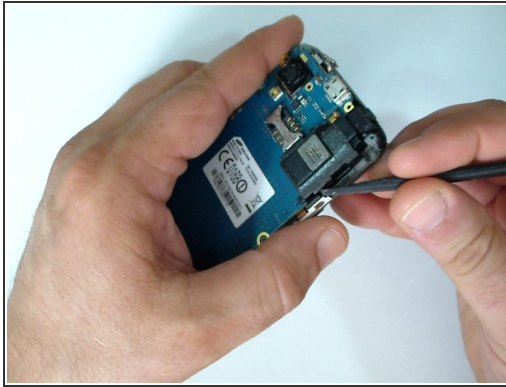
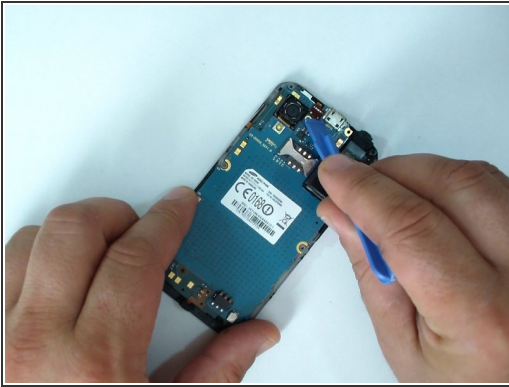
## Step 2



- Remove the 7 Phillips screws.
- Use a plastic tool to remove the back cover.
- vibrating motor



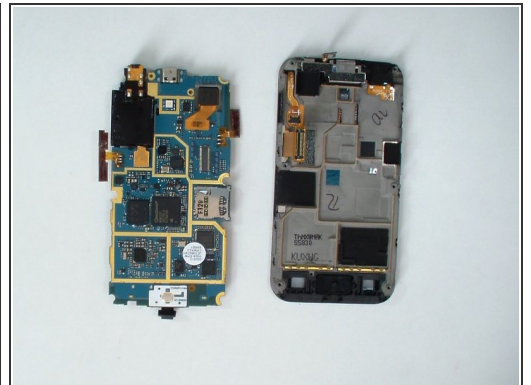
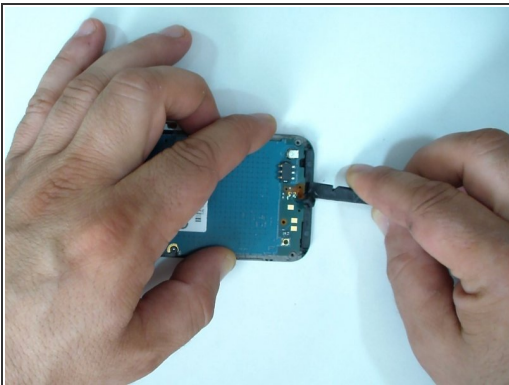
## Step 3



- Disconnect the earpiece & light sensor flex cable.
- Take off the Volume Up/Down buttons flex cable.
- Do the same with the Power button flex cable.

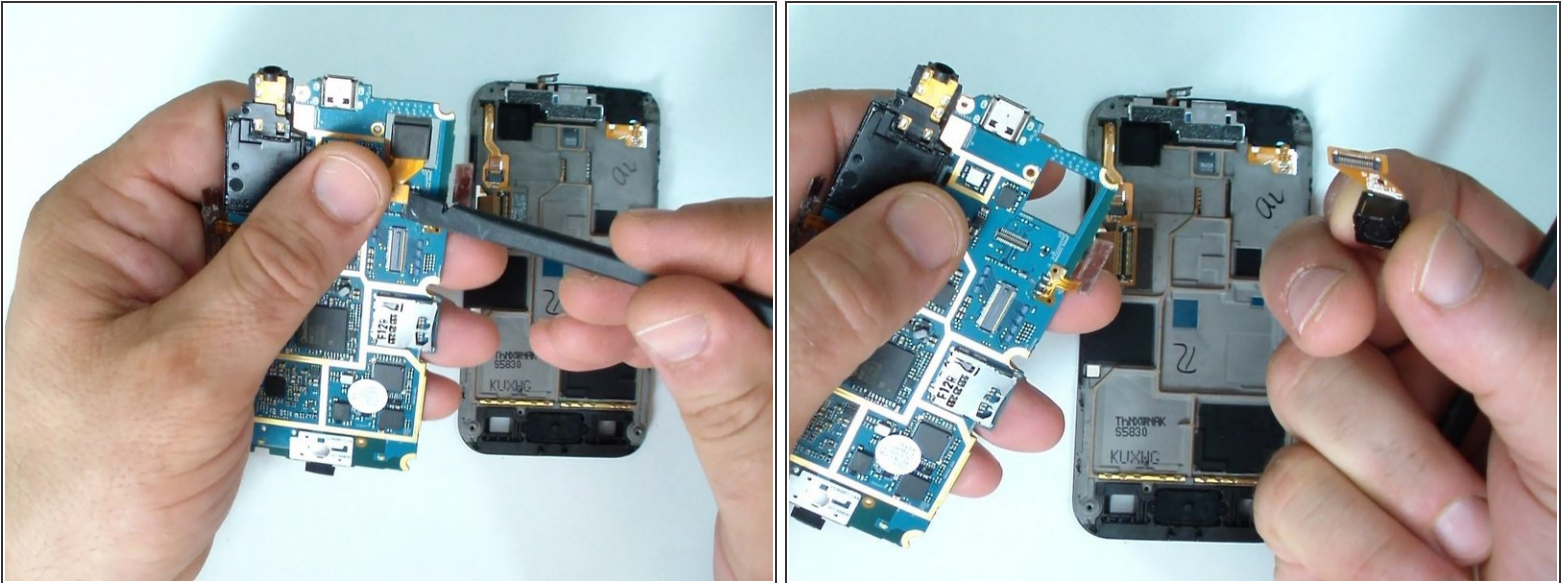
⚠ Be careful don't brake the flex cables.

## Step 4



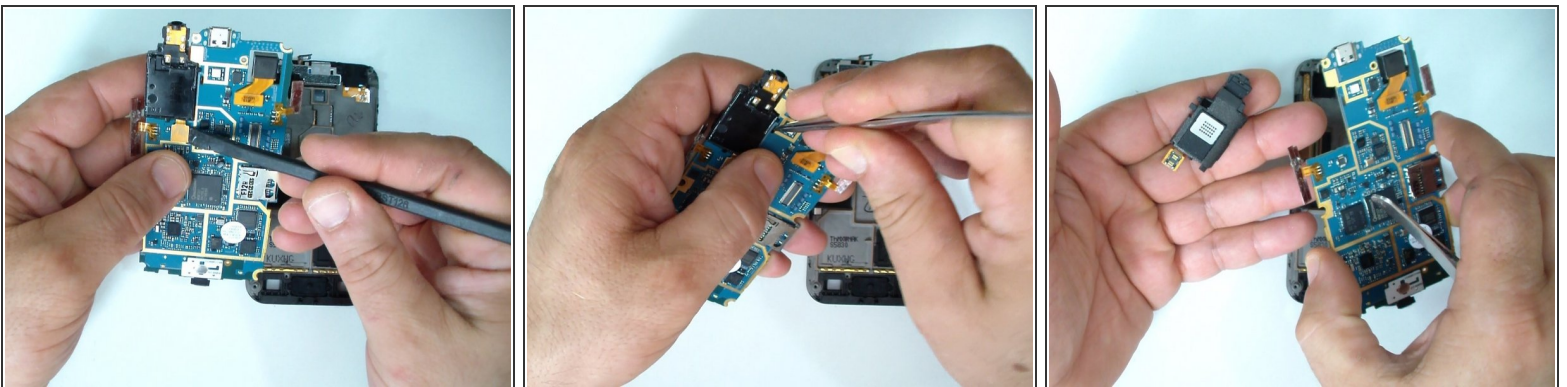
- Lift the microphone.
- Lift the board from the right side and disconnect the LCD display flex cable.
- Remove the board from the middle frame.

## Step 5



- This is the main camera.

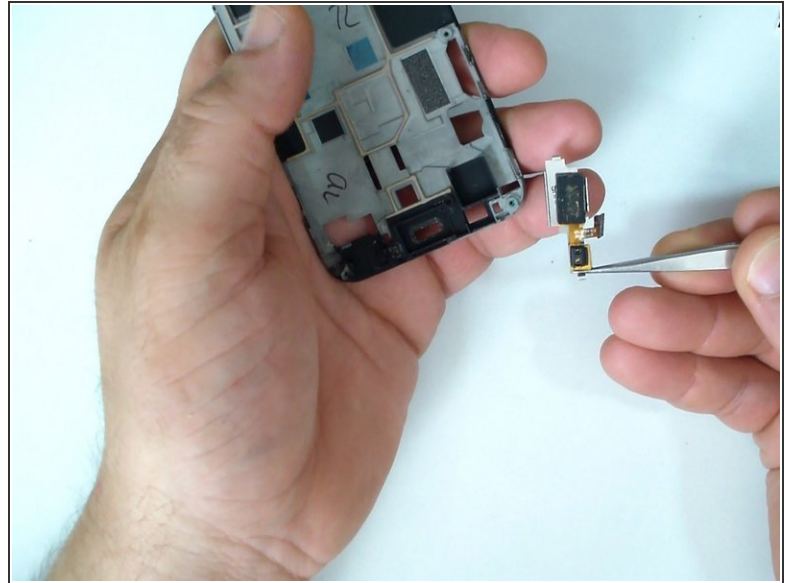
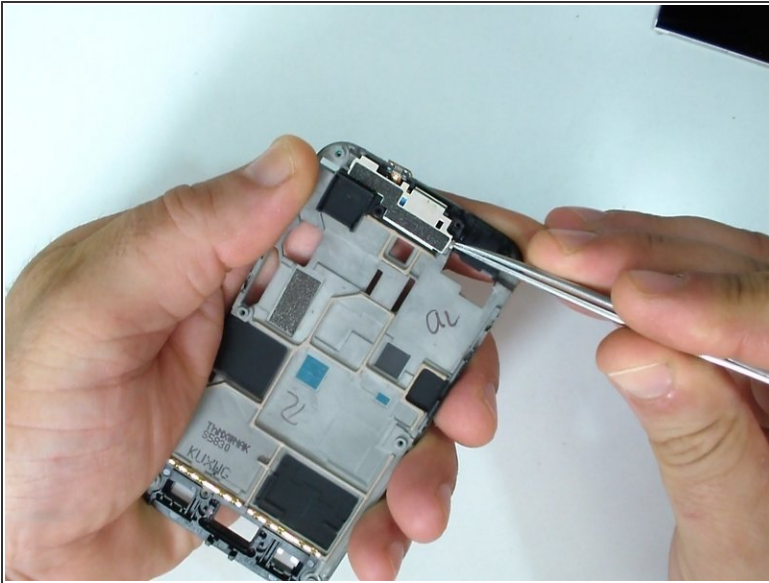
## Step 6



- This is the loudspeaker & audio jack connector module.

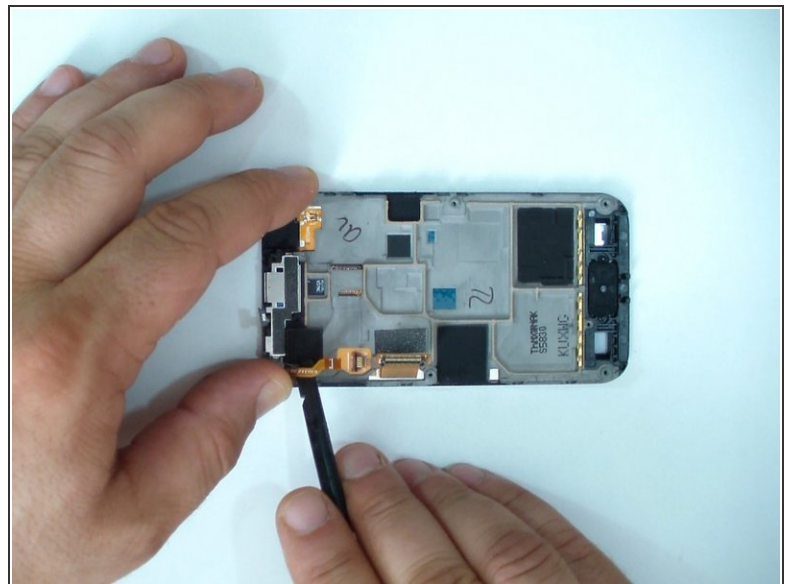
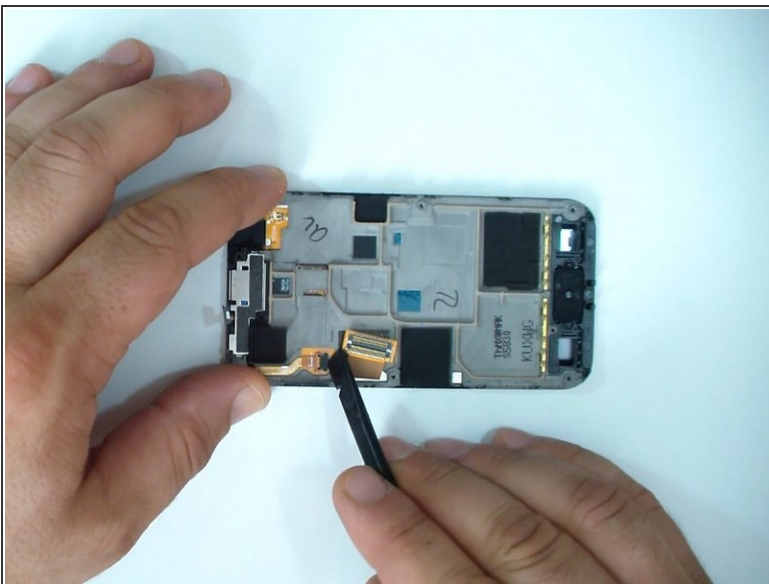


## Step 7



- Loudspeaker and light sensor module,

## Step 8



- Disconnect the touch screen flex cable.

## Step 9



- Use a hair dryer and warm the touch screen glass to make adhesive soften.
- Use a plastic tool for separating the glass from the middle frame.

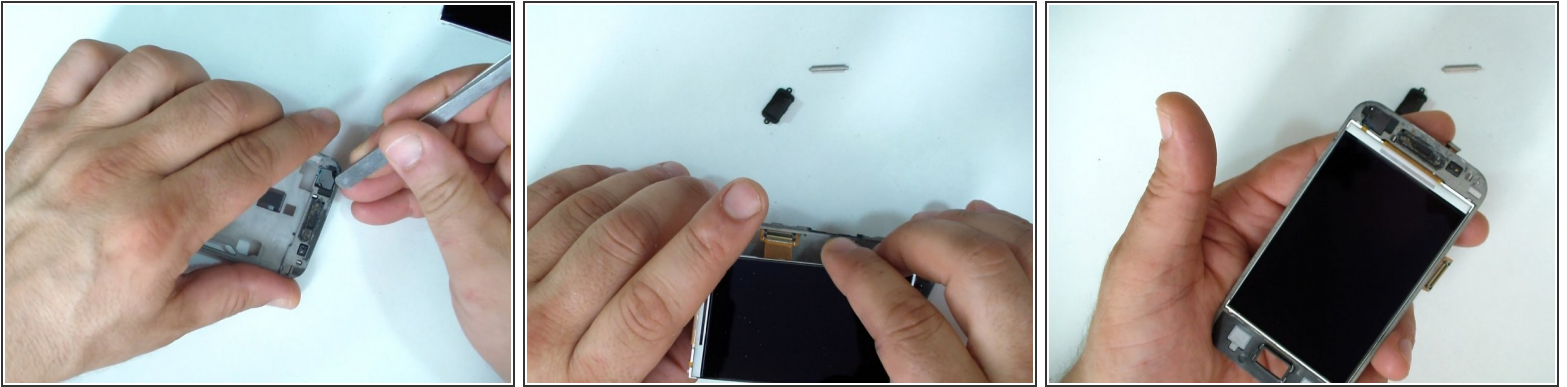
## Step 10



- Again by using a plastic tool, separate the LCD display from the middle frame.



## Step 11



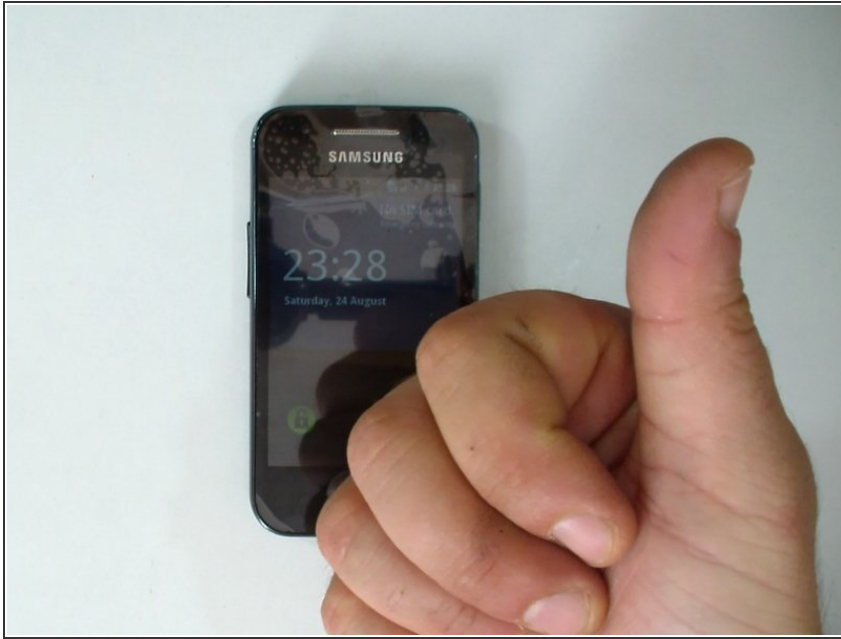
- Clean the middle frame and install the LCD display.

## Step 12



- Install the touch screen and start with reassembling.

## Step 13



- That is all.
- .
- .
- .
- .
- **Did you do it successfully?**

To reassemble your device, follow these instructions in reverse order.