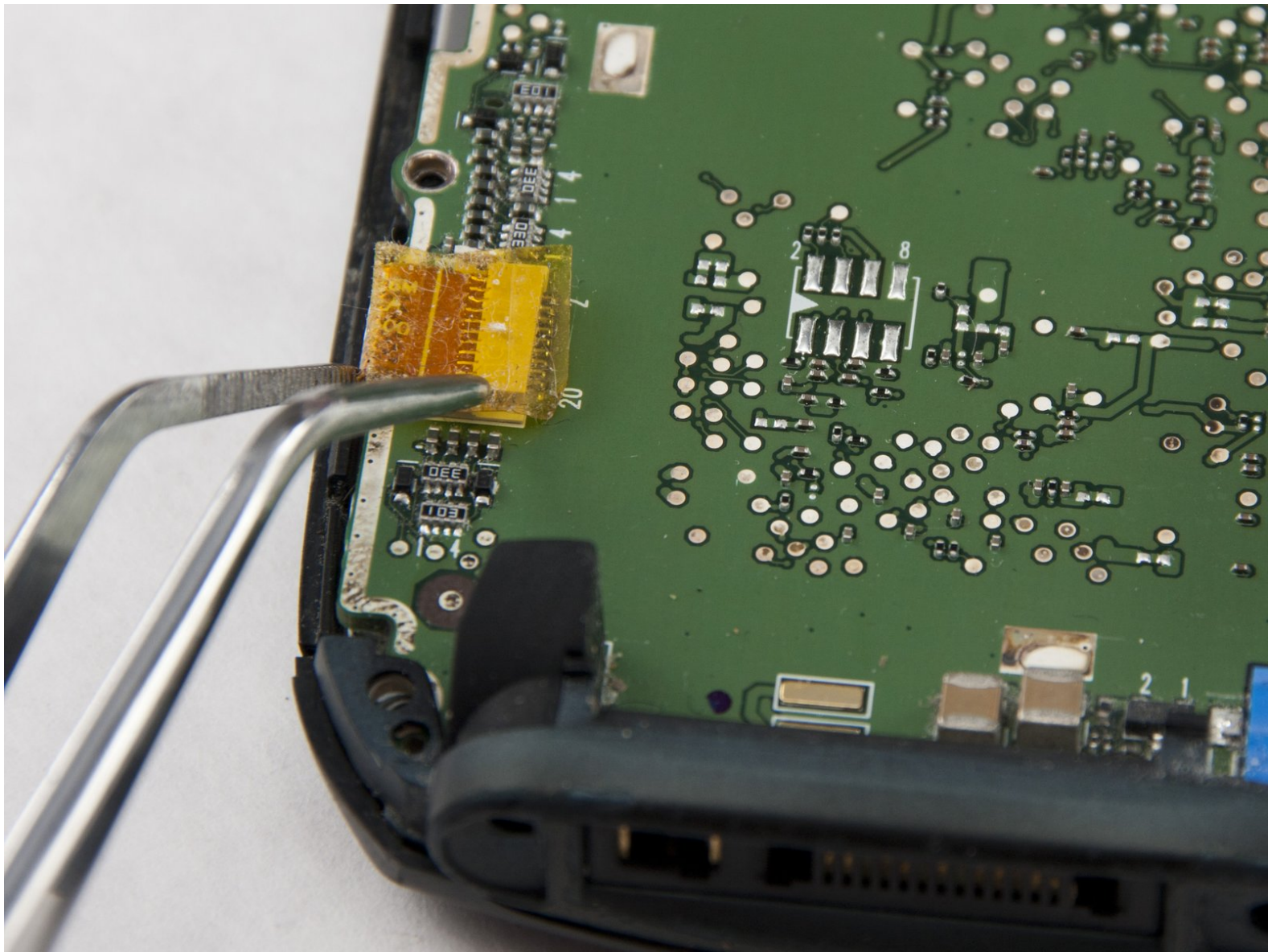




Palm Treo 755p Circuit Board Replacement

Remove the circuit board of a Palm Treo 755p.

Written By: Mike Shaw



INTRODUCTION

This will remove the circuit board from the front portion of the phone to reveal the keyboard and screen.



TOOLS:

- [Tweezers](#) (1)
 - [Phillips #00 Screwdriver](#) (1)
-

Step 1 — Battery



- Press the button on the back cover to release the battery cover.
- Slide off the battery cover.

Step 2



- Remove the battery by lifting up on one side.

Step 3 — Back Cover



- Remove the stylus by pulling up on the large top to reveal the top left case screw.
- Pull away the black flap to reveal the top right case screw.

Step 4



- Use a T5 screwdriver to remove the five 7 mm black/red back case screws.
- Use a T5 screwdriver to remove the middle 3.1 mm screw.

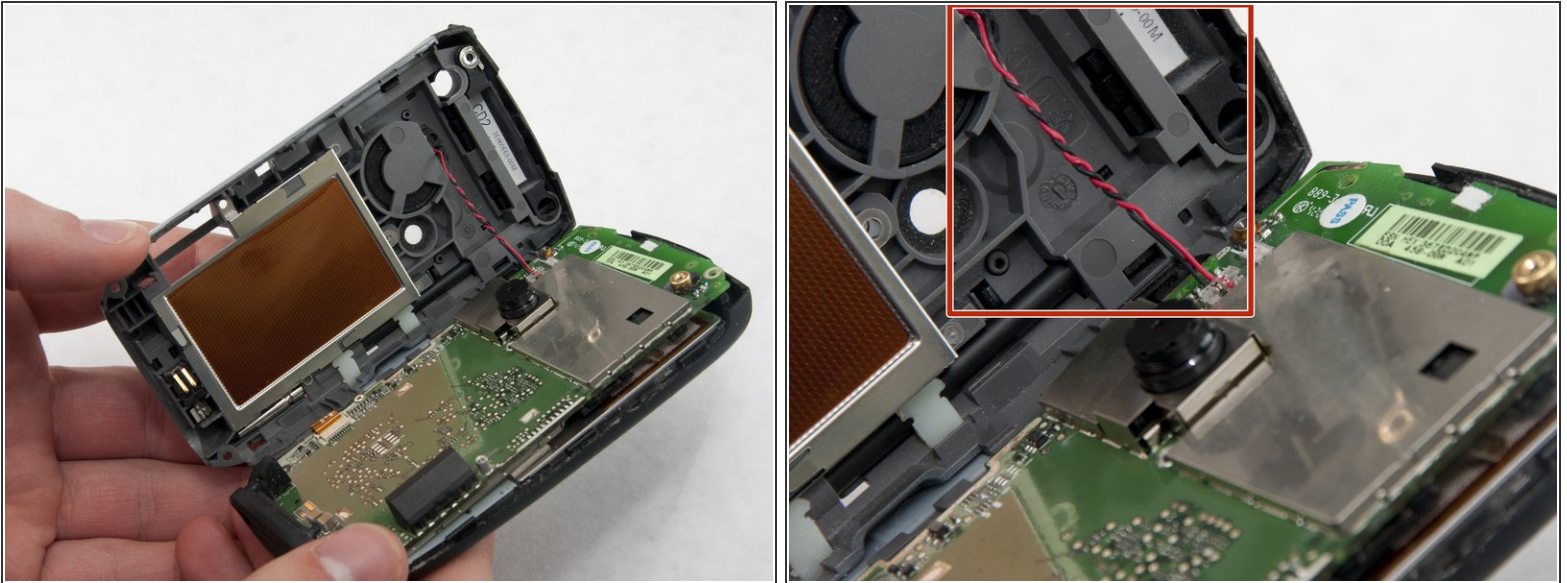
Step 5



- Use the plastic opening tool to pry open the device. Start on the volume control side (left side of the screen) and work your way up along the edge and across the top.

i The side volume control buttons may fall out after opening the device.

Step 6



- Slowly unfold the back casing away from the front casing revealing the red and black wound wire speaker cable, marked by the red box.

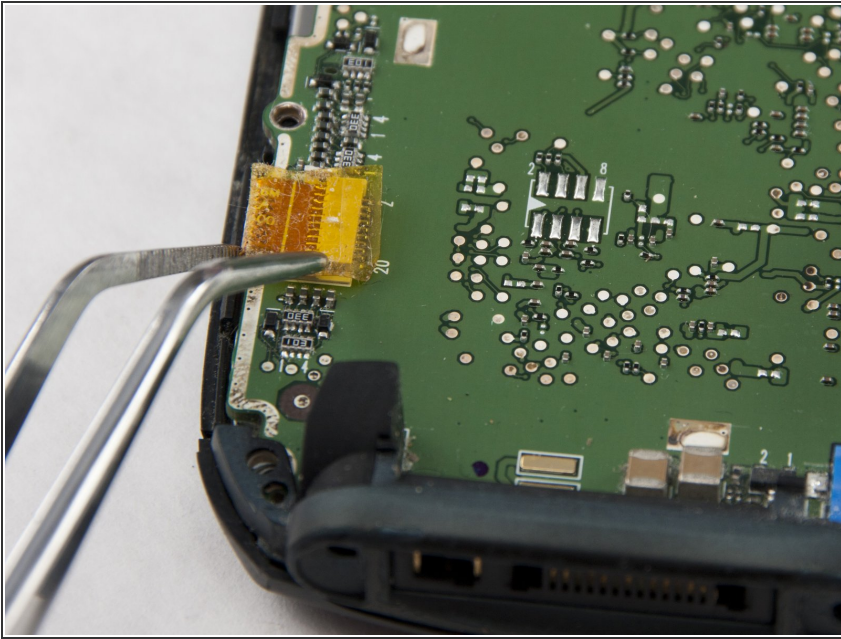
⚠ Potential for device damage: Be gentle while separating the halves to prevent breaking the red and black wound wire speaker cable that bridges both halves.

Step 7



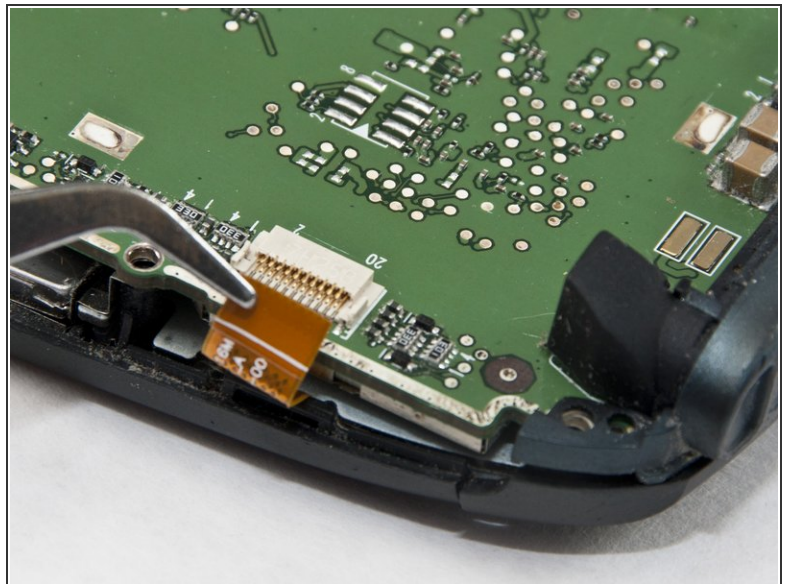
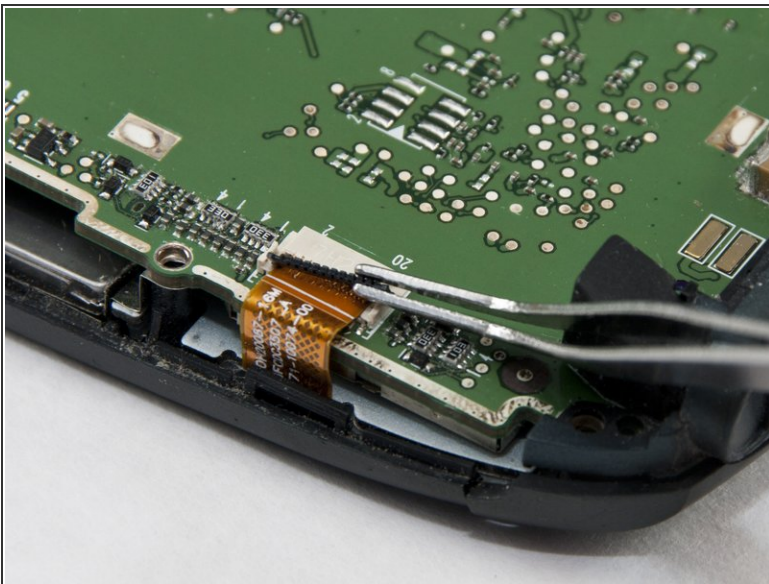
- Using tweezers, squeeze the plastic head of the black and red wound wire cable. This will detach the cable from the circuit board and fully separate the two halves.

Step 8 — Circuit Board



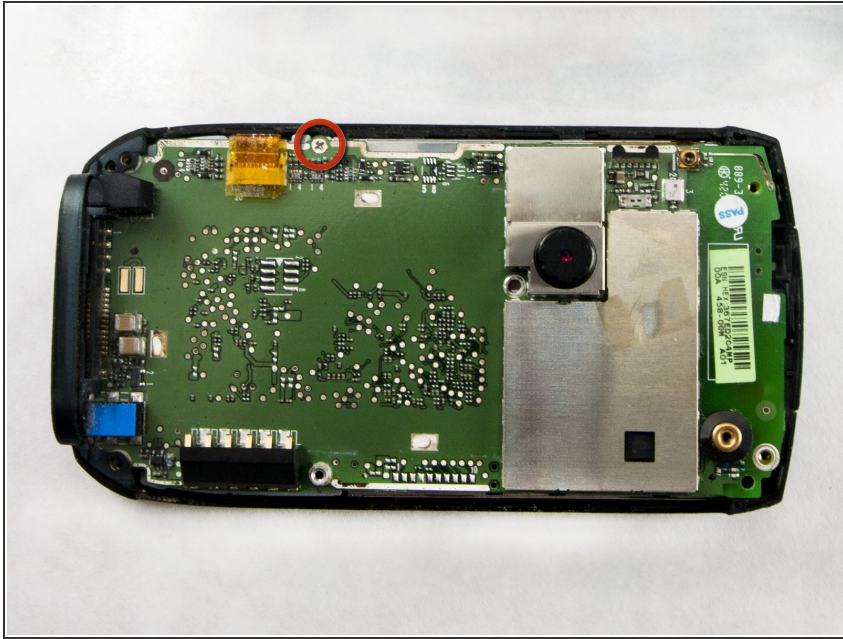
- Gently peel off the protective yellow tape covering the ribbon cable using tweezers or your fingers.
- ⓘ **ATTENTION:** Save the tape for reassembly.

Step 9




- Using tweezers flip up the black plastic snap covering the small ribbon cable.
- Using tweezers gently pull out the ribbon cable to detach it from the circuit board.

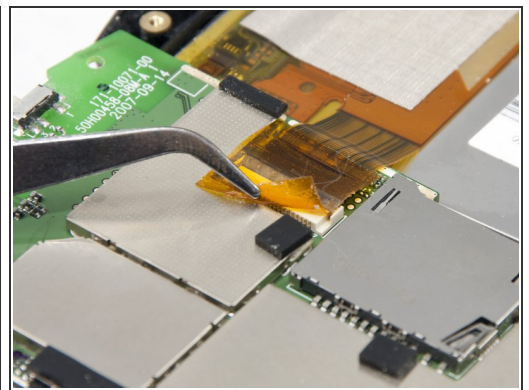
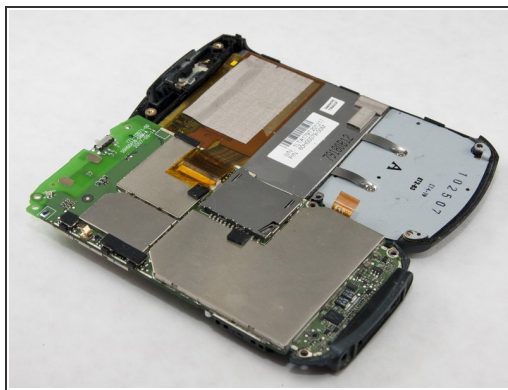
Step 10




- With the screen facing down. Use the Phillips 00 screwdriver attachment to remove the silver, 0.124 inch long screw on the left side of the circuit board above the ribbon cable.

 **WARNING:** Do not over-tighten the screw during reassembly.

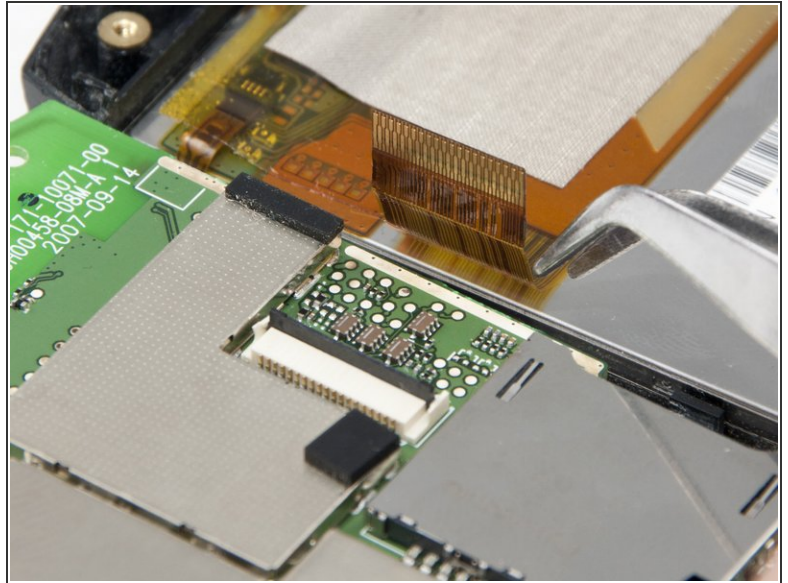
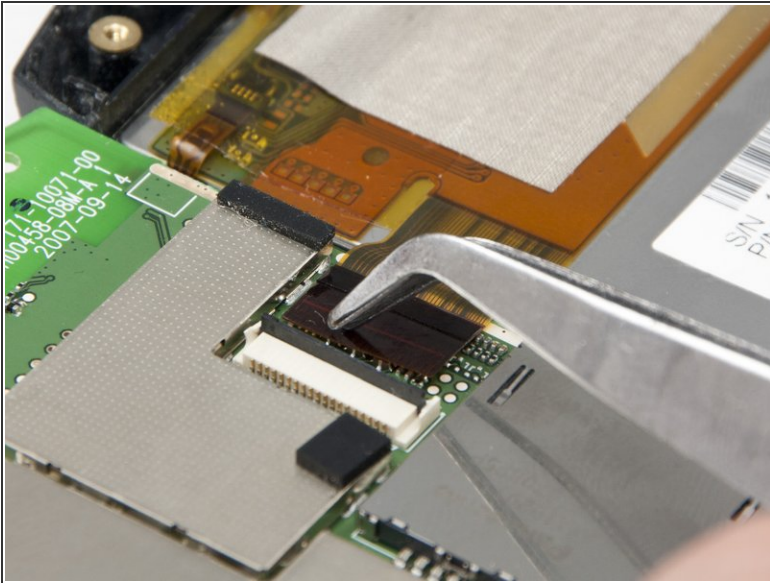
Step 11



- Pivot the circuit board away from the casing keeping the screen face down.
- Gently peel away the tape holding the ribbon cable to the screen.

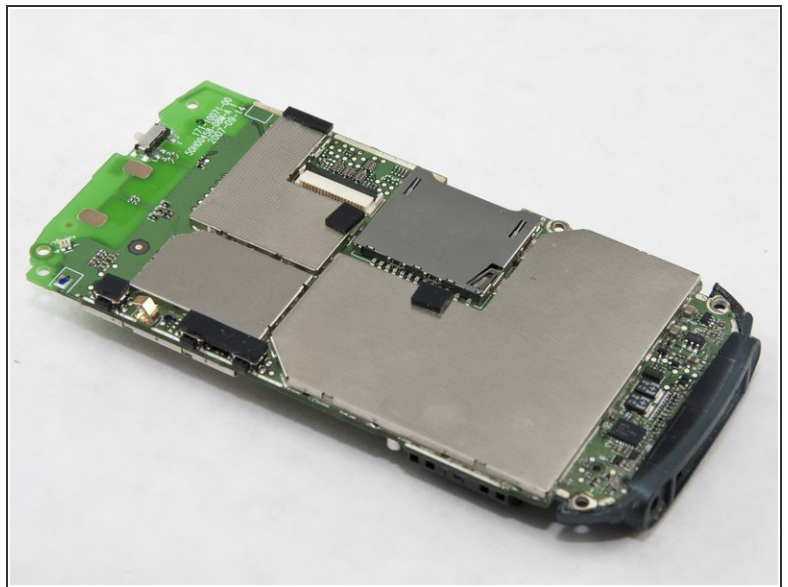
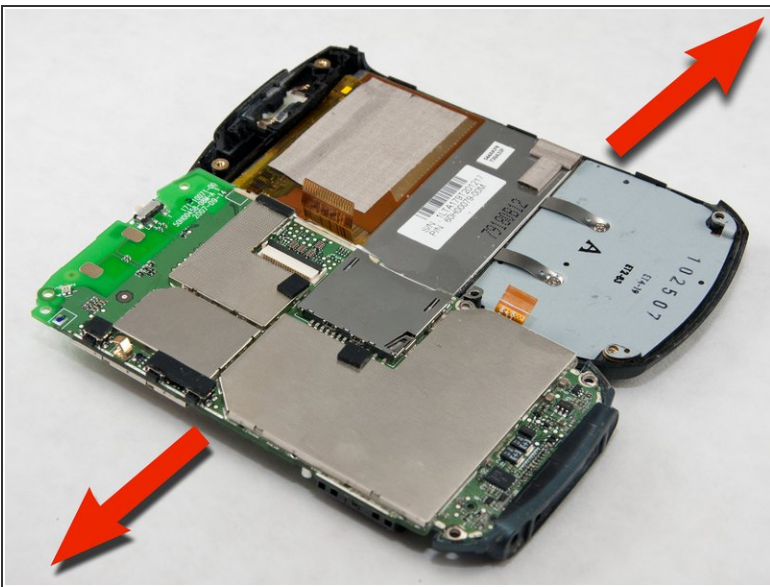
 **ATTENTION:** Save the tape for reassembly.

Step 12



- Using tweezers flip up the black plastic snap covering the ribbon cable attached to the screen.
- Gently pull out the ribbon cable freeing the circuit board from the casing.

Step 13



- Separate the circuit board from front cover.

To reassemble your device, follow these instructions in reverse order.