



# Disassembling Canon Powershot SD880 Menu Button

This may need to be removed if the button or...

Written By: Ben Tupas



---

## INTRODUCTION

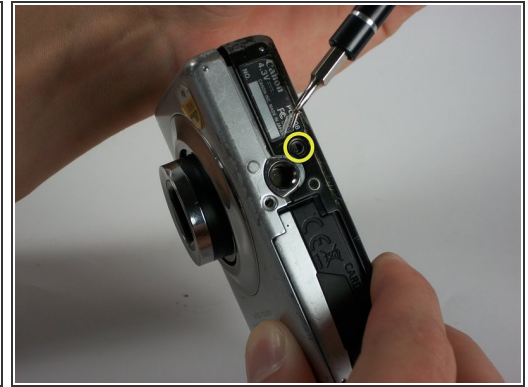
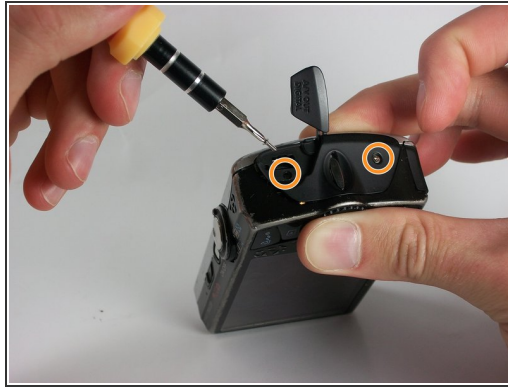
This may need to be removed if the button or scroll wheel is not working.



### TOOLS:

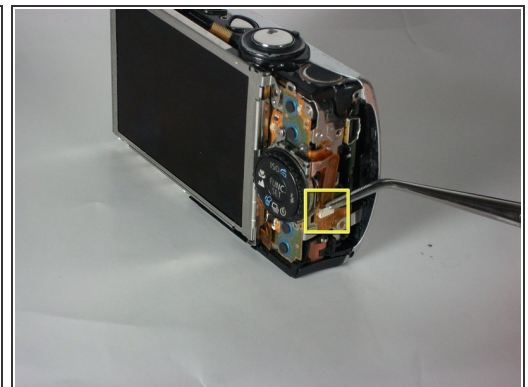
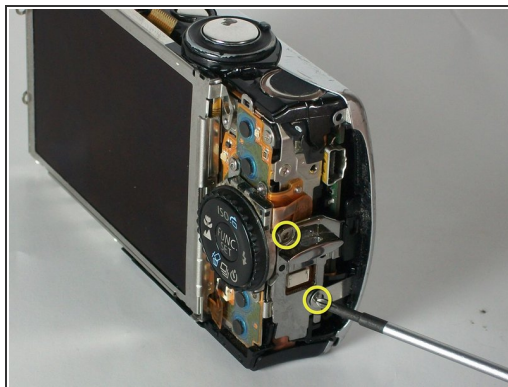
- [Phillips #0 Screwdriver](#) (1)
-

## Step 1 — Back Cover



- Remove the two 2.4 mm screws on the side of the camera that are next to the LCD screen using a Phillips #00 screwdriver.
- Remove the two 4.1 mm screws on the other side using a Phillips #00 screwdriver.
  - ❗ One screw will be located under the rubber USB flap.
- Remove the single 2.6 mm screw from the bottom of the camera using a Phillips #00 screwdriver.
- Slowly pull the back cover off of the camera.

## Step 2 — Menu Button



- Remove 2 screws from back of camera using screwdriver.
- Remove 2 screws holding metal side guard using screwdriver.
- Remove the connecting ribbon by pulling it straight out.

To reassemble your device, follow these instructions in reverse order.