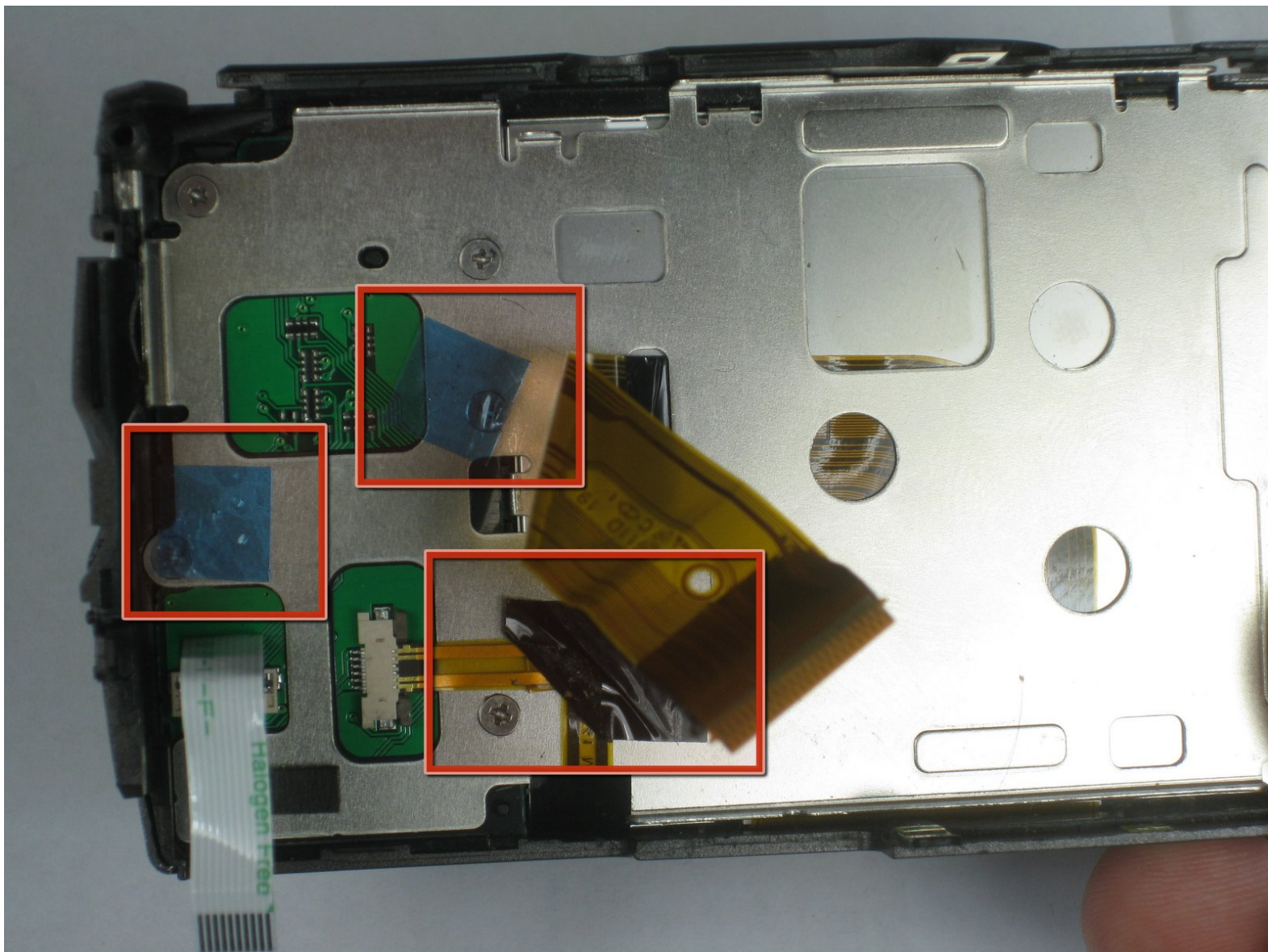




Olympus Stylus 1010 LCD Display Replacement

Replace the LCD Display in your Olympus Stylus 1010.

Written By: Curtis Reedy



INTRODUCTION

Use this guide to replace the LCD.



TOOLS:

- [Phillips #00 Screwdriver](#) (1)
-

Step 1 — Disassembling Olympus Stylus 1010 Case



- Remove the five Phillips #00 bottom and right side panel screws.

Step 2



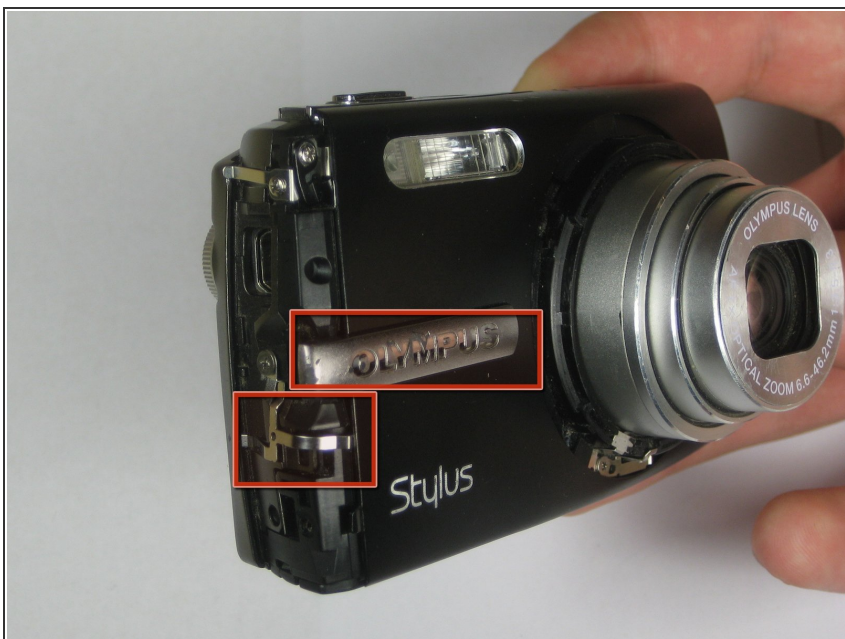
- Remove the right side panel by pulling off the large silver piece.

Step 3



- Remove the remaining three Phillips #00 side and front panel screws.

Step 4



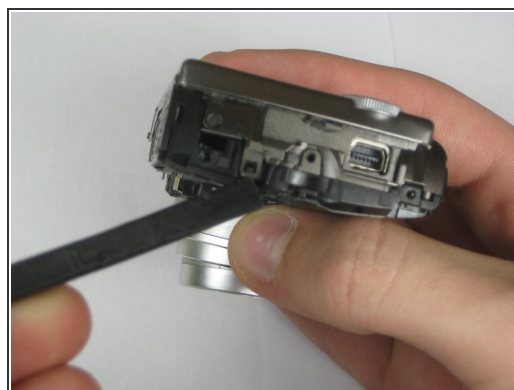
- Using your thumb and forefinger, pull off the silver name plate and silver "T-shape" piece.

Step 5



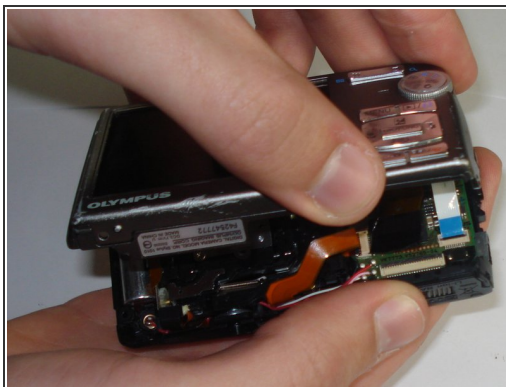
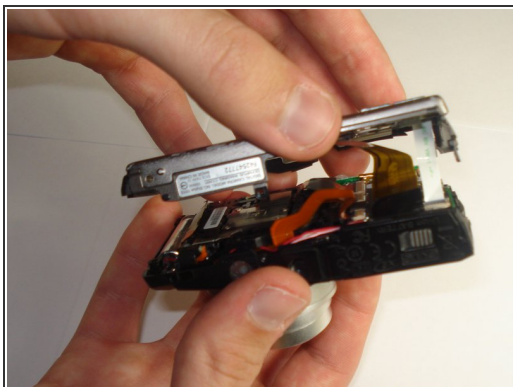
- Remove the black front panel by sliding it towards the lens and then pulling it up off of the camera.

Step 6



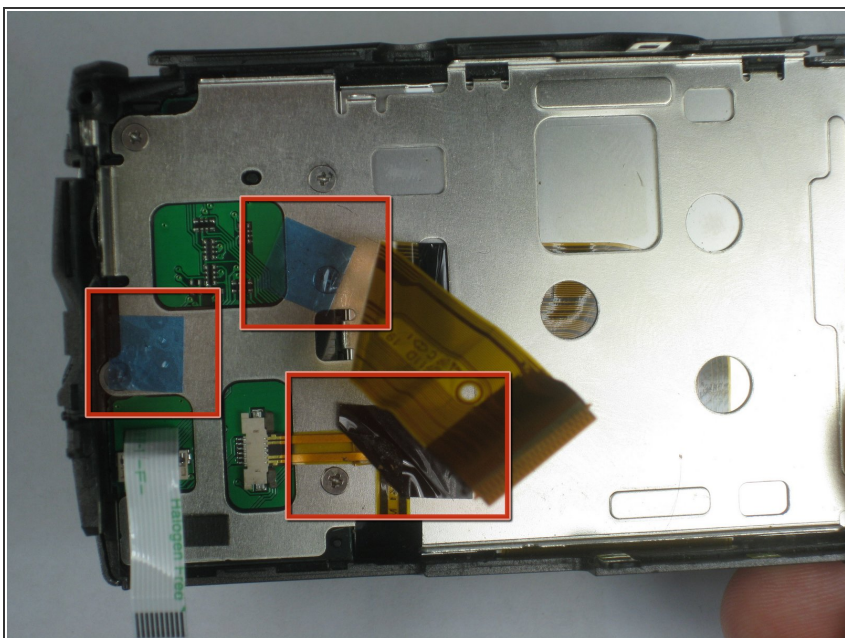
- Remove the three Phillips #00 screws from the front of the camera.
- Using a spudger, lift the two tabs to separate the case—one tab on top and one tab on the right side.

Step 7



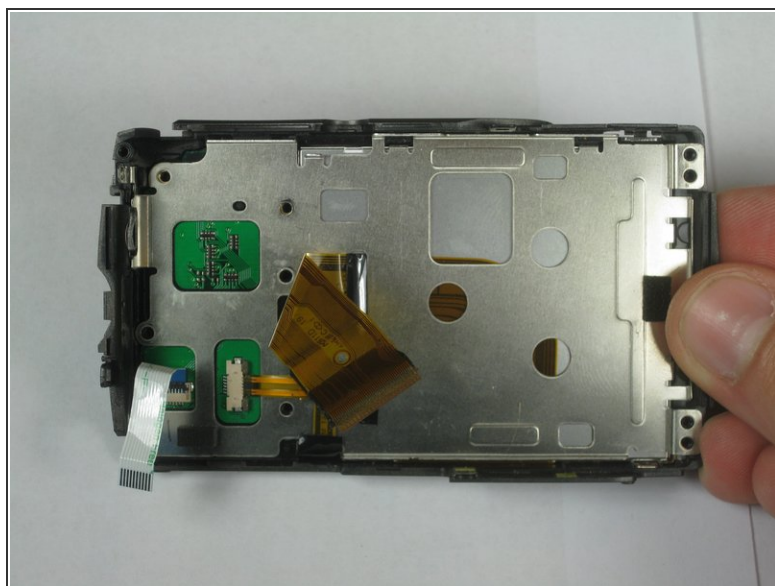
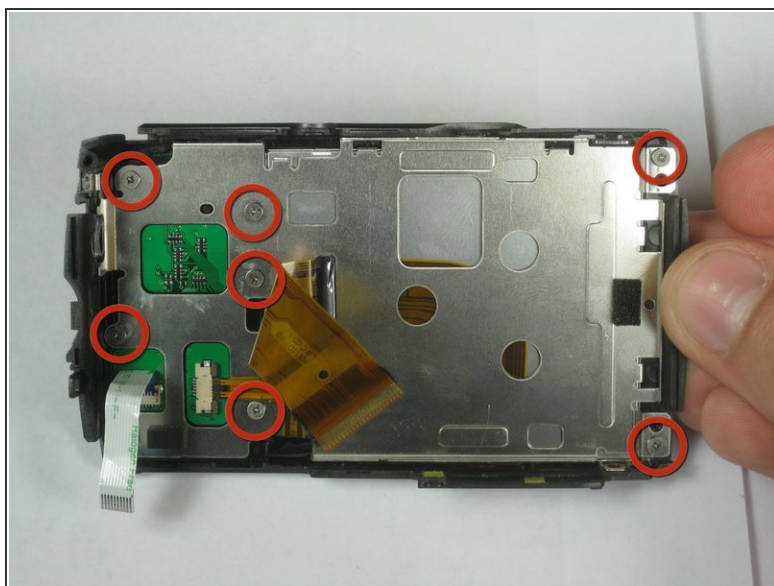
- Using a plastic spudger, lift up the black clips.
- Still using the plastic spudger, detach the gold connector strip and white connector strip.
- Using both hands, pull the camera apart into two pieces.

Step 8 — LCD Display



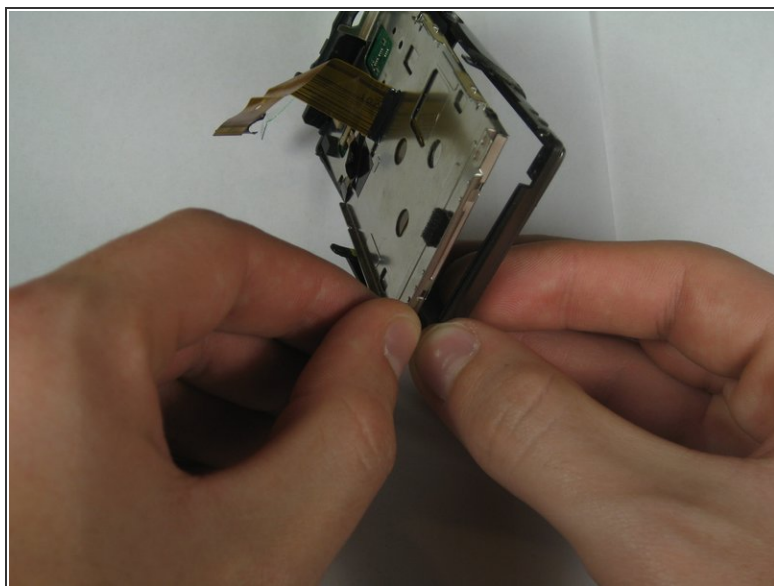
- Peel up the blue and black tape. This can be done with a spudger.

Step 9



- Unscrew the screws. (6 screws)(photo shows 7 screws -editorial comment)

Step 10



- Push out the LCD screen by pushing on the screen side.

To reassemble your device, follow these instructions in reverse order.