



# Samsung SGH-E317 Camera Replacement

This guide will show you how to replace the...

Written By: Michael Strange





# INTRODUCTION

This guide will show you how to replace the camera in your Samsung SGH-E317. This guide will fix the issue if the lens is blurry, has a broken sensor, or cannot capture photos.

Before we start, it is important to know about some problems and how to avoid them. Make sure you have the right tools and a clean, bright workspace to keep your phone safe. It is all about taking your time and not rushing.

Be careful about static electricity, which can hurt your phone's insides. In step 6, when you work with the wires, pay attention to where you align the wedge so you don't break them.

With easy-to-follow instructions and lots of pictures, even if you're new to fixing stuff, you can do it. Pretty soon, your Samsung SGH-E317 camera will be back to normal.

Good luck replacing your Samsung SGH-E317 camera. This guide aims to cautiously disassemble your phone and avoid further damage.

---

## TOOLS:

[Tweezers](#) (1)

[Phillips #1 Screwdriver](#) (1)

[iFixit Opening Tool](#) (1)

---

## Step 1 — Camera



- Remove the plastic coverings at the base of the LCD screen using your fingers.



## Step 2



- Use the screwdriver to remove the two 4.5mm screws located underneath the plastic coverings.
- ① You may want to use tweezers to remove the loosened screws.

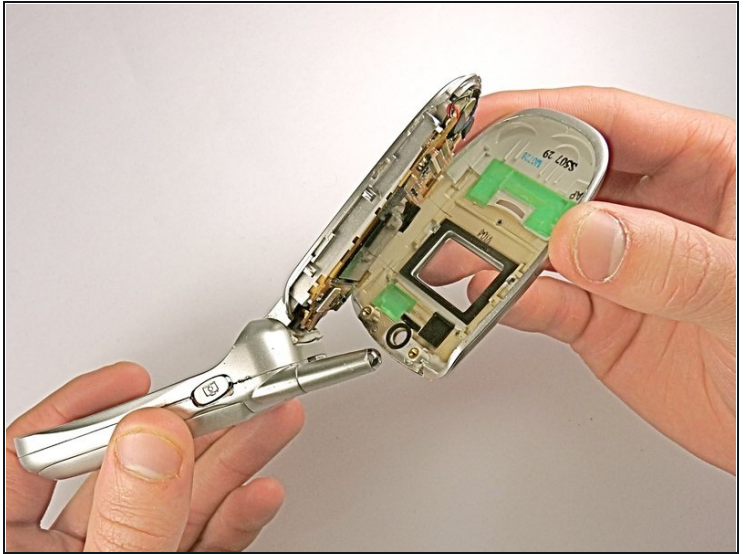
## Step 3



- Wedge the plastic opening tool under the crevice on the inner surface of the phone screen.
- Gently pry the top panel off around the entire frame.

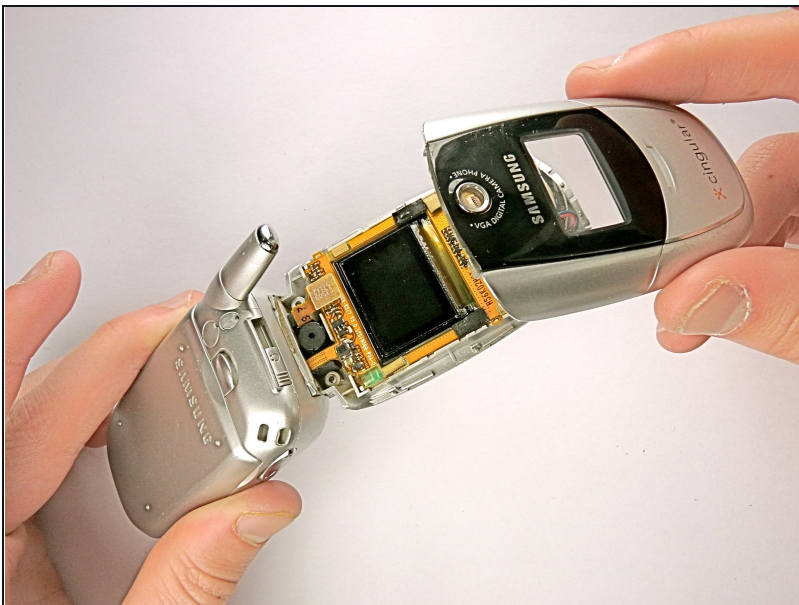


## Step 4



- ① Make sure that the top panel is completely separated from the LCD display around the entire perimeter.

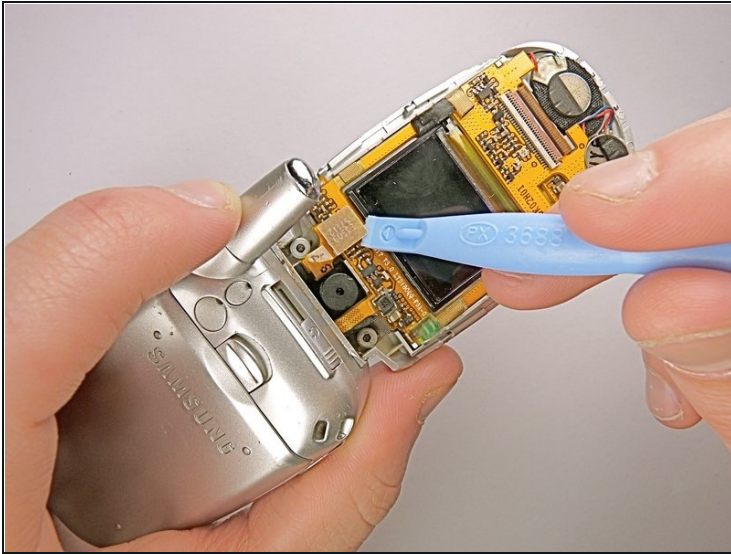
## Step 5



- Take the top panel off of the phone.



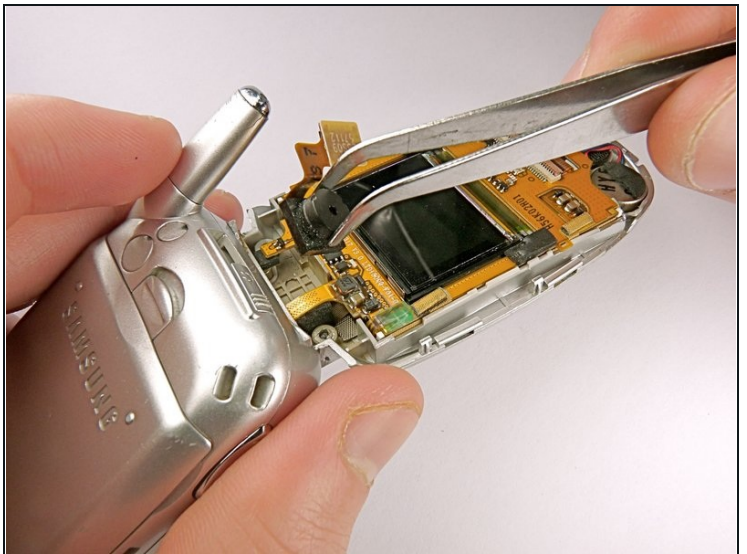
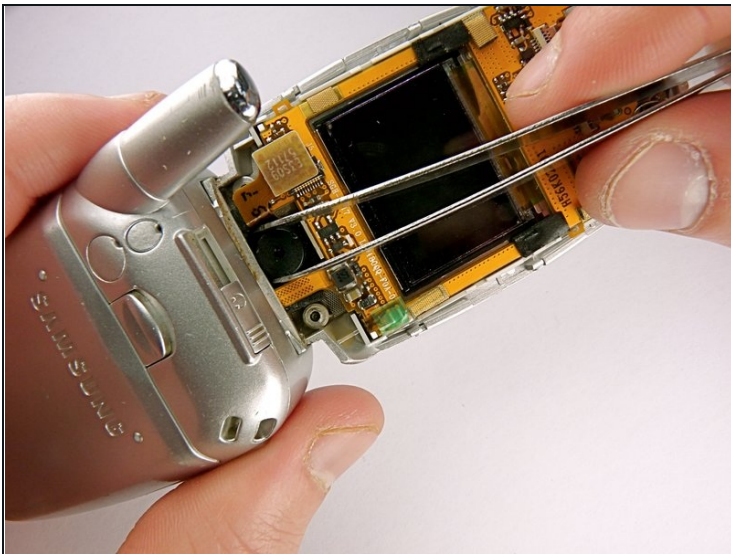
## Step 6



- Use the wedge to detach the connecting wire panel from the LCD display system.

⚠ Be gentle when dethatching this wire to prevent damaging surrounding components.

## Step 7



- Use the tweezers to remove the camera from the cellphone casing.

---

To reassemble your device, follow these instructions in reverse order.