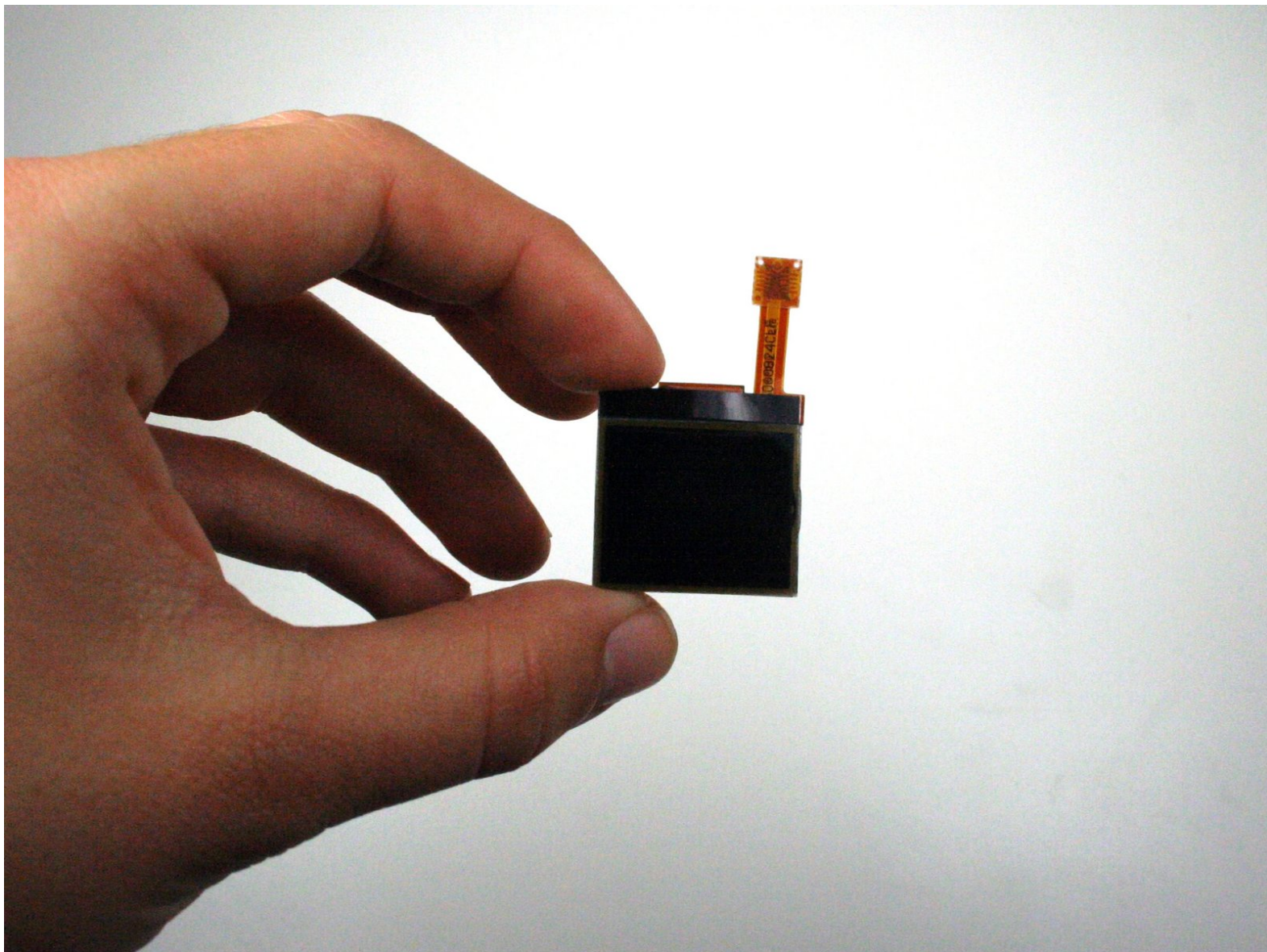




Disassembling Nokia 2366i Front Display

Written By: Michael Machado



INTRODUCTION

Removing a broken front display.



TOOLS:

- [Spudger](#) (1)
 - [T6 Torx Screwdriver](#) (1)
-

Step 1 — Battery



- Turn off the phone.
- ⓘ Position the phone so that the back side is in view.

Step 2



- Apply pressure on the cover while simultaneously sliding the cover downward.
- Remove the back battery cover.

Step 3



- Insert the spudger between the base of the phone and the phone battery.
- Position the phone so that the battery won't fall out of the phone.
- Carefully lift the battery out of the phone.
- ❗ The battery lifts out of the phone easily.

Step 4 — Front Cover



- Keep the phone closed.
- ❗ Hold the phones sideways with the front cover of the phone facing up.

Step 5



- Find the slight crease on the side that divides the display assembly in half.
 - Slowly wedge the spudger into the crease.
- ⚠ It's a little difficult to perform this step because the crease is narrow. Do not rush because you may damage the phone

Step 6



- Run the spudger all along the crease while lifting up.
- Separate the front cover from the front base.

Step 7 — Main Display



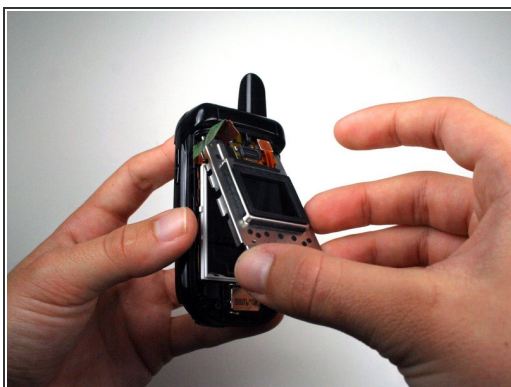
- Remove the four 5mm screws on the metal casing using the T6 Torx screwdriver.

Step 8



- Using the spudger, disconnect the green display cable.

Step 9



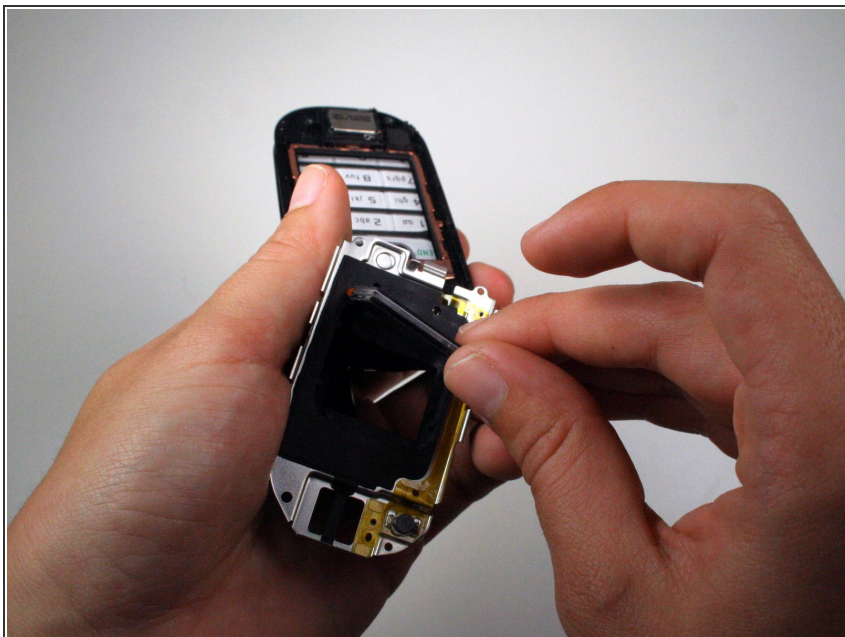
- Lift the metal casing.
 - ⚠ Be careful not to pull the casing too hard because it is still attached to the phone by a wire.
- Remove the main display from under the metal casing.

Step 10 — Front Display



- Fold the metal casing back over.
- Disconnect the orange front display data cable with the spudger.
- ⓘ Hold the phone so that the antenna is facing towards you.
- Lift up and flip over the metal casing.

Step 11



- Using your fingers, remove the front display.

To reassemble your device, follow these instructions in reverse order.

