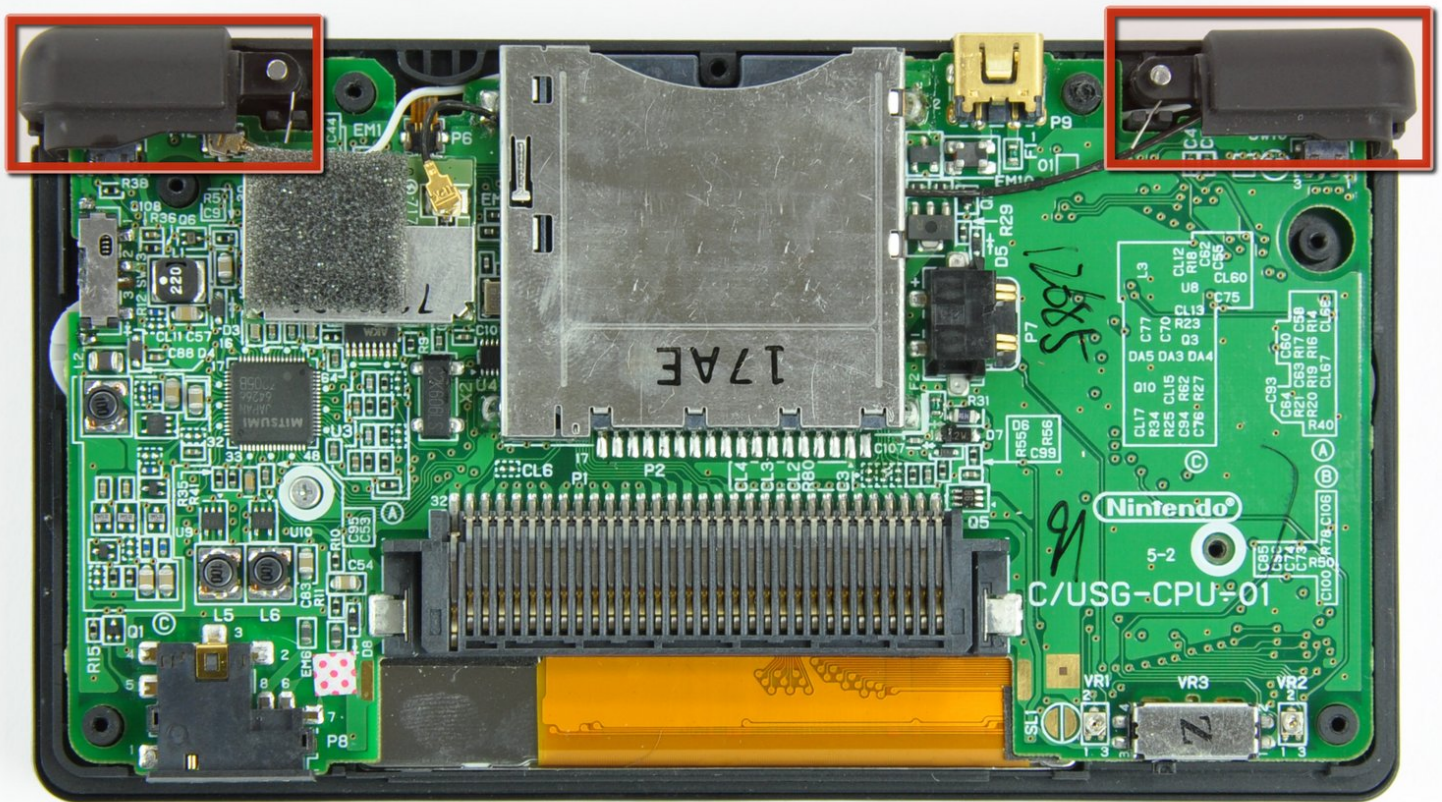




Nintendo DS Lite Trigger Buttons Replacement

Replacement of the Nintendo DS Lite trigger buttons.

Written By: Matthew Newsom



INTRODUCTION

Replace the trigger buttons on your Nintendo DS Lite and get back in the game!

TOOLS:

- [Phillips #00 Screwdriver](#) (1)
 - [Spudger](#) (1)
 - [Tri-point Y1 Screwdriver](#) (1)
-

Step 1 — Battery



- Unscrew the Phillips screw securing the battery cover to the lower case.
- ⓘ The screw remains captive to the battery cover.
- Pry the battery cover upward with a spudger or fingernail, and lift out of the lower case.

Step 2



- Wedge the edge of a spudger in between the side of the battery and the lower case housing and pry upward to dislodge the battery.
- Remove the battery from the DS Lite.

Step 3 — Lower Case



- Use the tip of a spudger to pry both rubber feet off the DS Lite.

Step 4



- Remove the following screws securing the lower case to the body of the DS Lite:
 - Two 4.3 mm gold Phillips screws
 - One 3.9 mm black Tri-Wing screw
 - One 3.3 mm silver Phillips screw
 - Three 5.5 mm silver Tri-Wing screws

Step 5




 Remove the cover from the Game Pak slot before continuing.


- Insert the edge of a spudger in between the lower and upper case near the top right corner of the DS Lite.
- Carefully run the spudger along the right edge of the DS Lite, creating an opening in the process.
- Continue running the spudger along the backside of the DS Lite until the majority of the lower case has been separated from the upper case.

Step 6

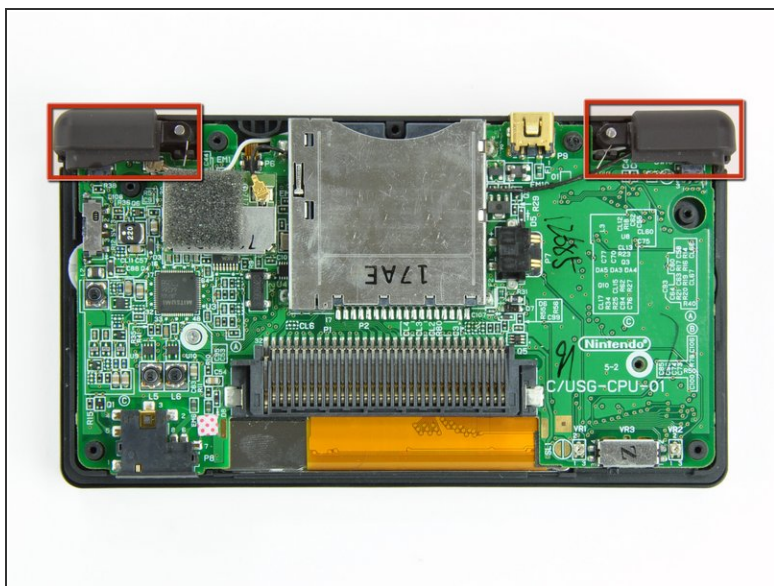


- Lift the lower case away from the rest of the DS Lite.

 Pull carefully. Some units are sealed with adhesive, and pulling too hard can damage the power switch.

 When re-assembling, make sure that power switch and volume sliders are properly aligned with the switches on the motherboard.

Step 7 — Trigger Buttons



- Lift both trigger buttons out of the DS Lite.
- ✦ The trigger buttons are held in very loosely by small metal pegs and springs. Don't lose track of these pieces.
- ⓘ The second picture shows the correct configuration of the trigger assembly for reassembly purposes.

To reassemble your device, follow these instructions in reverse order.