



Palm TX Back Panel Replacement

How to remove the back panel of the Palm T|X.

Written By: Spencer Lewson



INTRODUCTION

Removing the back panel allows you to access the various parts of the Palm T|X PDA.



TOOLS:

- [iFixit Opening Tools](#) (1)
 - [T5 Torx Screwdriver](#) (1)
-

Step 1 — Back Panel



- Orient the device so that the display faces forward.
- Remove the stylus from the right side.

Step 2



- Turn over the device so that the back panel faces forward.
- Use a T5 Torx screwdriver to remove the four 6.35mm corner screws.

Step 3



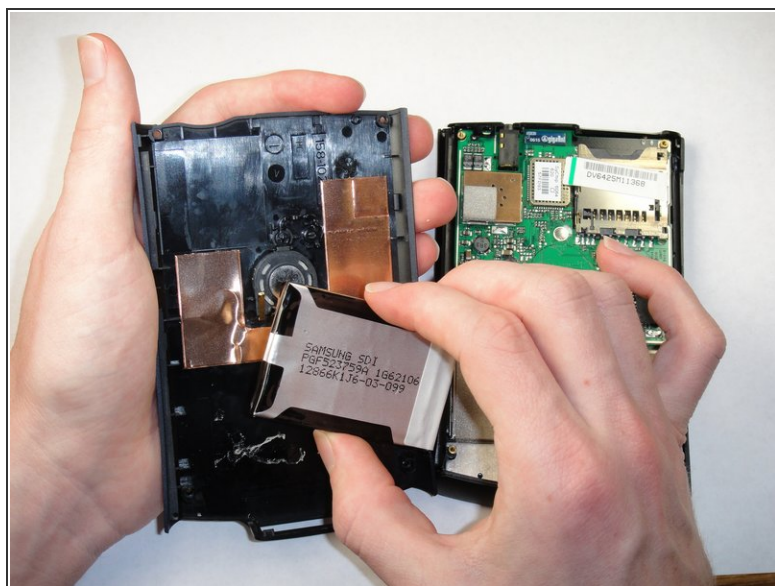
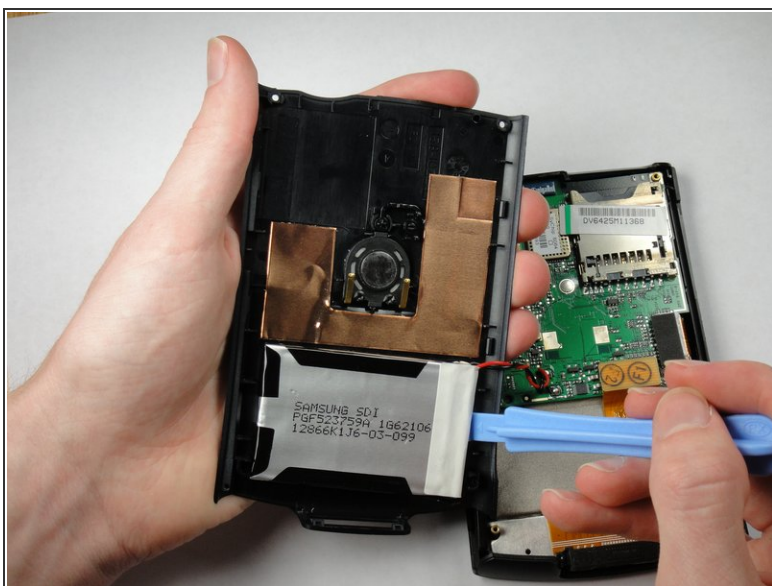
- Rotate the device so that the display faces forward.
- Insert a plastic opening tool with the angled tip pointing downward into the crevice on the left side of the device.
- Pry along the crevice to loosen the back panel.
- Repeat this process for the right side.

Step 4



- Carefully pry the back panel to open the device.
- ⚠ Be careful not to break the wire that connects the battery pack to the motherboard.
- ℹ When reassembling, snap the back panel back into place and then insert the top cover.

Step 5



- Use a plastic opening tool to peel the battery pack from the back panel.
- ⓘ The battery pack is glued to the back panel so removing it may require considerable effort.

To reassemble your device, follow these instructions in reverse order.