



Palm TX Front Panel Replacement

Removing the front panel from a Palm T|X.

Written By: Jake Shiraki



INTRODUCTION

This guide will walk you through the steps to remove and replace the front panel on a Palm T|X.

TOOLS:

- [iFixit Opening Tools](#) (1)
 - [Soldering Workstation](#) (1)
 - [T5 Torx Screwdriver](#) (1)
-

Step 1 — Back Panel



- Orient the device so that the display faces forward.
- Remove the stylus from the right side.

Step 2



- Turn over the device so that the back panel faces forward.
- Use a T5 Torx screwdriver to remove the four 6.35mm corner screws.

Step 3



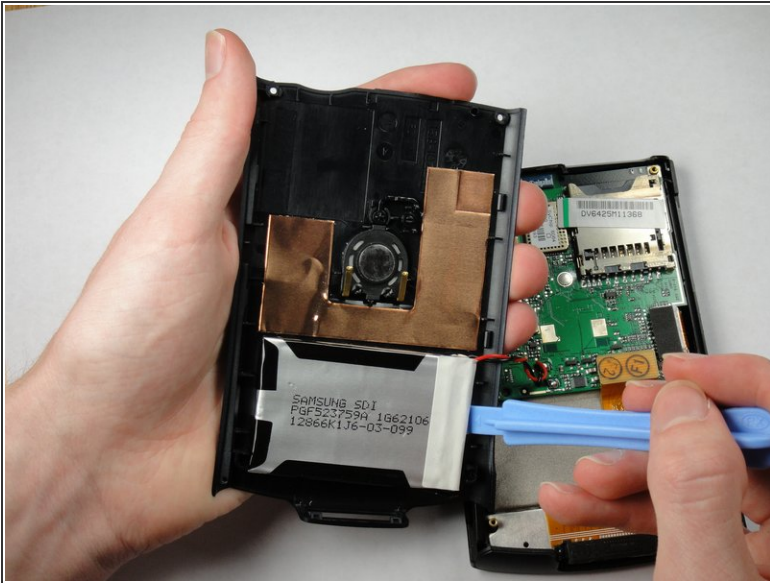
- Rotate the device so that the display faces forward.
- Insert a plastic opening tool with the angled tip pointing downward into the crevice on the left side of the device.
- Pry along the crevice to loosen the back panel.
- Repeat this process for the right side.

Step 4



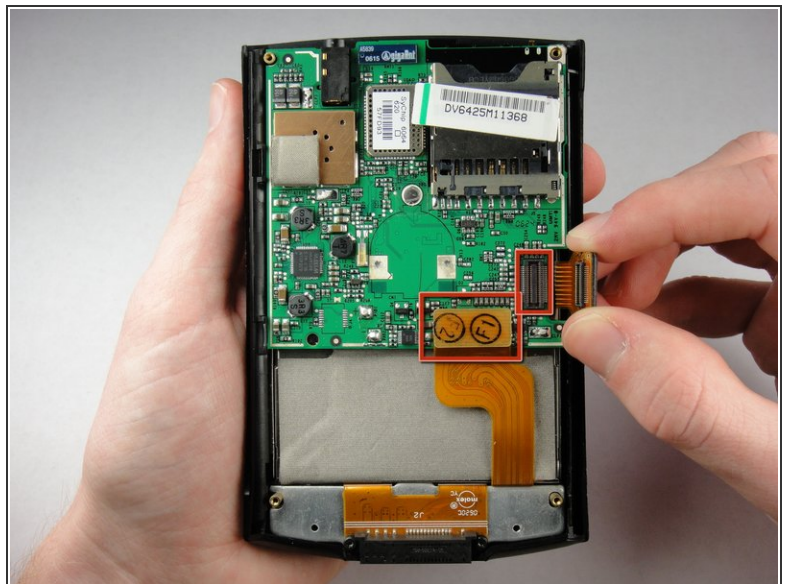
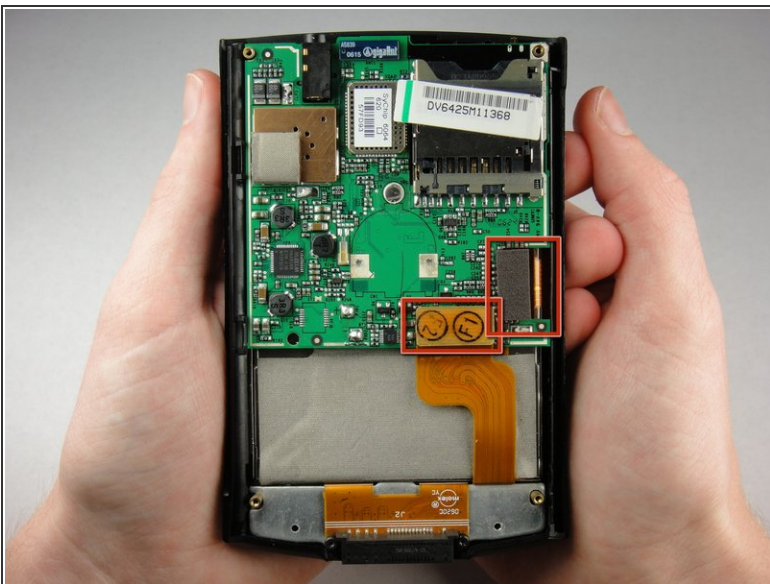
- Carefully pry the back panel to open the device.
- ⚠ Be careful not to break the wire that connects the battery pack to the motherboard.
- ℹ When reassembling, snap the back panel back into place and then insert the top cover.

Step 5



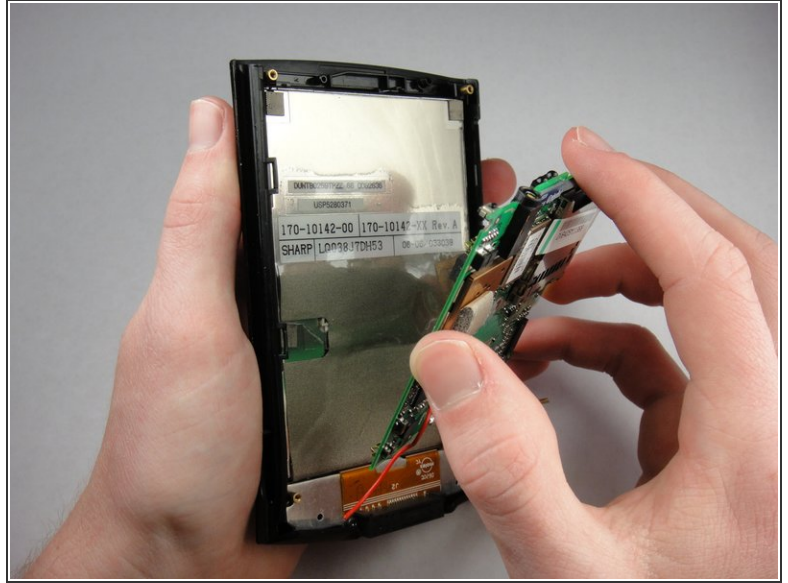
- Use a plastic opening tool to peel the battery pack from the back panel.
- ⓘ The battery pack is glued to the back panel so removing it may require considerable effort.

Step 6 — Motherboard



- Pull straight up on the ribbon cables located on the bottom right of the motherboard to disconnect them.

Step 7



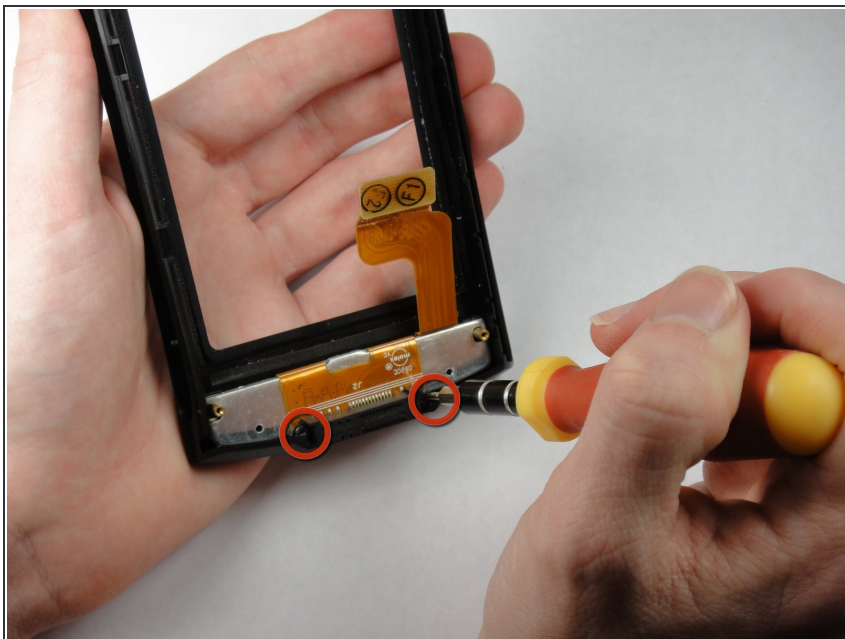
- Lift the mother board out of the device.
- ⓘ A weak adhesive attaches the motherboard to the device.
- ⓘ The red wire in the picture will not be attached to your device at this point.

Step 8 — Display



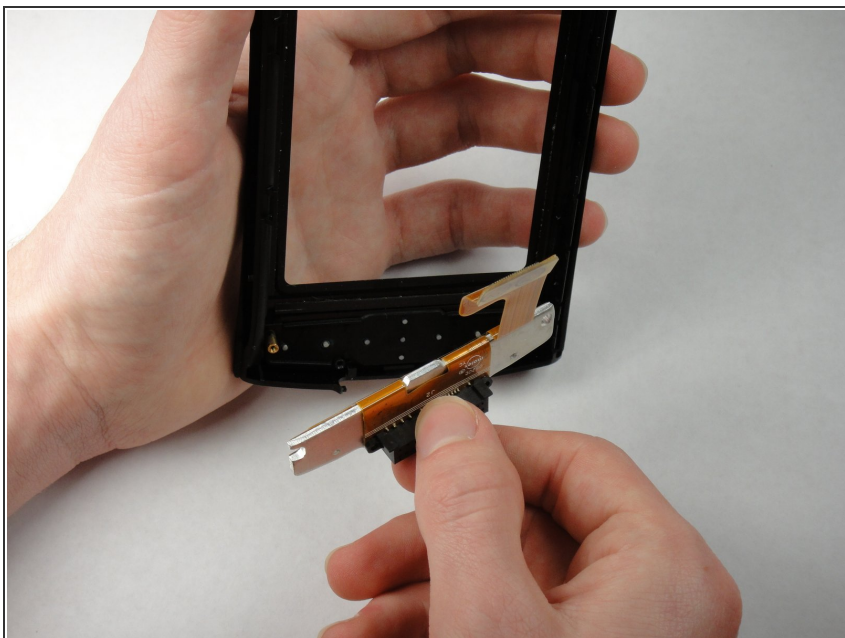
- Orient the device sideways, as shown in the picture.
- Lightly push the front of the display to separate it from the front panel.
- ⓘ The battery in the picture will not be attached to the device at this point.

Step 9 — Buttons and Connector Assembly



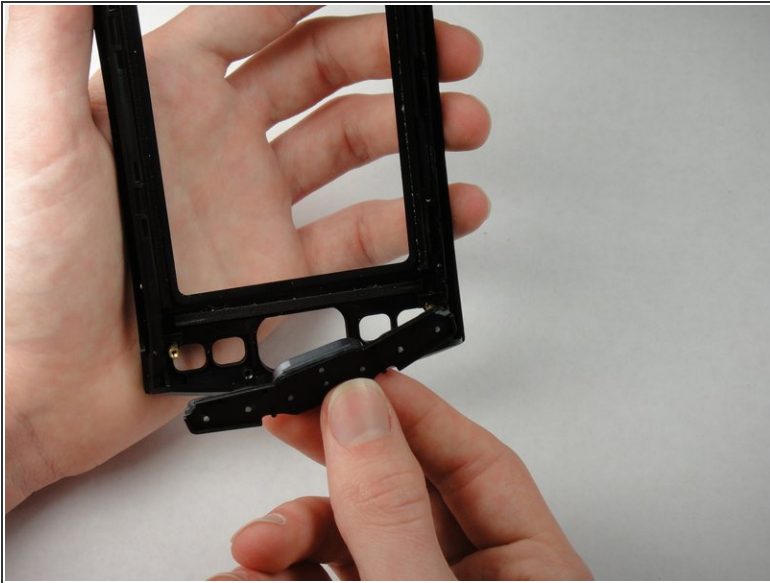
- Use a T5 Torx screwdriver to remove the 7.75mm screws at the bottom of the device.
- ⓘ It may take some manipulation to remove the screws.

Step 10



- Lift the button and connector assembly from the front panel.

Step 11 — Front Panel



- Lift the rubber buttons off the front panel.

To reassemble your device, follow these instructions in reverse order.