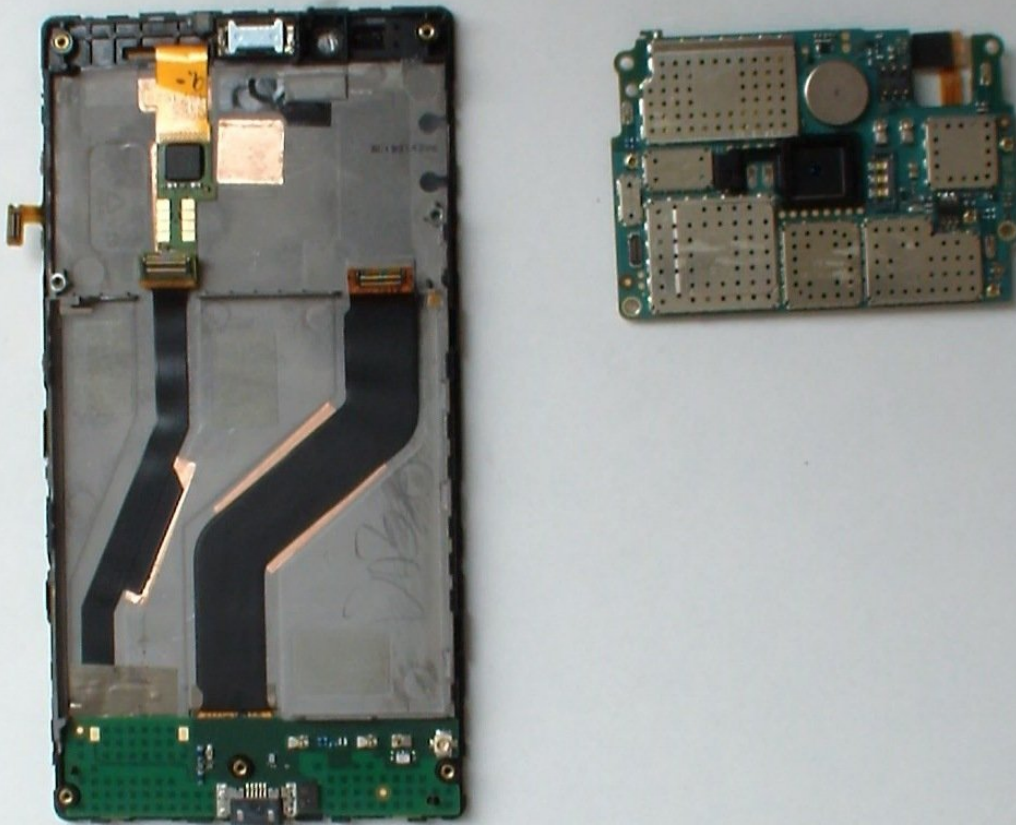




Nokia Lumia 720 Logic Board Replacement

Nokia Lumia 720 Logic Board Replacement

Written By: ZFix



INTRODUCTION

Nokia Lumia 720 - How to disassemble the phone and remove the Logic Board.

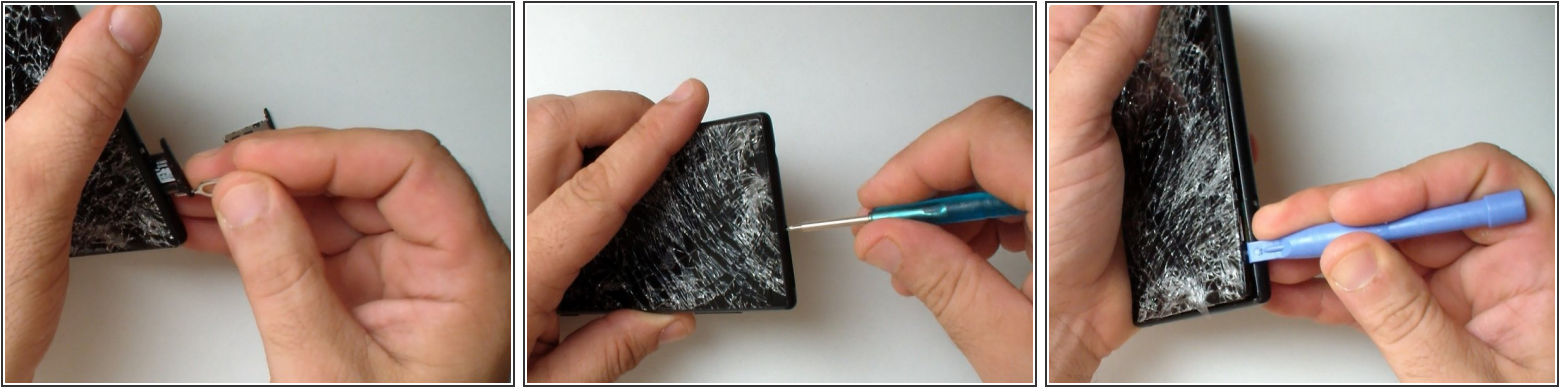
[video: https://www.youtube.com/watch?v=wseNxvPm_po]



TOOLS:

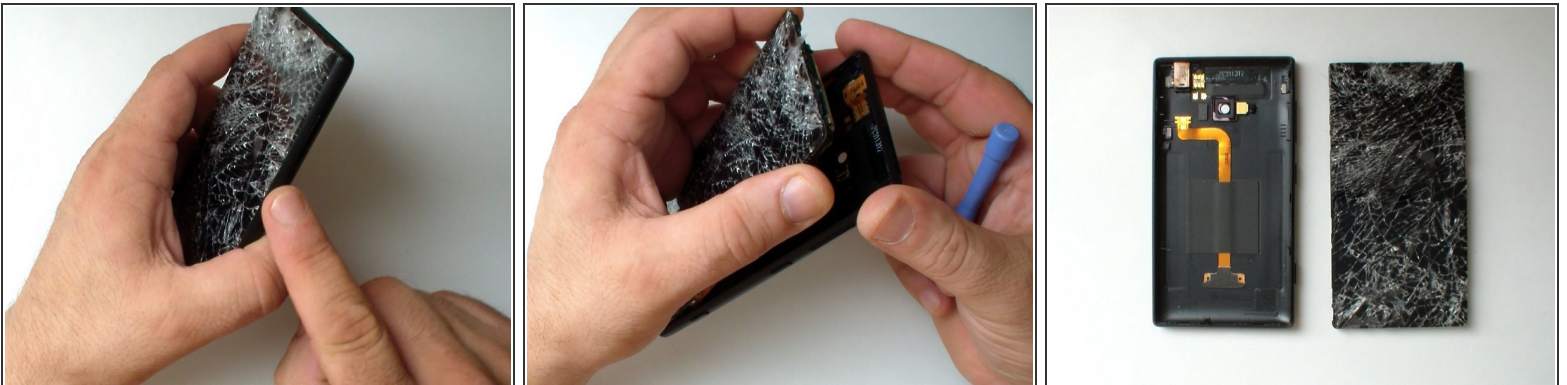
- [iFixit Opening Tools](#) (1)
 - [Spudger](#) (1)
 - [T2 Torx Screwdriver](#) (1)
 - [T4 Torx Screwdriver](#) (1)
 - [Tweezers](#) (1)
-

Step 1 — BATTERY COVER - PART 1



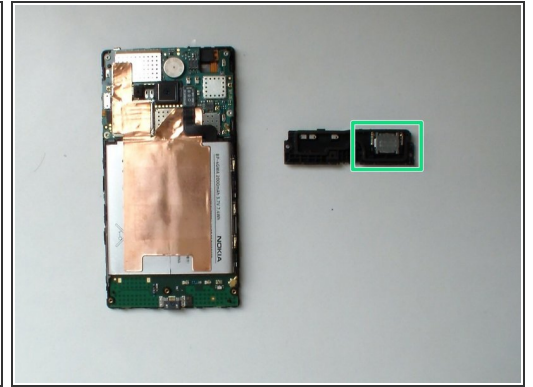
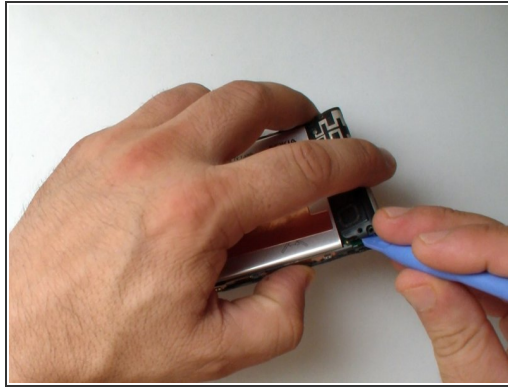
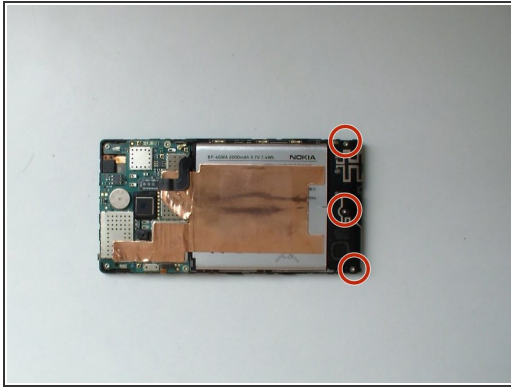
- Remove the SIM card tray and the memory card try.
- Use a screwdriver Torx T2 and remove the screw under the SIM card tray.
- Use plastic tools and start the separating the back cover from the top side.

Step 2 — BATTERY COVER - PART 2



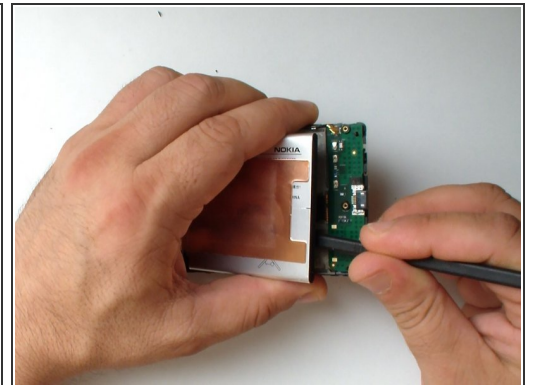
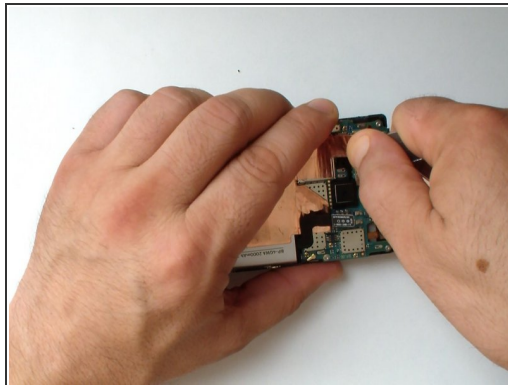
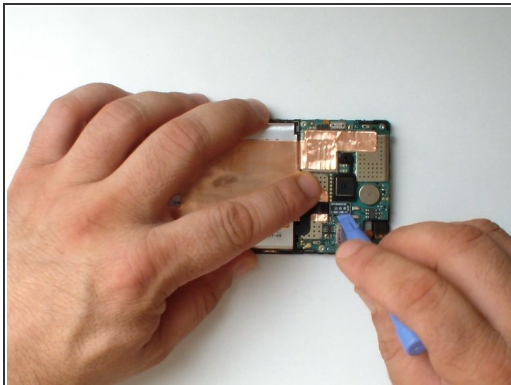
Be careful with the volume buttons.

Step 3 — Loudspeaker & Antenna module



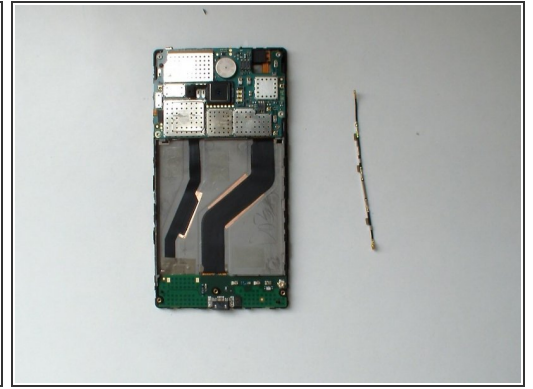
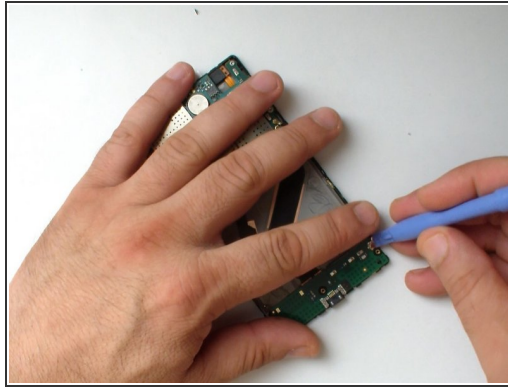
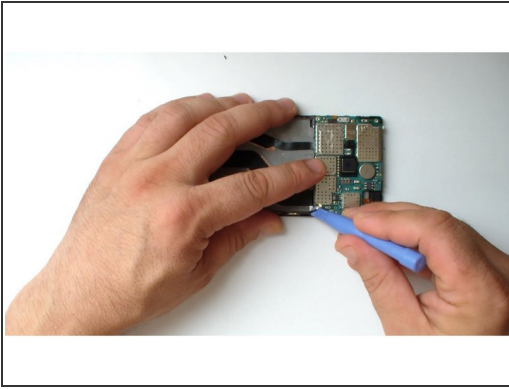
- Remove the 3x Torx T4 screws.
- Buzzer / Loudspeaker

Step 4 — BATTERY



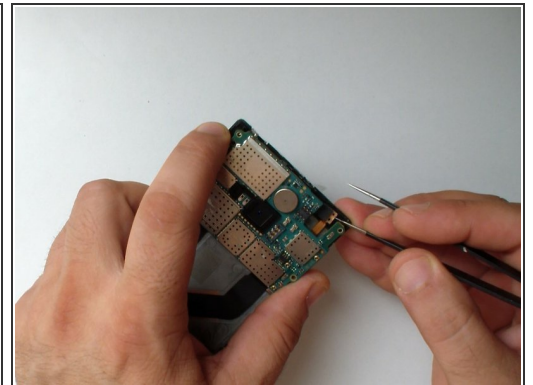
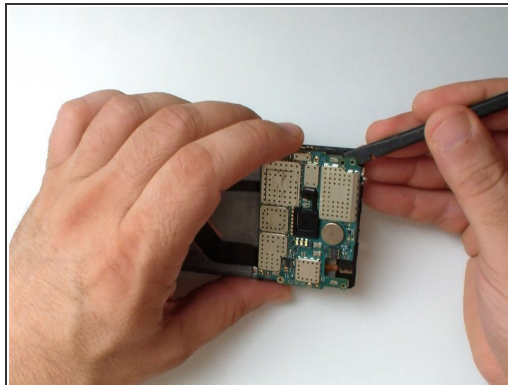
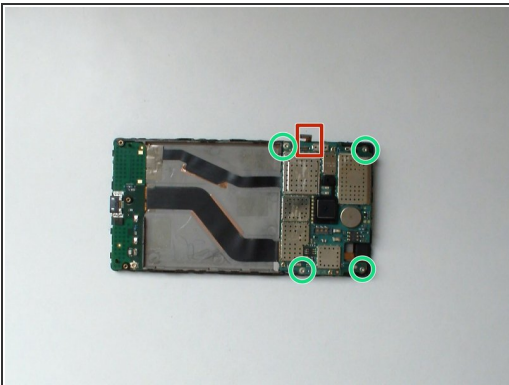
- Disconnect the battery flex cable.
- Unstick the metal foil from the logic board.
- Use a plastic tool with a thin tip and unstuck the battery from the middle frame.
- Battery - **BP-4GWA**, 2000mAh, 3.7V, 7.4Vh

Step 5 — COAXIAL ANTENNA CABLE



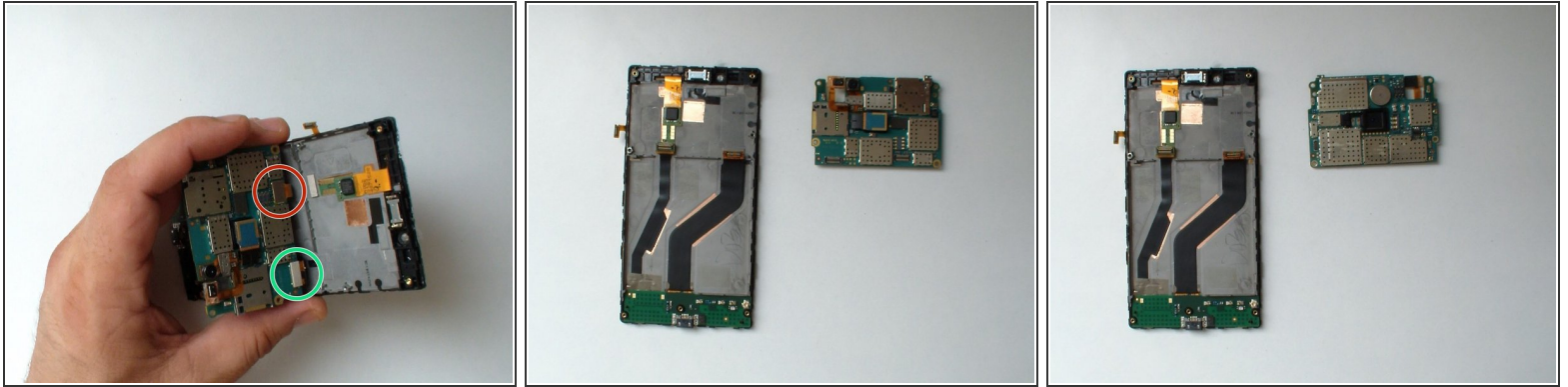
- Disconnect the Antenna cable from the Logic board and from the Charging Dock board and remove it.

Step 6 — Logic Board



- Disconnect the Volume, Power and camera buttons flex cable.
- Remove the 4x Torx T4 screws.
- Slightly lift the board
- ⚠ Slowly and gently unstuck the light sensor from the middle frame.

Step 7



- Disconnect the Display Assembly flex cable.
- Disconnect the Charging Dock Board flex cable.
- Remove the Main board.

To reassemble your device, follow these instructions in reverse order.