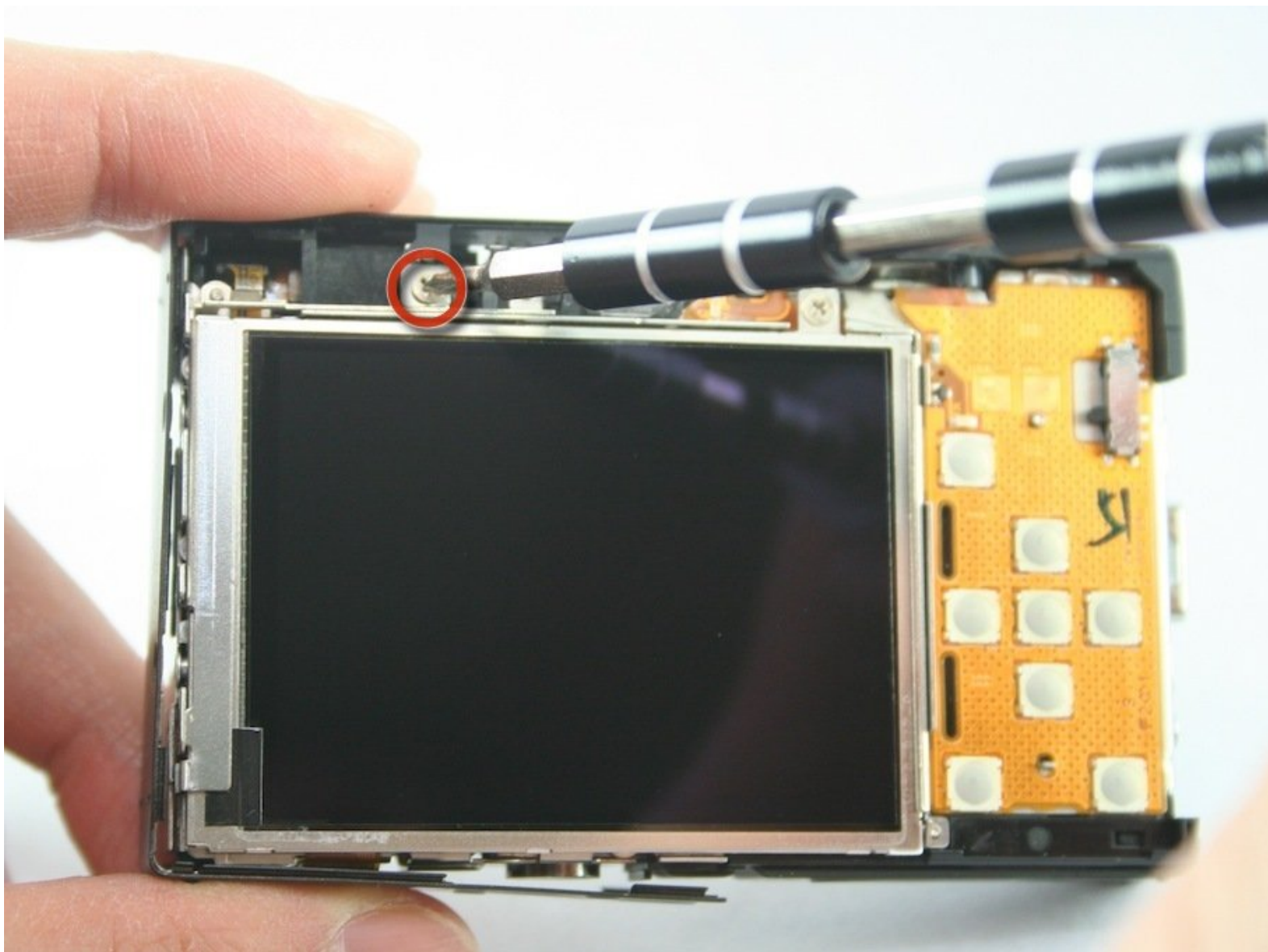




Disassembling Canon PowerShot SD1100 IS LCD screen

This guide will allow one to remove or replace the LCD screen.

Written By: Tyler Grossheim



INTRODUCTION

Use this guide to remove the LCD screen.



TOOLS:

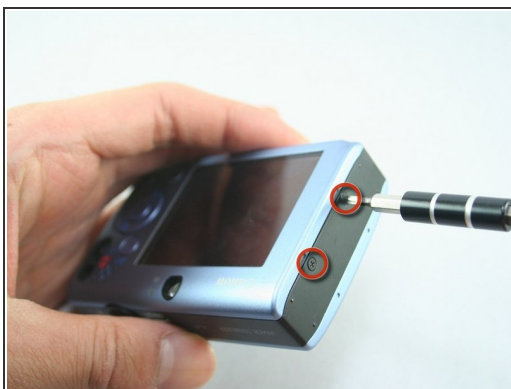
- [Phillips #00 Screwdriver](#) (1)
 - [Spudger](#) (1)
-

Step 1 — Front and Rear Cover



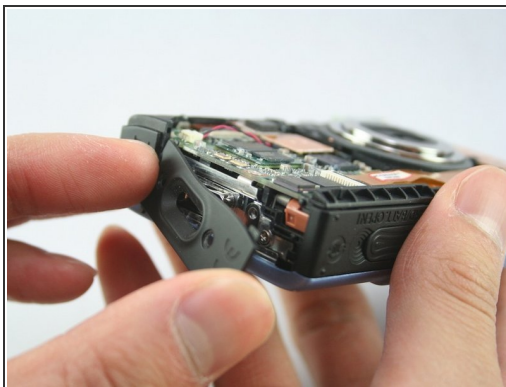
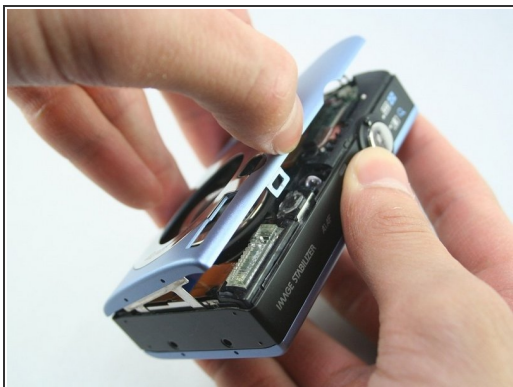
- Remove wrist strap and battery.

Step 2



- Remove 2 screws from each side of the camera (4 total, 0.102 in).
 - Remove 2 screws from the bottom on the camera (0.138 in).
- ⚠ Do not mix the 4 side screws with the 2 bottoms ones; they are different sizes.

Step 3



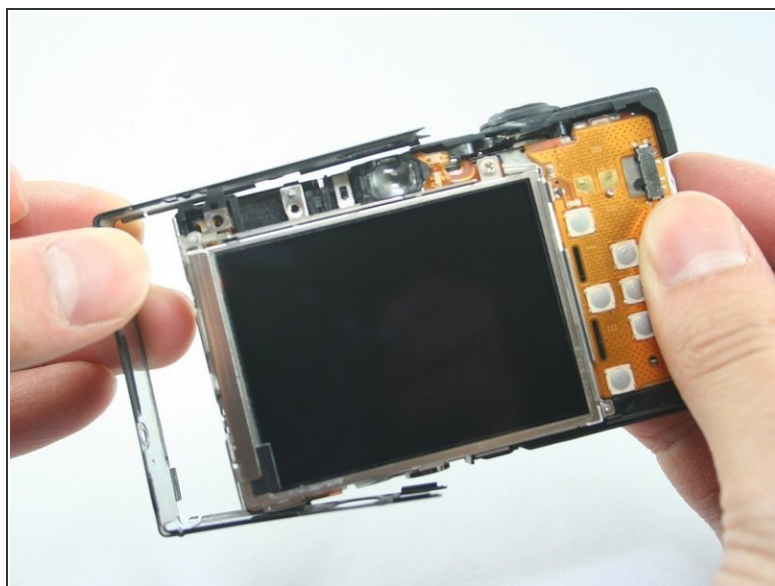
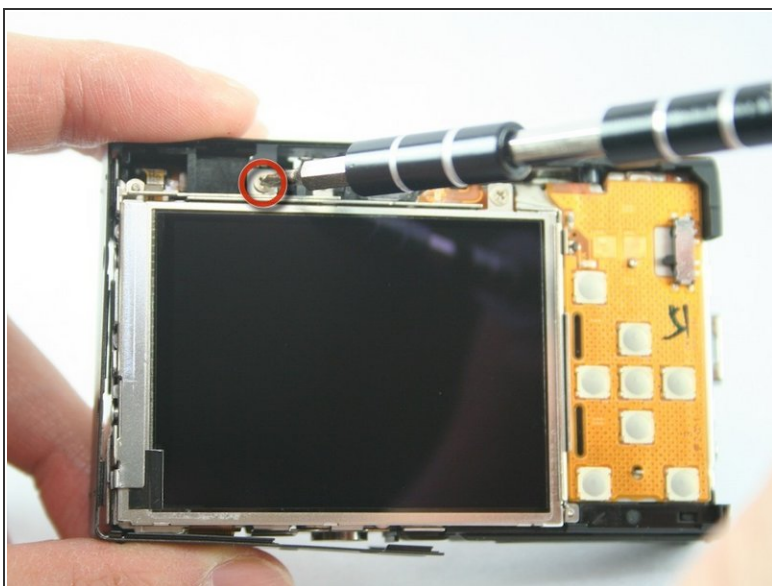
- Gently pull off the front cover.
- ⓘ The plate on the side should come off.
- Gently pull off the back cover.

Step 4



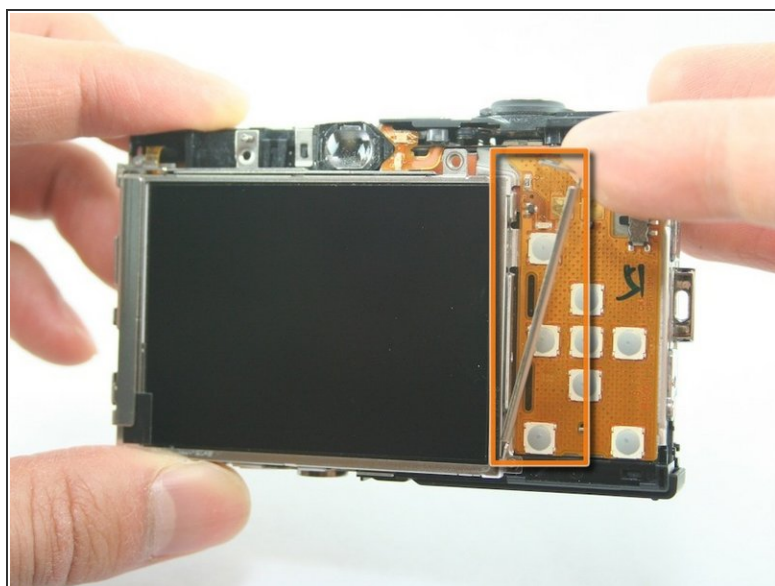
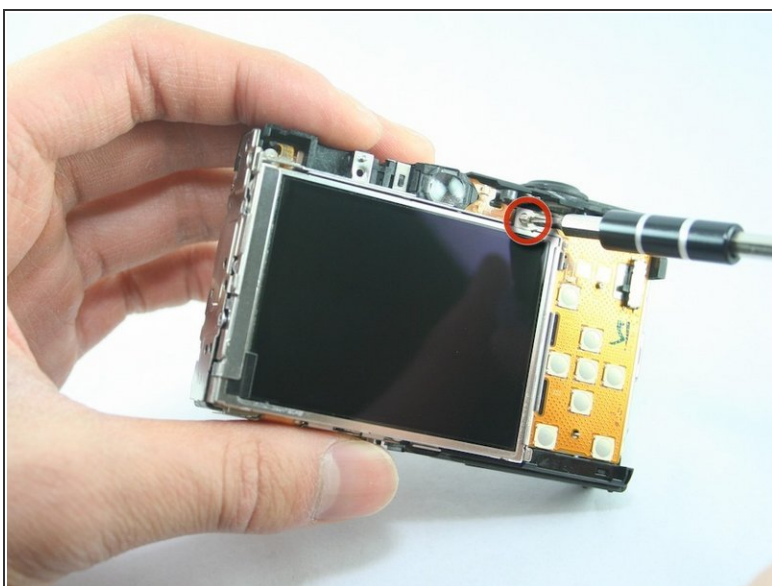
- The cases should now be removed.

Step 5 — LCD screen



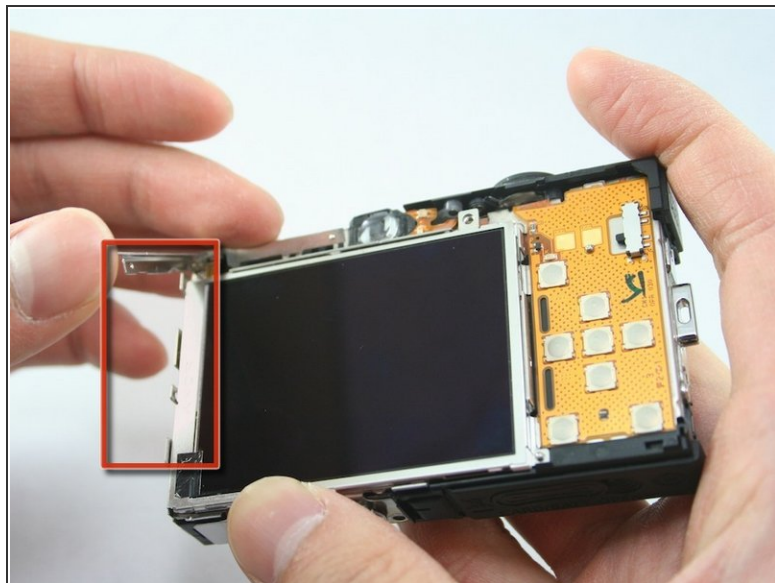
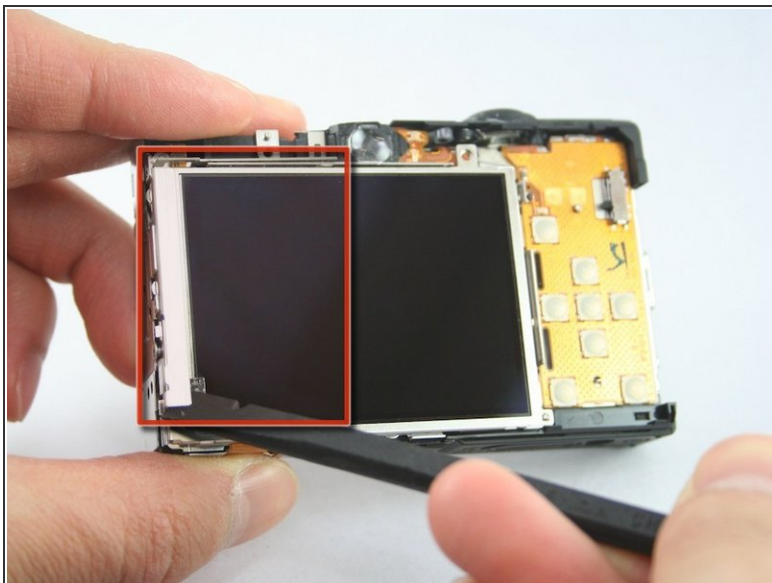
- Remove the top-left screw above the LCD screen (0.100 in).
- Remove the C-shaped plate from the side of the LCD screen.

Step 6



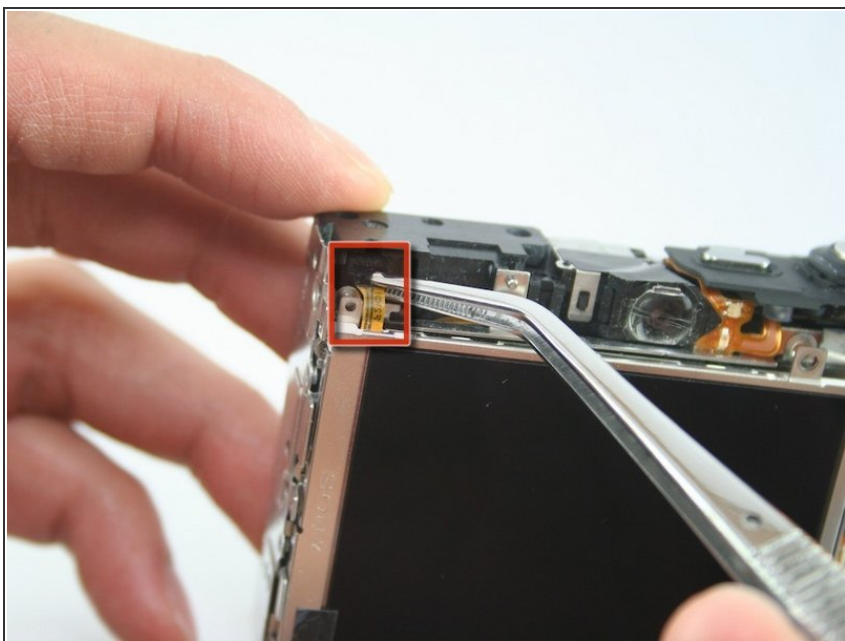
- Remove the screw from the top-right of the LCD screen (0.098 in).
- Remove the L-shaped bar from the right of the LCD screen.

Step 7



- Use the spudger to remove the L-shaped bar from the left-side of the LCD screen.

Step 8



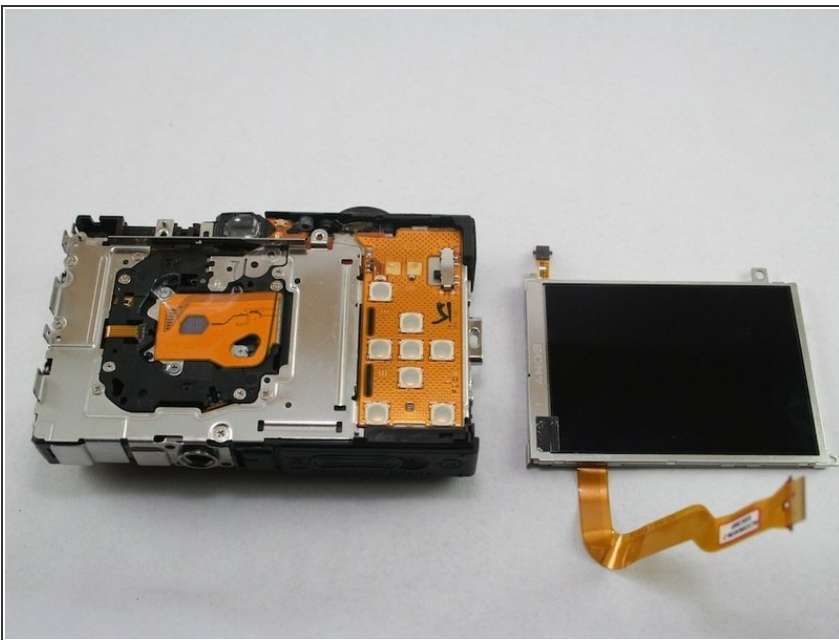
- Use tweezers to remove the connector ribbon from the top-left corner above the LCD screen.
- ⚠ Be gentle. This ribbon should stay attached to the screen.

Step 9



- Use a spudger to lift the connector lock (black flap) at the end of the larger LCD connector ribbon on the front side of the camera.
- Use the tweezers to lift this ribbon.
- Use the tweezers to gently peel this ribbon from the one underneath it.

Step 10



- The LCD screen should now be removed.

To reassemble your device, follow these instructions in reverse order.