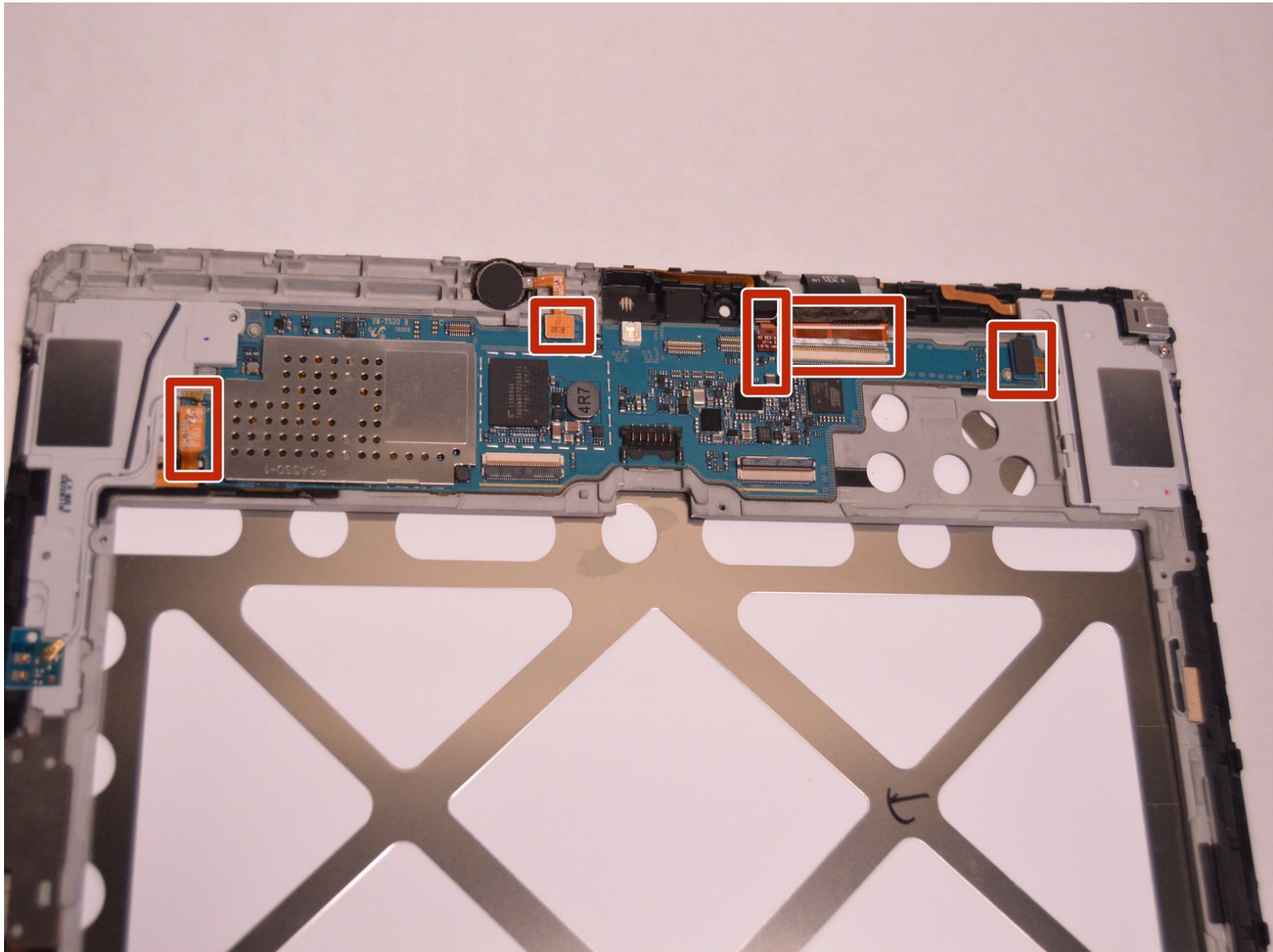




Samsung Galaxy Tab Pro 10.1 Motherboard Replacement

Replace the motherboard on the Samsung Galaxy Tab Pro 10.1.

Written By: Stephen Yeung



INTRODUCTION

This guide will show how to replace the motherboard on the Samsung Galaxy Tab Pro 10.1. The process will involve removing the rear panel, battery cables, and the battery. The front and rear cameras will also need to be removed to access the motherboard by itself. Then, the steps to remove the motherboard for replacement will be outlined.



TOOLS:

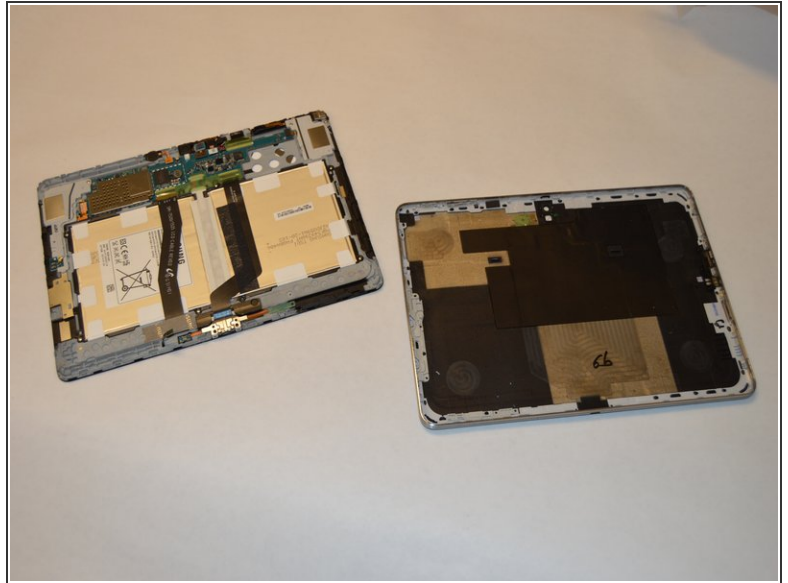
- [Metal Spudger Set](#) (1)
- [iFixit Opening Tools](#) (1)
- [iFixit Precision Bit Driver, Aluminum](#) (1)
- [Tweezers](#) (1)
- [Phillips #00 Screwdriver](#) (1)




PARTS:

- [Galaxy Tab Pro 10.1 \(Wi-Fi\) Motherboard](#) (1)
- [Galaxy Tab Pro 10.1 LCD Cable](#) (1)

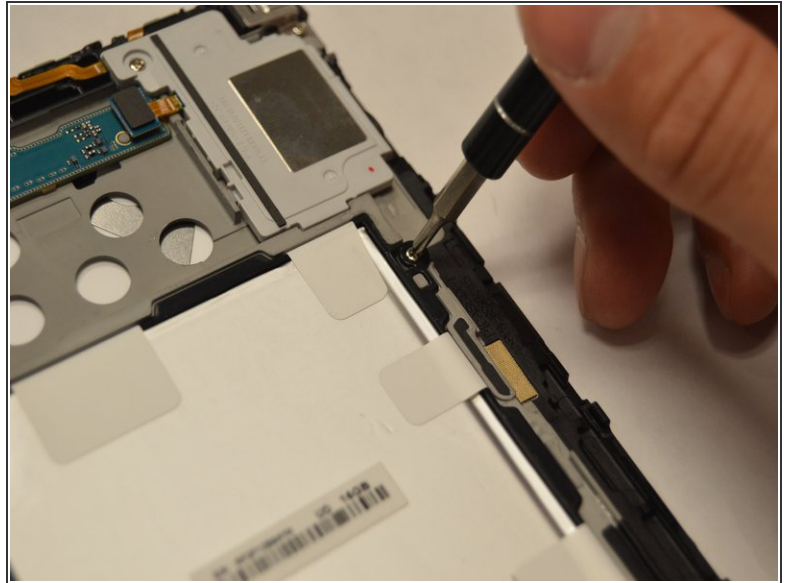
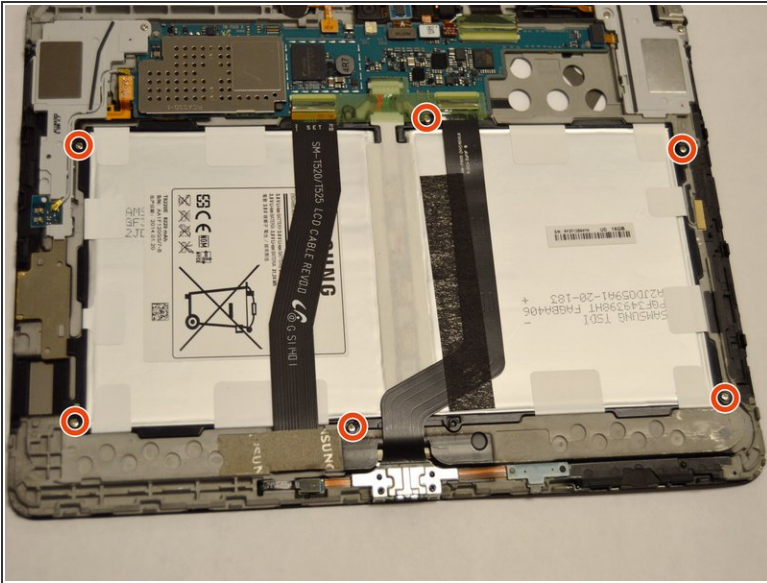
Step 1 — Rear Panel



 Be gentle, the front panel is connected to sensitive wiring that may snap if too much pressure is applied.

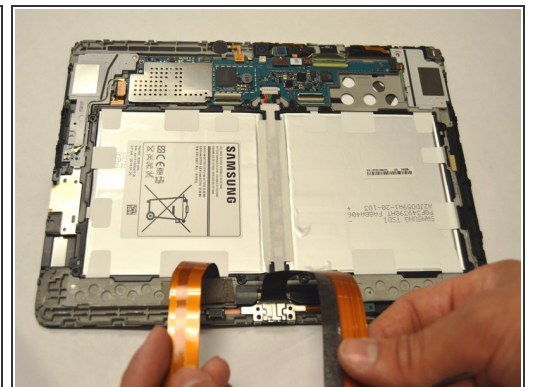
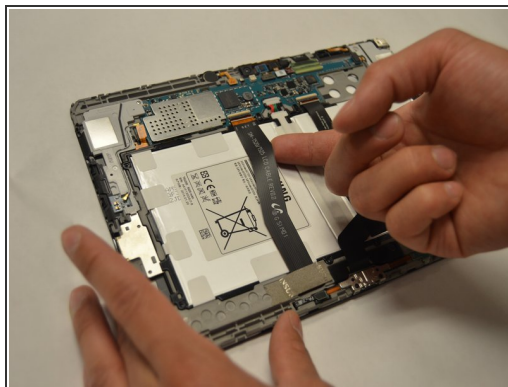
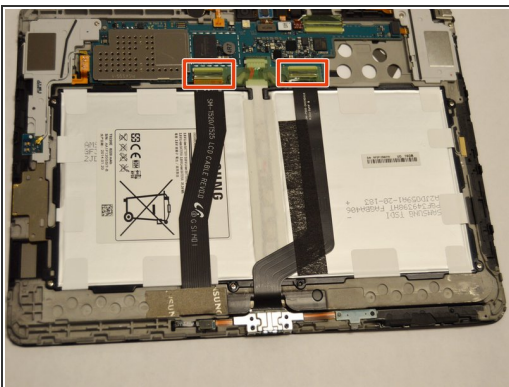
- Insert a plastic opening tool into the crevice between the screen and the side of the tablet.
- Go around the entire crevice with the plastic opening tool.
- Set aside the separated front and rear panels of the device.

Step 2 — Battery Cables



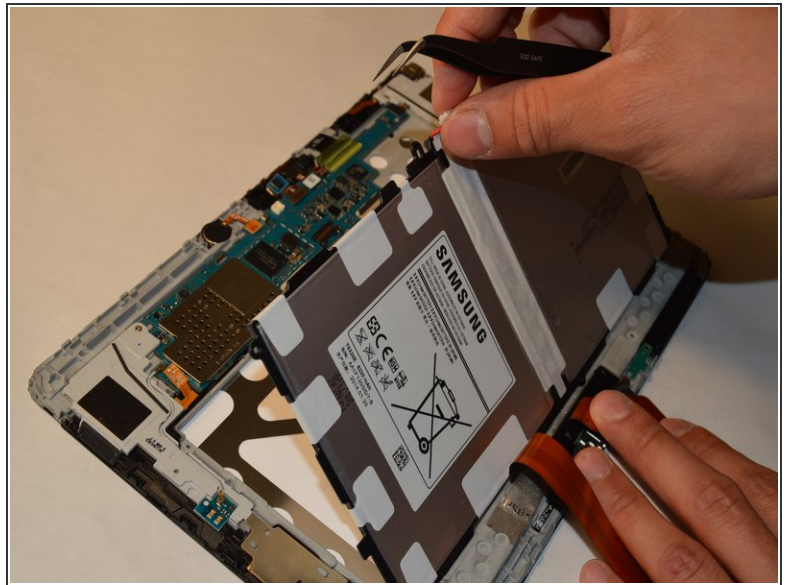
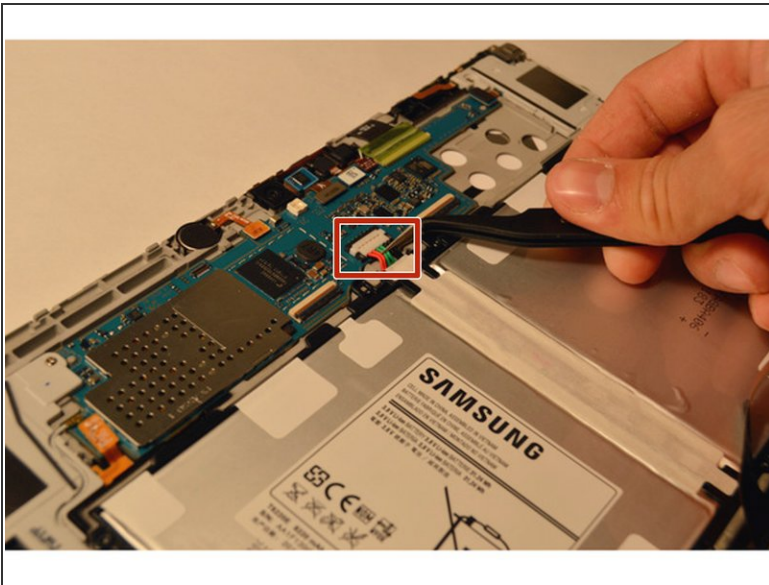
- Remove the six 4 mm Phillips #00 screws that hold the battery in place.

Step 3



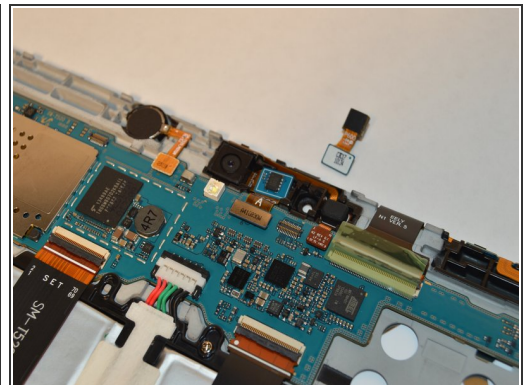
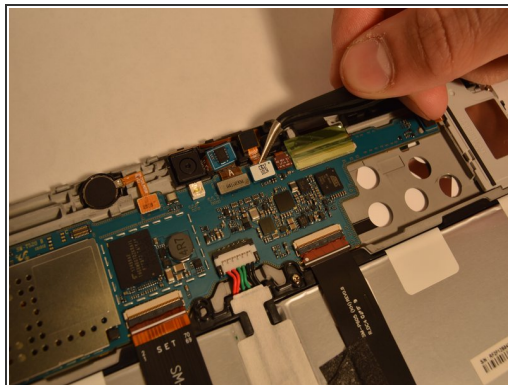
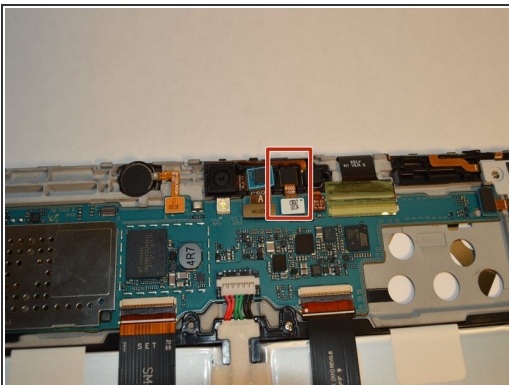
- Remove the tape that runs along the length of the battery.
- Lift the retaining flaps of the ZIF connectors on each side of the battery connector.
- Remove the two ribbon cables that lay across the width of the battery and are connected to the motherboard. Place your finger underneath the ribbon cable and gently lift the cable upwards and off.

Step 4



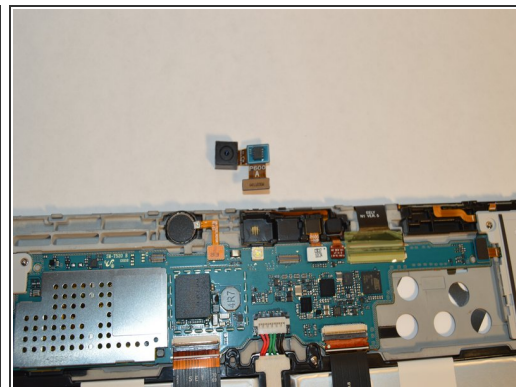
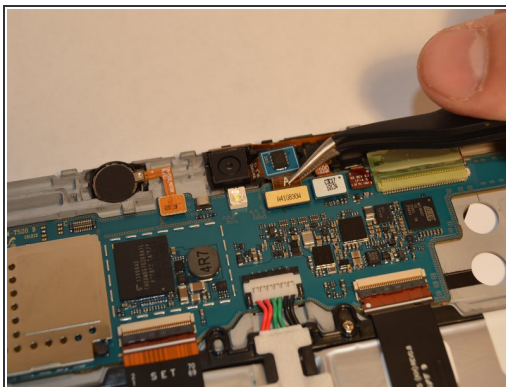
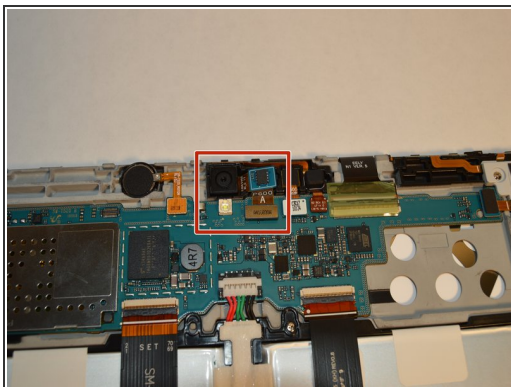
- Use a plastic tweezer and remove the top center 6 pin power connector that is attached to the edge of the motherboard.
- Detach the battery by gently lifting the battery out of the panel.

Step 5 — Front Facing Camera



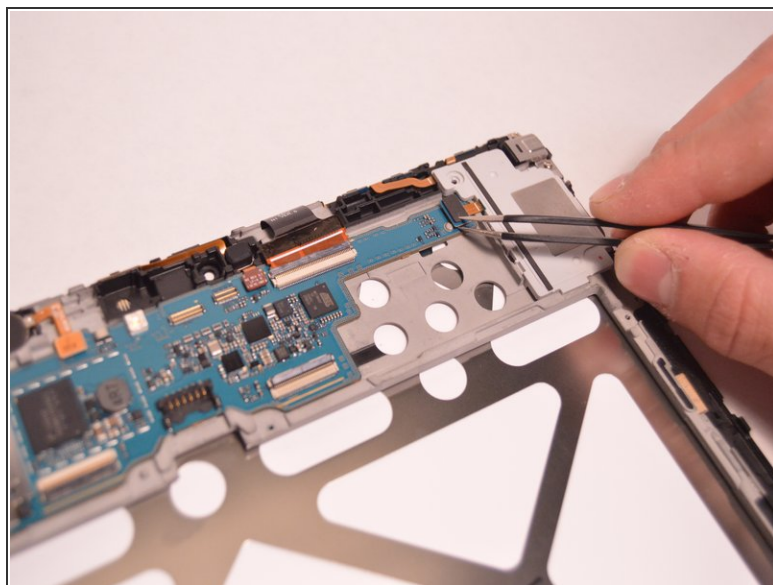
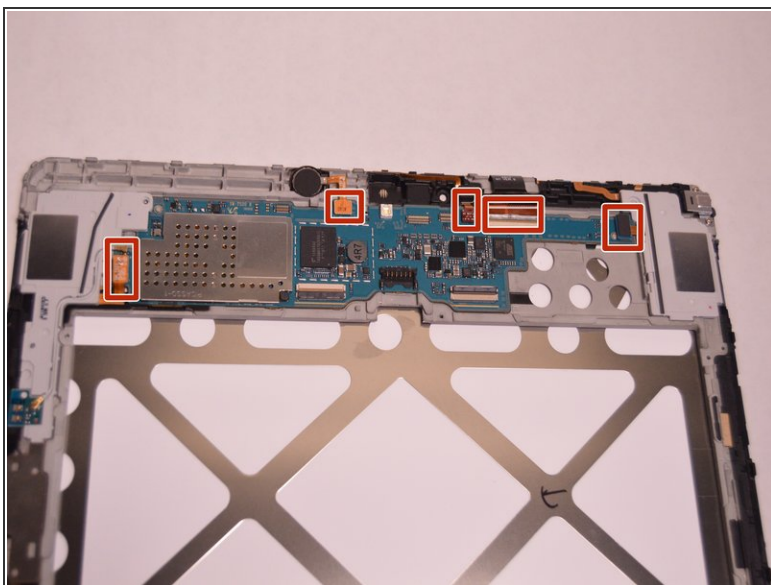
- Use plastic tweezers to carefully detach the front-facing camera from the motherboard.

Step 6 — Rear Facing Camera



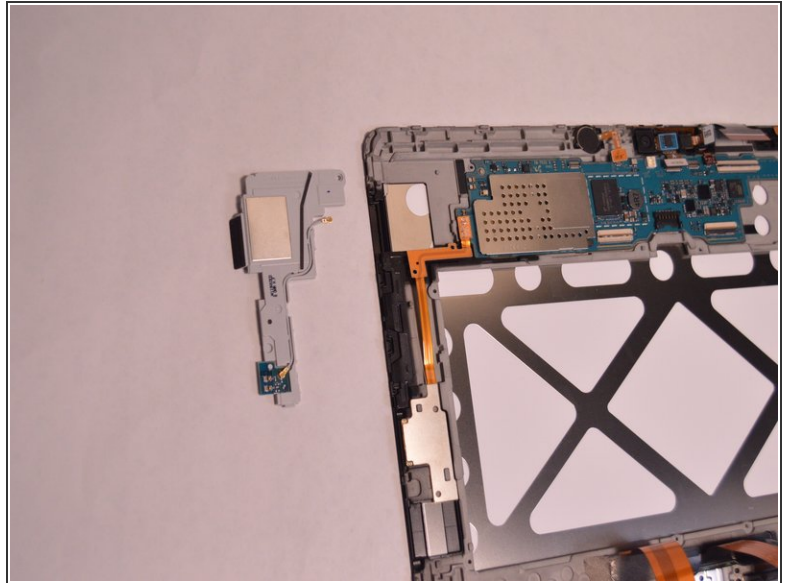
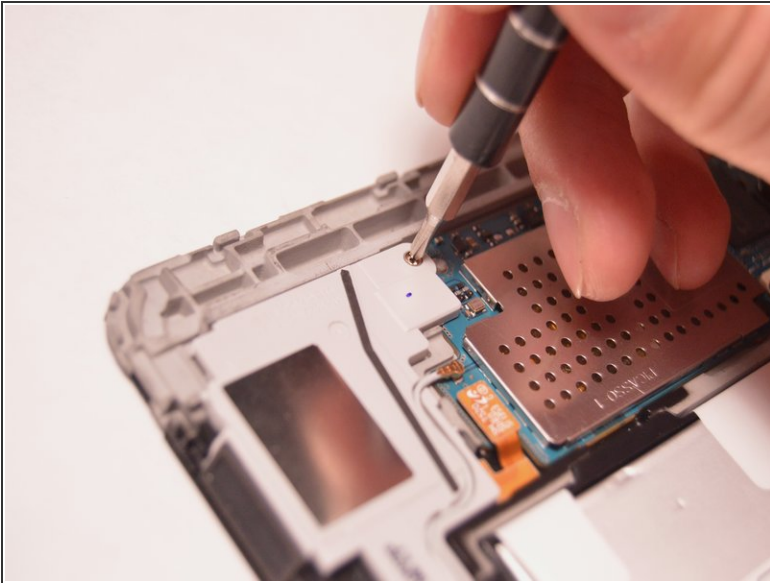
- Use plastic tweezers and carefully detach the rear-facing camera from the motherboard.

Step 7 — Motherboard



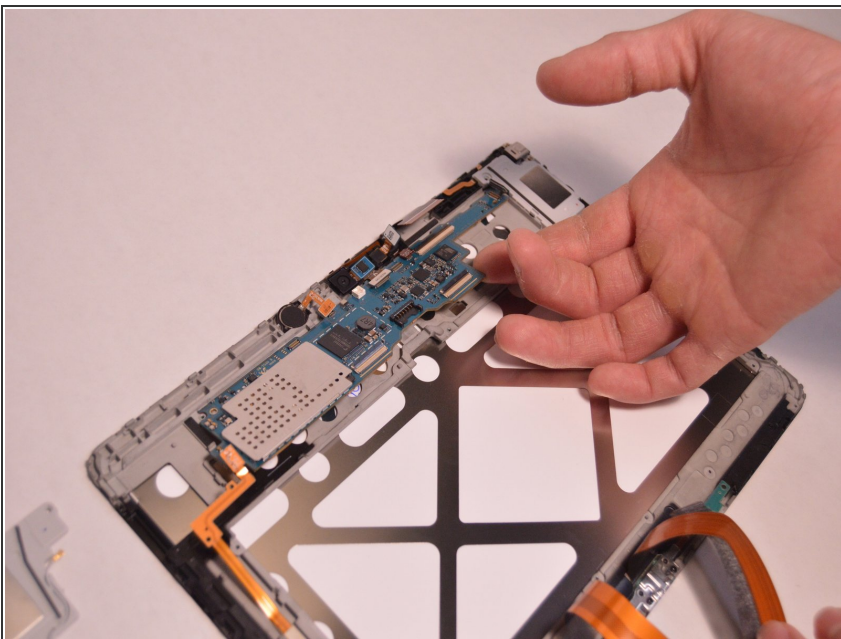
- Remove the five ribbon cables holding the motherboard together with a plastic tweezer.

Step 8



- Remove the Phillips #00 screws from the plastic part holding down the motherboard.

Step 9



- Gently lift the motherboard from the front panel enclosure.

To reassemble your device, follow these instructions in reverse order.