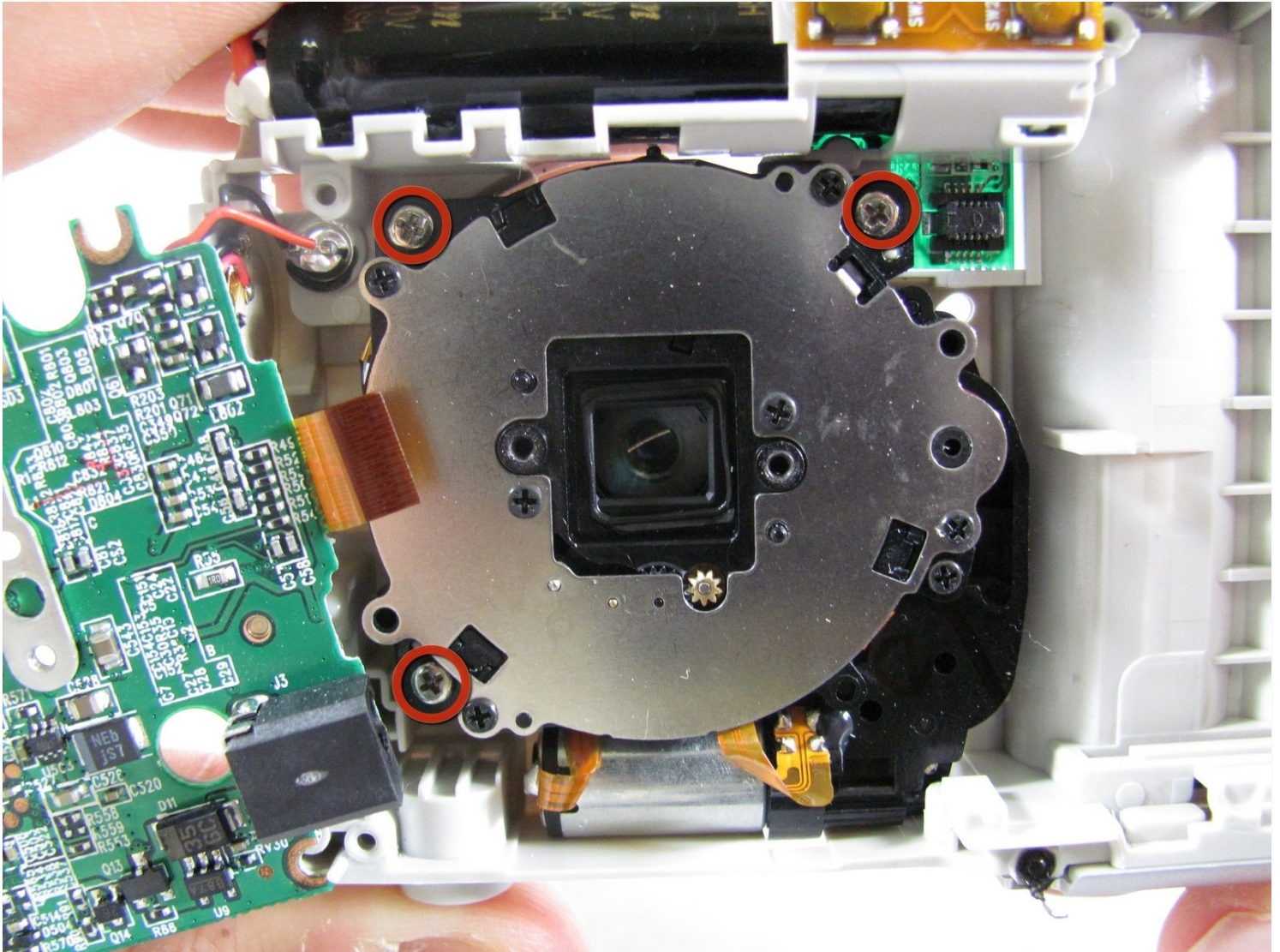




Olympus FE-210 Lens Assembly Replacement

You must remove the batteries, the front...

Written By: Matt



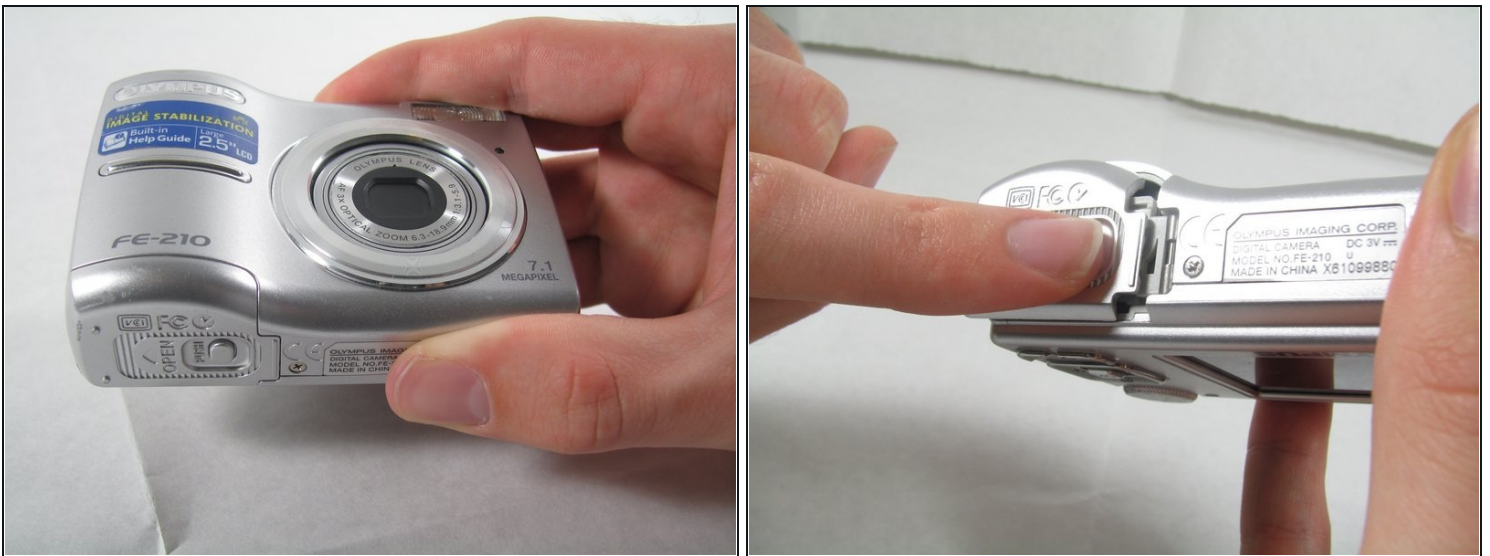
INTRODUCTION

You must remove the batteries, the front casing, the rear casing, and the motherboard before removing the lens assembly.

TOOLS:

Phillips #00 Screwdriver (1)

Step 1 — Battery



- The battery compartment is located on the bottom side of the camera. Push the button in, and slide the cover to get access to the batteries.

Step 2



- The batteries will slide right out.
- ☑ When putting new batteries in, make sure they are pointing the right direction.

Step 3 — Front Casing



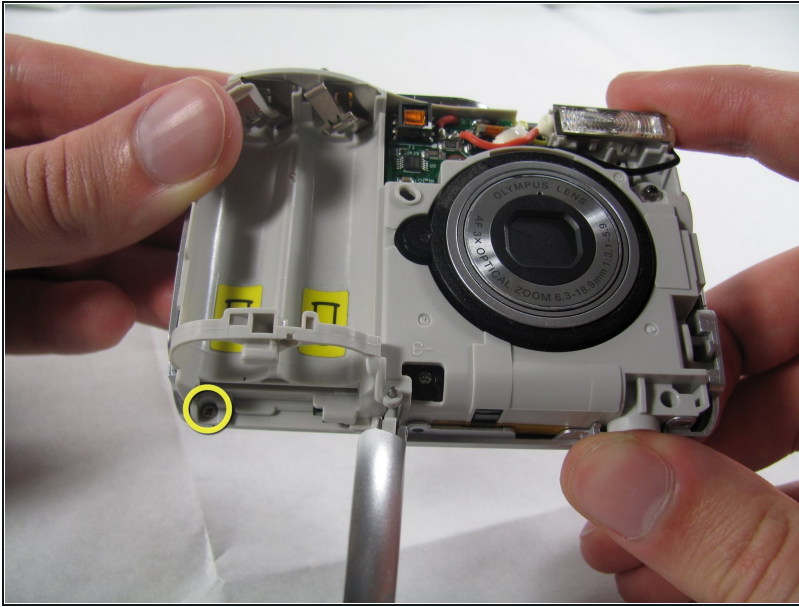
- Remove the 7 screws holding the front case in place, with a #00 screwdriver.
 - Six screws are 3.6 mm.
 - The seventh screw is 3.2 mm.

Step 4



- Pulling the front case off, requires applying enough strength in the right areas.
 - The front case snaps into place in three places:
 - At the top and bottom of the battery side (opposite of side pictured) of the case.
 - Right in the middle of the DC-in side (side pictured) of the case.
 - Top of the camera, to the left of the power button.
 - Once those places are disconnected, the front case will pop right off.
- ① The camera in the first two pictures is upside down. This is the best position to place your thumbs to remove the case.

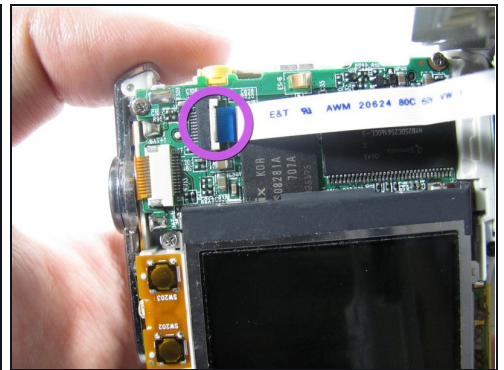
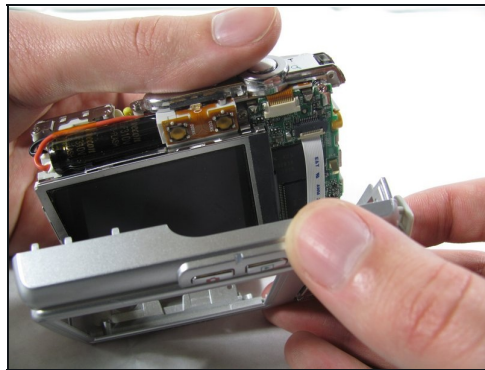
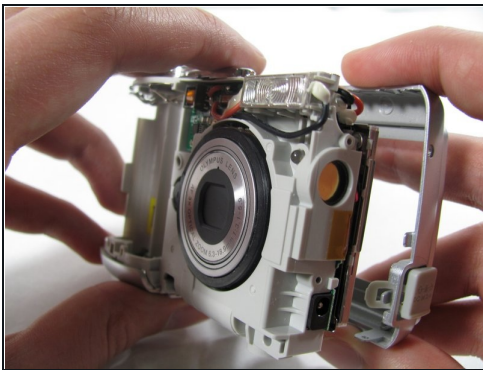
Step 5 — Rear Casing



- Remove the 3.2 mm screw in the battery compartment using a #00 screwdriver.

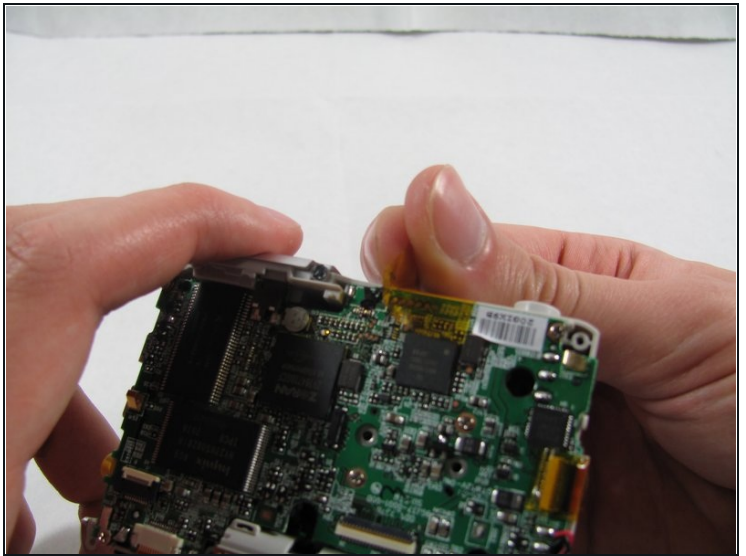
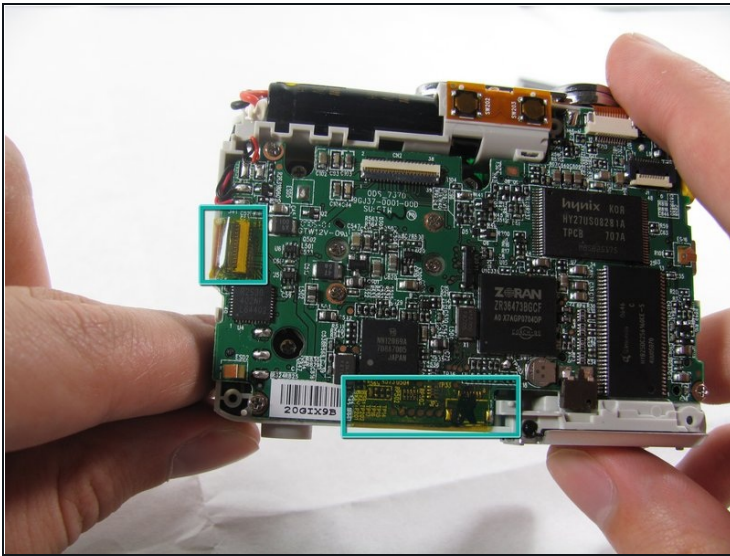
⚠ After removal of the screw the case will be loose, but do not tug it off. There is a cord connecting the rear controls to the motherboard.

Step 6



- Carefully pull the rear case away from the camera until you have access to the cord connected to the motherboard.
- Lift the white latch using a fingernail or a spudger.
- Pull the cord from its connector.

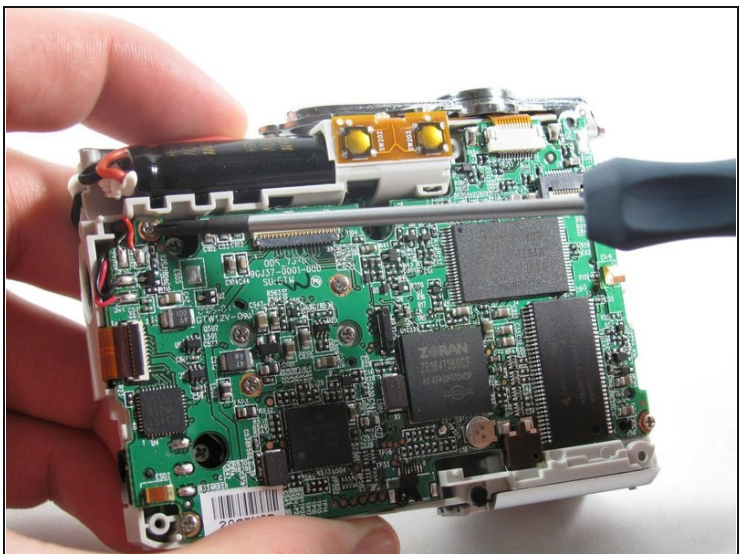
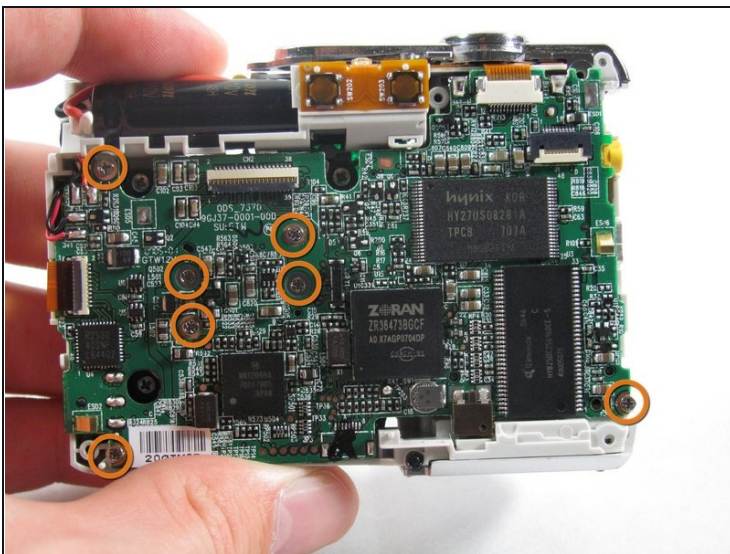
Step 7 — Motherboard



- Remove the 2 pieces of translucent yellow tape.

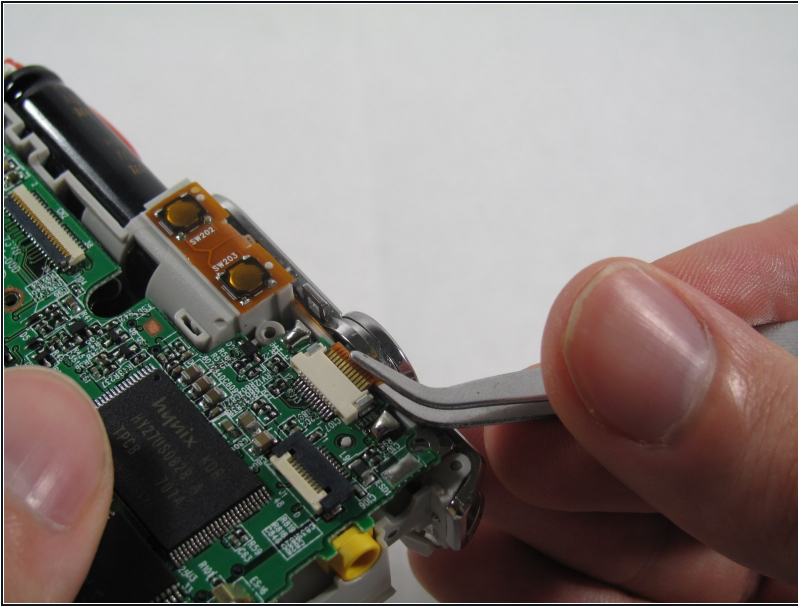
⚠ Removing these pieces of tape will void the camera warranty. They serve no functional purpose and do not need to be replaced during reassembly.

Step 8



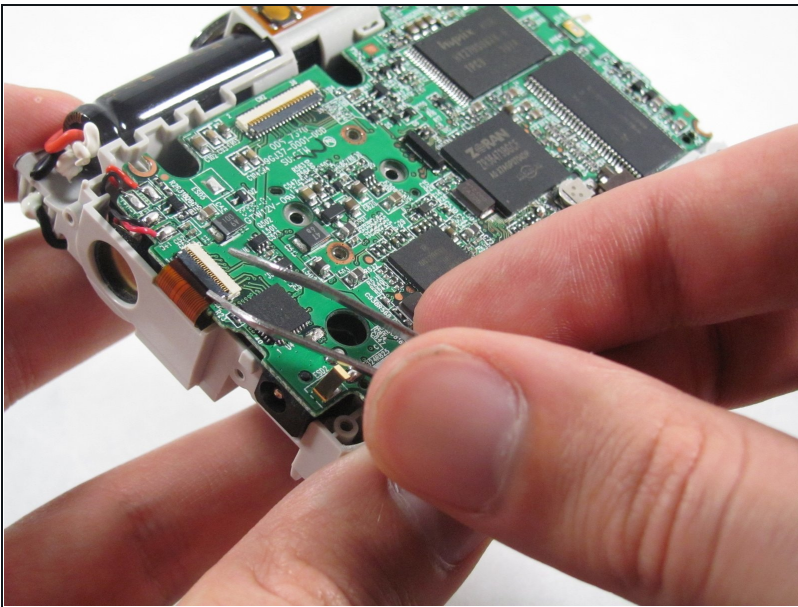
- Remove the seven 2.7 mm using a #00 screwdriver.

Step 9



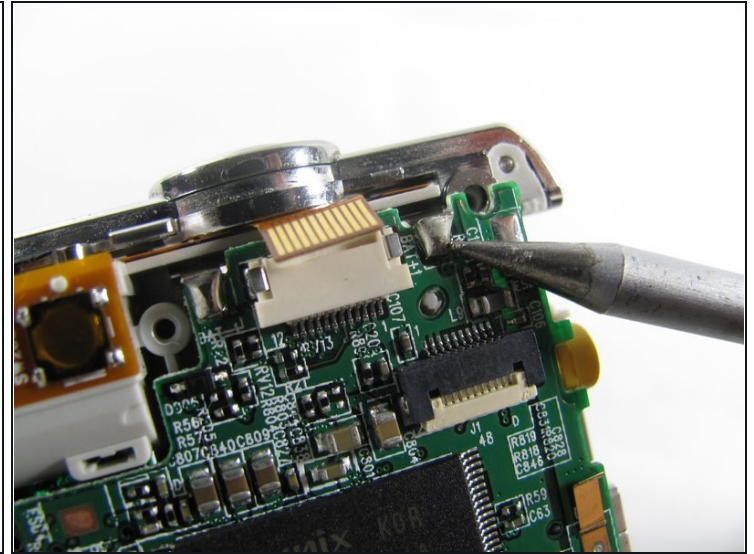
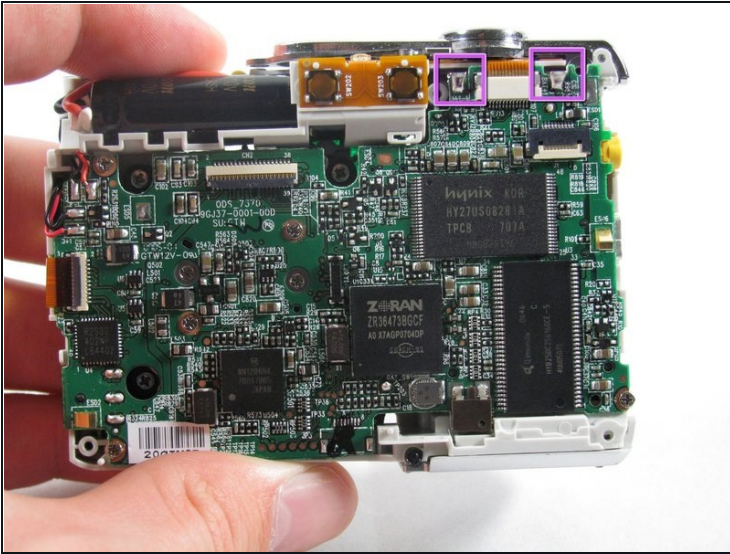
- Remove the ribbon cord located near the top right corner of the motherboard. Do this by carefully pulling the cord out of the socket using a pair of [tweezers](#).

Step 10



- Disconnect the ribbon cord located on the left side of the motherboard.
- Use tweezers or a spudger to lift the latch on the connector.
- Carefully remove the cord from the connector.

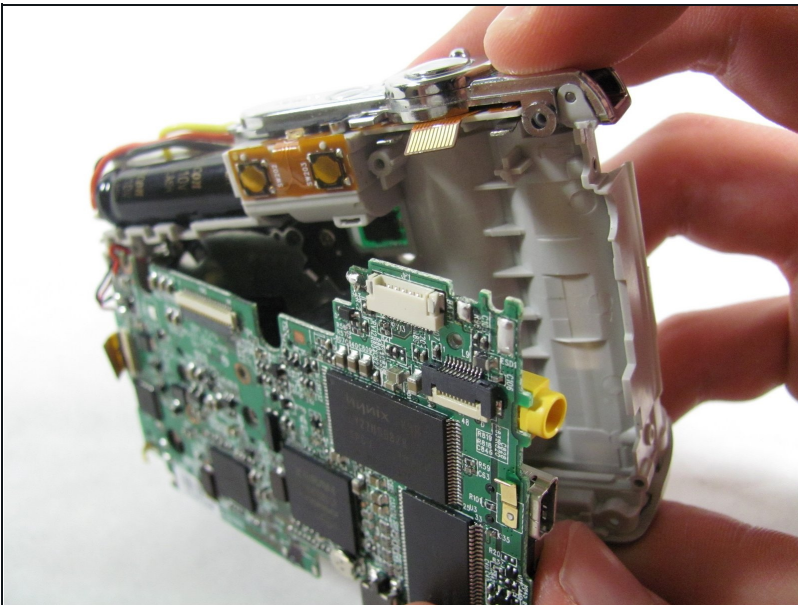
Step 11



- De-solder the 2 connection points.

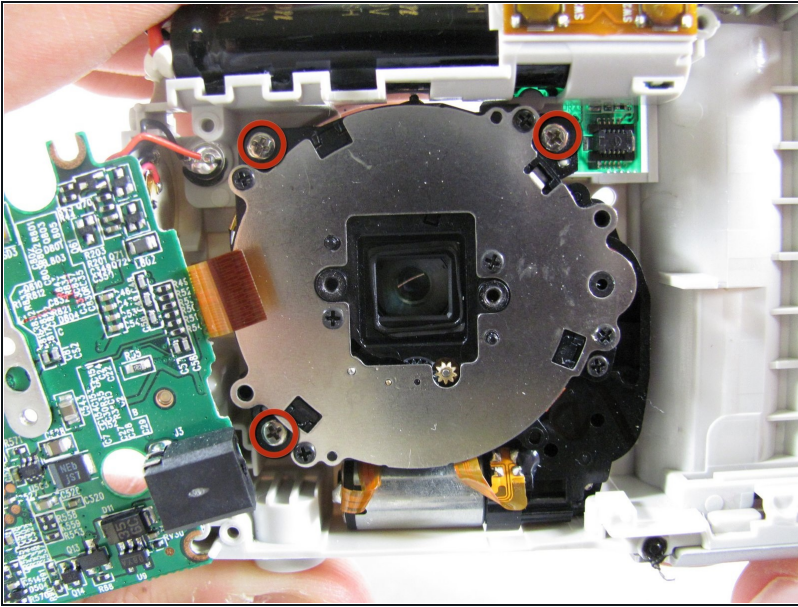
⚠ Be careful to not damage any part of the circuit board with the soldering iron.

Step 12



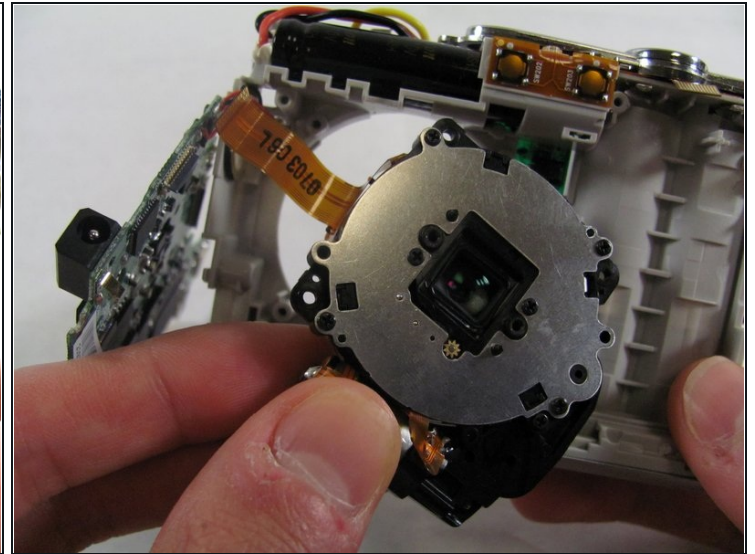
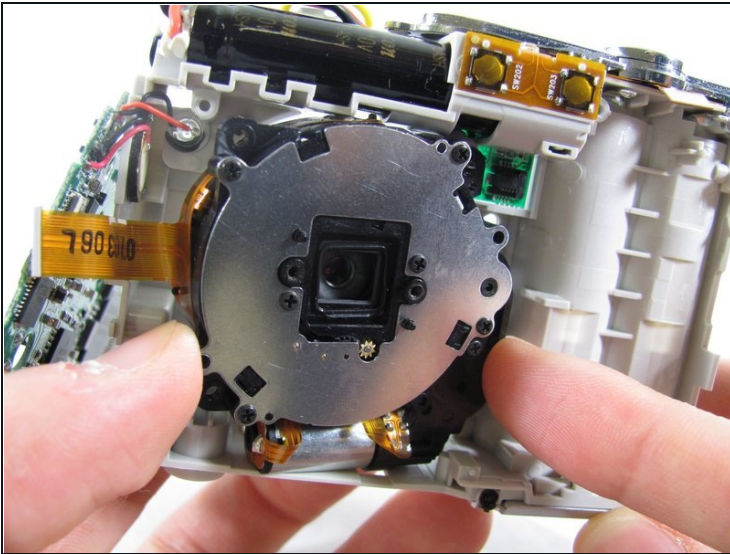
- Remove the motherboard from the camera casing.

Step 13 — Lens Assembly



- Remove the three 3.6 mm screws using a #00 screwdriver.

Step 14



- Slide the lens to the left and pull up. The lens should easily come loose and slide right out.

To reassemble your device, follow these instructions in reverse order.