



# HP iPAQ h4155 button panel replacement

Written By: John Pagliero





## TOOLS:

- [Phillips #00 Screwdriver](#) (1)
  - [Tweezers](#) (1)
-

## Step 1 — Battery



- While sliding the silver release tab up, simultaneously lift the cover up from the left side.

## Step 2



- Push the tab left to right to remove the cover.



## Step 3



- Now, lift the battery up and away from the device to remove it.

## Step 4 — Back Case



- Remove the four silver screws using the T5 Torx Screwdriver (T5 x .25 in).

## Step 5



- Remove the single black screw that is located beneath the HP sticker with the T5 Torx Screwdriver.

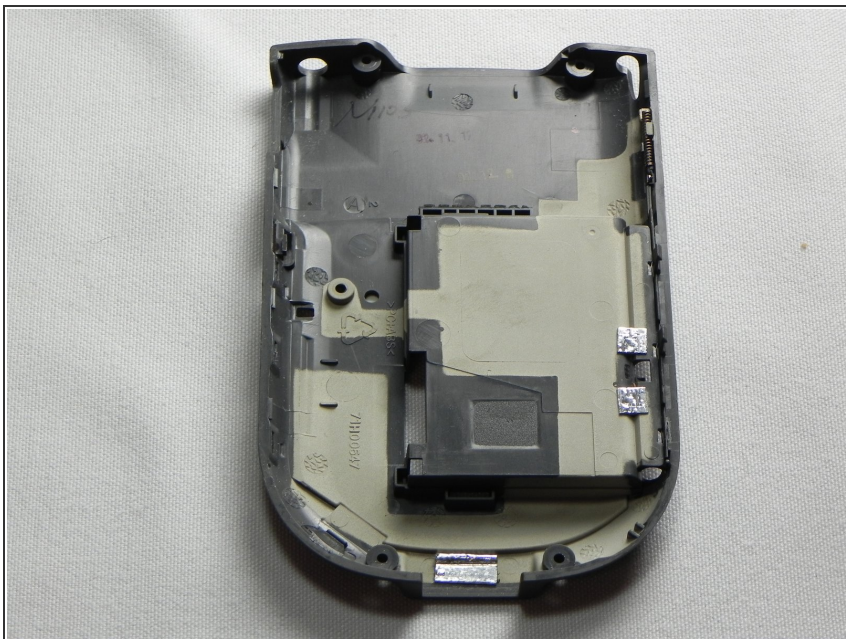
## Step 6



- Next, use your plastic removal tool to separate the gray back from the black center piece.
- For better results, start the separation at the corner piece.



## Step 7



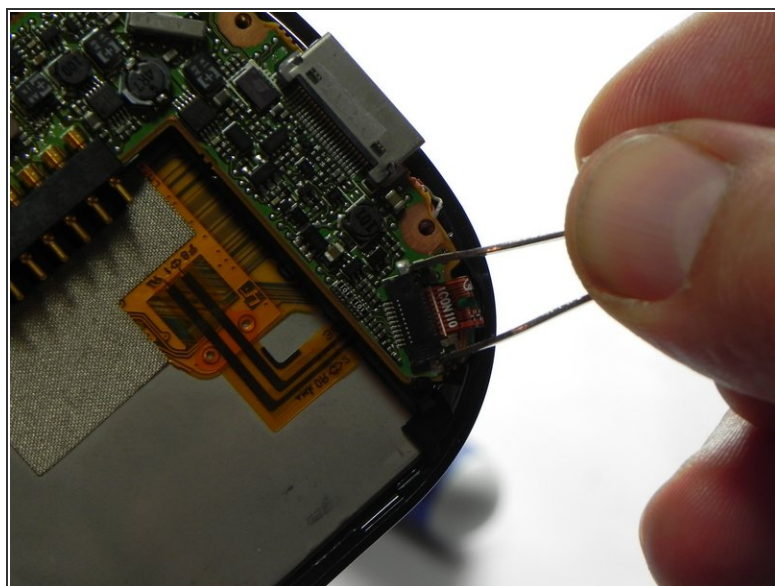
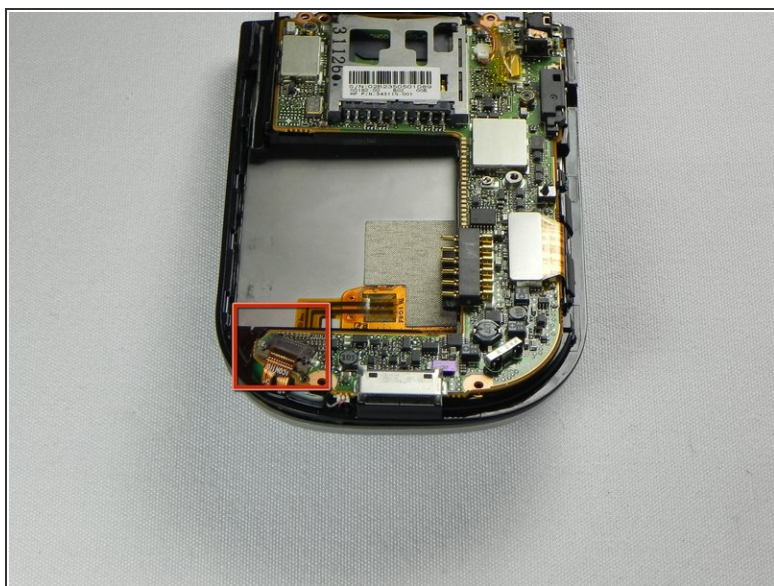
- Remove the back case.

## Step 8 — Face Plate



- Now that the back cover is removed, use the #00 Philips x .17 screwdriver to remove the small screw to the left of the SD card slot.

## Step 9

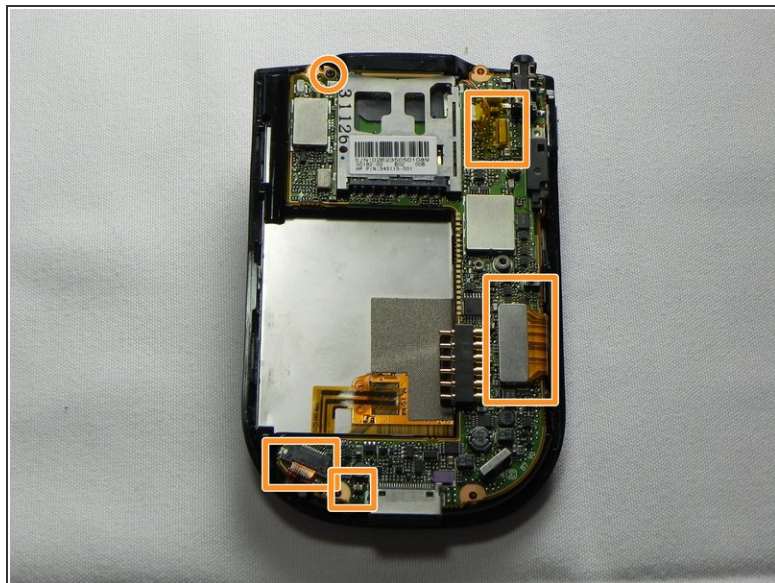


- Next, unlock and remove the ribbon cable.
- Using metal tweezers, carefully pull back on both sides of the brown bar unlocking the cable and slipping it out of the connector.

**⚠ The bar, the connector, and the cable are fragile components that are easily broken.**

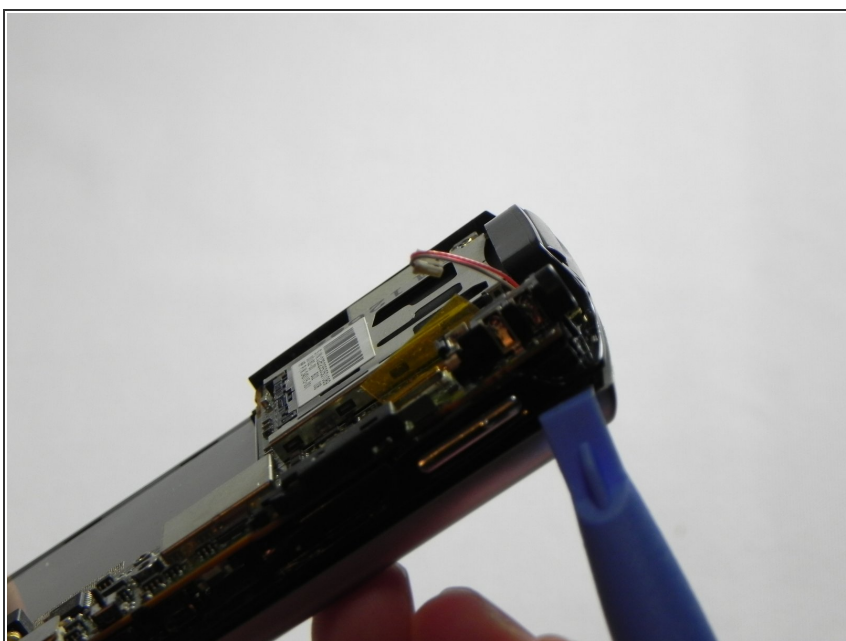


## Step 10



- Next, remove the wire from the bottom of the mother board.
- ⓘ The easiest method is to use metal tweezers and grip the plug closest to the connector.
- Make sure all the connections are properly disconnected before separation from the motherboard.

## Step 11



- Next, use a plastic removal tool and separate the silver front case from the black frame.

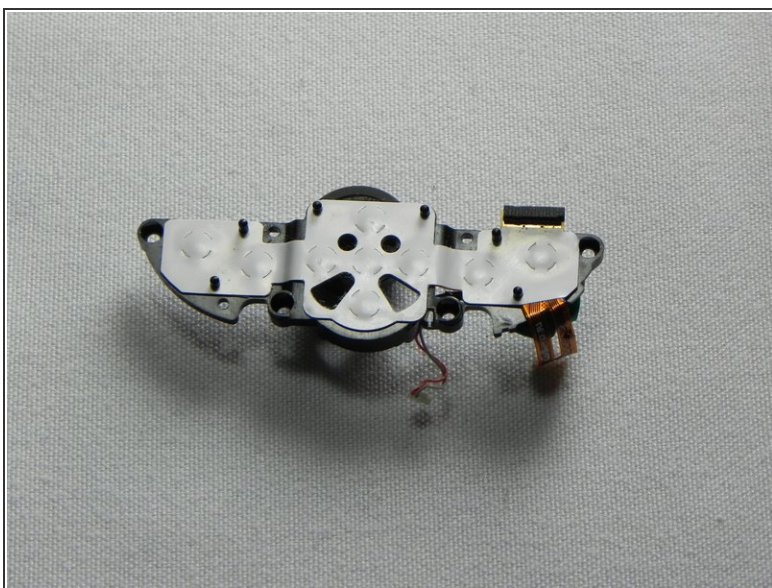


## Step 12 — JoyPad buttons



- Remove the 4 screws along the bottom of the faceplate
- They are #00 Philips head screws

## Step 13



- Once removed you can easily separate the keys from the body.

To reassemble your device, follow these instructions in reverse order.