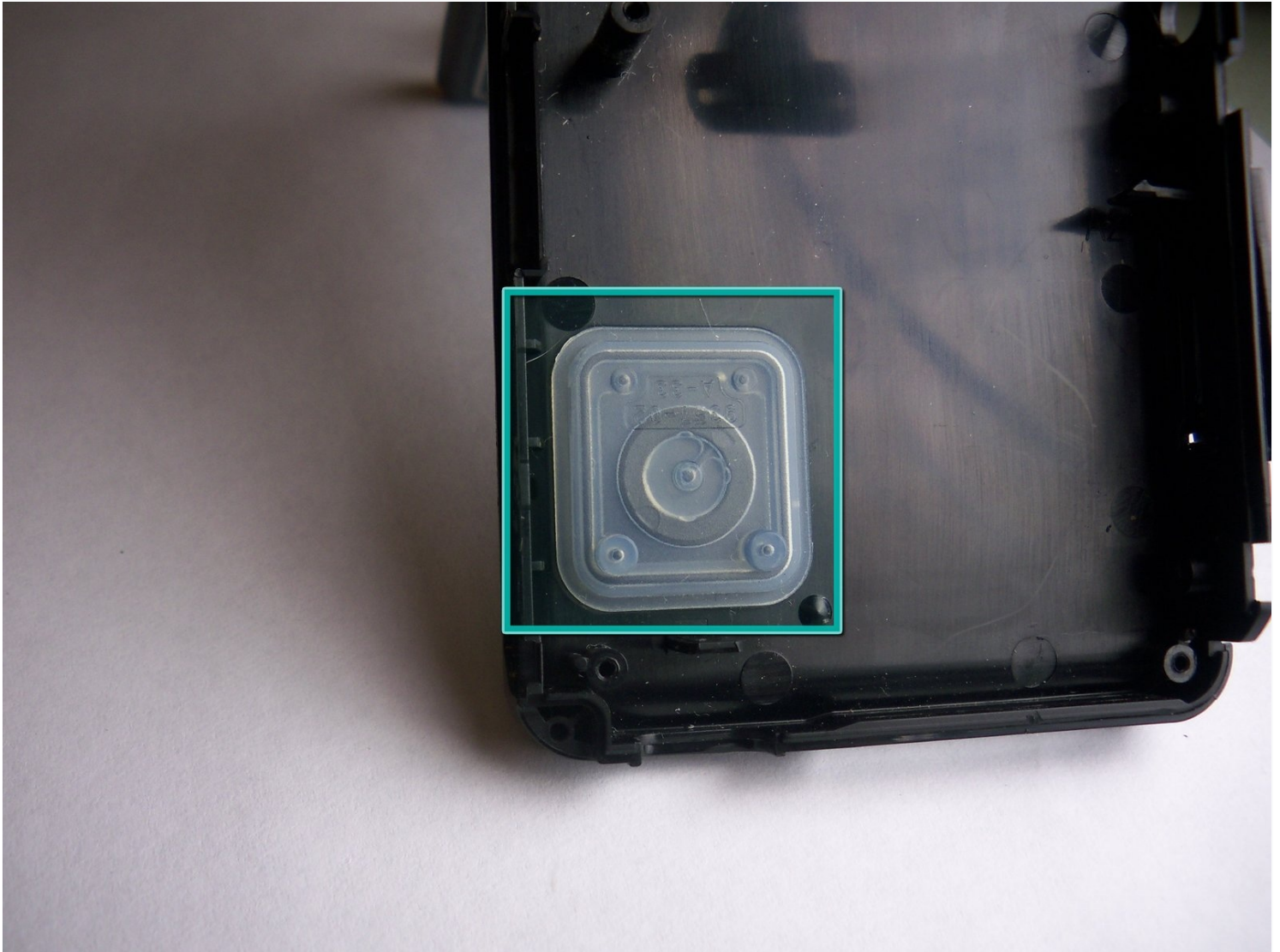




Jazz HDV178 Camcorder Power Button Replacement

If your device won't turn on and you wish to...

Written By: timothy



INTRODUCTION

If your device won't turn on and you wish to check to make sure the power button is not the cause, this guide will show you how to get to it.

TOOLS:

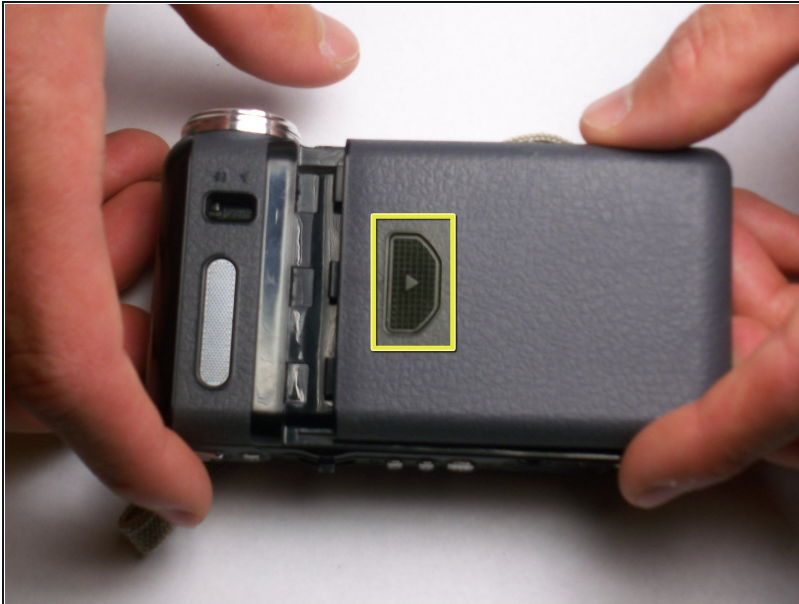
[Phillips #0 Screwdriver](#) (1)

[Phillips #00 Screwdriver](#) (1)

[iFixit Opening Tool](#) (1)

[Tweezers](#) (1)

Step 1 — Back Cover



- ① On the back of the camcorder, the side opposite of the flip-out screen, there is a section of grooved plastic with a small arrow.
- Press down on the grooved plastic with your thumbs.
- Push the back cover in the direction indicated by the small arrow on the grooved plastic. The back cover should slide right off.

Step 2 — Battery



- Once you have the back cover off, the camcorder should look like this.
- Look on the battery for a model number to assure that you acquire the correct replacement part.
- The camcorder model number is located in the red box. Verify that you have a Jazz HDV178.

Step 3



- Take the battery out by pulling up on the bottom of the battery. You should be pulling from the side of the camera where the wrist strap is attached.

Step 4 — Housing



- Remove the camera mount by unscrewing the 4.5 mm screw in the hole.
- This is the bottom of the camcorder near where the wrist strap connects.

Step 5



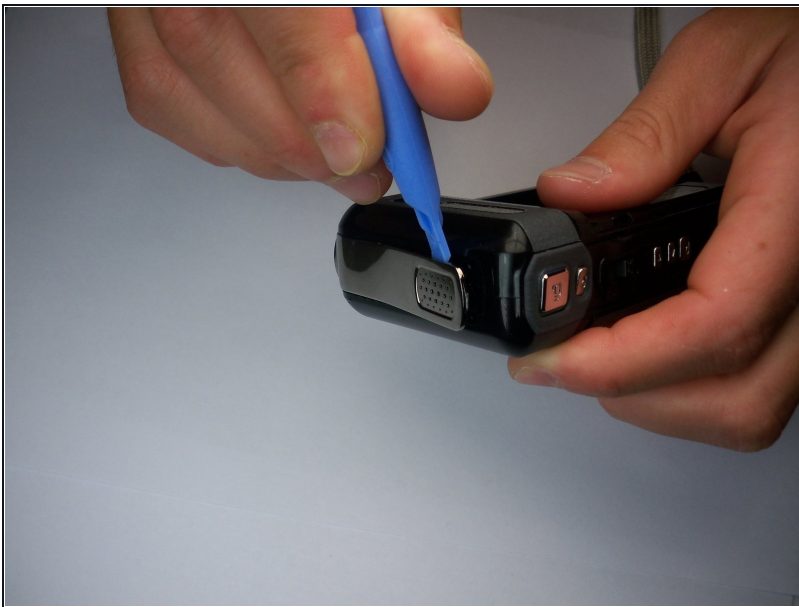
- Remove the 4.5 mm screw located near the battery slot.

Step 6



- Break the glue that attaches the lens cover to the camcorder by sliding the plastic prying tool beneath the circumference of the part.
- After the glue is broken, remove the lens cover.

Step 7



- Use a small plastic pry tool to gently pry off the silver strip on the top of the camera.
- Make sure to run the tool under the outline of the strip as you pry it off so the plastic does not snap.

Step 8



- Locate the side of the camcorder beneath the lens and on the opposite side of the wrist strap.
- Remove the silver strip using the same process as the previous step.
- Remove the two 4 mm screws that were hidden under the cover.

Step 9



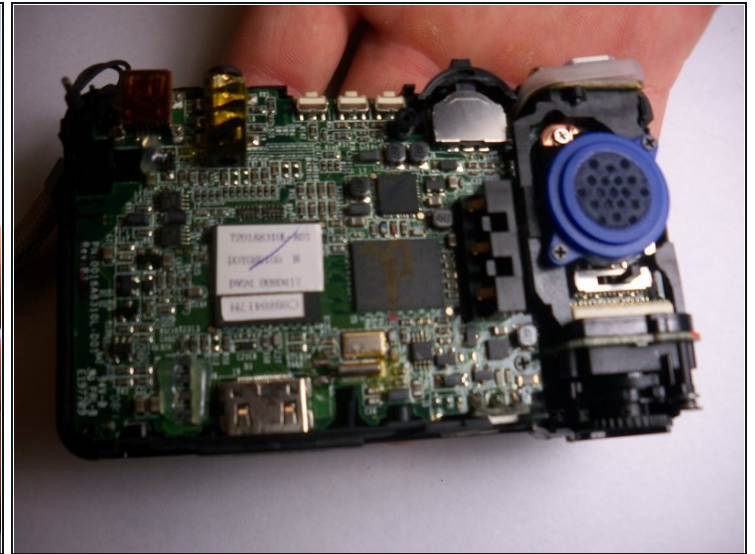
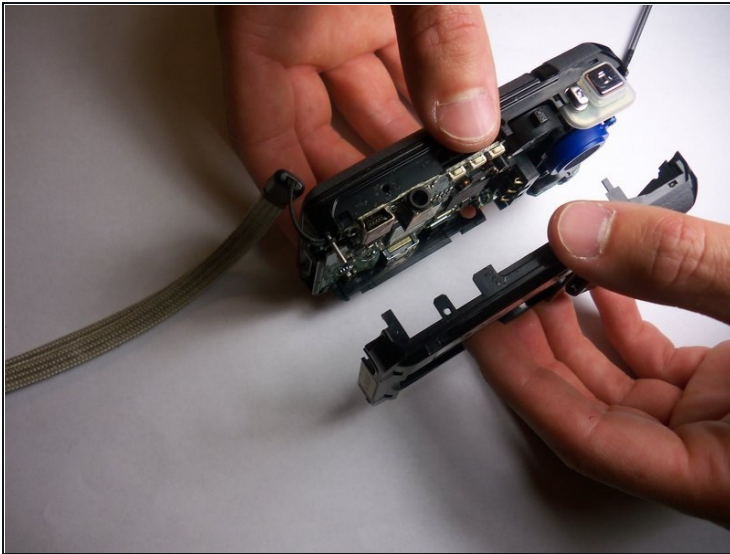
- Pry off the rubbery cap, which covers the buttons. Use the same process as the previous two steps.
- ① Slide your prying tool underneath the entire cover to ensure that the glue breaks cleanly and the cover does not snap.

Step 10



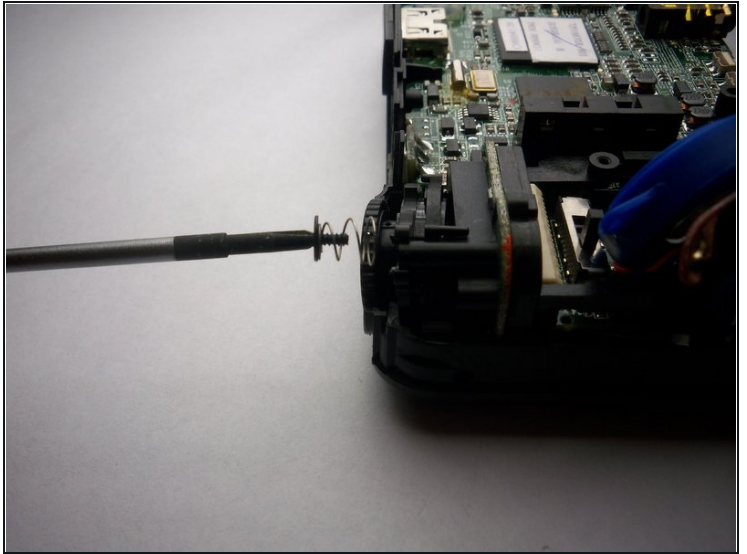
- Remove the three combined buttons so they are not misplaced.

Step 11



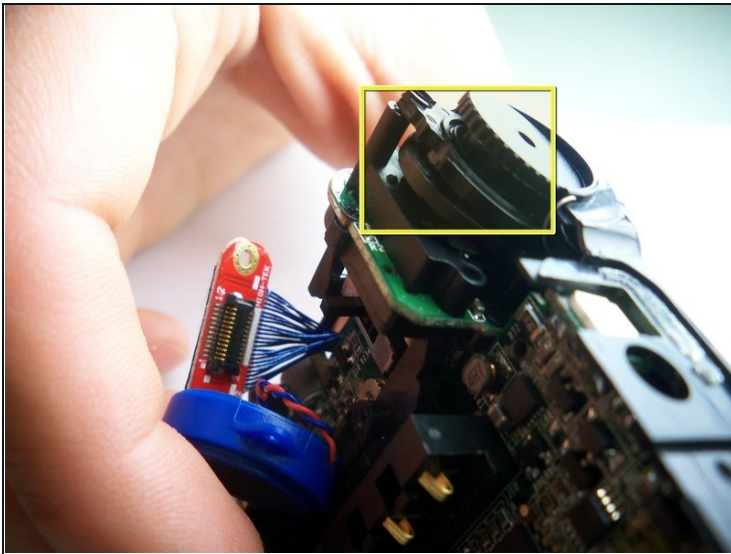
- Using a firm hold on both sides of the camcorder, gently pull apart the two halves. Pressure should be evenly distributed across the entire device.
- ① If the camcorder does not come apart easily, double check that all of the screws are removed. Return to the previous steps for screw removal if you find a screw that is still attached.

Step 12 — Lens



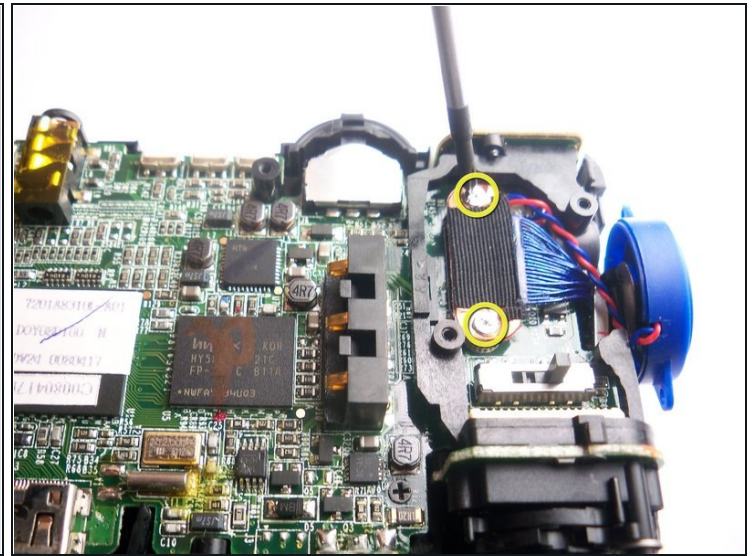
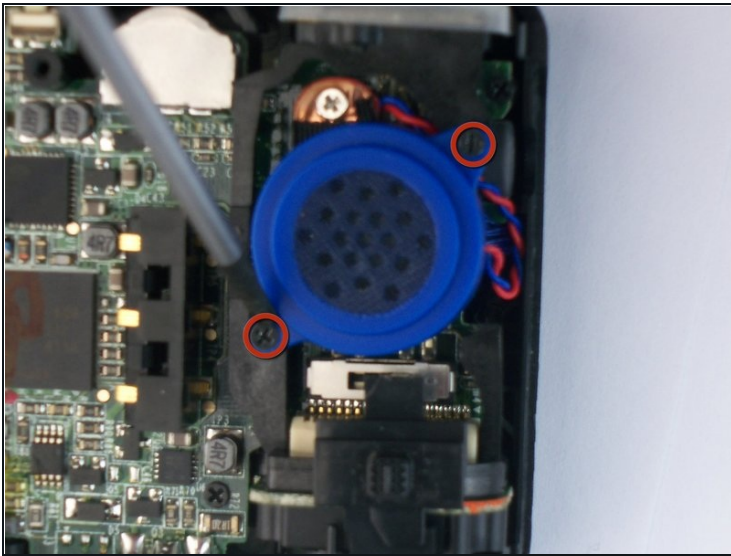
- Remove the big headed 3.5 mm screw that holds the lens in place.

Step 13



- Grab the plastic part covering the lens and gently wiggle it out of place to uncover the lens.
- ⓘ Be sure to note how the part is attached so that you can replace it correctly.

Step 14 — Removing Speaker



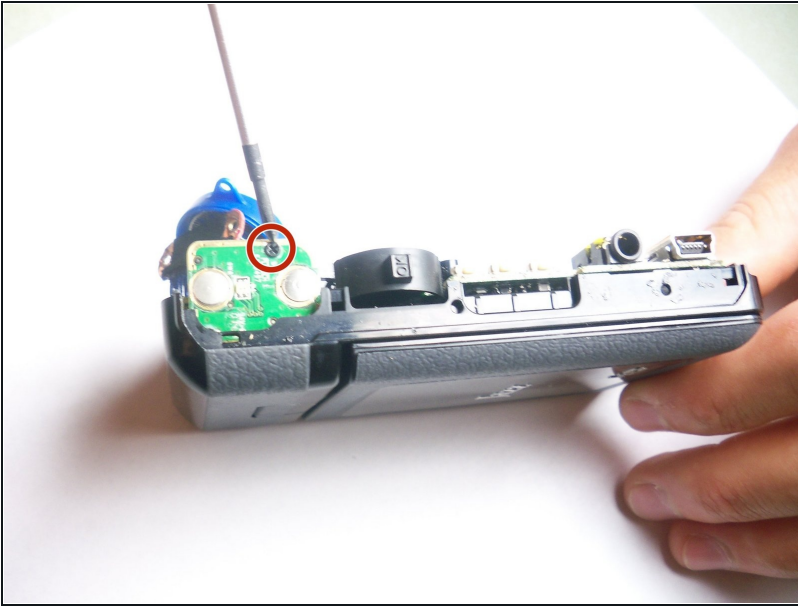
- Remove the 4 mm screws holding the speaker onto the motherboard.
- Once the speaker itself is unscrewed, remove the 4 mm silver screws that hold the connection wires to the LCD Display.

Step 15 — Motherboard



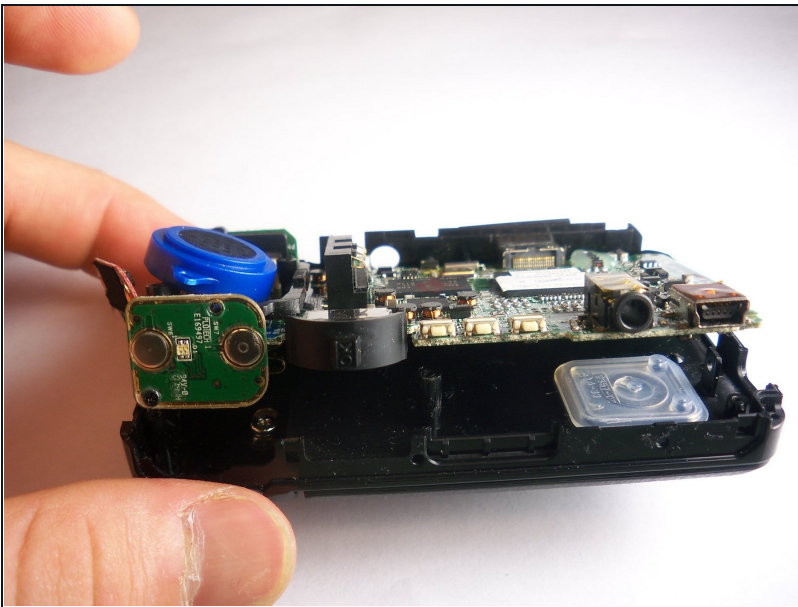
- Remove the four Phillips head screws attaching the motherboard to the housing.

Step 16



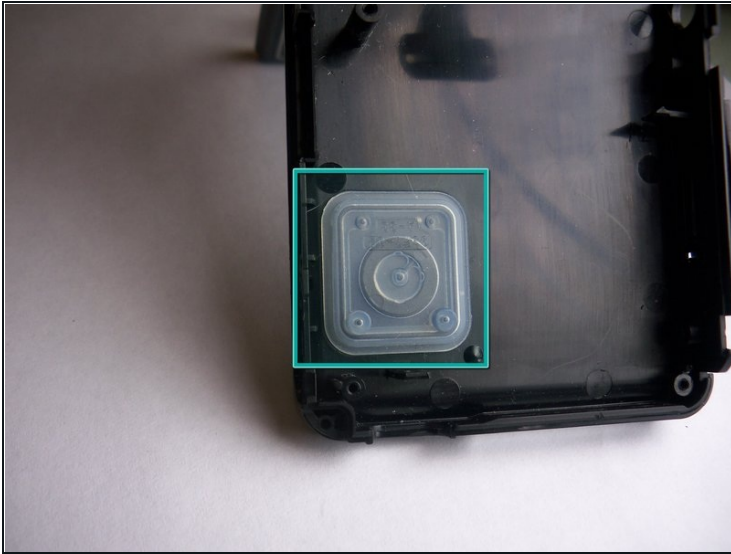
- Remove the individual 4mm screw under the top button to release the motherboard from the housing.

Step 17



- Using care, lift the motherboard from the plastic housing.
- ⚠ This step requires patience to ensure no delicate components are damaged.

Step 18 — Power Button



- Once you removed the motherboard, remove the clear rubber button.
- Use rubbing alcohol on a Q-tip to clean the surface.
- Allow to dry and wipe with a clean Q-tip.

To reassemble your device, follow these instructions in reverse order.