



# Nvidia Shield Tablet Front and Rear Camera Replacement

A camera lens on any device is naturally...

Written By: Molly Bauer



# INTRODUCTION

A camera lens on any device is naturally exposed to the elements of nature to obtain the clearest photo; however, this leaves the lens susceptible to damage and cracking. Cameras are used extremely frequently, especially on a device as portable as the Nvidia Shield Tablet. Follow this guide to replace both cameras on your tablet.

---

## TOOLS:

[Anti-Static Wrist Strap](#) (1)

[Spudger](#) (1)

[Precision Tweezers Set](#) (1)

[Phillips #00 Screwdriver](#) (1)

[iFixit Opening Tool](#) (1)

---

## Step 1 — Rear Case



- First, remove the stylus from your tablet.

## Step 2



- Set the tablet so the buttons, microSD, and stylus port are facing you.
  - Open the microSD slot.
  - Using the flat end of the spudger tool, carefully pry open the case starting from the microSD slot, slowly sliding the spudger along the inside edge of the case.
- ⚠ You may want to put on your [anti-static wrist strap](#) at this point as the motherboard will be vulnerable to physical touch and electrostatic shock after the casing is removed.

## Step 3



- As you remove your case, be aware of small clips along the edges.
- Finally, set the old casing aside.

## Step 4 — Speaker



- Orient your tablet so that the top of the tablet is furthest away from you.
- Locate the top speaker, a black semi-rectangular piece on the top right side of the tablet.

## Step 5



- Remove the two 3.0 mm Phillips #00 screws securing the speaker.

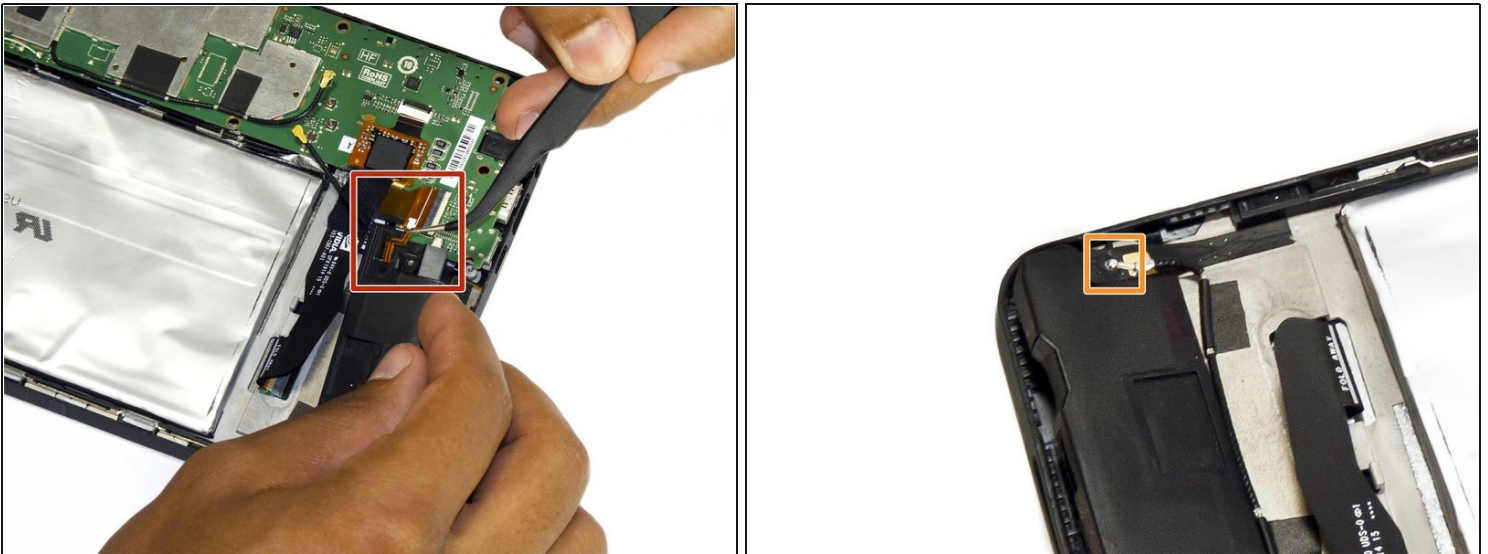


## Step 6



- Gently pry the speaker up with the flat end of a spudger.
- Use a plastic opening tool to peel up the tape covering the speaker wire.

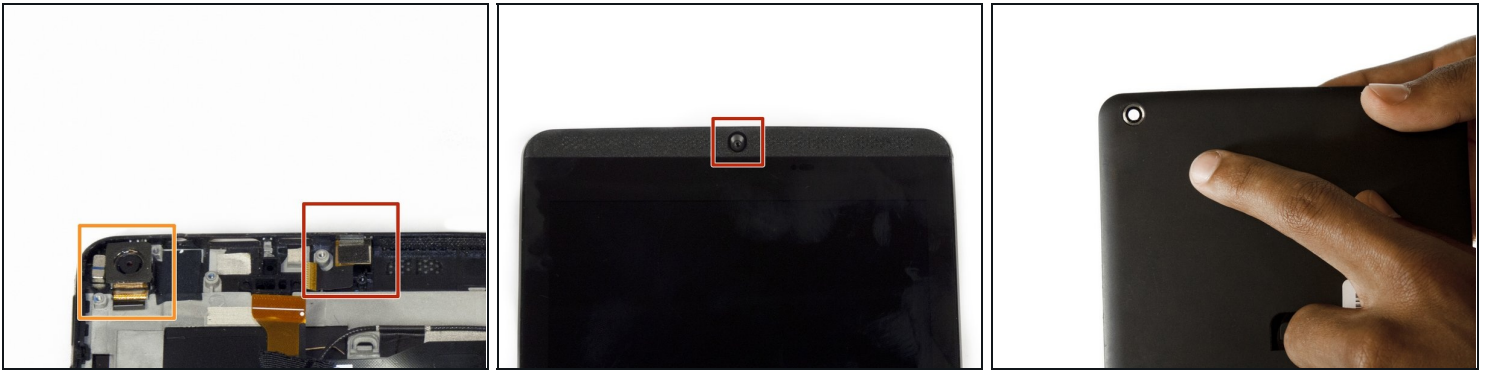
## Step 7



- Next, with a gentle but firm grip, pull the audio input ribbon with the precision tweezers.
- Finally, unplug the power source from your speaker using the precision tweezers.

⚠ Make sure you are using your [anti-static wrist strap](#).

## Step 8 — Front and Rear Camera



- Having removed the speaker, locate the front-facing camera resting just underneath the speaker.
- The rear-facing camera is on the left side of the tablet and it aligns with the camera hole on the back casing of your tablet.

## Step 9



- Gently unplug each camera using the precision tweezers.

To reassemble your device, follow these instructions in reverse order.