



# Samsung Gear S Display Assembly Replacement

This guide will show step by step how to remove the display on the watch. This will allow access to other parts in the watch as well as the display itself.

Written By: Crystal Schmitt



---

## INTRODUCTION

This guide shows how to remove the display of the watch from the rest of the watch.

---



### TOOLS:

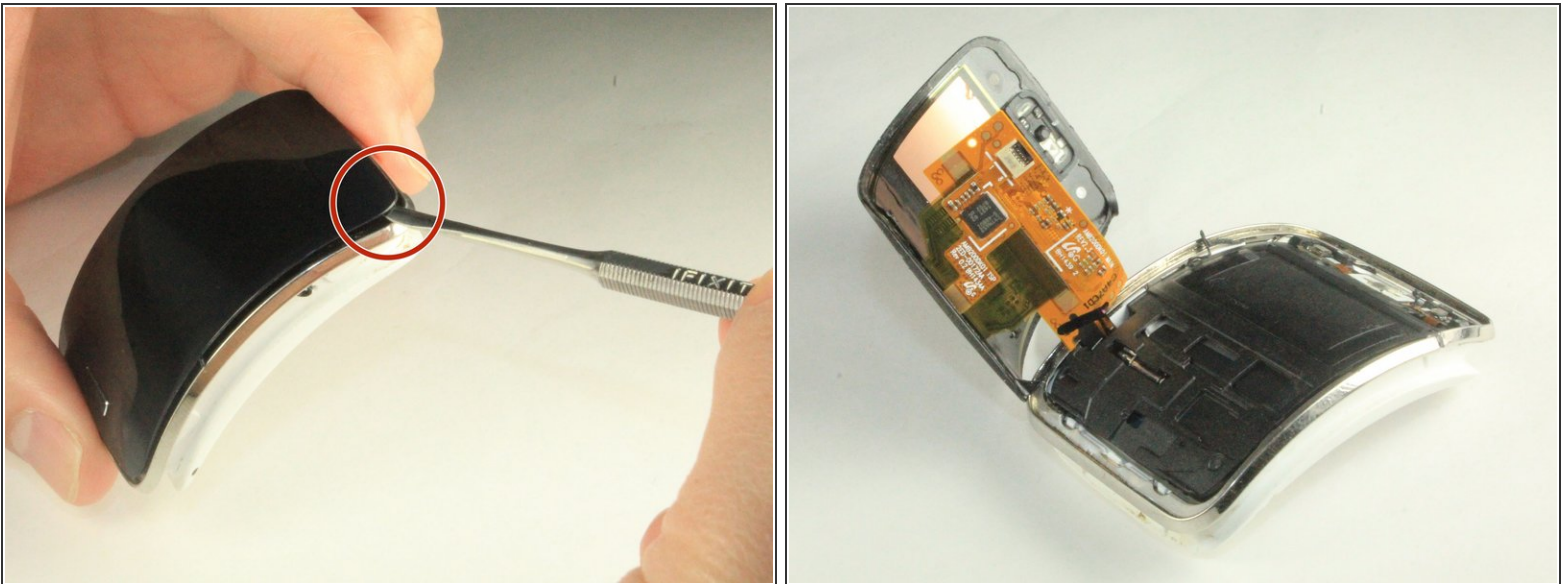
- [Metal Spudger](#) (1)
  - [iFixit Opening Tools](#) (1)
-

## Step 1 — Display Assembly



- Remove the wrist strap by peeling back the rubber starting from one corner of the watch face. Continue peeling the rubber away from the watch face until the strap is completely off.

## Step 2



- Starting from an edge, wedge a metal spudger in between the screen and the chrome trim ring and pry, lifting the screen outwards.

 Some force is needed due to adhesive seal.

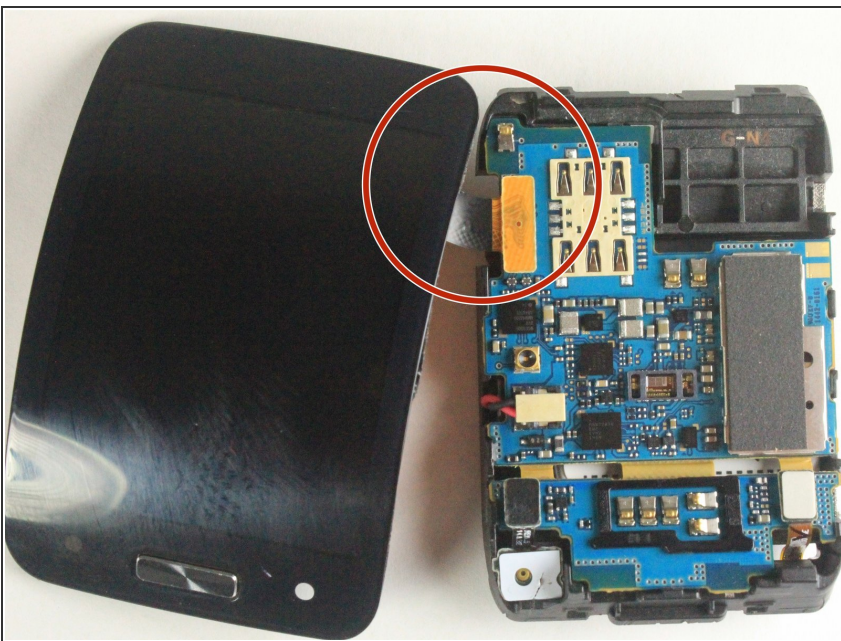


### Step 3



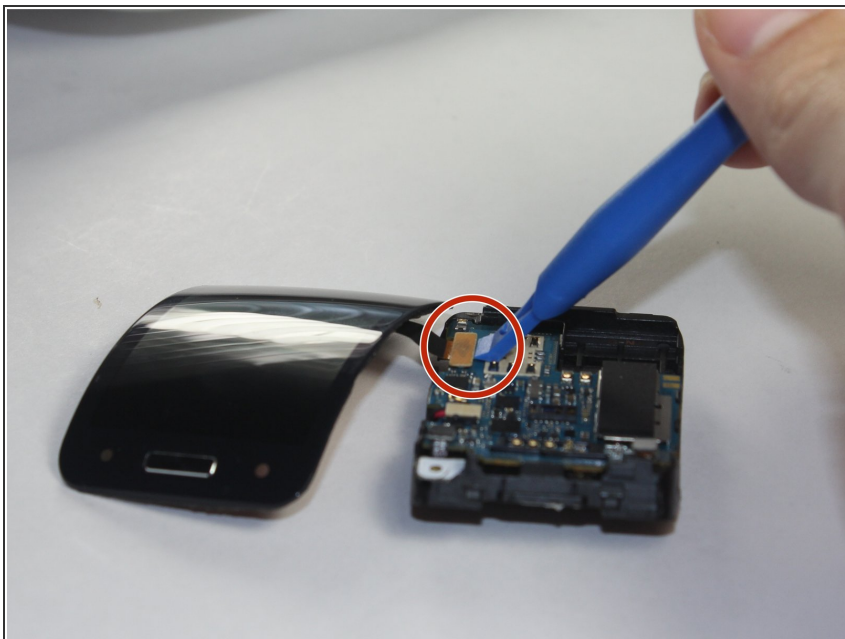
- Use a plastic opening tool to gently pry upwards on the plastic motherboard assembly.

### Step 4



- Locate the ribbon assembly attaching the display to the motherboard.

## Step 5



- Use a plastic opening tool to detach the glass screen/ LED Display ribbon connector from the motherboard.

## Step 6



- Now the watch should be in three separate pieces.

To reassemble your device, follow these instructions in reverse order. You will need an adhesive to connect the screen back to the rest of the watch.

