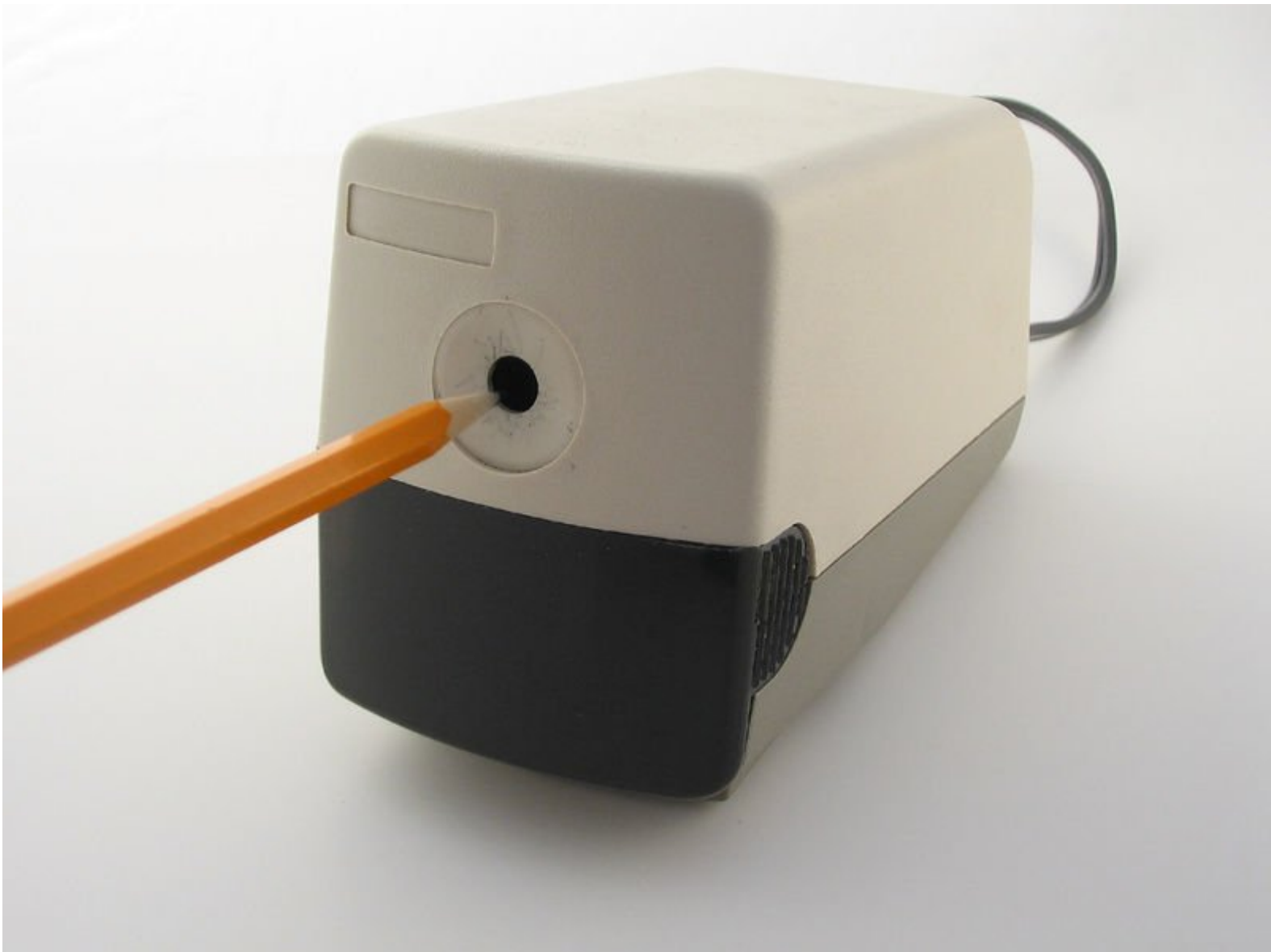




# Boston Electric Pencil Sharpener Cutter Replacement

This guide will show how to open up the Boston Electric Pencil Sharpener and replace a dull or broken cutter.

Written By: Randy Yonce



## INTRODUCTION

If your pencil sharpener is failing to sharpen your pencil or unevenly sharpening your pencil, it might be time to replace the cutter. You can find replacement cutters [here](#).



### TOOLS:

- [WD-40](#) (1)

*Optional*

- [Phillips #2 Screwdriver](#) (1)
- [Flathead Screwdriver](#) (1)
- [Socket Wrench](#) (1)



### PARTS:

- [Replacement Cutter](#) (1)

## Step 1 — Cutter



- Remove the tray from the front of the pencil sharpener and empty the pencil shavings.

⚠ Make sure the pencil sharpener is unplugged!

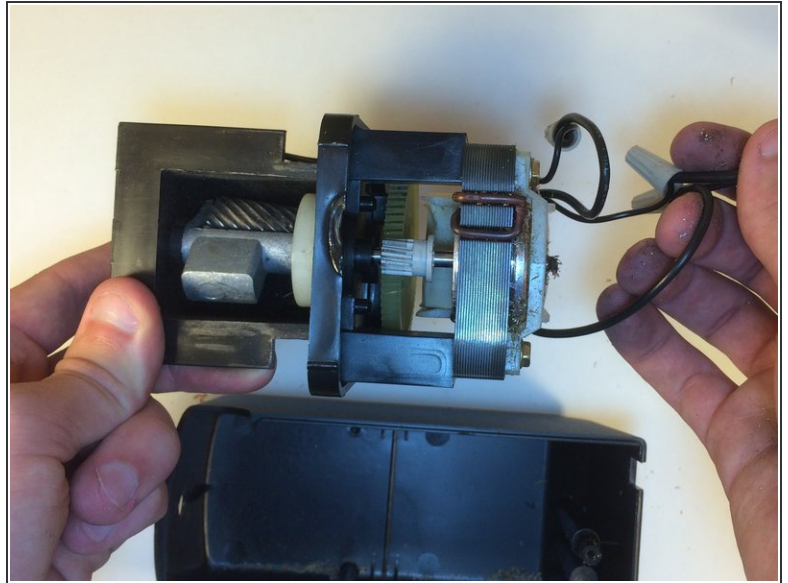
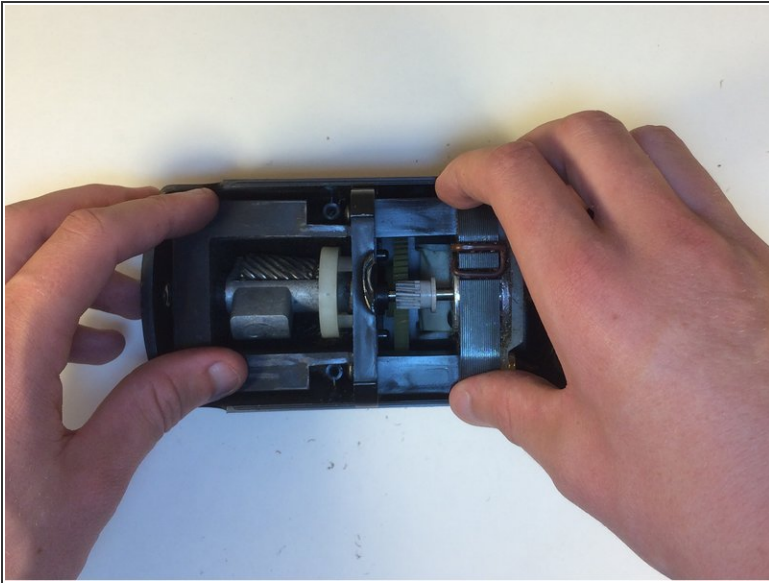
## Step 2



- Unscrew the three screws securing the bottom of the sharpener.

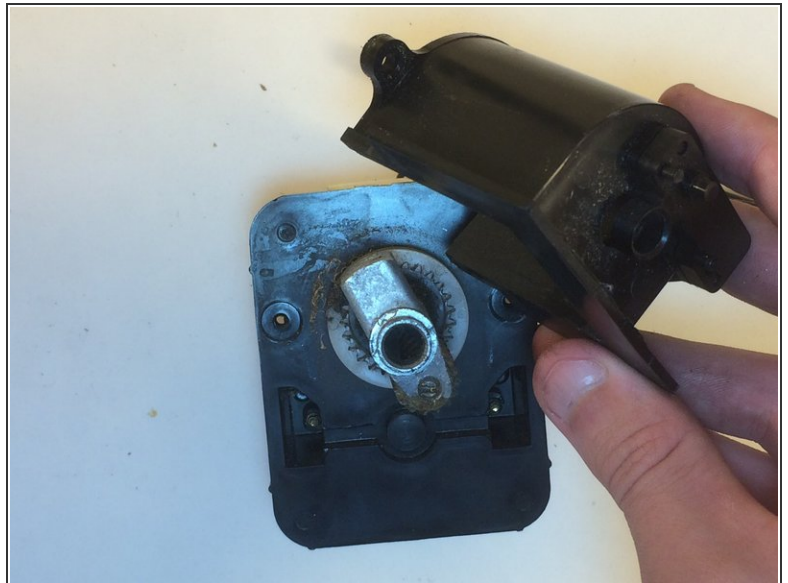
ⓘ The screwdriver must be 6" long to reach the two screws in the front of the sharpener.

### Step 3



- Lift the motor and cutter from the top case of the sharpener.
- Carefully move the wires so that the case can be completely removed.
- ⓘ You shouldn't have to disconnect any wires to take the case off. If so, contact the manufacturer.

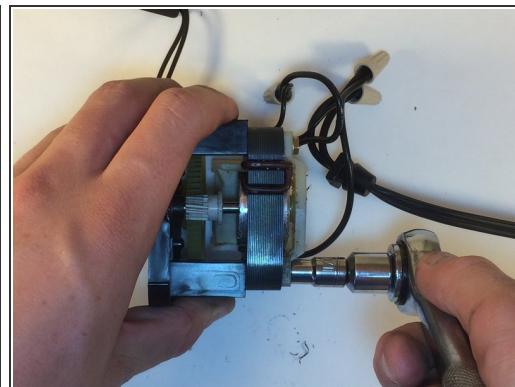
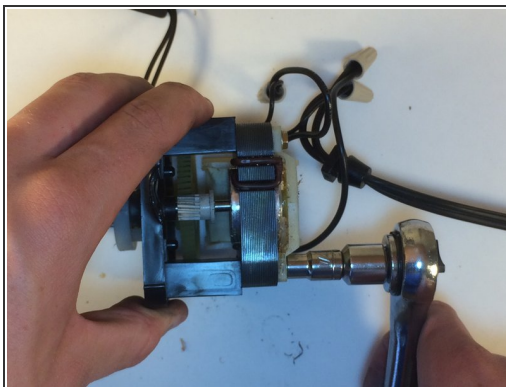
### Step 4



- Unscrew the protective case around the cutter by locating the two screw on the front of the sharpener.

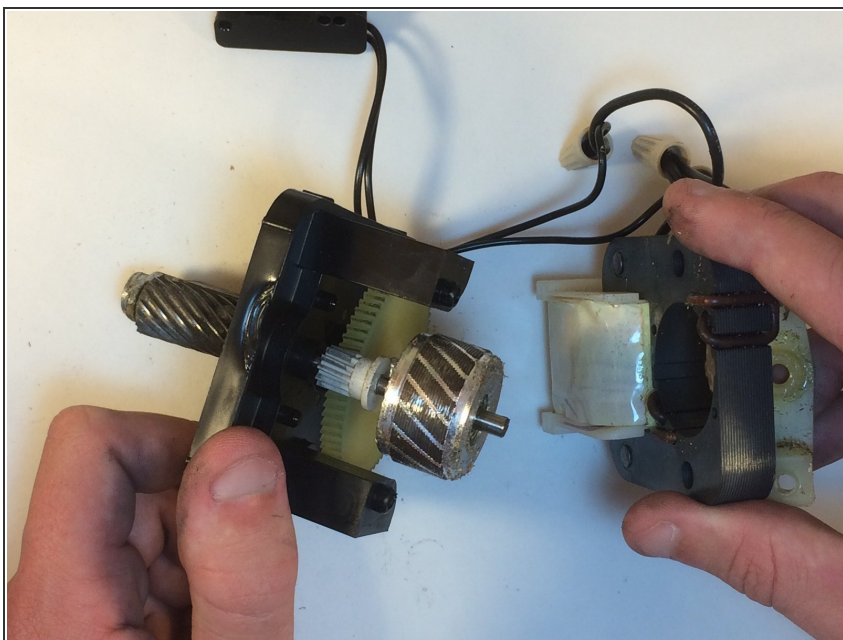


## Step 5



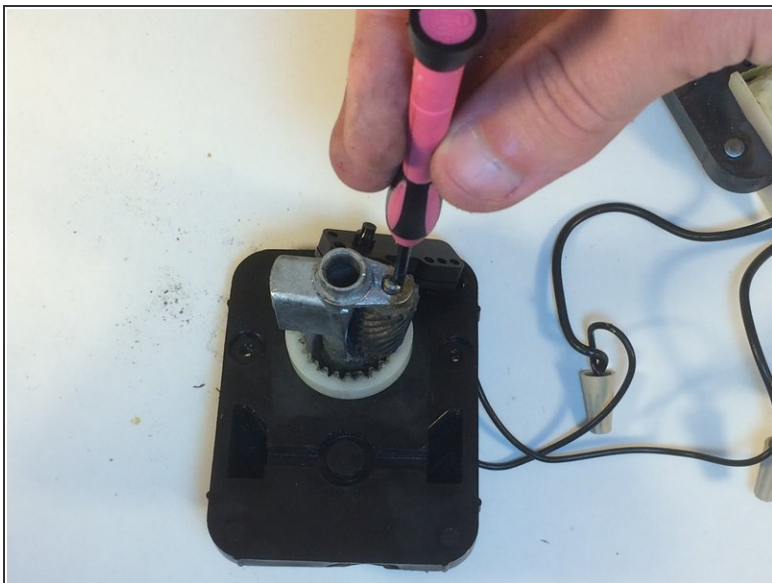
- Use the socket wrench to remove the two bolts in the back of the sharpener.
- ① You need to remove the motor in order to reach the back of the cutter.

## Step 6



- Carefully separate the motor and the case around the motor from the cutter.
- Guide the wires through the holes in the casing to detach them from the cutter section of the sharpener.

## Step 7



- Unscrew the sharpener with a small standard screwdriver and remove the long screw to loosen the cutter.
- ⓘ Make sure to hold the cutter to keep it from rotating.

## Step 8



- Replace the cutter.
- ⓘ WD-40 would be helpful, but not necessary.

To reassemble your device, follow these instructions in reverse order.