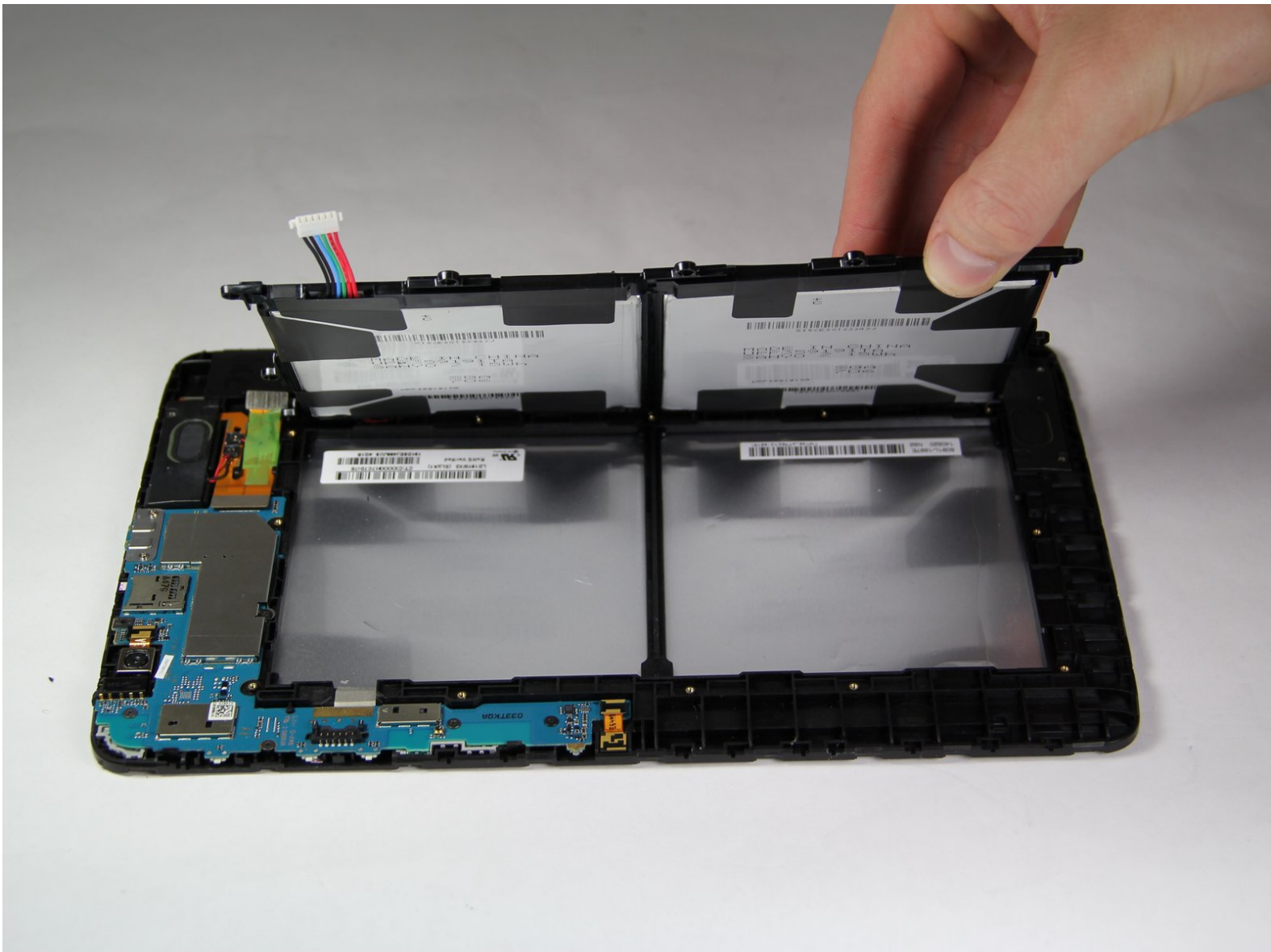




LG G Pad 10.1 Battery Replacement

This guide will demonstrate how to remove the LG G Pad's battery for replacement.

Written By: Alex Roszkowski



INTRODUCTION

This is a fairly simple guide to remove the battery from your tablet.



TOOLS:

- [iFixit Opening Tools](#) (1)
- [Phillips #000 Screwdriver](#) (1)



PARTS:

- [LG G Pad 10.1 Replacement Battery](#) (1)

Step 1 — Rear Case



- To remove the back panel of the device, start by attempting to fit the plastic opening tool in the crease between the screen and the back panel of the tablet.
 - Try opening picks if the case is not flexing enough, or if it is already cracked to prevent further damage.
 - You can use your hands to push against the corners of the device to attempt to make the gap larger for your plastic opening tool to fit in.
 - If you are replacing your screen because it is damaged, it may be useful to pick away at some of the glass to expose the clips in the edges of the plastic.
 - Insert the corners of your plastic opening tool into the slots that are on the very outside edge of your device to start disconnecting the panel.
- ⚠ On some models, there is a vertical strip of adhesive between the battery and the back cover on the left side of the Verizon logo. Be careful not to damage the battery when separating the adhesive!

Step 2



- Once the edge of your device's panel is separate from the screen, continue moving around the outside of the device while continuing to pry the two pieces apart from each other.

Step 3



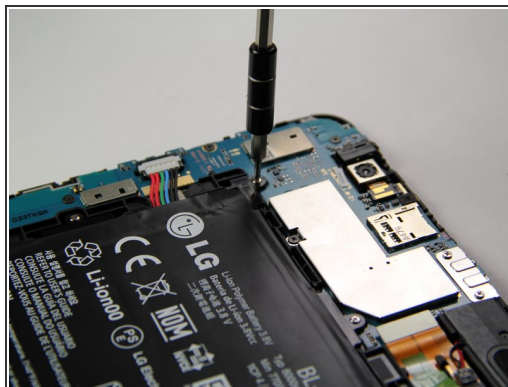
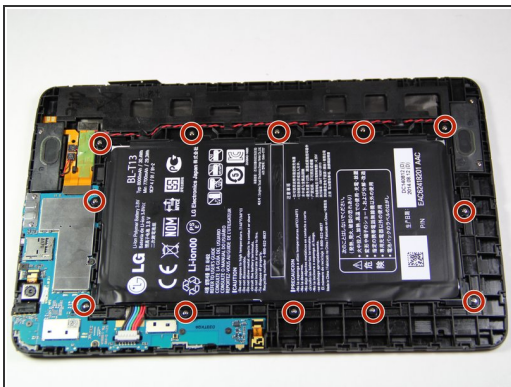
- Insert another plastic opening tool (or a similar tool) between the screen and the back panel on the opposite side of the device to hold it open.

Step 4



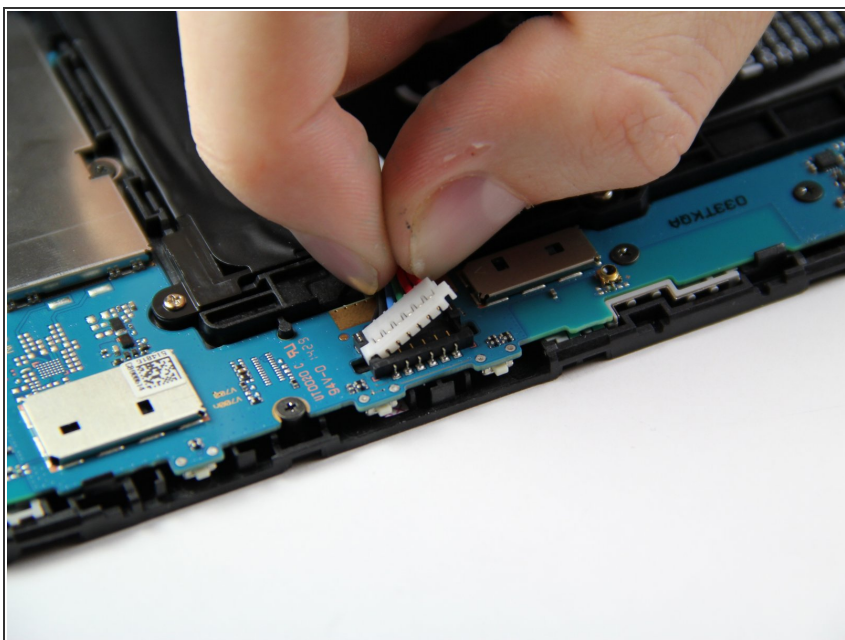
- Disconnect the battery by inserting the point of a spudger underneath the white tabs on either side of the connector and gently pry up.

Step 5 — Battery



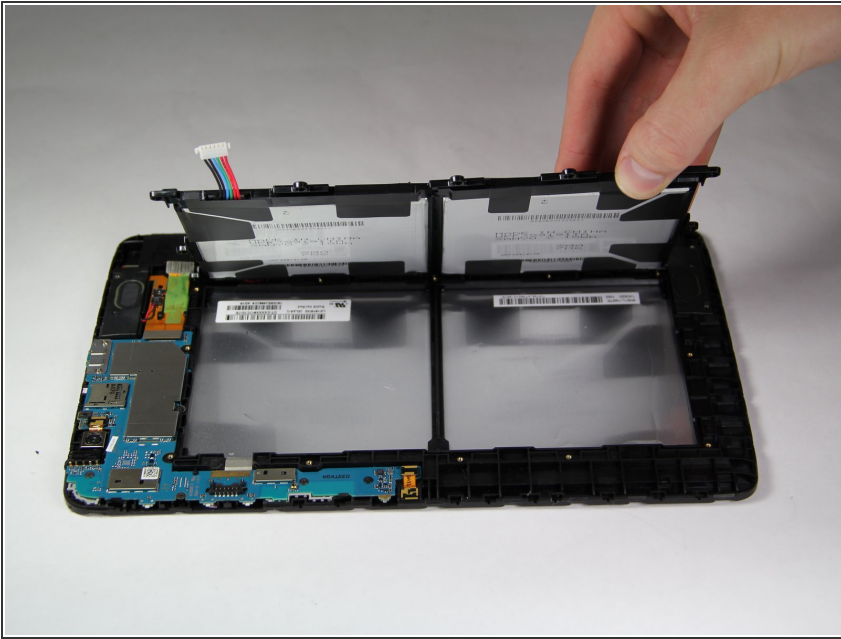
- Remove the twelve 4 mm Phillips #000 screws surrounding the perimeter of the battery.

Step 6



- Disconnect the battery cable from the motherboard by grabbing the cable and pulling upwards.

Step 7



- Now that all of the screws are removed and the cable is disconnected, lift the battery upwards to remove it from the device.

To reassemble your device, follow these instructions in reverse order.