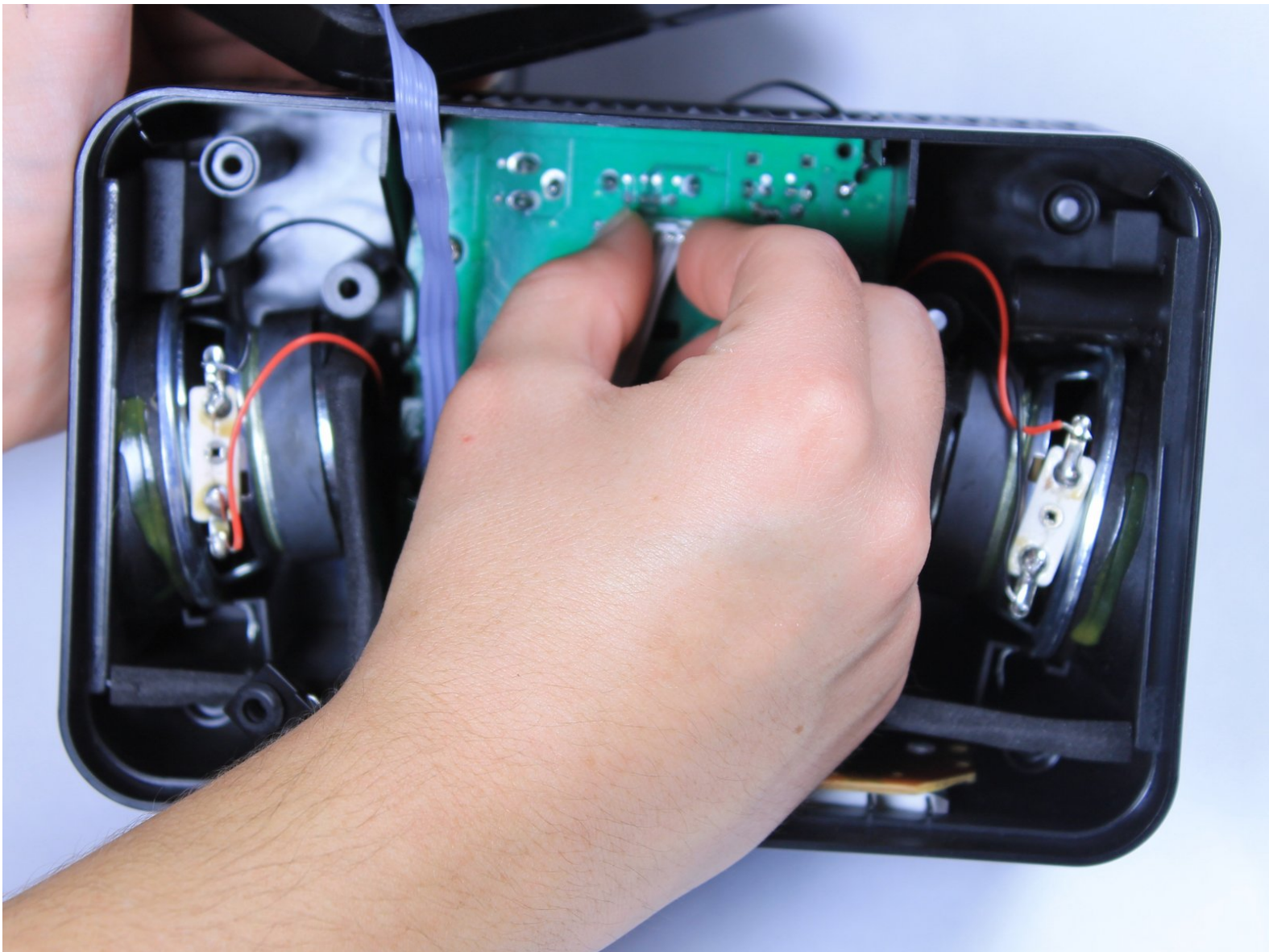




# Insignia NS-CLLT01 Motherboard Removal

This guide will show you how to remove the motherboard in your alarm clock.

Written By: Preston Jackson



## INTRODUCTION

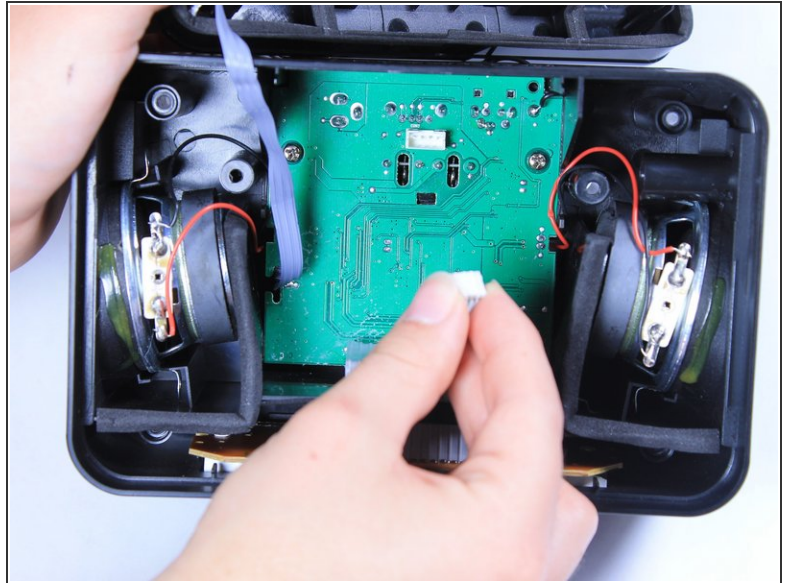
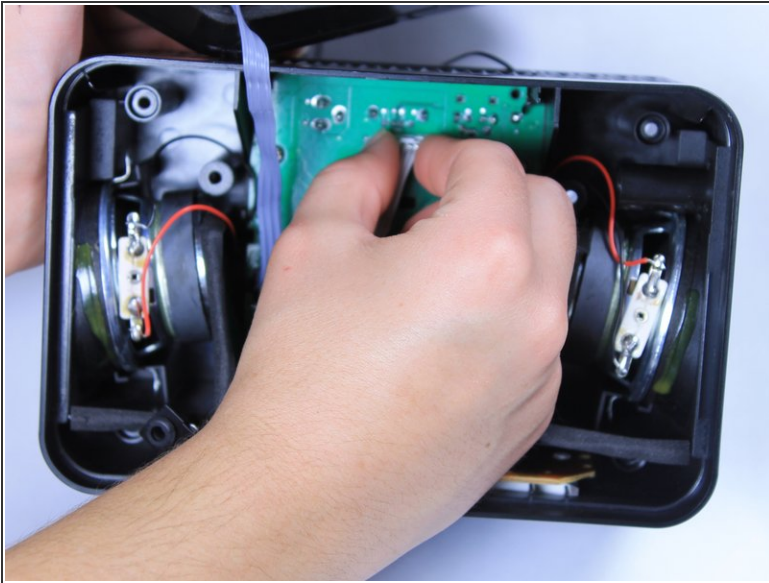
To replace many parts of the clock radio, the motherboard will need to be removed. This guide will lay out the necessary steps for that process.



### TOOLS:

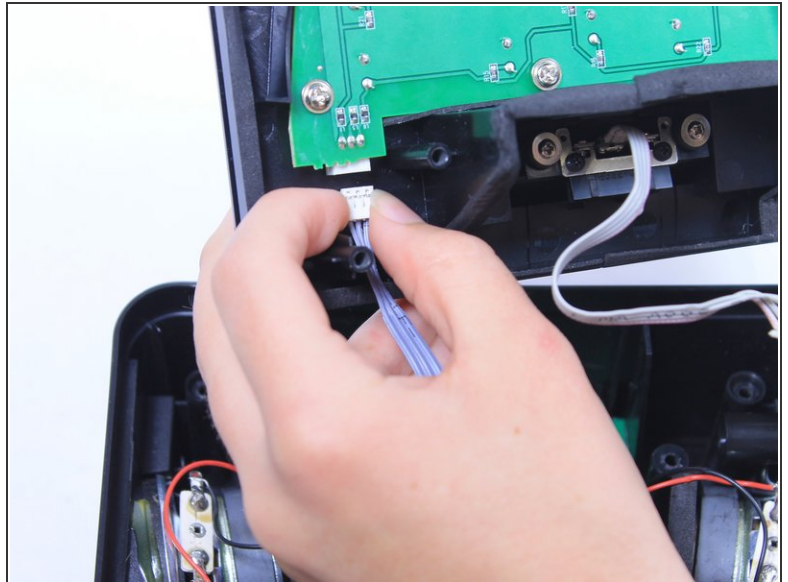
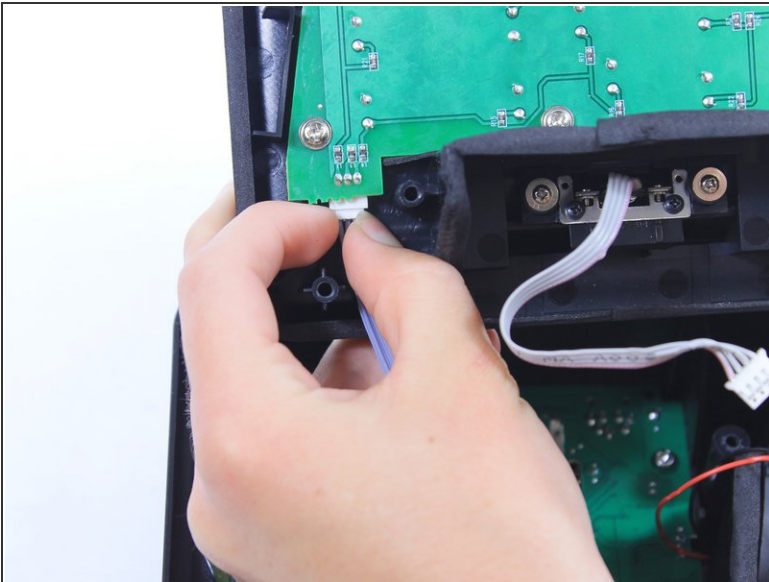
- [Phillips #2 Screwdriver](#) (1)
  - [iFixit Opening Tools](#) (1)
-

## Step 1 — Motherboard



- Grip the white ribbon cable connector that attaches the lightning cable to the middle of the central circuit board located in the bottom of the clock. Pinch and pull straight up to detach the cable.

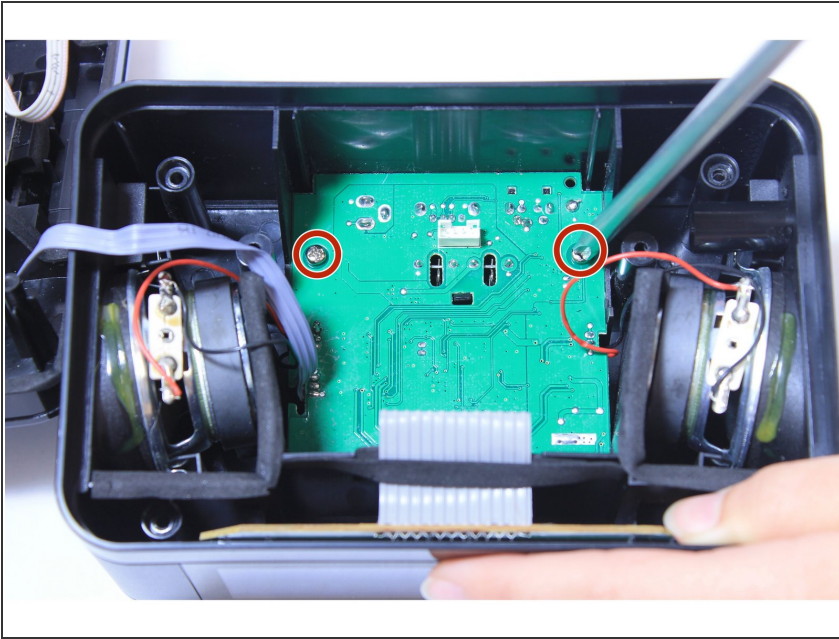
## Step 2



- Remove the white ribbon connector that connects the central circuit board to the circuit board attached to the top of the clock by gripping it on both sides and pulling it straight away from the board.

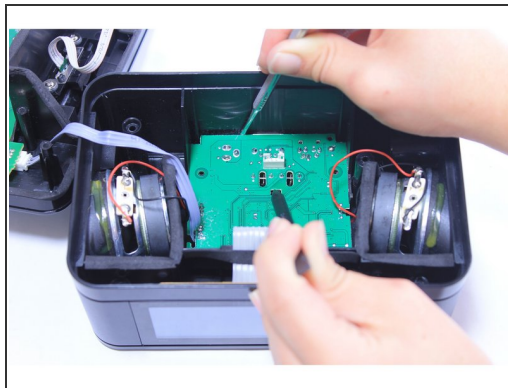
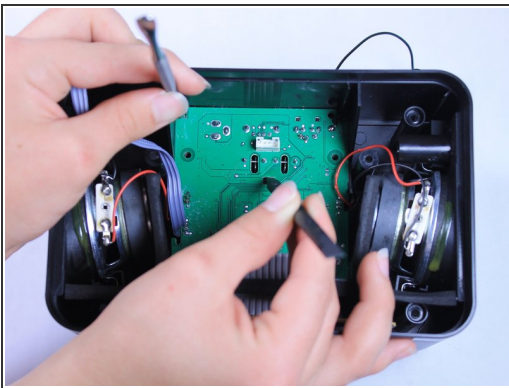


### Step 3



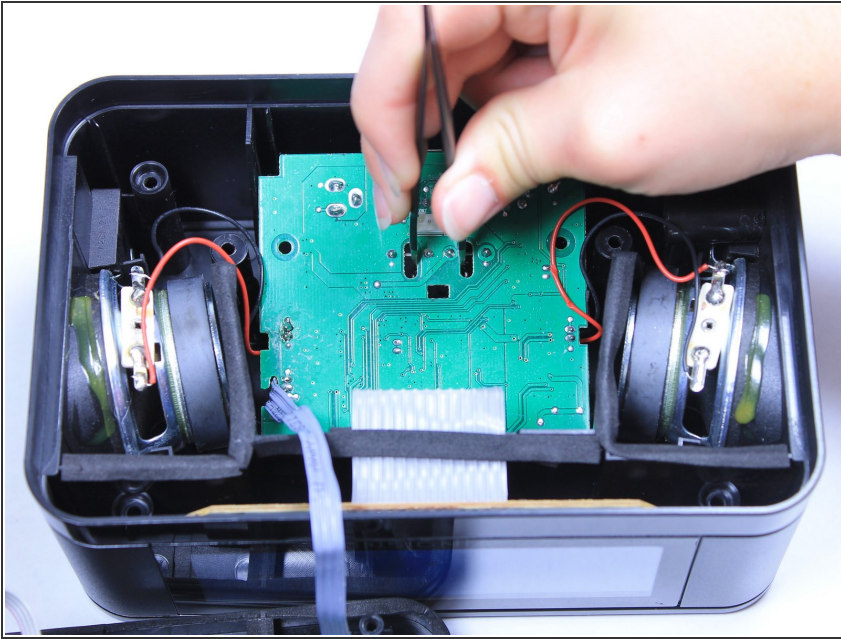
- Unscrew the two 10mm screws from the bottom circuit board.

### Step 4



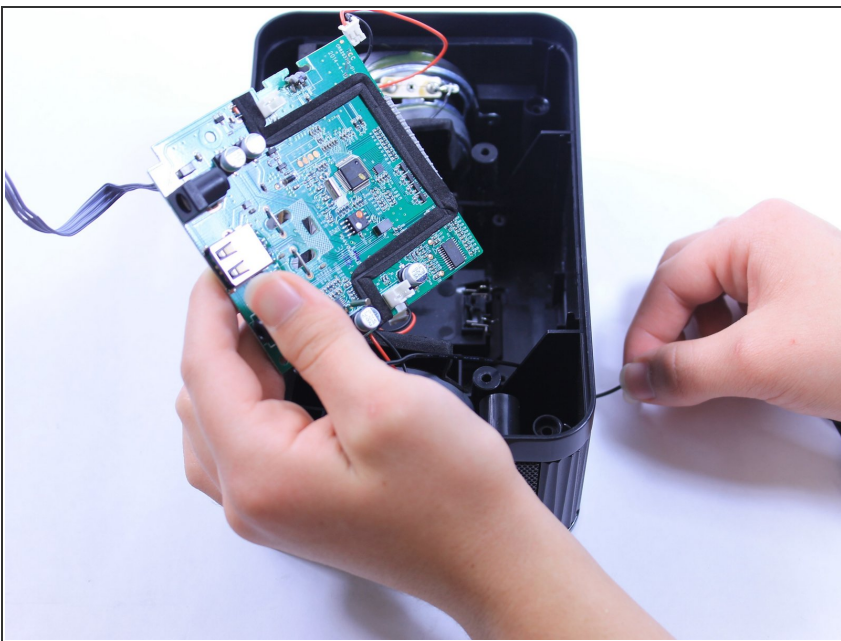
- Use the narrow end of a plastic spudger to pull back the clip in the center of the board.
- At the same time, pry the circuit board up by wedging another spudger into the top left-hand corner of the board and working it along the back, pushing the edge of the board away from the back of the clock.
- ⓘ The black radio antenna, which is attached to the board and comes out of the back of the clock, will need to be pushed into the clock from the outside as the board is lifted up.

## Step 5



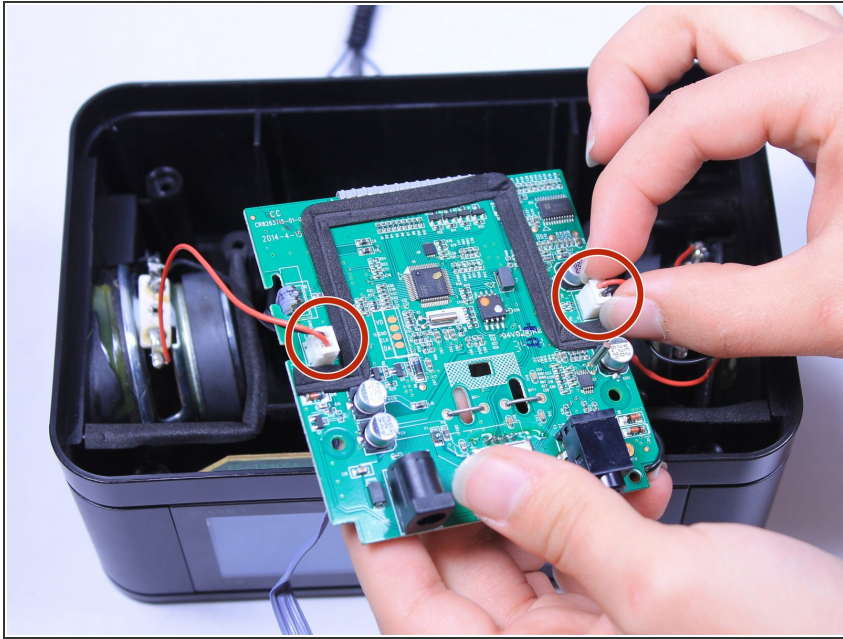
- Once the ports on the back of the circuit board are displaced and resting against the back of the clock, use a pair of tweezers to lift the circuit board up off of the bottom of the clock, continuing to feed the radio antenna through the side of the clock as the board lifts up.

## Step 6



- Pull the radio antenna the rest of the way through the side of the clock.

## Step 7



- Turn the circuit board over.
- Disconnect the two white connectors on the bottom of the circuit board by gripping the sides of each connector and pulling straight out.