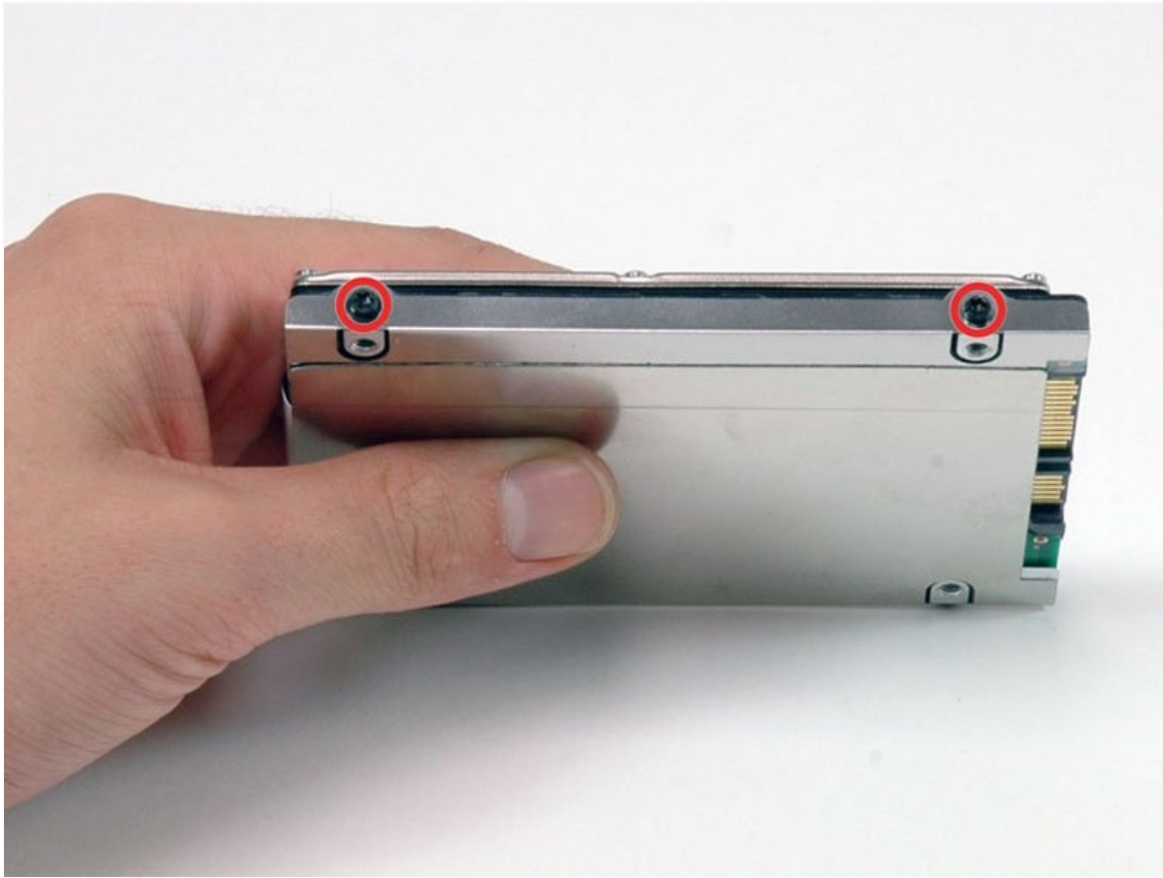




MacBook Core 2 Duo Hard Drive Replacement

You can install hard drives up to 9.5mm thick.

Written By: iRobot



INTRODUCTION

You can install hard drives up to 9.5mm thick.

TOOLS:

Coin (1)
Phillips #00 Screwdriver (1)
TR8 Torx Security Screwdriver (1)

PARTS:

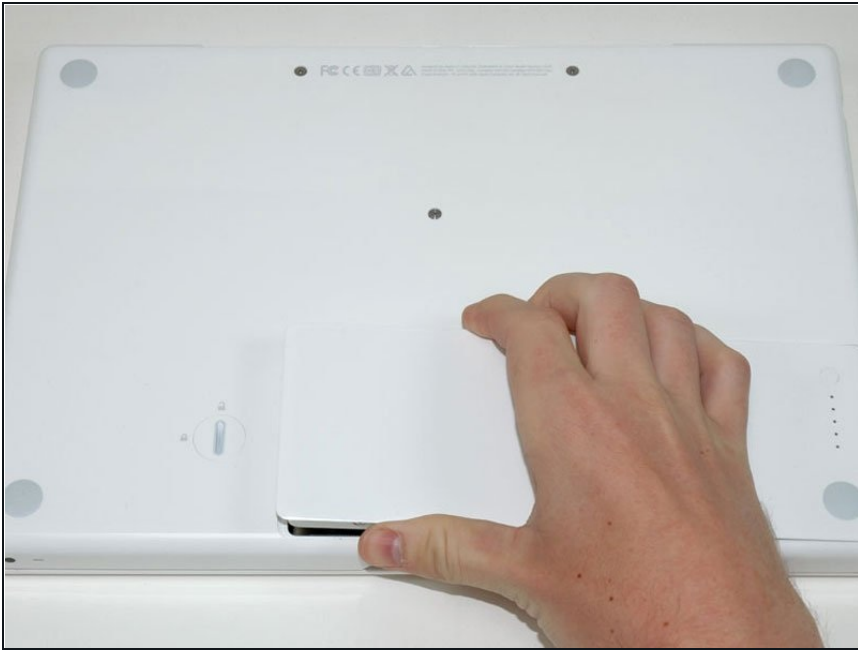
MacBook and MacBook Pro (Non-Retina) SSD Upgrade Kit (1)
250 GB SSD (1)
500 GB SSD (1)
1 TB SSD (1)
500 GB 5400 RPM 2.5" Hard Drive (1)
500 GB SSD Hybrid 2.5" Hard Drive (1)
1 TB 5400 RPM 2.5" Hard Drive (1)
MacBook Hard Drive Bracket (1)
Universal Drive Adapter (1)
750 GB 7200 RPM Seagate SATA Hard Drive (New) (1)
320 GB 5400 RPM 2.5" Hard Drive (1)

Step 1 — Battery



- Use a coin or spudger to rotate the battery-locking screw 90 degrees clockwise.

Step 2



- Lift the battery out of the computer.

Step 3 — Memory Cover



- Unscrew the three evenly-spaced Phillips screws from along the rear wall of the battery compartment.
- ★ The screws are captive to the metal memory cover so you cannot lose them.
- i Using The Flexible Extension sold by iFixit will help with this step.

Step 4



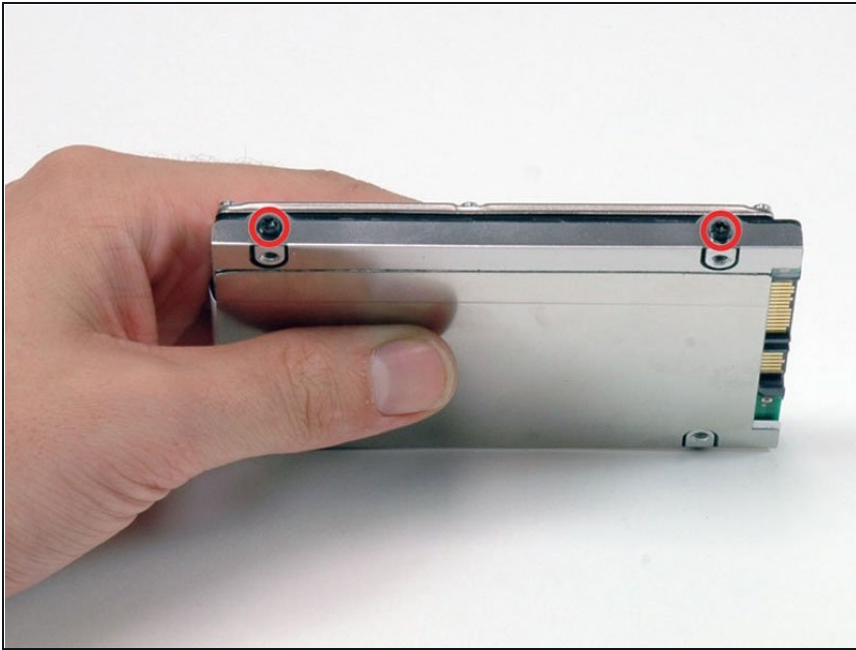
- Grasp the right end of the L-shaped memory cover, then pull it towards you so it clears the battery compartment opening.
- Lift the memory cover up and out of the computer.

Step 5 — Hard Drive



- Grasp the white plastic tab attached to the hard drive and pull it to the right, removing the hard drive from the computer.
- ☑ The hard drive goes back into its compartment with the label facing down.

Step 6 — Hard Drive



- Remove the two black T8 Torx screws securing the silver bracket to the hard drive.
- ⓘ There are two types of screws on this caddy: one with a flange below the head of the screw, and one without. Make note that the screws without the flange go in the two holes closest to the SATA connector.

Step 7



- Rotate the hard drive and remove the two black T8 Torx screws on the other side of the drive.

Step 8



- Lift the silver metal hard drive bracket off the hard drive.
- ★ You'll need to transfer this metal bracket to your new hard drive.
- ⓘ If you are installing a new hard drive, we have an [OS X install guide](#) to get you up and running.

To reassemble your device, follow these instructions in reverse order.