



# MacBook Pro 13" Unibody Early 2011 Logic Board Replacement

Internal Prerequisite.

Written By: Andrew Bookholt



# INTRODUCTION

Internal Prerequisite.

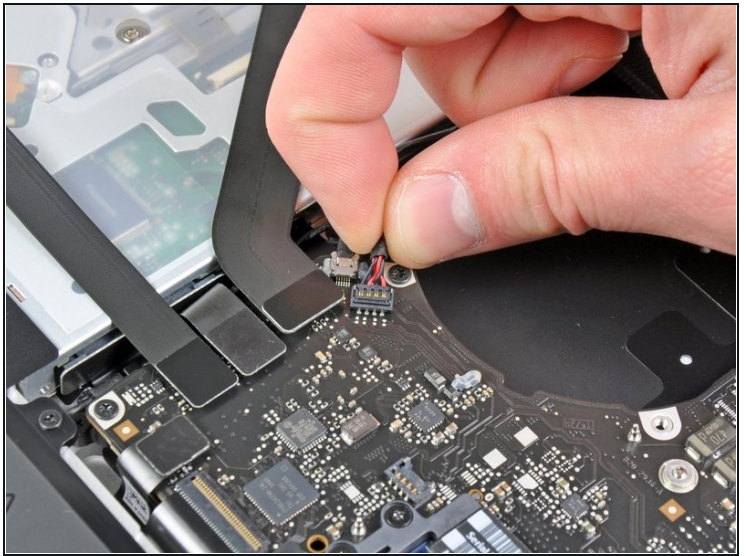
## TOOLS:

Spudger (1)

T6 Torx Screwdriver (1)

Phillips #00 Screwdriver (1)

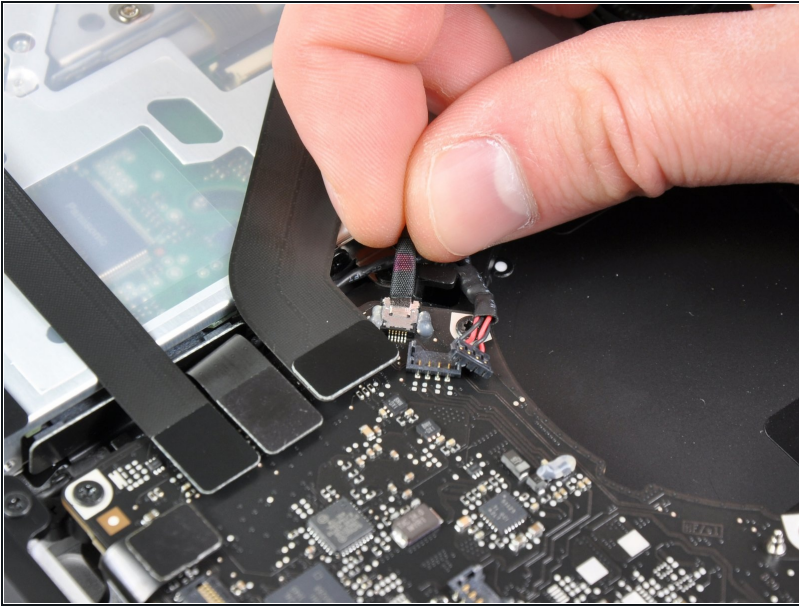
## Step 1 — Logic Board



- Use the tip of a spudger to pull the right speaker/subwoofer cable out from under the retaining finger molded into the upper case.
- Pull the right speaker/subwoofer cable upward to lift the connector out of its socket on the logic board.

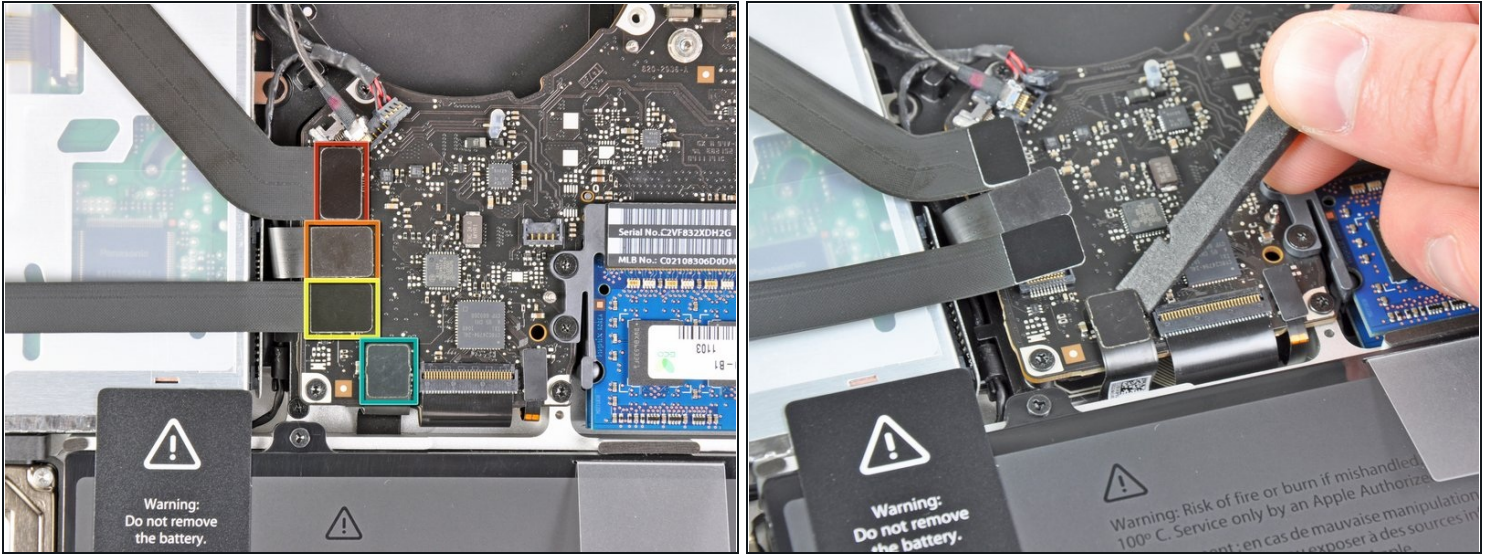


## Step 2



- Disconnect the camera cable from the logic board.
- ① The camera cable lifts straight away from the logic board. If your cable feels fragile, use a spudger to pry up on the small metal tabs on each side of the connector head to disconnect the cable.

### Step 3



- Disconnect the following four cables:
  - AirPort/Bluetooth cable
  - Optical drive cable
  - Hard drive cable
  - Trackpad cable
- ① To disconnect the cables, use the flat end of a spudger to pry their connectors up from the sockets on the logic board.

## Step 4



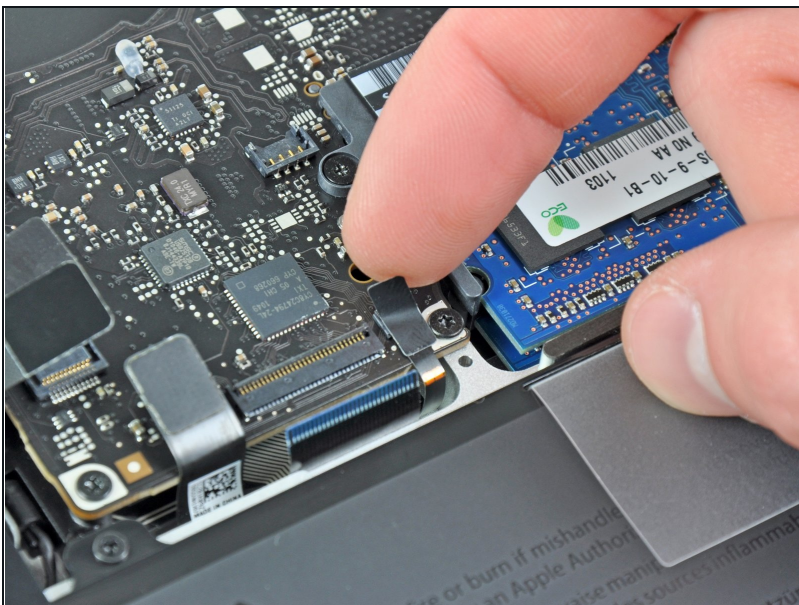
- Use your fingernail to flip up the retaining flap on the keyboard ribbon cable ZIF socket.

⚠ Be sure you are prying up on the hinged retaining flap, **not** the socket itself.

- Use the tip of a spudger to pull the keyboard ribbon cable out of its socket.

☑ The cable may be difficult to insert. If you are having trouble, temporarily attach a piece of tape to the cable to help you guide the cable into the socket.

## Step 5



- If present, remove the small strip of black tape covering the keyboard backlight cable socket.



## Step 6

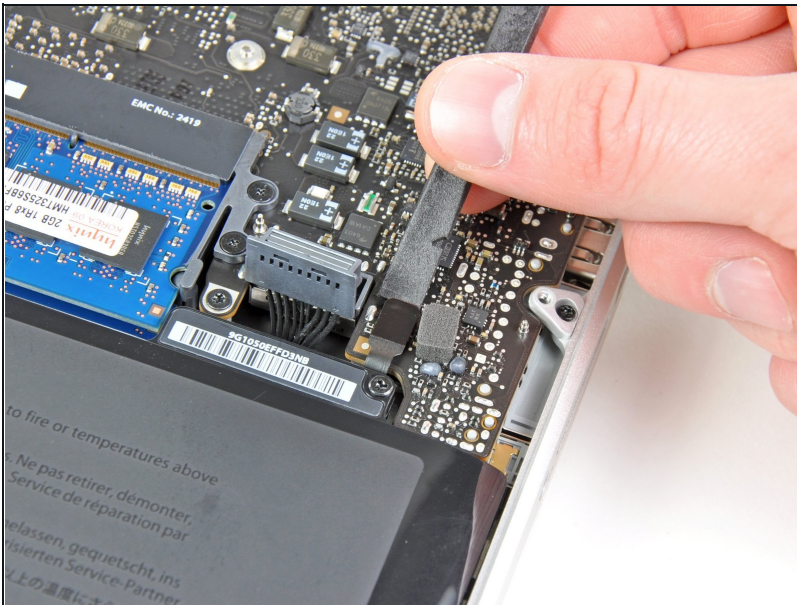


- Use the tip of a spudger or your fingernail to flip up the retaining flap on the keyboard backlight ribbon cable ZIF socket.

⚠ Be sure you are prying up on the hinged retaining flap, **not** the socket itself.

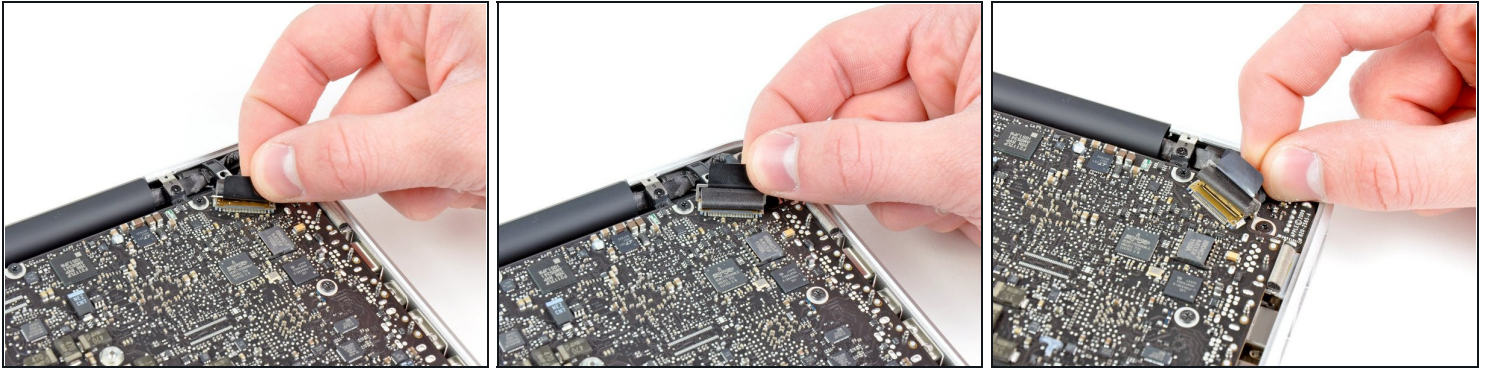
- Pull the keyboard backlight ribbon cable out of its socket.

## Step 7



- Use the flat end of a spudger to pry the sleep sensor/battery indicator connector up from its socket on the logic board.

## Step 8



- Grab the plastic pull tab secured to the display data cable lock and rotate it toward the DC-In side of the computer.
- Pull the display data cable straight out of its socket on the logic board.

⚠ Do not lift up on the display data cable, as its socket is very fragile. Pull the cable parallel to the face of the logic board.

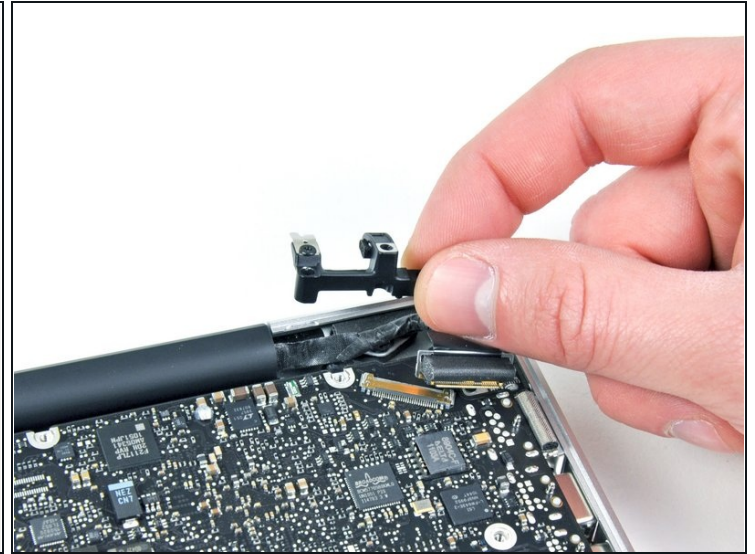
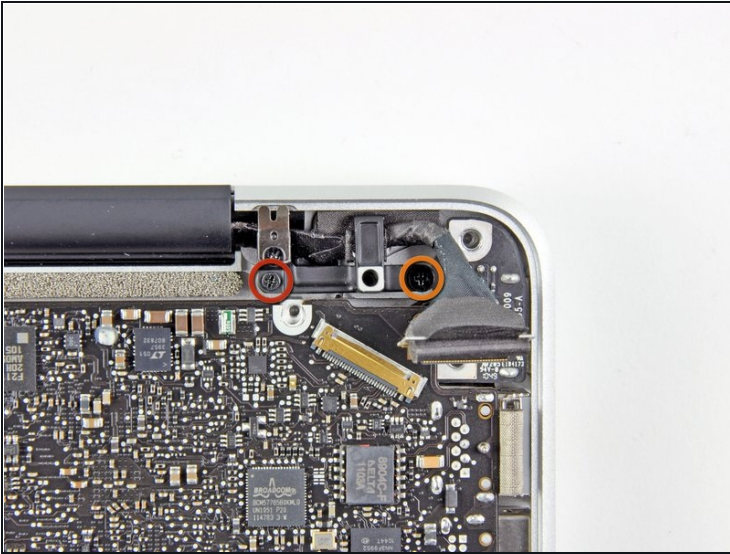
## Step 9



- Remove the following nine screws:
  - Five 3.6 mm T6 Torx screws
  - Two 4.3 mm T6 Torx screws
  - Two 7.2 mm T6 Torx screws
- ⓘ In some models the screws may be slightly shorter as follows:
  - Five 3.0 mm T6 screws
  - Two 3.6 mm T6 screws
  - Two 6.7 mm T6 screws

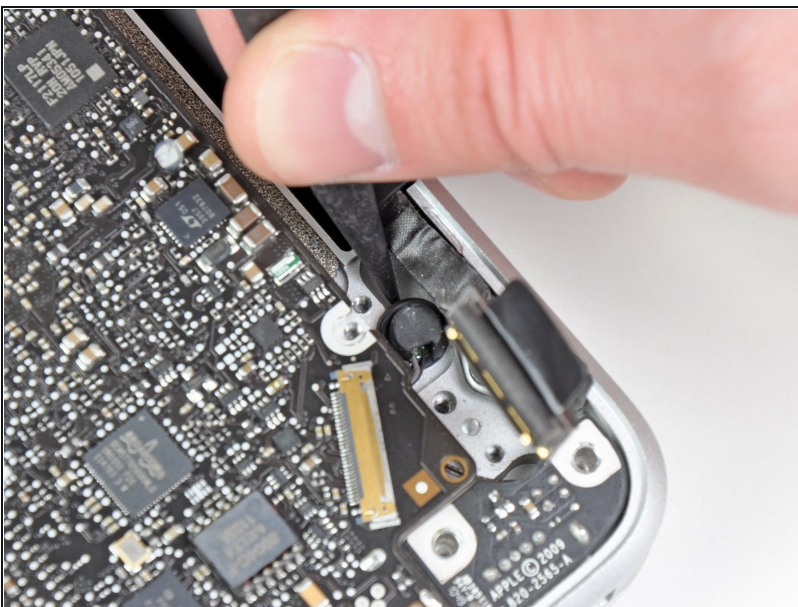


## Step 10



- Remove the following two screws:
  - One 8.6 mm Phillips screw
  - One 5.5 mm Phillips screw
- Remove the display data cable retainer from the upper case.

## Step 11



- Use the tip of a spudger to gently peel the microphone off the adhesive securing it to the upper case.



## Step 12



- Minding the many connectors near its edges, lift the logic board from the end nearest the optical drive.
- Without flexing the board, maneuver it out of the upper case, minding the flexible connection to the DC-In board that may get caught in the upper case.
- Remove the logic board.

---

To reassemble your device, follow these instructions in reverse order.