



Trolltech Greenphone Teardown

This is the teardown of the Trolltech Greenphone.

Written By: Ion



INTRODUCTION

This is the full teardown of Digia, Qt (Formally Trolltech) Linux based phone.

TOOLS:

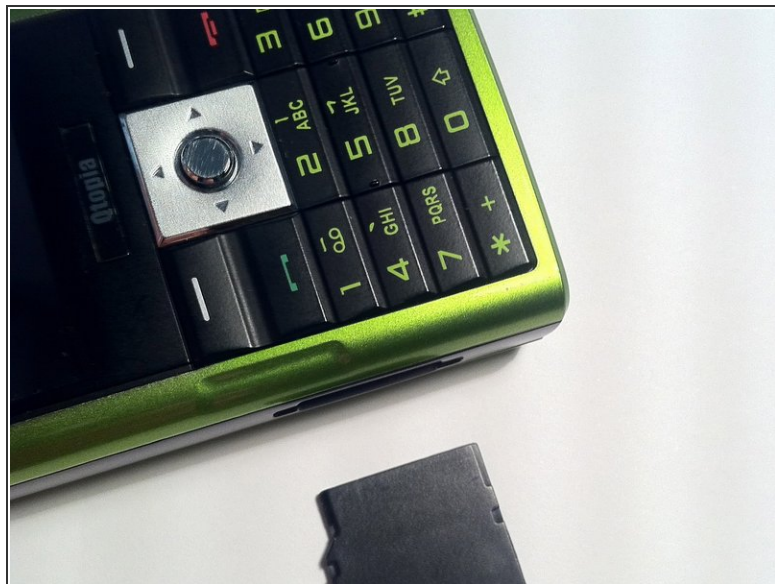
- [iFixit Opening Tools](#) (1)
 - [Spudger](#) (1)
 - [64 Bit Driver Kit](#) (1)
-

Step 1 — Trolltech Greenphone Teardown



- here is the Qtopia green phone.

Step 2



- first, remove the mini-SD card from the side of the phone.

Step 3



- then, remove the battery from the phone
- Unlocking the switch for the battery cover is a little difficult.

Step 4



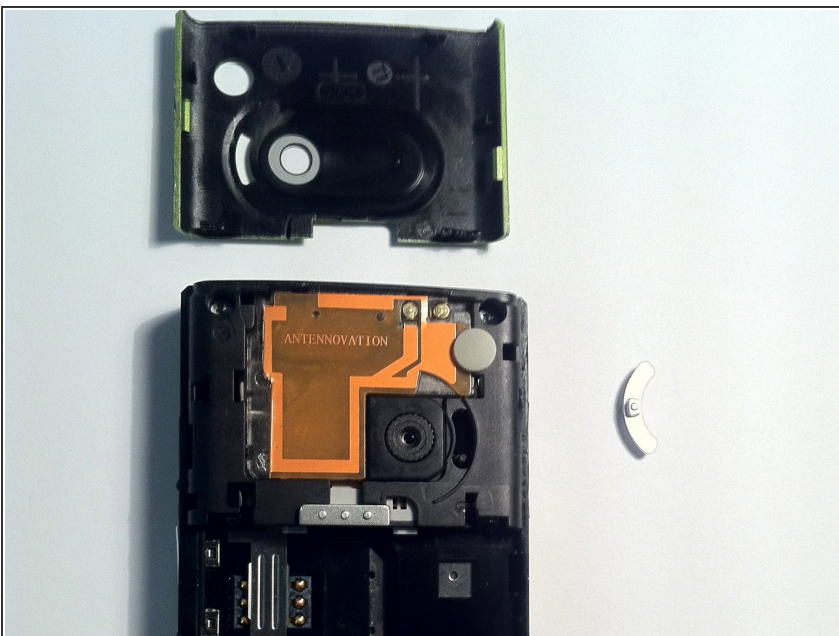
- when the battery is removed, remove the pencil from the device

Step 5



- this picture shows the two black plastic clips which you want to unlock if you would like to reach deeper into the interiors of this phone.
- the 2nd picture shows how to place the slotted pan head screwdriver
- to unlock them you have to turn the screwdriver around its own axis.
- when you unlock both, go with an iPod opening tool around the 3 other sides to unlock several other plastic clips, which should be easy to do

Step 6



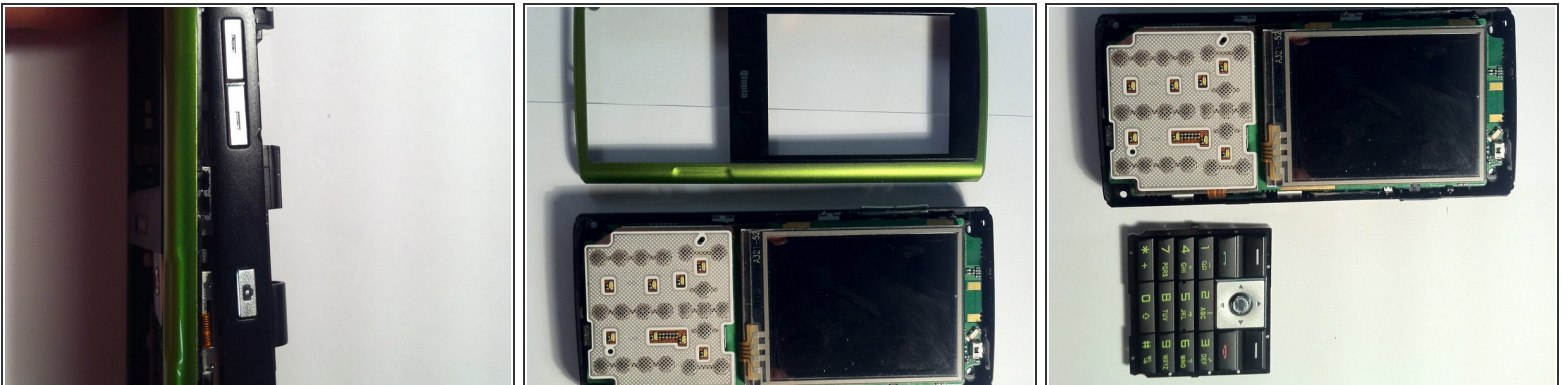
- now your phone should look like this.
- there is one separate little silver plastic switch for the camera lens.
- don't lose that

Step 7



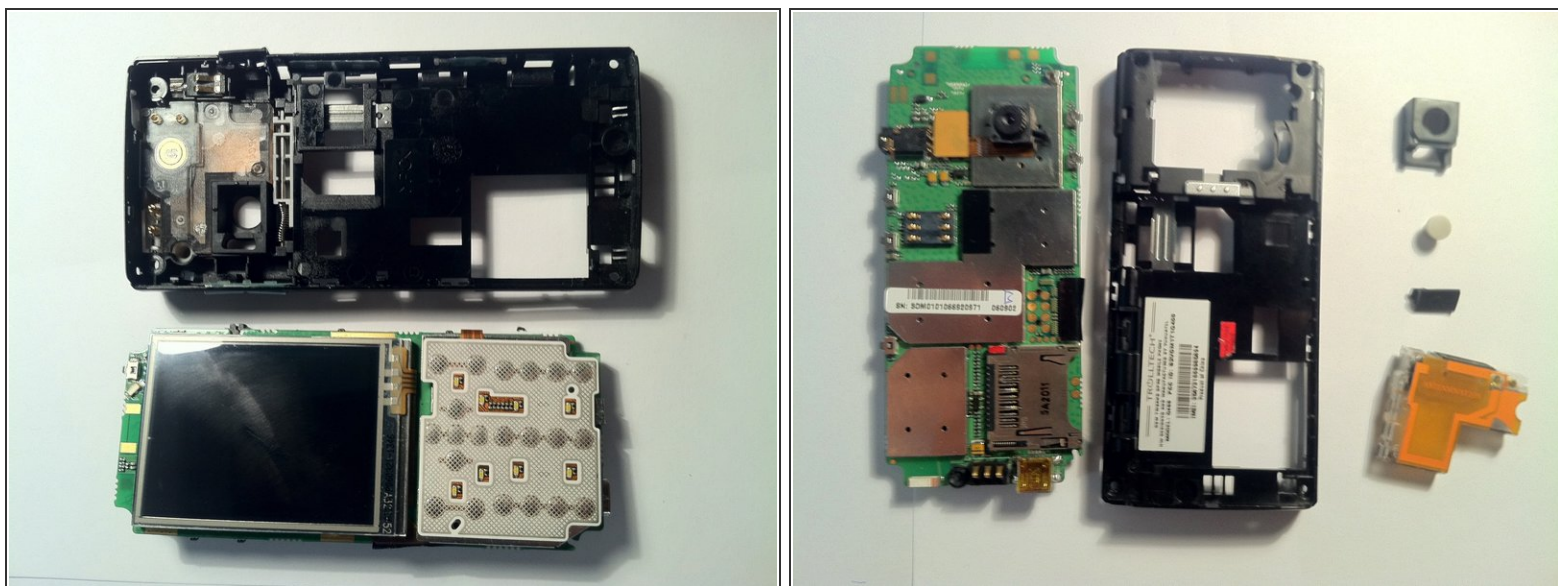
- now remove the only 4 screws in this froggy device.
- the both on the upper part
- and at the both at the bottom part
- and see them lie next to the device

Step 8



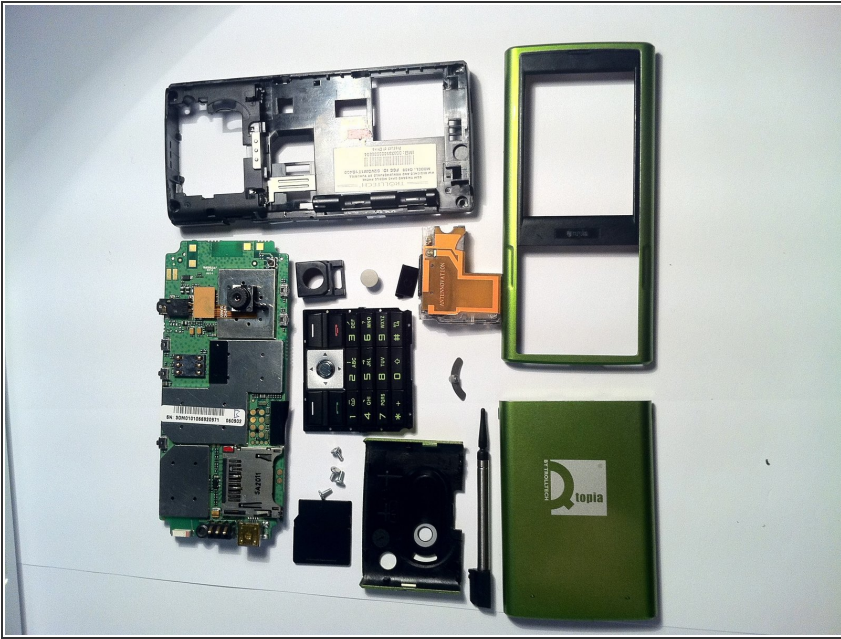
- now insert an ipod opening tool between the (green) front and the black stripe in the center of the phone
- be careful, the front is fragile
- as you are gone around its sides, you can simply disassemble the front panel without disconnecting anything.

Step 9



- now you are able to put the mainboard (the one and only), display and buttons (it appears that this is one huge part) and the black back/mid frame from each other
- its easy to remove the speaker/antenna and some plastic parts from the back panel
- the camera is glued on the board, but connected with an usual camera connector.
- all EMI shields are brazed onto the bord.

Step 10



- this was the whole thing. thank you for reading this far.
- fancy phone this is!