



ASUS D550MA-DS01 Battery Replacement

Is it time to replace your battery? This guide will show you how to remove the internal battery from your laptop.

Written By: Richard Johnson



INTRODUCTION

If your battery is worn or defective, this guide will show you how to replace your battery. The battery is located internally in the laptop and requires removal of the keyboard module for access.



TOOLS:

- [Phillips #1 Screwdriver](#) (1)
- [Spudger](#) (1)



PARTS:

- [Asus D550M, D550MA and F551MAV Replacement Battery](#) (1)

Step 1 — Keyboard Module



i Before you begin, be sure to turn off your laptop and unplug it from the outlet.

- Use a Philips #1 screwdriver to remove the nine screws from the back cover.

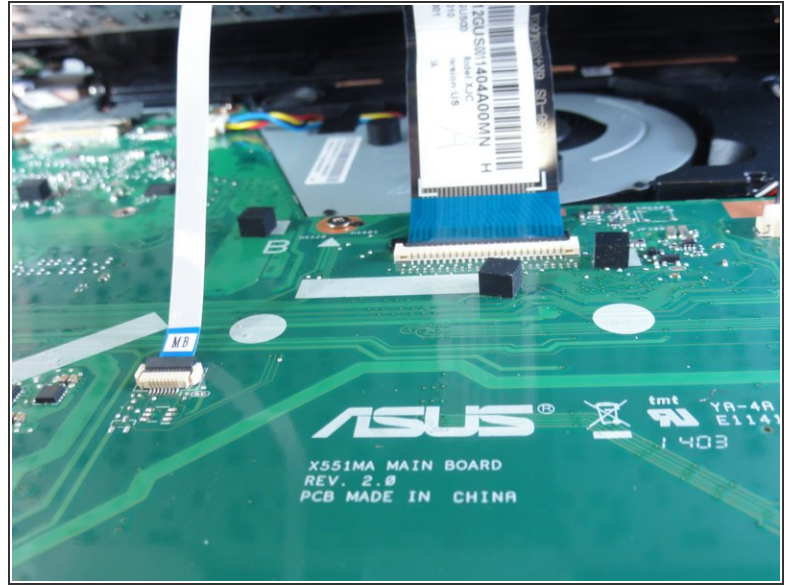
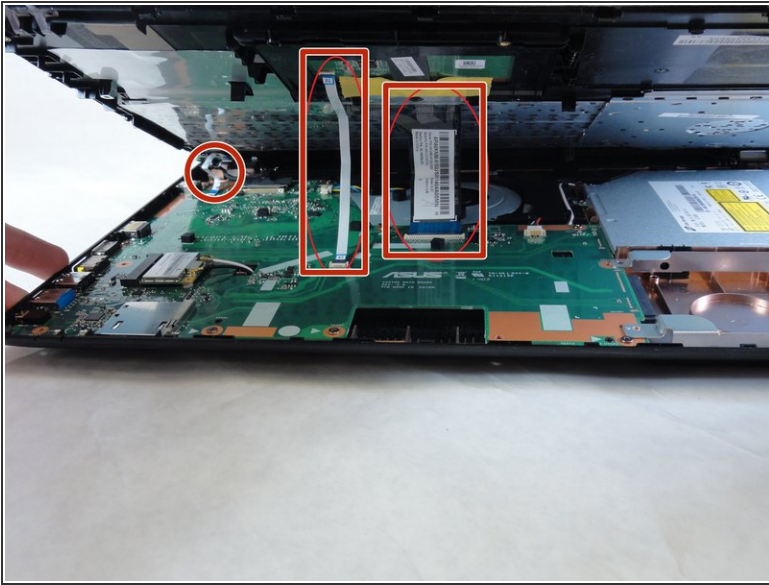
Step 2



- Turn the laptop over and open the display.
- Insert the flat edge of the spudger into the crease of the keyboard cover.
- While the spudger is in the crease, carefully pry open the casing by sliding the spudger along the edge.

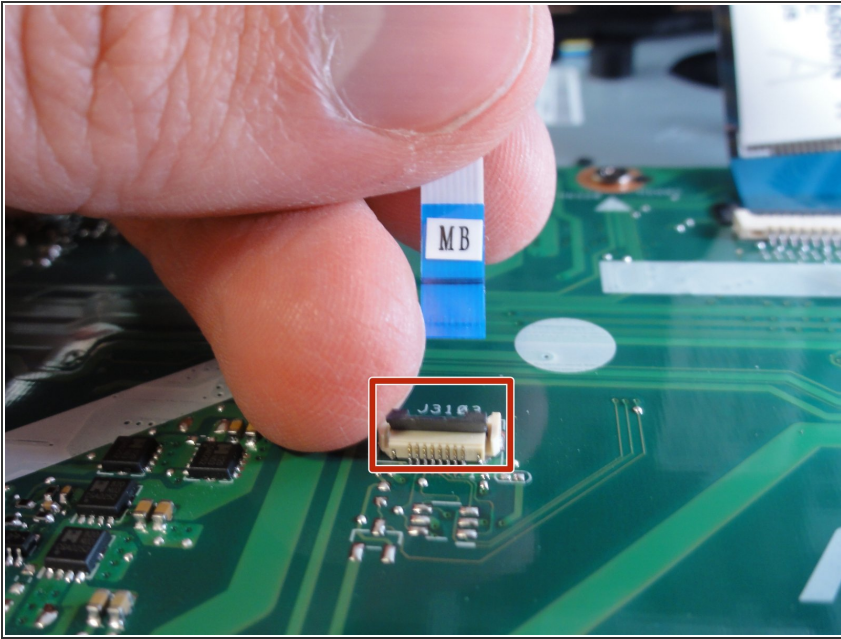
! Do not use excessive force to pry open the lid. You should hear each plastic clip snap open as you run the spudger along the edge.

Step 3



- ❗ Make sure that the entire cover has been released from the plastic clips.
- Slowly lift the cover open from the front of the laptop, but do not completely remove it.
- Note the locations of the three white and blue data cables connecting to the keyboard to the computer's main board.

Step 4



i If you are only replacing the battery, you can skip this step and the next. Shift the keyboard module away from the display and set it such that the fragile flex cables are not strained.

- Disconnect the three data cables from the motherboard.

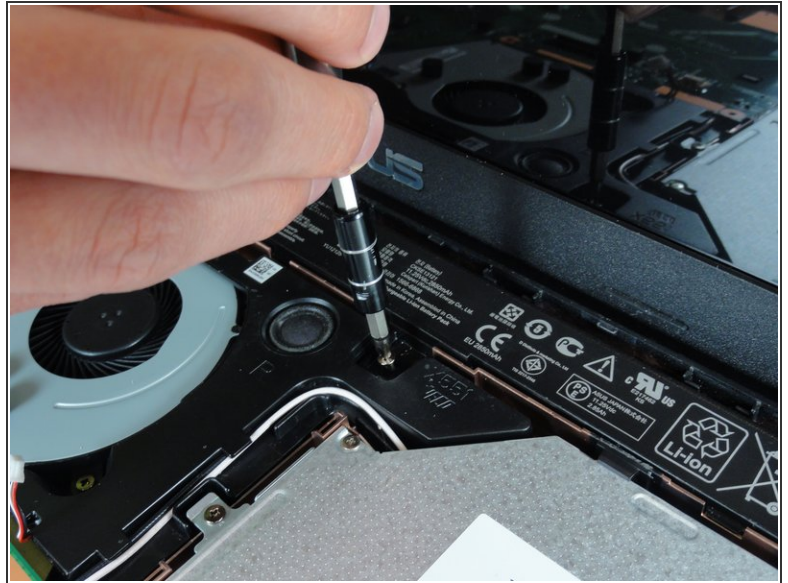
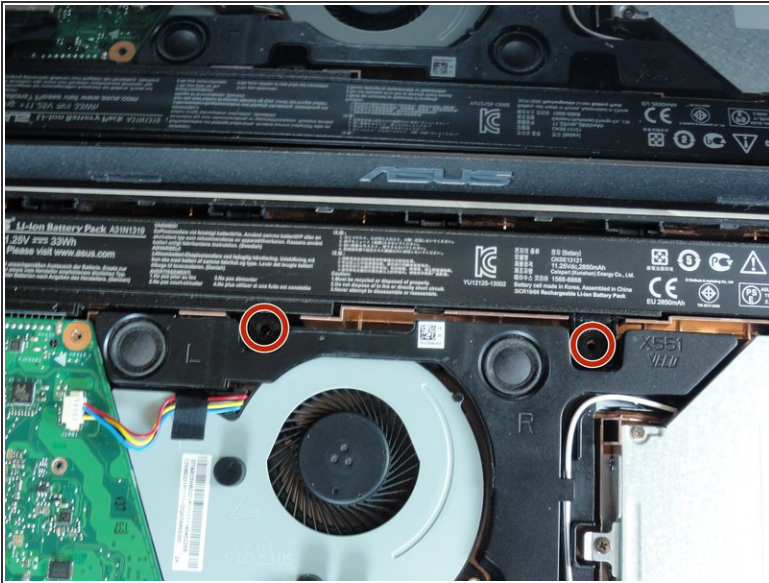
i To unlock a [ZIF connector](#), use the tip of a spudger or your fingernail to flip up the small, hinged locking flap. Carefully slide the unlocked cable out of the socket.


Step 5



- Remove the fully disconnected keyboard module from the laptop.

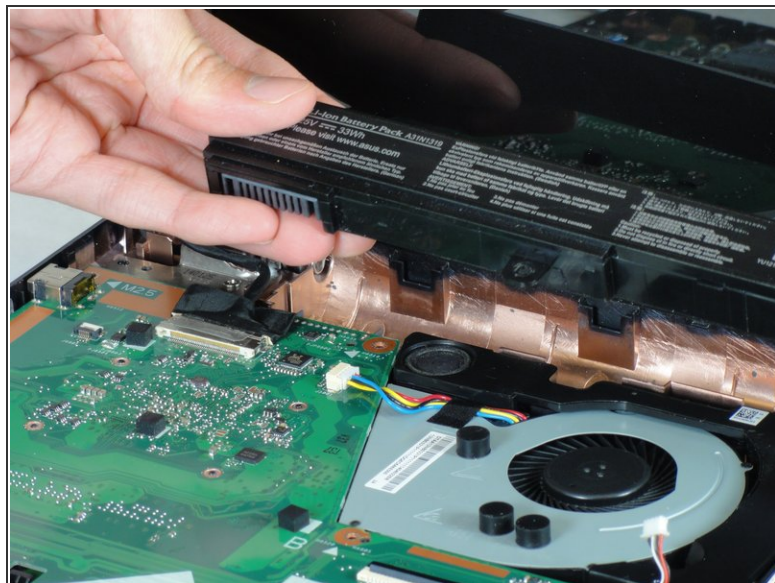
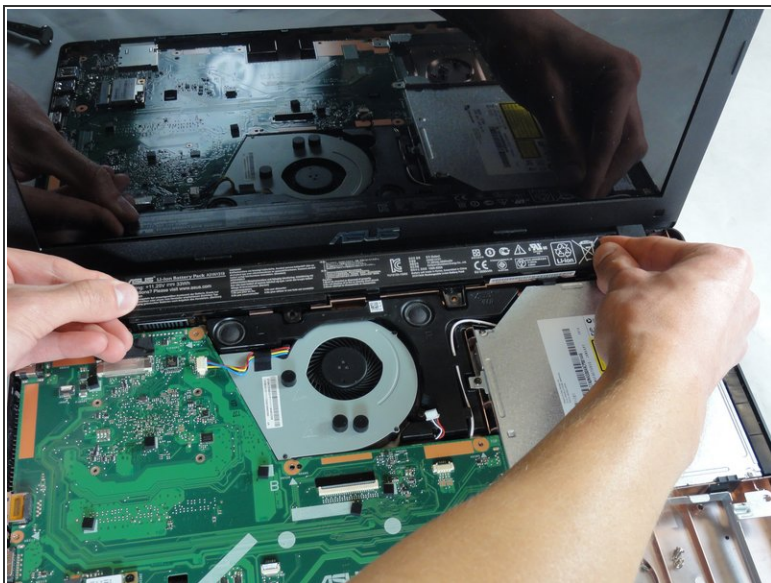
Step 6 — Battery



 Do not use any metal tool to pry any type of battery. Doing so can puncture or short the battery, resulting in damage or injury.

- Remove the two screws securing the battery to the laptop case with a Phillips #1 screwdriver.

Step 7



- Lift the battery out and remove it:
 - ❗ The battery is connected to the motherboard on the left side.
 - Use your fingertips to evenly grip the battery on the left and right sides of the battery.
 - Pull straight up to lift the battery out of its place.
 - ❗ Do not use excessive force or attempt to pry the battery with any tools. Doing so will result in damage to the laptop.

To reassemble your device, follow these instructions in reverse order.

For optimal performance, after completing this guide, [calibrate](#) your newly installed battery.

Take your e-waste to an [R2 or e-Stewards certified recycler](#).

Repair didn't go as planned? Try some [basic troubleshooting](#), or ask our [Answers community](#) for help.