



# Dell Inspiron 8600 Touch Pad Replacement

In this guide you will learn how to replace the...

Written By: John Nesthus



# INTRODUCTION

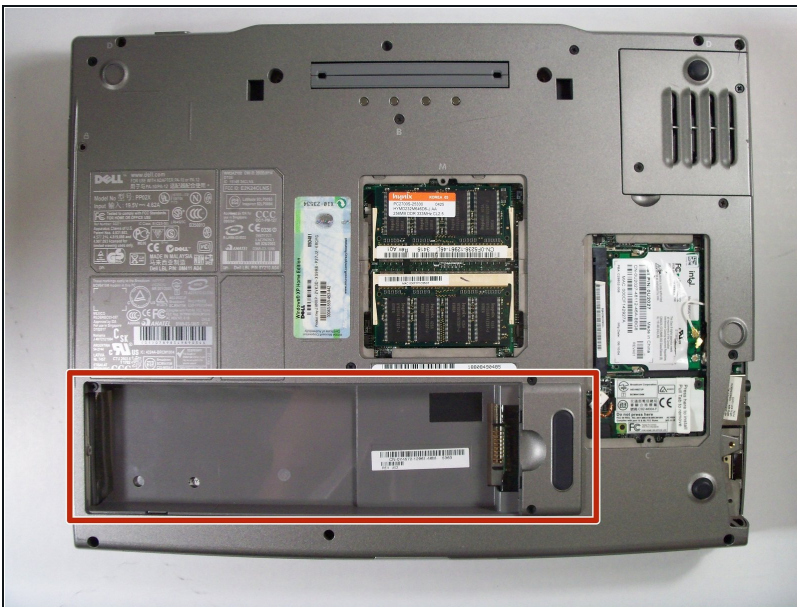
In this guide you will learn how to replace the touchpad on the Dell Inspiron 8600. The touchpad is used to scroll and click on links and items that are being presented on your screen without this function working properly your computer is ineffective

## TOOLS:

Flathead 3/32" or 2.5 mm Screwdriver (1)

Phillips #1 Screwdriver (1)

## Step 1 — Battery



- Remove the battery from the bottom left of the laptop as shown.

 **Remove the battery before operating on the computer to avoid electrocution.**

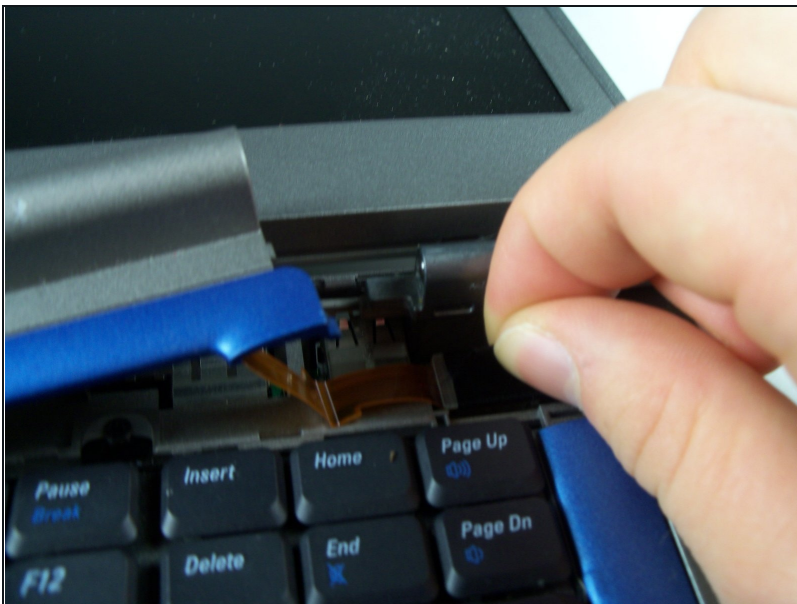
## Step 2 — Hinge Cover



- Insert a spudger into the notch at the far left side of the top blue panel and pry the hinge cover off.
- You may need to pry the other side off as well. You can do this by inserting the spudger between the hinge and the top cover.

⚠ Be careful of the wire attached to the underside of the hinge cover.

## Step 3



- Pull the small black tab on the right hand side of the laptop.
- You have now removed the hinge cover.

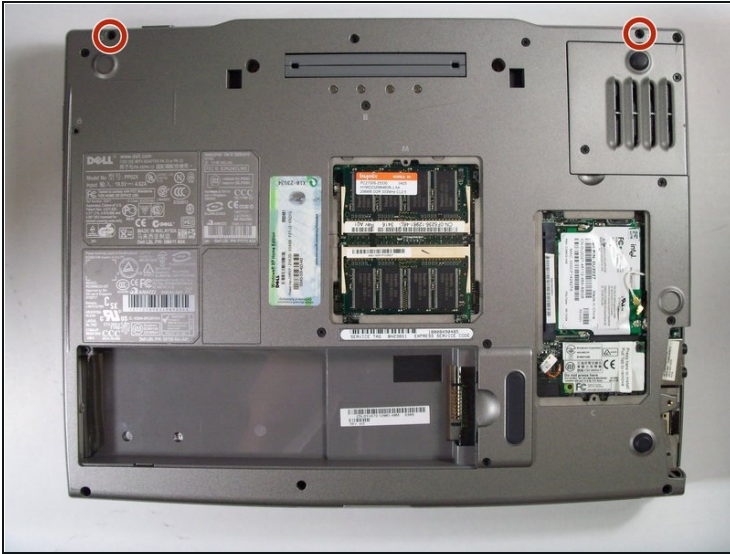


## Step 4 — Keyboard



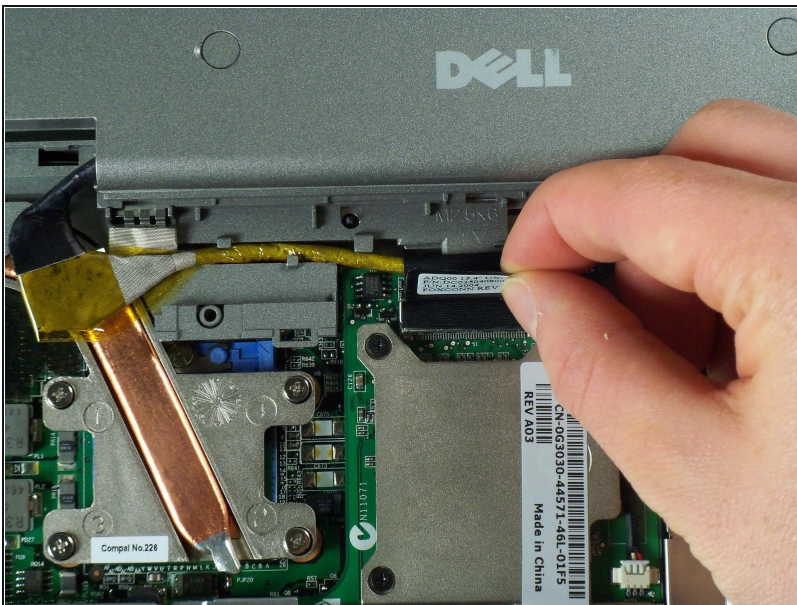
- Using the Phillips #1 remove the screws at the top of the keyboard as indicated.
- ⓘ Do not just lift up. There is a tab underneath the keyboard that is still connected to the mother board.
- You will need to pull out the white tab underneath the keyboard upwards until it pops out of its socket.
- ⓘ The keyboard should be easily removable at this point.

## Step 5 — Display Module



- Flip the laptop over and remove the indicated screws.
- Flip the laptop back over.
- Find the two places where the display module is attached to the base of the computer.

## Step 6



- Disconnect the video card from the display module by gently lifting upwards on the black tab.



## Step 7



- Lift the display module directly upwards from the base of the computer.

## Step 8



- Now remove the display module.

## Step 9 — Touch Pad



- Pop the upper case off, and replace.

---

To reassemble your device, follow these instructions in reverse order.