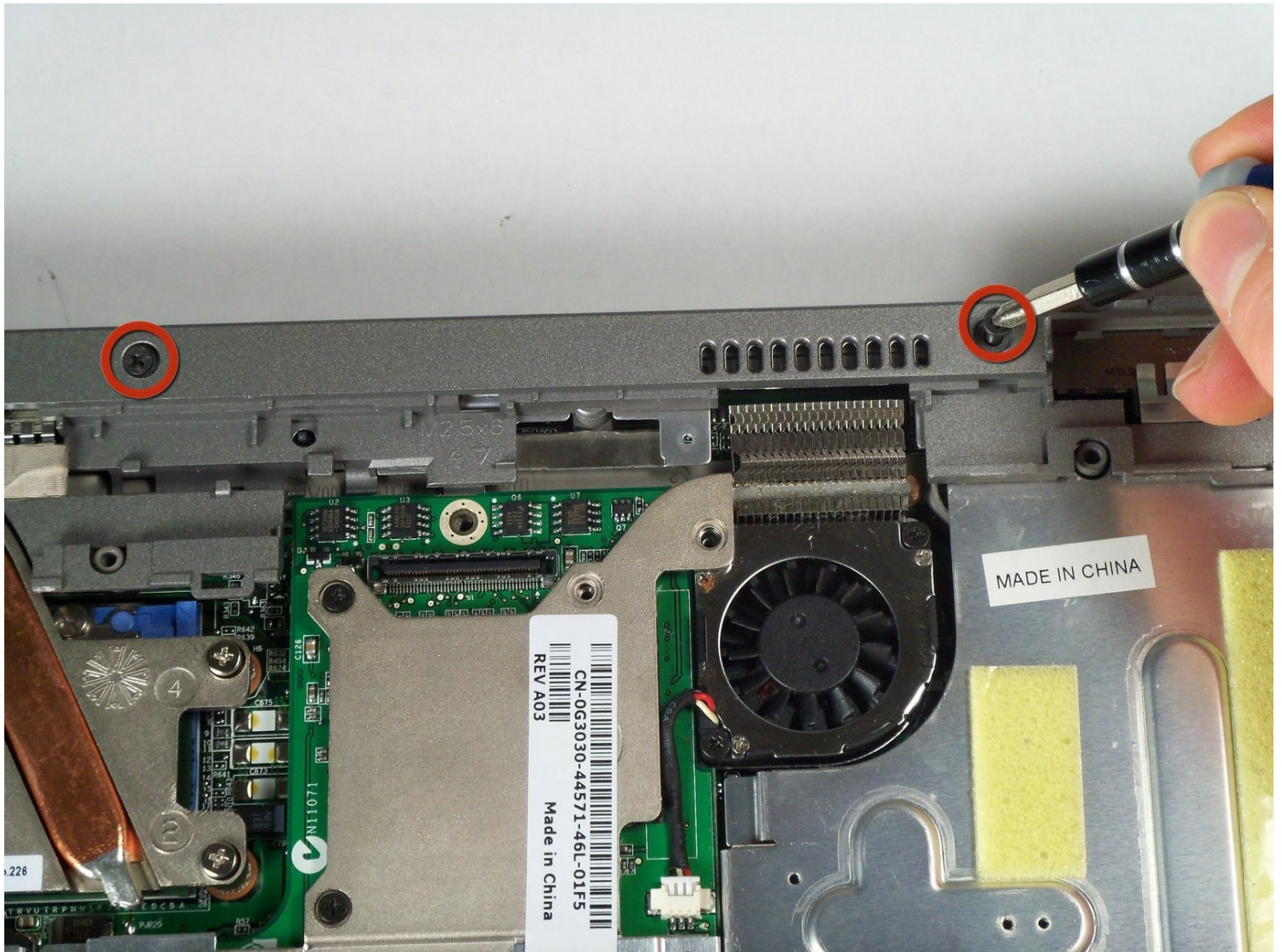




Dell Inspiron 8600 Lower Case Replacement

This guide will show you how to remove the...

Written By: John Nesthus



INTRODUCTION

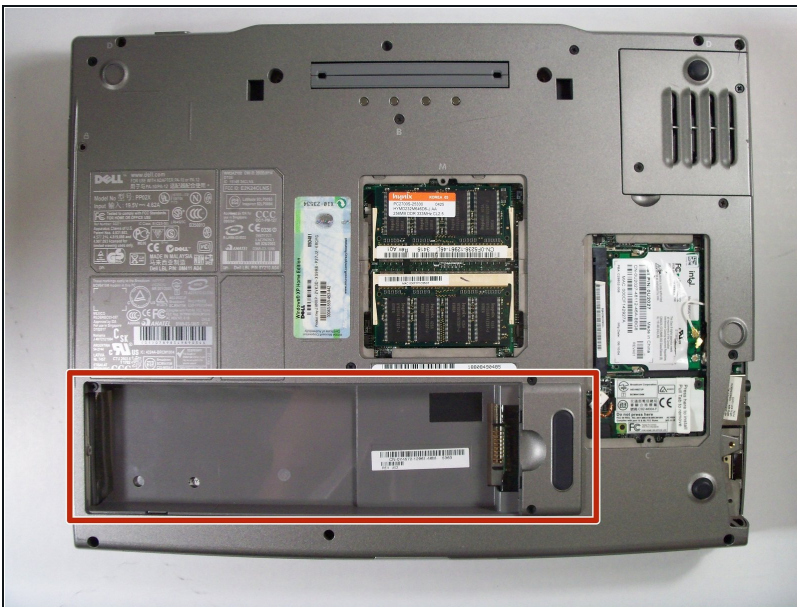
This guide will show you how to remove the lower case of a Dell Inspiron 8600 for replacement or repair. In this guide we'll show you how to remove critical components, how to correctly reassemble the device.

TOOLS:

Flathead 3/32" or 2.5 mm Screwdriver (1)

Phillips #1 Screwdriver (1)

Step 1 — Battery



- Remove the battery from the bottom left of the laptop as shown.

 **Remove the battery before operating on the computer to avoid electrocution.**

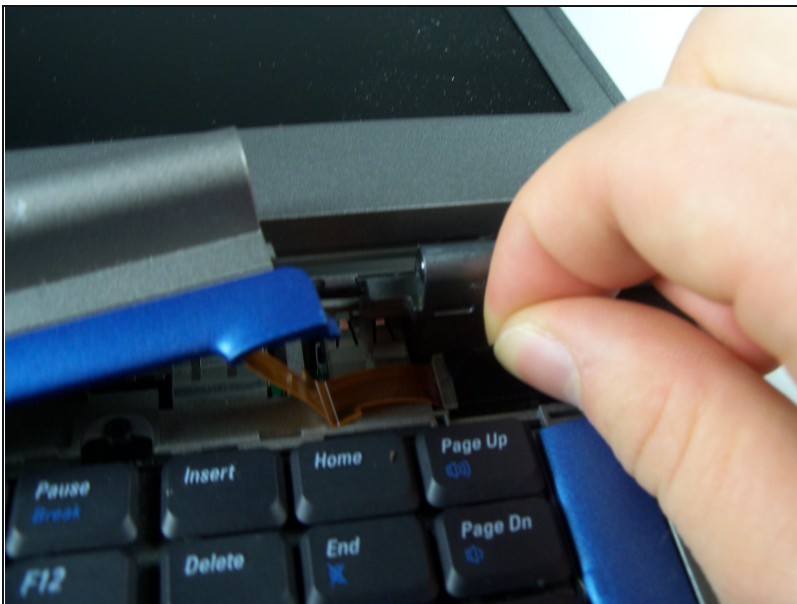
Step 2 — Hinge Cover



- Insert a spudger into the notch at the far left side of the top blue panel and pry the hinge cover off.
- You may need to pry the other side off as well. You can do this by inserting the spudger between the hinge and the top cover.

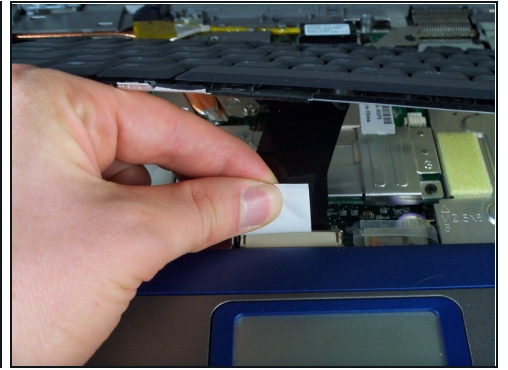
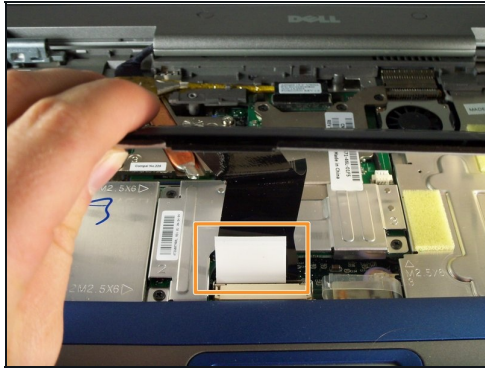
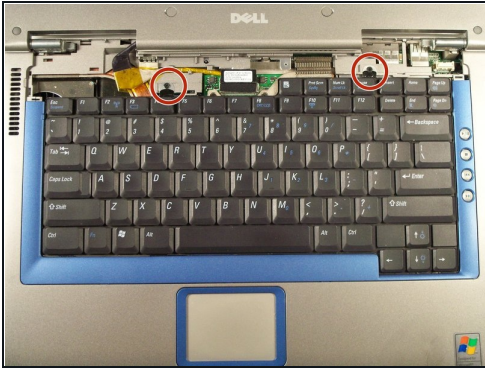
⚠ Be careful of the wire attached to the underside of the hinge cover.

Step 3



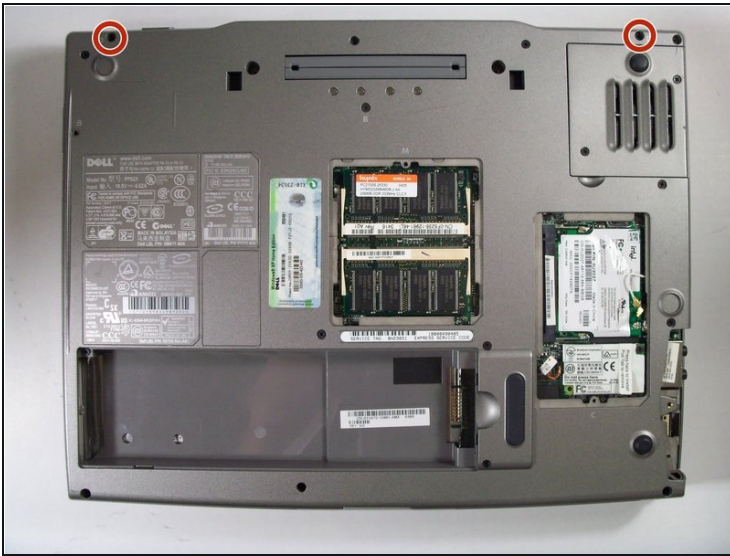
- Pull the small black tab on the right hand side of the laptop.
- You have now removed the hinge cover.

Step 4 — Keyboard



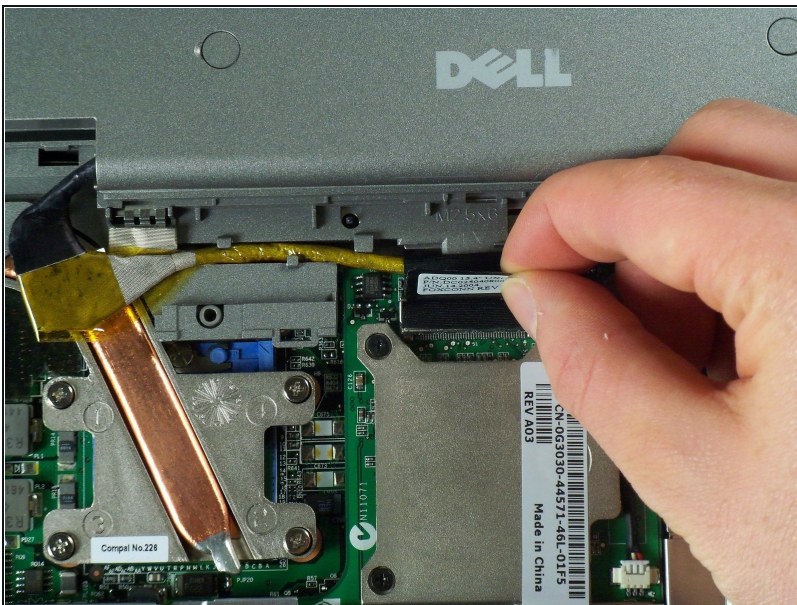
- Using the Phillips #1 remove the screws at the top of the keyboard as indicated.
- ① Do not just lift up. There is a tab underneath the keyboard that is still connected to the mother board.
- You will need to pull out the white tab underneath the keyboard upwards until it pops out of its socket.
- ① The keyboard should be easily removable at this point.

Step 5 — Display Module



- Flip the laptop over and remove the indicated screws.
- Flip the laptop back over.
- Find the two places where the display module is attached to the base of the computer.

Step 6



- Disconnect the video card from the display module by gently lifting upwards on the black tab.

Step 7



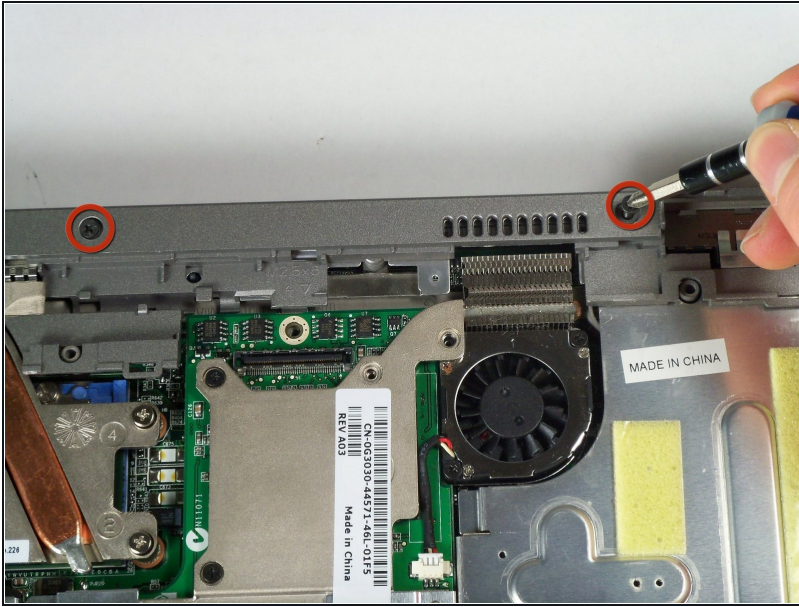
- Lift the display module directly upwards from the base of the computer.

Step 8



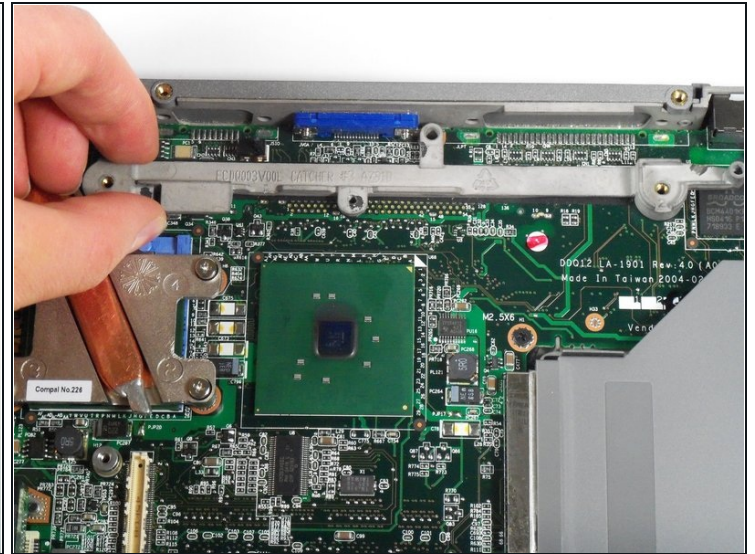
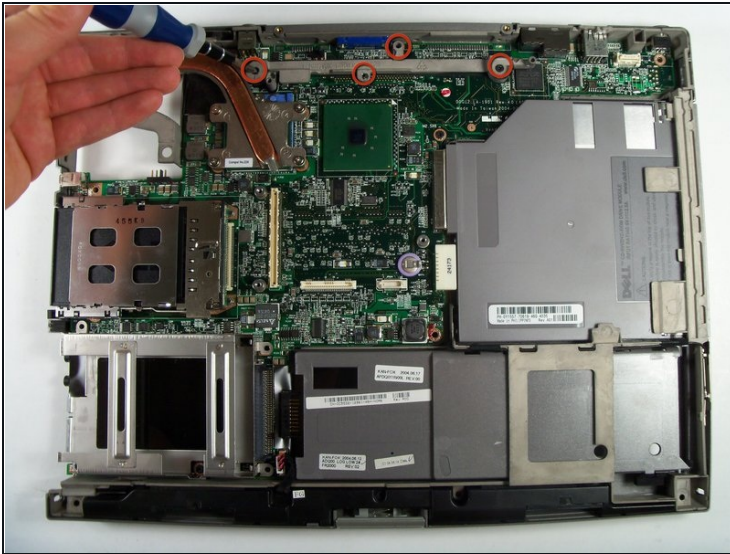
- Now remove the display module.

Step 9 — Lower Case



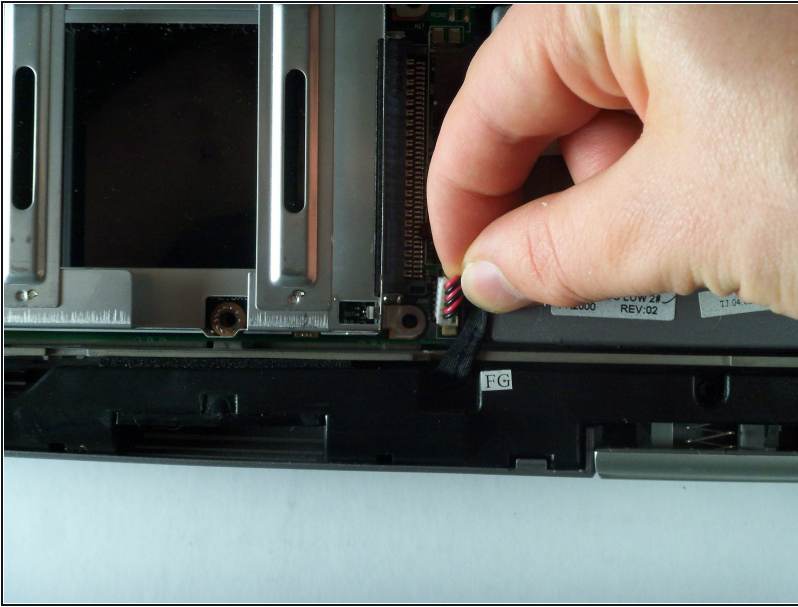
- Remove the two screws holding down the upper case with a Phillips #1 screwdriver.

Step 10



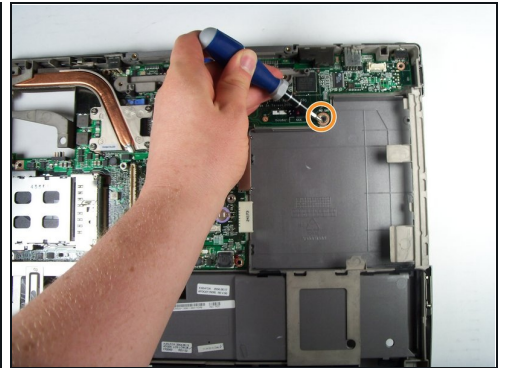
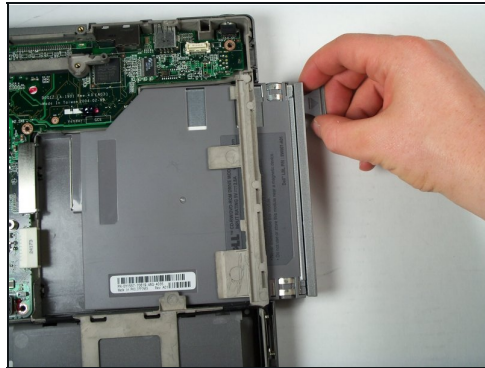
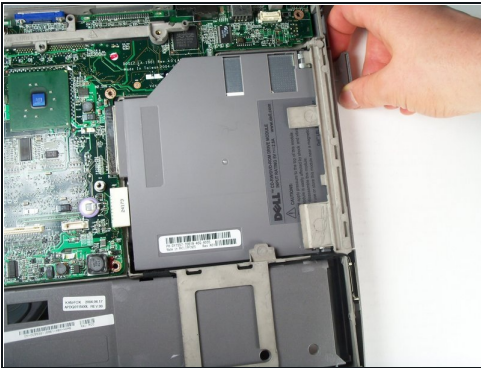
- Using a Phillips #1 screwdriver, remove four screws attaching the metal bar to the motherboard.
- Remove the metal bar which connects the motherboard to the lower case.

Step 11



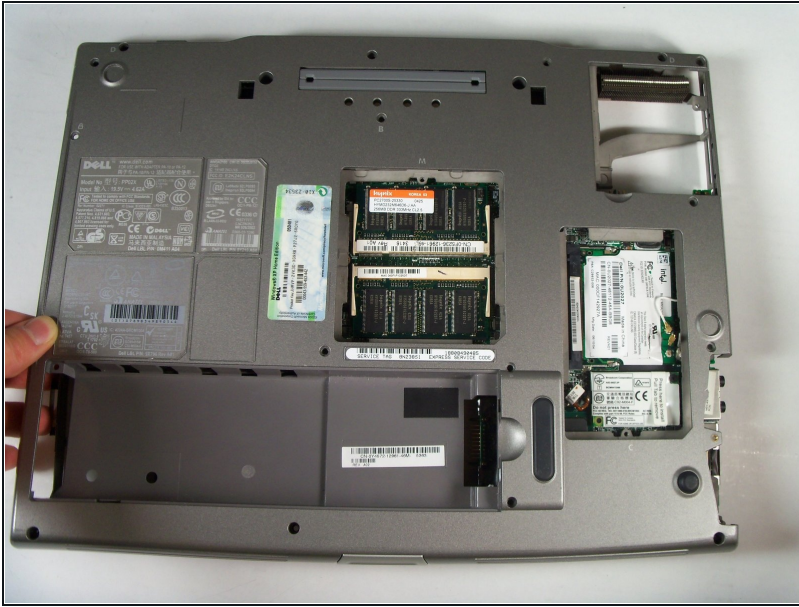
- Disconnect the optical disk drive by gently pulling upward on the plastic connector to prevent connection damage.

Step 12



- Remove the optical disk drive by pushing a small release button on the side of the laptop and then pulling it.
- This will uncover one final screw. Use the Phillips # 1 to remove the screw.

Step 13



- Now, pop off the lower case for repair or replacement.

To reassemble your device, follow these instructions in reverse order.