

The image shows a black electronic device, possibly a laser printer, with a prominent yellow warning label. The label contains text in multiple languages, including English, Korean, and Japanese, warning of laser radiation. The text on the label includes:

- CAUTION -** Invisible laser radiation when open. AVOID DIRECT EXPOSURE TO BEAM. CLASS 3B LASER PRODUCT. AVOID EXPOSURE TO THE BEAM. CLASS 3B LASER PRODUCT. AVOID EXPOSURE TO THE BEAM. CLASS 3B LASER PRODUCT.
- ATTENTION -** Invisible laser radiation when open. AVOID DIRECT EXPOSURE TO BEAM. CLASS 3B LASER PRODUCT. AVOID EXPOSURE TO THE BEAM. CLASS 3B LASER PRODUCT.
- PRECAUCION -** Invisible laser radiation when open. AVOID DIRECT EXPOSURE TO BEAM. CLASS 3B LASER PRODUCT. AVOID EXPOSURE TO THE BEAM. CLASS 3B LASER PRODUCT.
- VAROITUS -** Invisible laser radiation when open. AVOID DIRECT EXPOSURE TO BEAM. CLASS 3B LASER PRODUCT. AVOID EXPOSURE TO THE BEAM. CLASS 3B LASER PRODUCT.
- 주의 -** Invisible laser radiation when open. AVOID DIRECT EXPOSURE TO BEAM. CLASS 3B LASER PRODUCT. AVOID EXPOSURE TO THE BEAM. CLASS 3B LASER PRODUCT.
- 注意 -** Invisible laser radiation when open. AVOID DIRECT EXPOSURE TO BEAM. CLASS 3B LASER PRODUCT. AVOID EXPOSURE TO THE BEAM. CLASS 3B LASER PRODUCT.

The device is connected to various cables, and several screws are visible. A red rectangle highlights a specific area on the right side of the device.

Page 1 of 6



TOOLS:

- [Metal Spudger Set](#) (1)
- [Phillips #0 Screwdriver](#) (1)



PARTS:

- [HP LaserJet 1160 or 1320 Laser Assembly](#) (1)

Step 1 — Left Side Cover



- Pull on the two tabs on the back of the printer to release the left side cover.
- Remove the cover by rotating it towards the front of the printer.

Step 2 — Right Side Cover



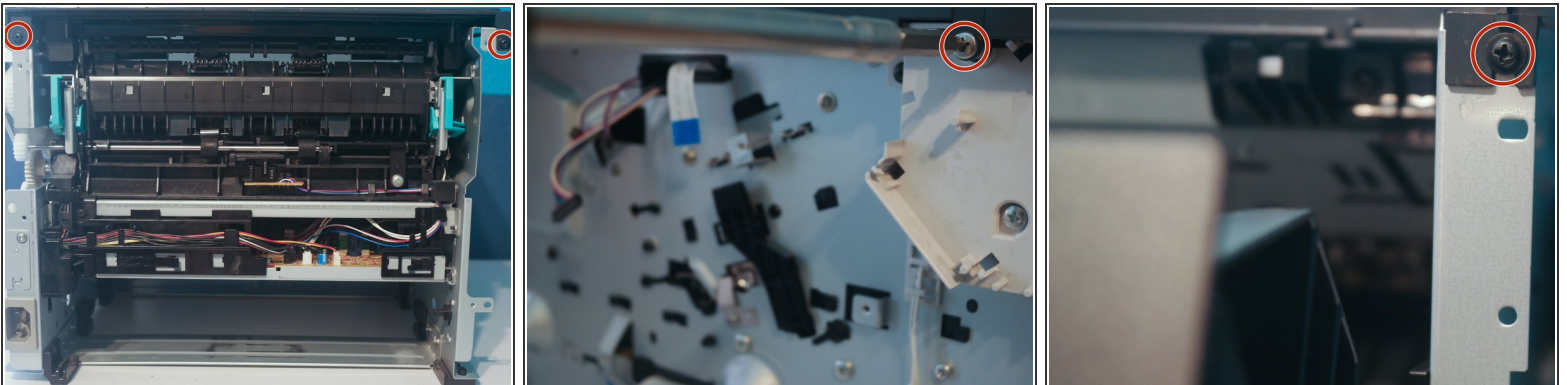
- With the printer turned so that the right side is facing upwards, use a metal spudger to disengage 3 tabs holding the right side cover in place.
- Lift the cover off of the printer.

Step 3 — Back Cover



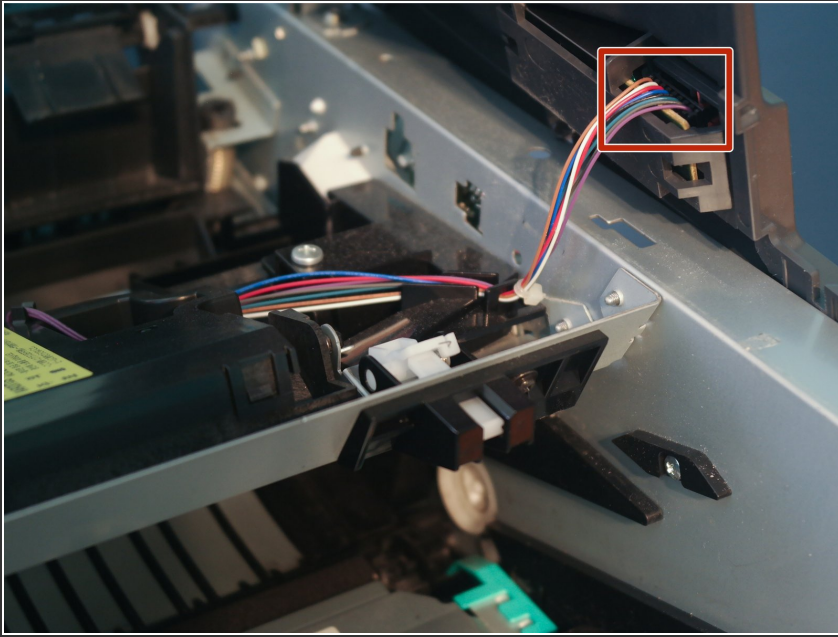
- Remove 4 screws on the back of the printer.
- Remove the back cover.

Step 4 — Top Cover



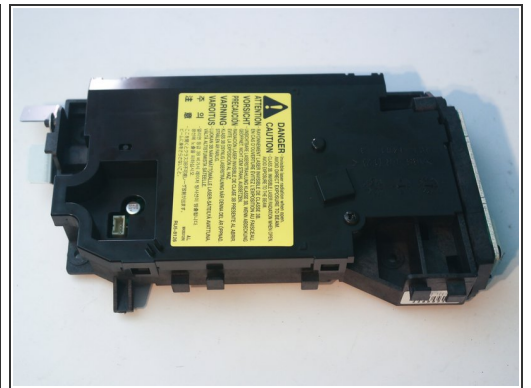
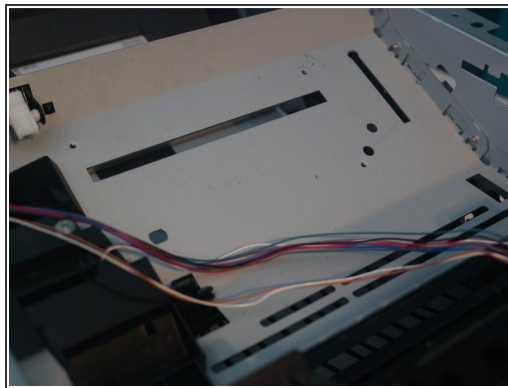
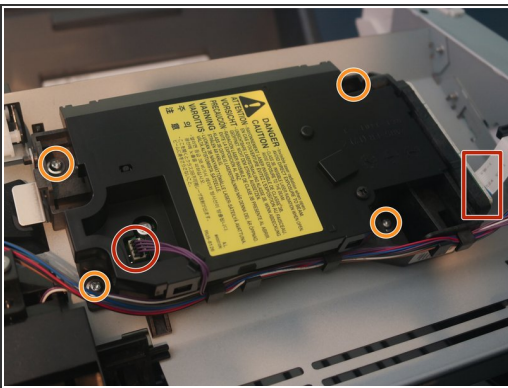
- Remove 2 screws on the back of the printer, one on the left, and one on the front.
- i* The second image shows the formatter removed, but it is not necessary to remove the formatter to replace the top cover.

Step 5 — Top Cover



- Disconnect the control panel cable and remove the top cover.

Step 6 — Laser Assembly



- Remove one cable from the top of the laser assembly and one cable from the right side of the laser assembly.
- Remove 4 screws from the laser assembly.
- Remove all cables from the cable clip on the side of the laser assembly and remove it from the printer.

To reassemble your device, follow these instructions in reverse order.

This document was generated on 2020-11-24 08:10:09 PM (MST).

