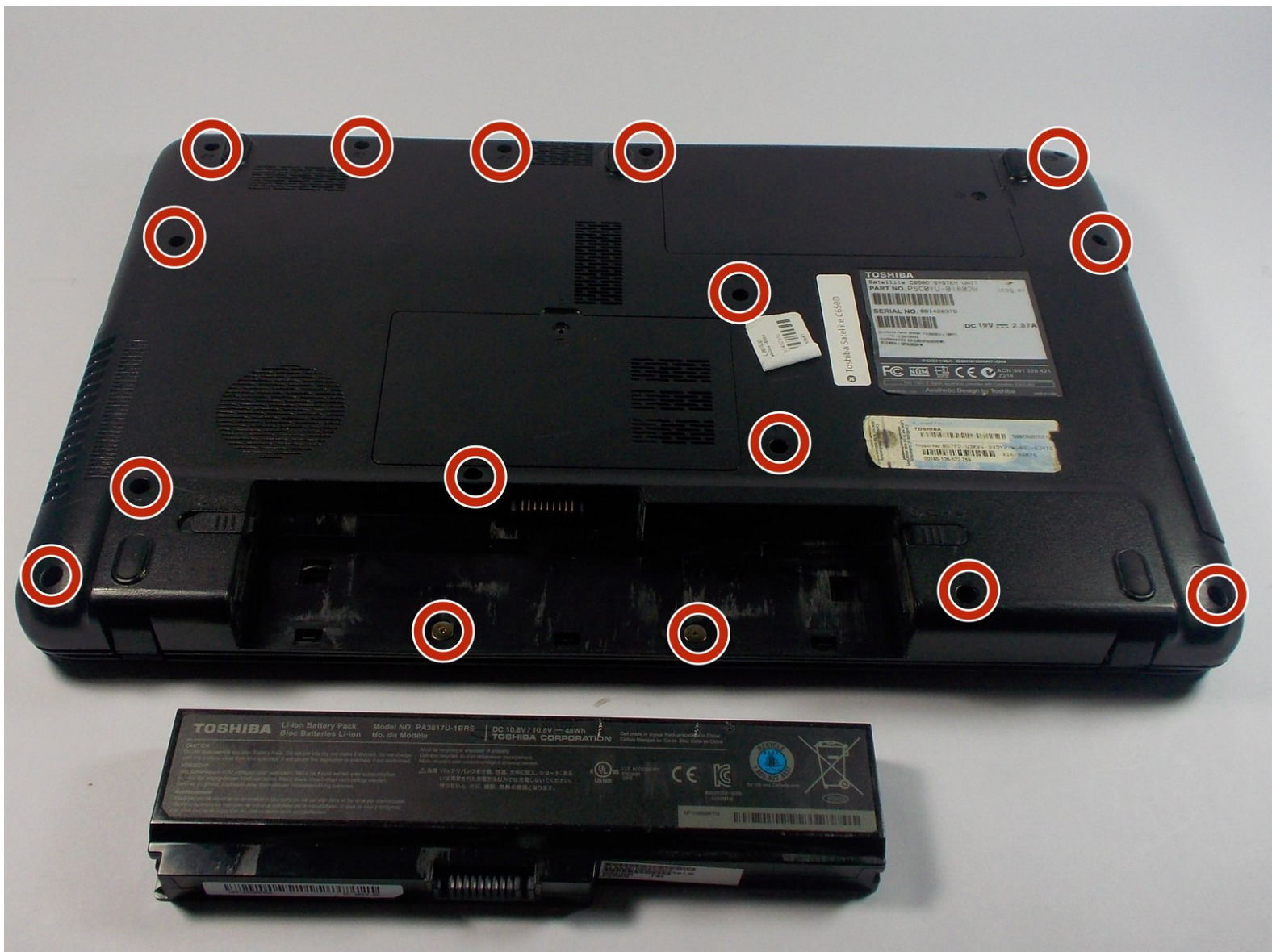




# Toshiba Satellite c650d Keyboard Replacement

This guide will provide steps for replacing the keyboard of a Toshiba Satellite C650D.

Written By: Brenna Callahan



## INTRODUCTION

If the keyboard is not working, it may need to be replaced. This guide contains instructions for replacing the keyboard of the Toshiba Satellite C650D.



### TOOLS:

- [Phillips #0 Screwdriver](#) (1)
- [Anti-Static Wrist Strap](#) (1)
- [Magnetic Project Mat](#) (1)
- [Spudger](#) (1)



### PARTS:

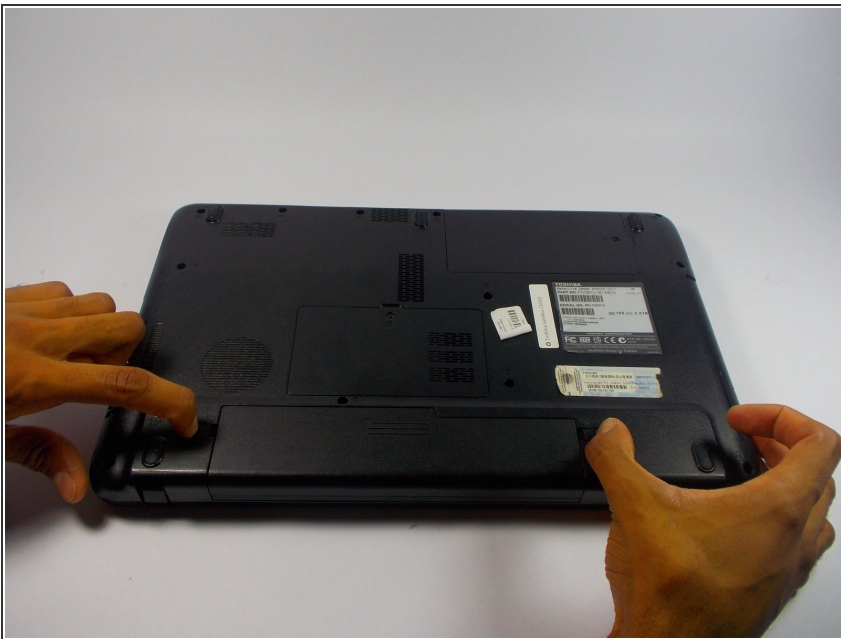
- [Toshiba Satellite C650D Replacement Keyboard](#) (1)

## Step 1 — Battery



- Unplug the laptop and turn it off.
- Flip the laptop upside down.
- Locate the battery on the underside of the laptop.

## Step 2



- Push the two latches away from the battery.

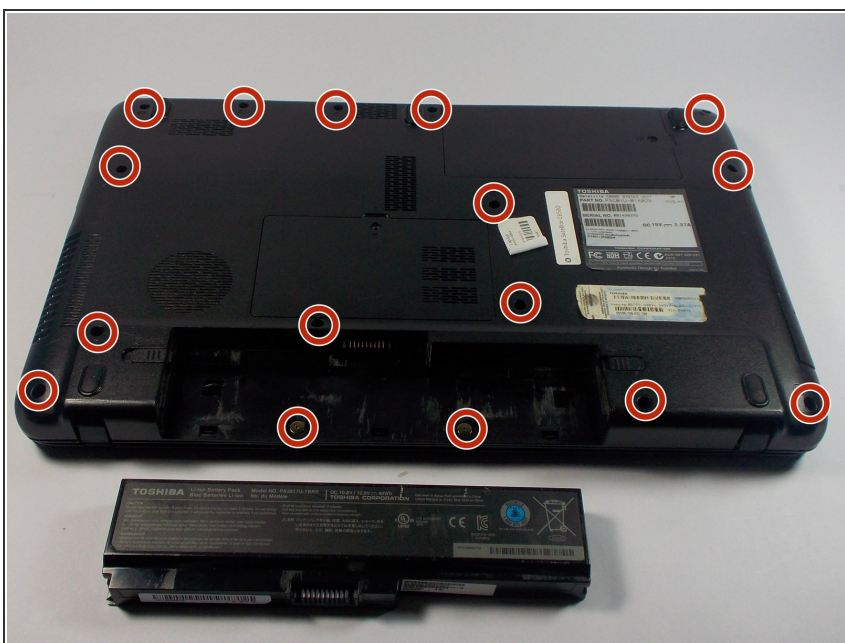


### Step 3



- Slide the battery away from the laptop.
- Locate the serial number on the battery to order a replacement.

### Step 4 — Keyboard



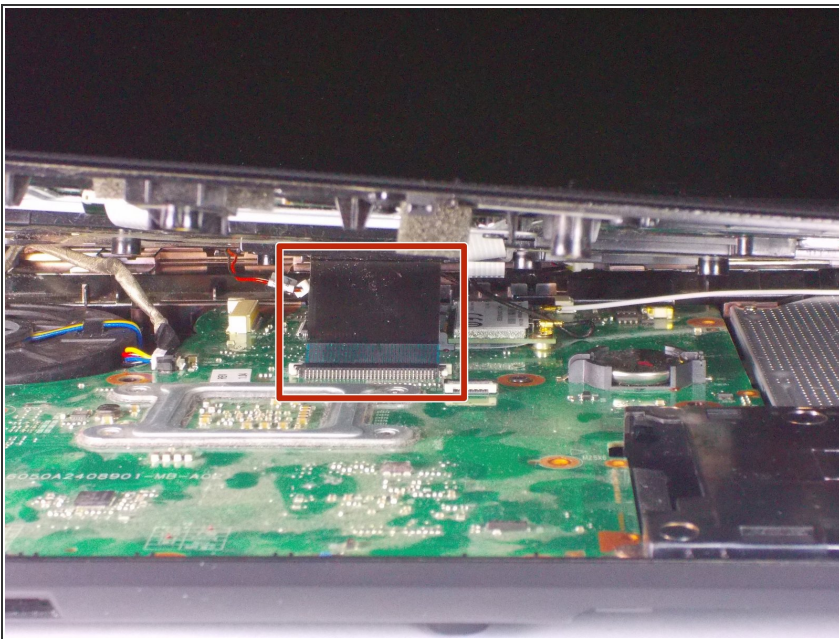
- Remove the fourteen 6.0mm and two 2.0mm Philip's #0 screws connecting the keyboard to the back.
- ⓘ Make sure you keep track of all the screws.

## Step 5



- Flip the computer over.
  - Use a nylon spudger to lift the keyboard.
  - Go around the edge of the keyboard and lift until the keyboard separates from the back.
- i** Only lift the keyboard a little at a time, otherwise you risk damaging the plastic.

## Step 6



- Detach the ribbon cable that connects the keyboard to the motherboard.

To reassemble your device, follow these instructions in reverse order.