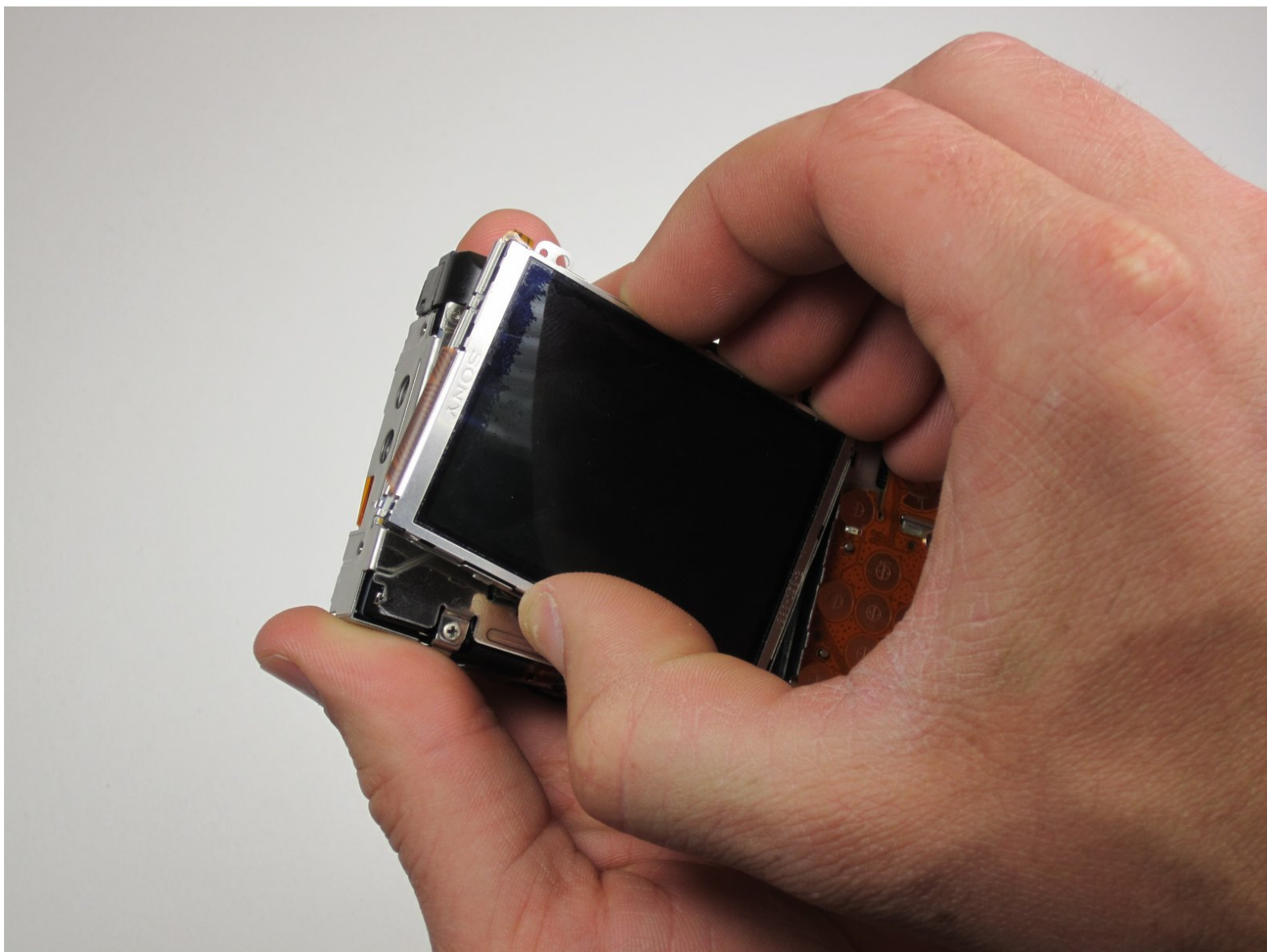




Canon Powershot SD550 LCD Screen Replacement

This guide will help you take apart the Canon PowerShot SD550 and replace the LCD screen.

Written By: Vivian Su



INTRODUCTION

A cracked LCD screen is a prevalent problem in digital cameras. But, before you spend money on a new LCD screen, make sure the camera still works by taking a few pictures and uploading them to your computer. A cracked LCD will not affect the quality of the pictures. You do not want to try to replace the LCD if something else is broken.



TOOLS:

- [Phillips #00 Screwdriver](#) (1)
 - [Spudger](#) (1)
-

Step 1 — Outer Case



- Remove the battery and SD card from the camera.

Step 2



- Remove the three 3.8 mm screws from the underside of the camera.
- ⓘ Each of the screws is slightly different, so it is important that you note the original location of each screw.

Step 3



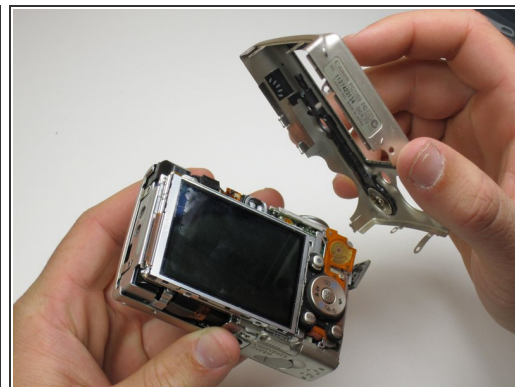
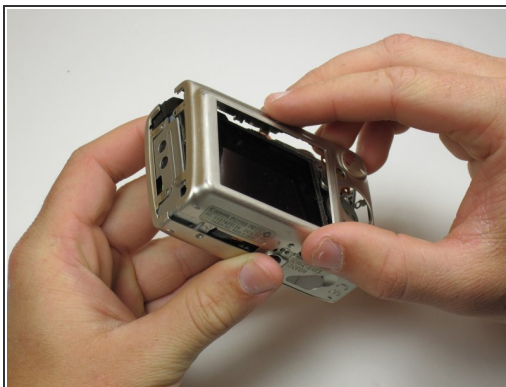
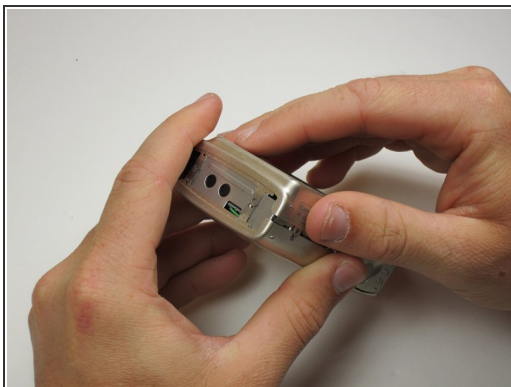
- Remove the 3.2 mm screw from the right side of the camera.
- Remove the 2.2 mm screw from the right side of the camera.
- ⓘ One of these screws is hidden under the USB port cover.
- Lift the side panel off.
- Remove the 1.8 mm screw from underneath the side panel.

Step 4



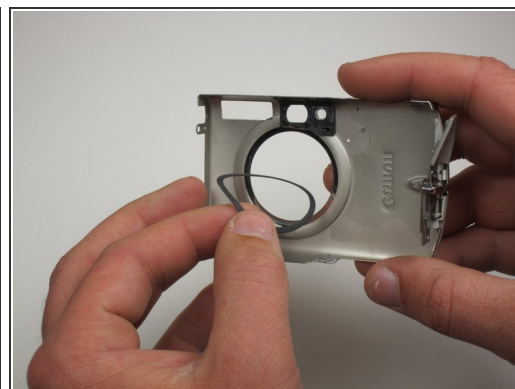
- Remove the two 2.2 mm screws from the left side of the camera.
- Lift the plate from the camera.

Step 5



- Gently lift the rear of the case to remove it from the camera.

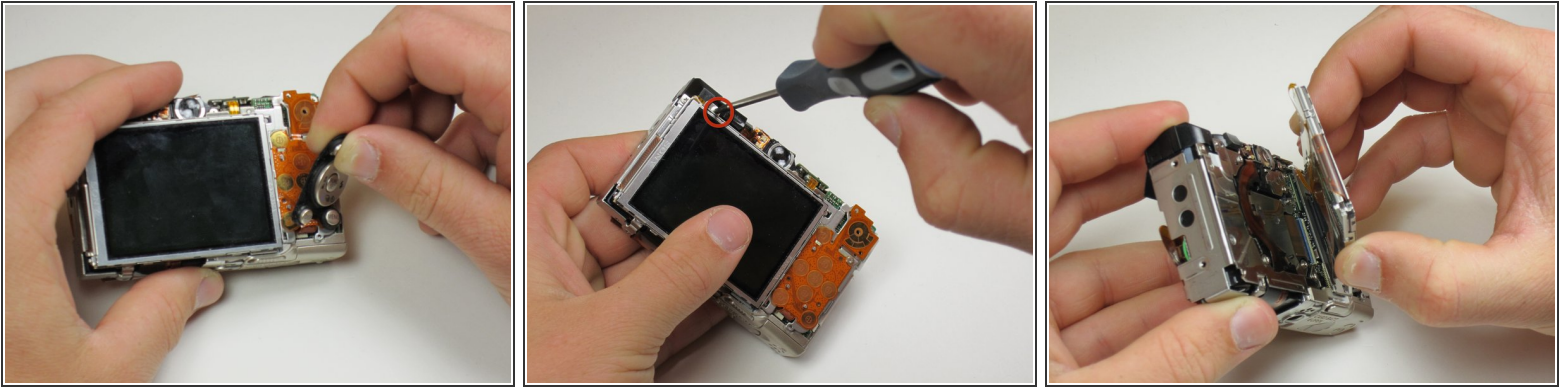
Step 6



- Remove the front of the camera body.

- ⓘ Be sure to keep track of the rubber ring.

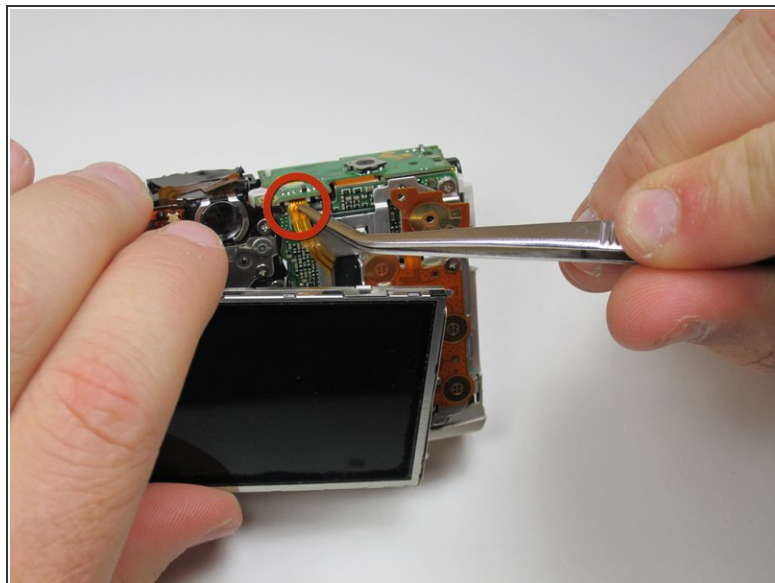
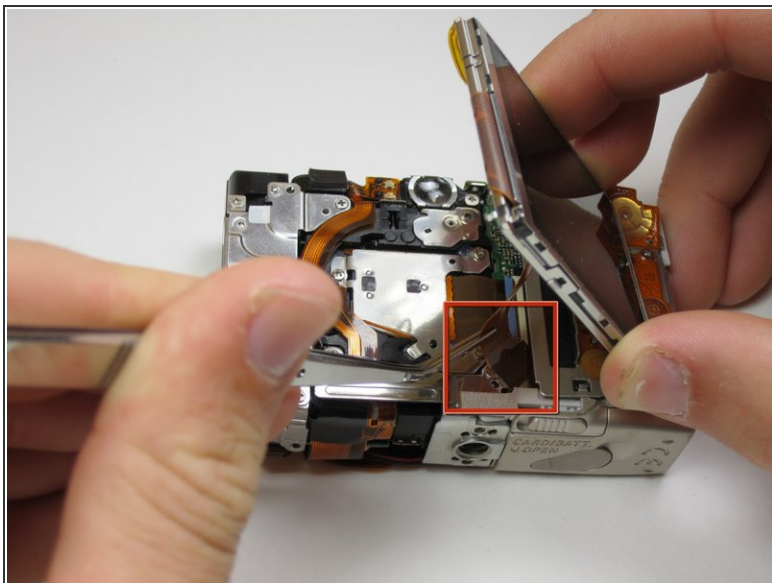
Step 7 — LCD Screen



- Peel the navigation buttons from the button panel and set them aside.
- To free the LCD display, remove the 2.9 mm screw in the top left corner.
- Rotate the screen clockwise until it lifts away from the camera.

⚠ There are two ribbon cables attached to the rear of the screen. Do not try to pull the screen off at this point.

Step 8



- To unplug the ribbon cables, pull them straight out of their plugs. Do this gently to avoid damaging the connections.
- After disconnecting both cables, pull the screen away from the camera to remove it.

To reassemble your device, follow these instructions in reverse order.