



HP Photosmart 5520 Maintenance

This guide will help you to remove the print...

Written By: DrNox



INTRODUCTION

This guide will help you to remove the print head and to clean the printer : the print head park slot is usually full of ink and dust melted.

TOOLS:

TR10 Torx Security Screwdriver (1)

Nitrile Gloves 100 Box (1)

Step 1 — Centering the printhead



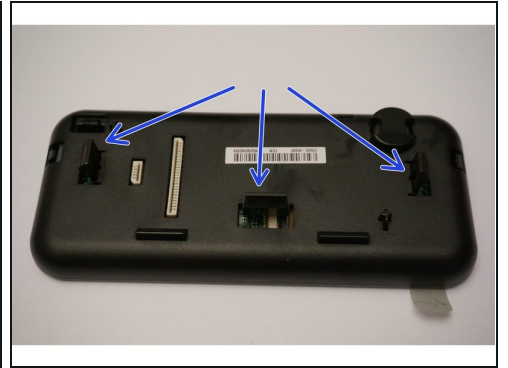
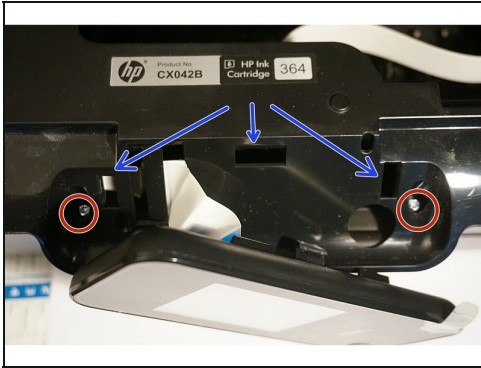
- Turn on the printer
- Lift up the scanner glass and the top cover, then the printhead is centered in the printer case
- Remove the ink cartridges.
- Unplug the printer but do not turn off with the front I/O button. Otherwise the printhead will return to its park slot.
- Use adhesive tape to fix together the scanner glass and the cover

Step 2 — Removing the top cover



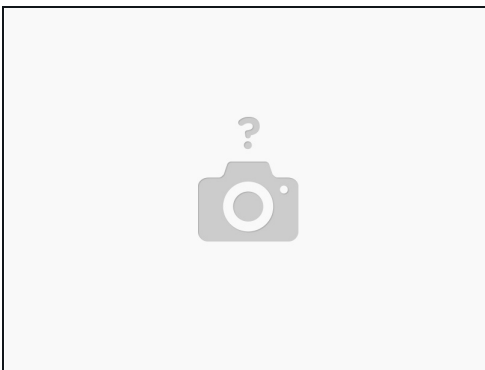
- Gently pull on the hook. Retain the scanner glass and the cover once the hook is removed.

Step 3 — Removing the printer hood



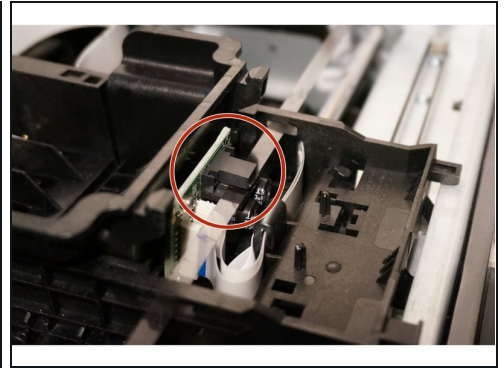
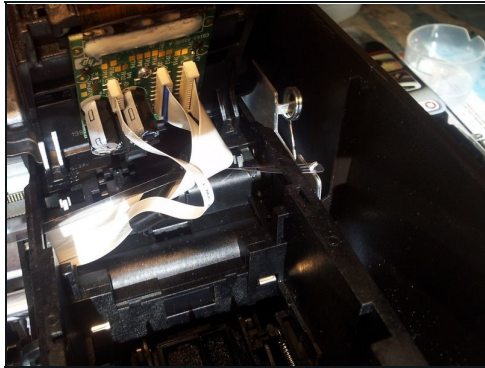
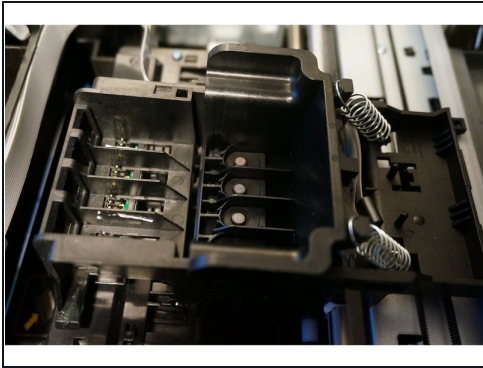
- Unscrew the 7 torx screws. Do not forget the one under the printer label (You have to remove the printer label. Lower right corner).
- Push the clips at the rear of the LCD panel and pull the LCD panel outwards at the same time. The clips can be felt, but not seen underneath the plastic on which the HP label is visible in the middle picture. A fourth picture would help here.
- Then, pull the ribbon connected to the LCD panel to disconnect the LCD panel from the printer.
- Remove the 2 remaining torx screws hidden by the LCD panel
- See where are clips (Blue arrows)

Step 4



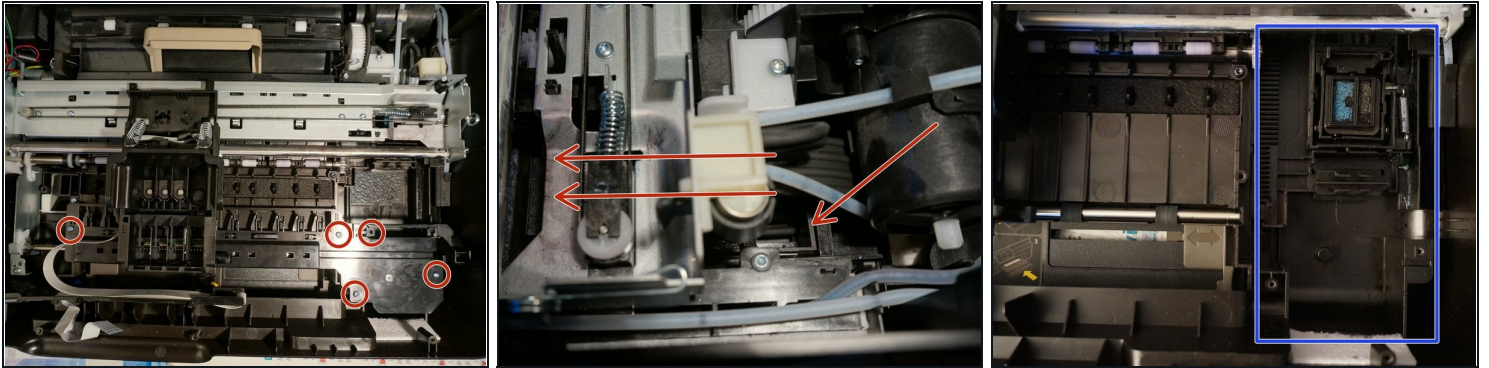
- Now the cover can be removed and expose the inner workings of the printer.

Step 5 — Removing the print head



- Remove the springs that maintain the print head.
- Remove the print head by pulling on the ribbons. These are delicate and easily damaged if attempting to clean with alcohol.
- ① In case you want to replace the print head, the spare part reference is: CN688A
- When inserting the print head after cleaning or replacing, make sure the horizontal plastic ribbon is between the plastic guides, as shown in the last picture. Getting this wrong may cause the print head to jam when you put the power back on at the end.

Step 6 — Cleaning the print head park slot



- The printer has an automatic feature to clean the print head. Usually, there is a lot of ink (Probably melt with dust) in the area where the print head is cleaned
- Remove 4 of the 5 torx screws as shown in the picture. As given in a user comment, the top right one serves to join the two pieces of this part.
- Assuming the print head is now removed (Not shown on the picture), now gently tip the plastic plate and remove it
- If you didn't put gloves yet, it is time to do it !
- Now, push the carriage that holds the print head cleaning system (Red arrows)
- The carriage that holds the print head cleaning system is now clean (Last picture)

To reassemble your device, follow these instructions in reverse order.