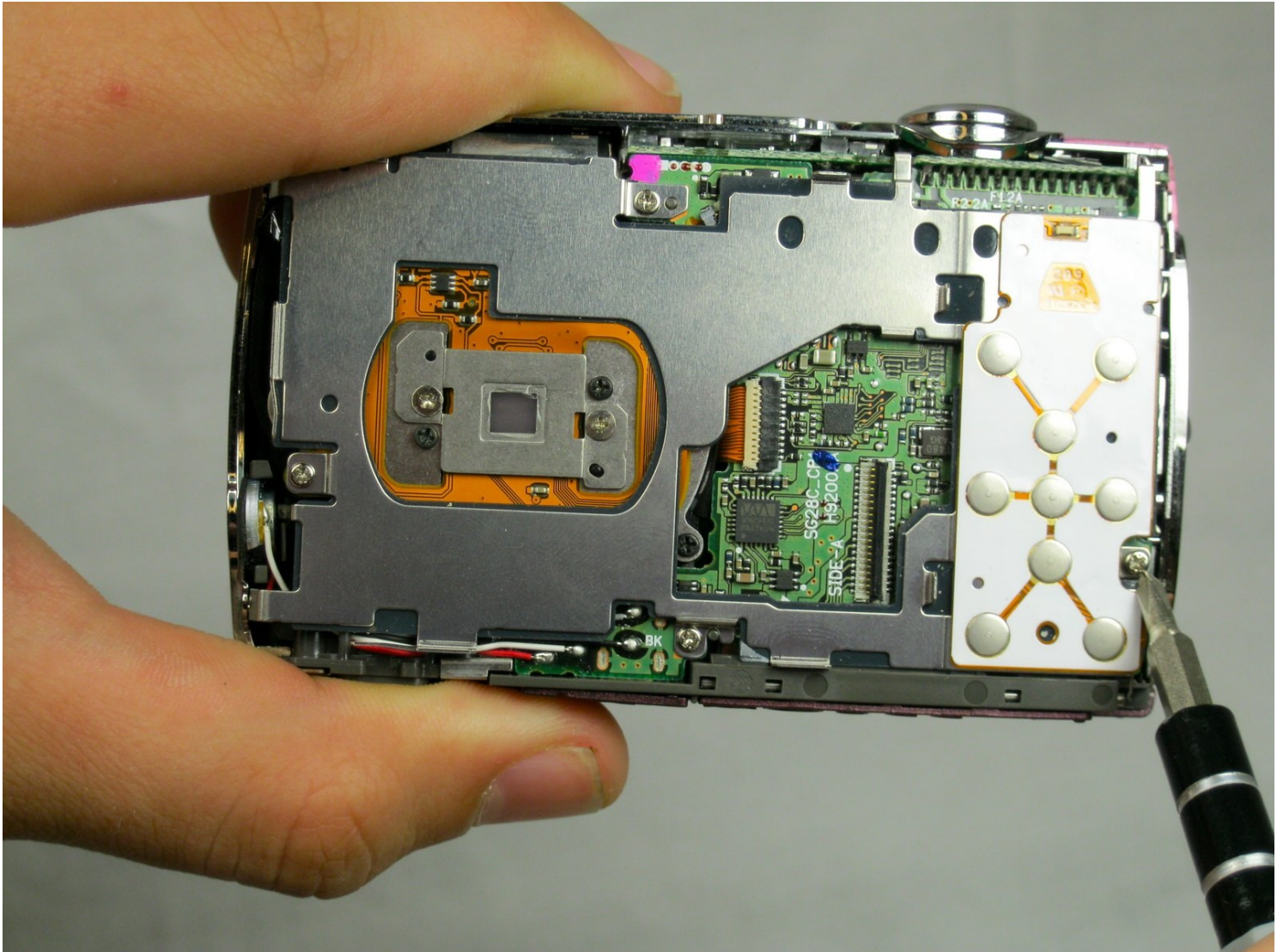




# Nikon Coolpix S220 Accessing the Motherboard

This guide will show how to access the...

Written By: Shauna



# INTRODUCTION

This guide will show how to access the motherboard which will give you the ability to remove the lens and flash.

---

## TOOLS:

Phillips #00 Screwdriver (1)

Tweezers (1)

---

### Step 1 — Outer Cover



- Remove the two 2.8 mm screws on the left side of the camera.

## Step 2



- Remove the four 2.8 mm screws on the right side of the camera.

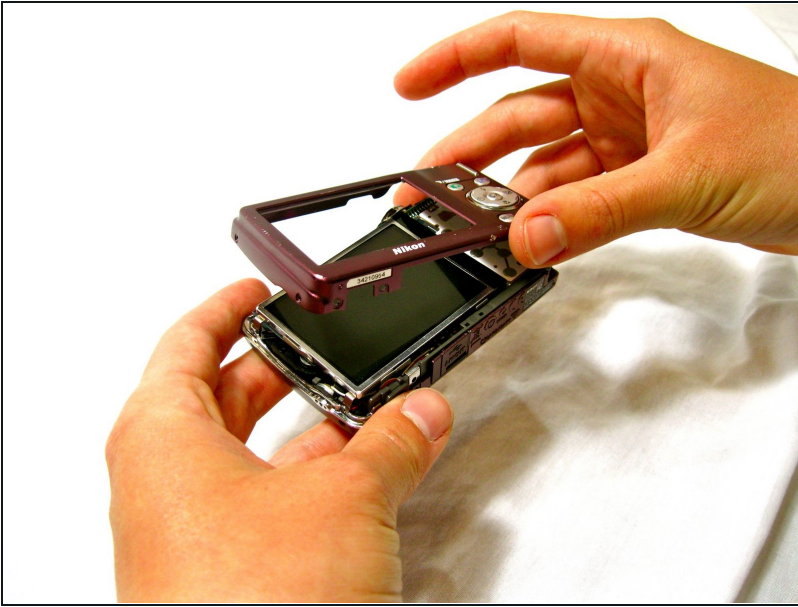
## Step 3



- Remove the three 4.1 mm screws on the bottom of the camera.



## Step 4



- Gently lift the rear cover from the camera.

## Step 5 — LCD



- Gently lift the screen out of its place.
- ① You will need to hold the screen slightly above the camera because it will still be attached to the camera by an orange ribbon cable.

## Step 6



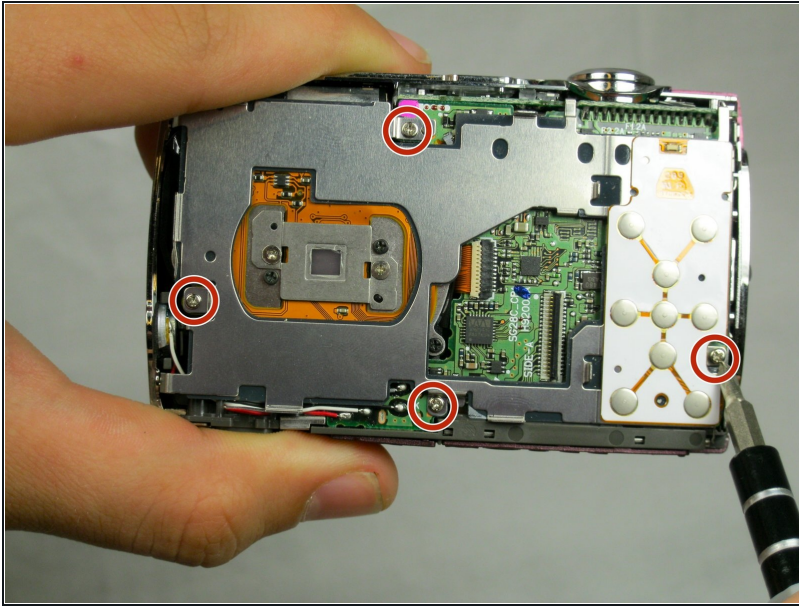
- Use the [tweezers](#) to lift the ZIF connector which is holding the ribbon cables that connect the LCD screen to the motherboard.

## Step 7



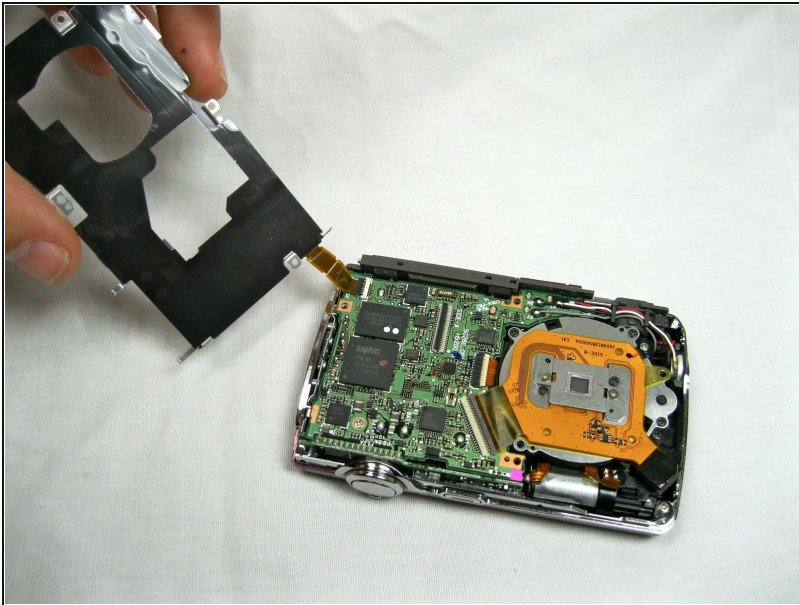
- Slowly pull the screen from the camera.

## Step 8 — Motherboard



- Remove the four 3.8 mm screws located near the bottom right and top left of the LCD base plate.

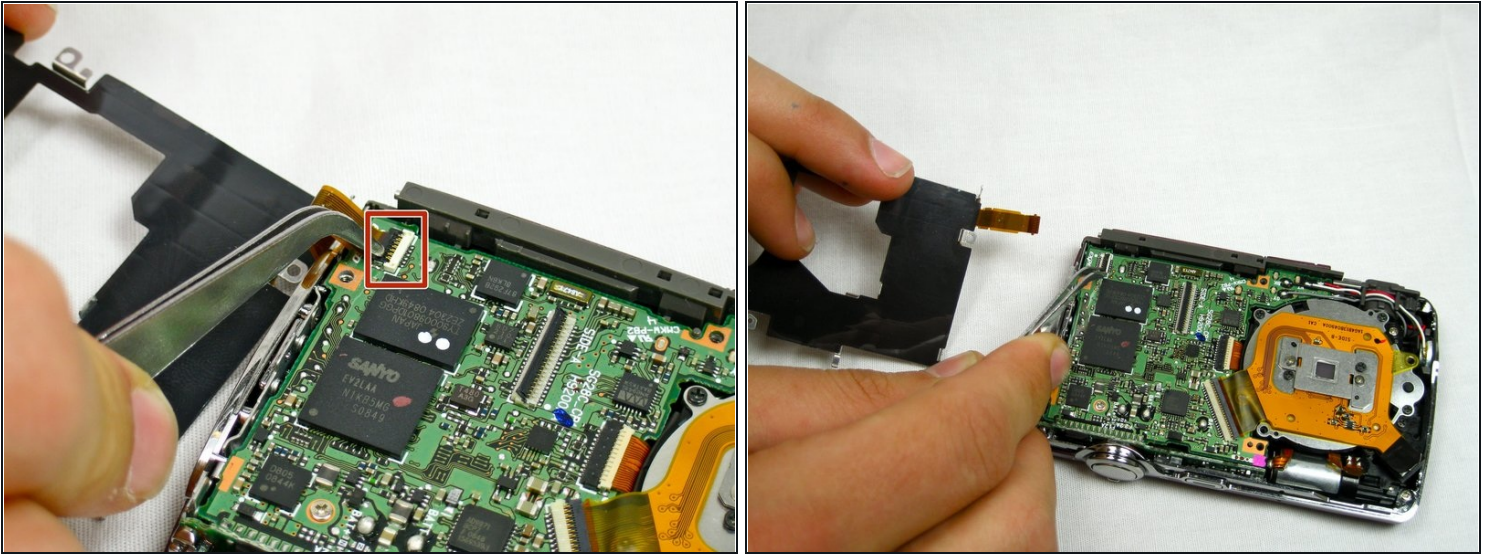
## Step 9



- Lift up silver LCD base plate



## Step 10



- Using [tweezers](#), lift up the retaining flap on the ZIF connector securing the button panel ribbon cable.
- Slide the button panel ribbon cable out of its socket on the motherboard.

---

To reassemble your device, follow these instructions in reverse order.