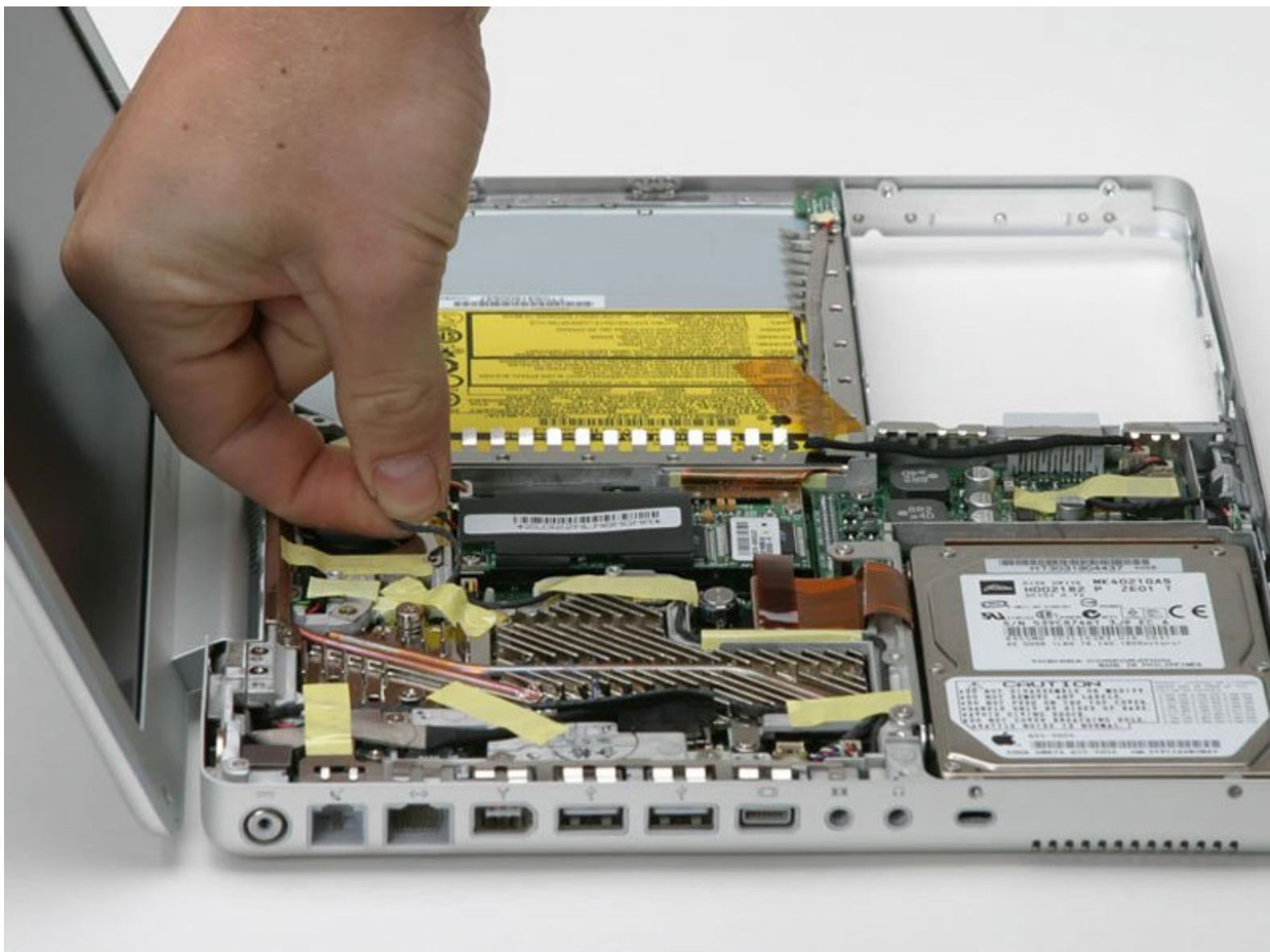




# PowerBook G4 Aluminum 12" 1-1.5 GHz RJ-11 Board Replacement

Written By: iRobot



# INTRODUCTION

56k internal modem, standard on all models.



## TOOLS:

- [Coin](#) (1)
- [Phillips #00 Screwdriver](#) (1)
- [T6 Torx Screwdriver](#) (1)



## PARTS:

- [G4 Aluminum 12" 867/1 GHz RJ-11 Board](#) (1)
- [G4 Aluminum 12" 1.33 GHz RJ-11 Board](#) (1)
- [G4 Aluminum 12" 1.5 GHz RJ-11 Board](#) (1)

## Step 1 — Battery



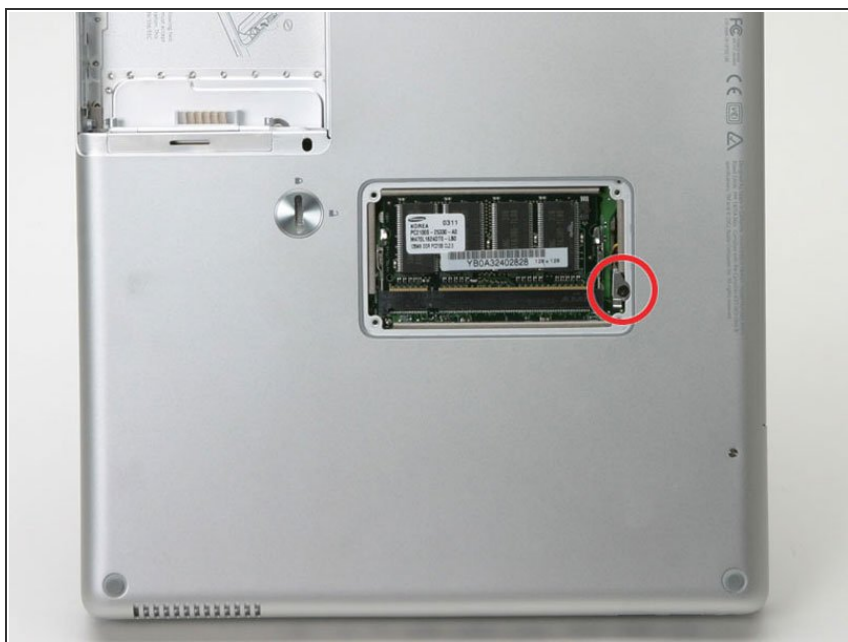
- Use a coin to turn the battery locking screw 90 degrees to the right.
- Lift the battery out of the computer.

## Step 2 — EMI Finger



- Remove the four Phillips screws from the memory door.
- Slide the memory door away from the memory compartment.

## Step 3



- Remove the long black Phillips screw next to the memory card.
- Remove the small EMI finger beneath the black screw.

## Step 4 — Keyboard



- On the keyboard, remove the F1, F2, F11, and F12 keys.
  - This is scary - take a deep breath before continuing. Place your index finger under the upper left corner of the key and lift up until you hear a click. Then, transfer your finger to the left edge of the key and lift up to pull the key off.
  - You're freeing the two tabs on the left of the key from the two small holes in the plastic scissors mechanism.
- ★ When replacing the keys in the keyboard, place the key directly over the slot where it will go and press down until you hear the key click into place.

## Step 5



- Use your fingernail or a small flathead screwdriver to peel up the gray stickers covering each of the screws.

## Step 6



- Remove the two short Phillips screws.

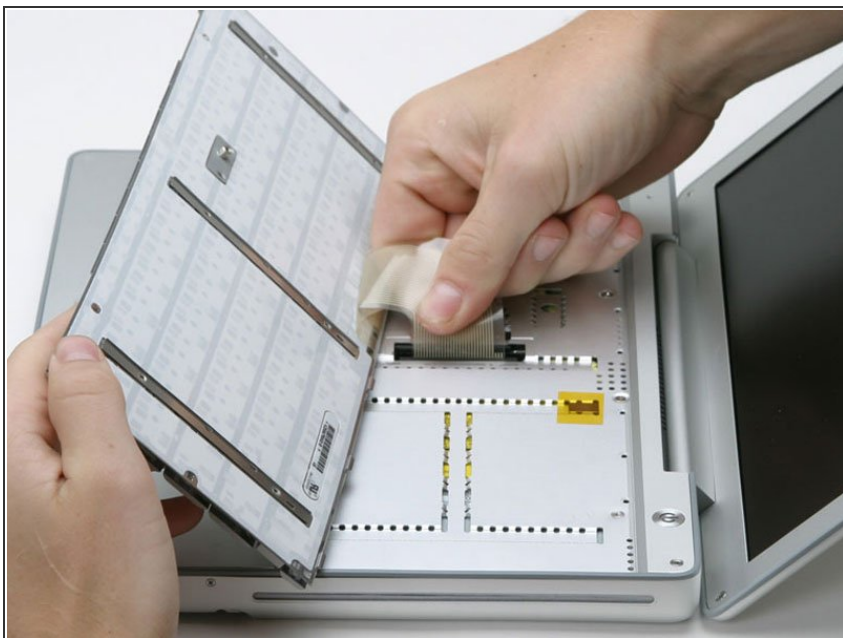


## Step 7



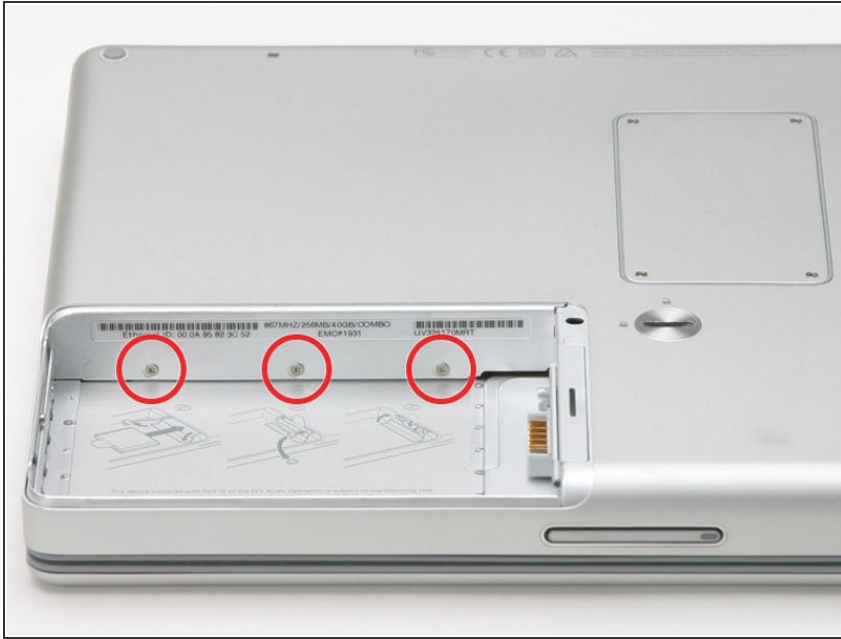
- Lift the keyboard by the 'esc' and 'eject' keys and gently lift up until the keyboard is vertical.

## Step 8



- Grasp the keyboard connector ribbon near the connector and disconnect it from the logic board.

## Step 9 — Upper Case



- Remove the three 2.5mm Phillips screws from within the battery compartment.

## Step 10



- Turn the computer 90 degrees clockwise and remove the two Phillips screws from the casing.
- Outside case screws are aprox. 1/4 in long

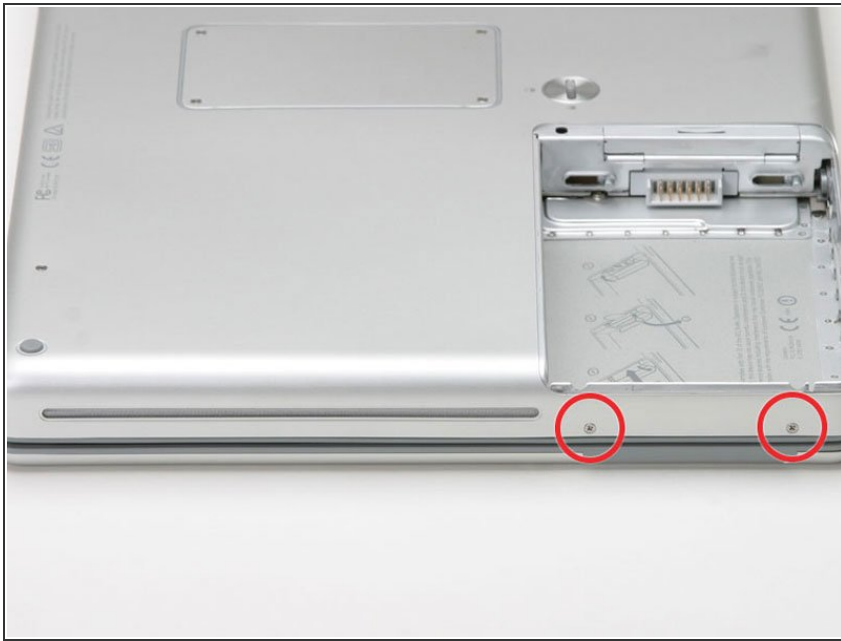


## Step 11



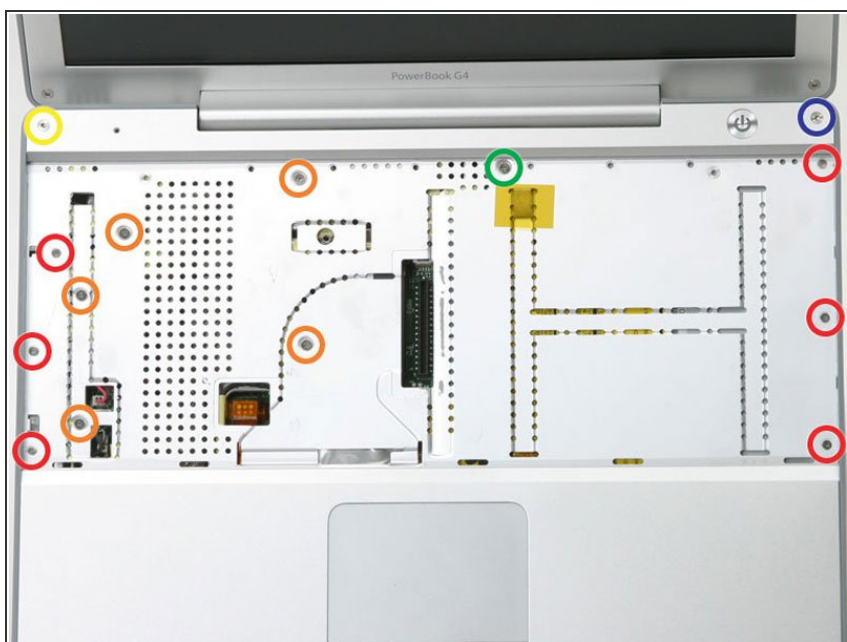
- Turn the computer 90 degrees clockwise again, and remove only the bottom screw on either side of the hinge.

## Step 12



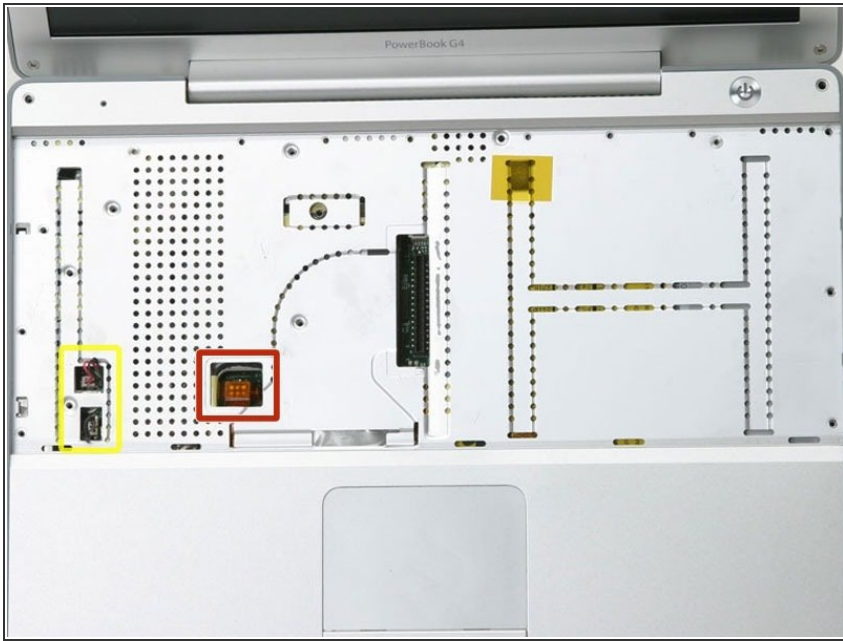
- Turn the computer 90 degrees clockwise just one more time, and remove the two Phillips screws on the exterior wall of the battery compartment.
- Note: For reassembly the two screws have long necks.

## Step 13



- Turn the computer over and open it up.
- Remove the following 14 screws:
  - Six 2.5 mm Phillips on either side of the keyboard area.
  - Five 4.5 mm Phillips on the left half of the keyboard area.
  - One 7 mm hex in the upper left corner of the upper case (a T6 Torx driver will do the job nicely).
  - One 15 mm Phillips in the upper middle of the keyboard area.
  - One 16.5 mm hex in the upper right of the upper case (again, a T6 Torx driver will work well).

## Step 14



⚠ This step is extremely tricky, and has the potential to ruin your computer. It is easy to pull the plug with the red and black leads (the power) out of the motherboard. If you do that, it is nearly impossible to fix.

- Peel up the two pieces of foil tape on the left side of the keyboard area.

⚠ The connectors at the ends of the cables are attached very firmly to the sockets on the logic board. Pulling directly on the cable will either separate the cable from its connector or the socket from the logic board.

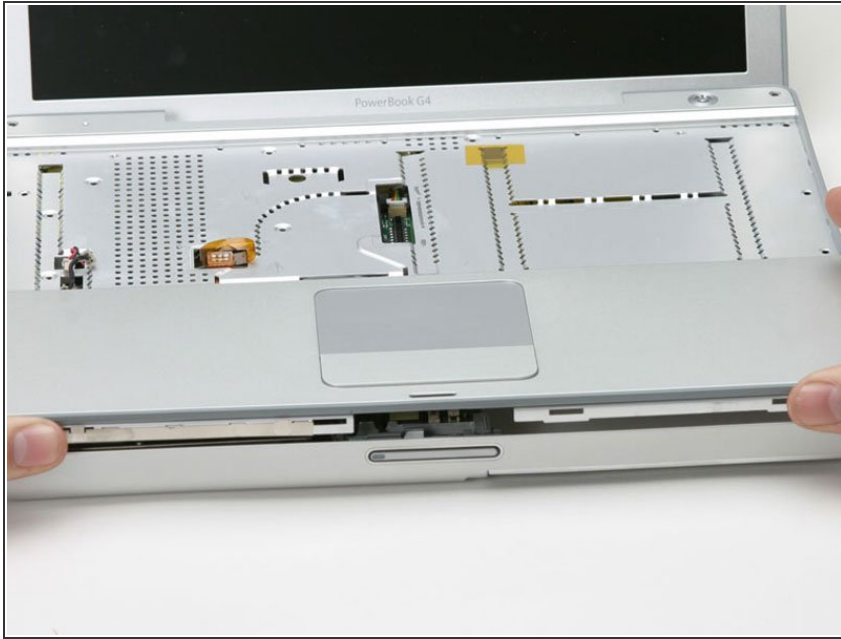
- Carefully disconnect the microphone and power cables from the logic board. Using your fingernails or a dental pick, carefully pry the connectors from their sockets. Make sure you're pulling only on the connector and not on the socket.

## Step 15



- Starting at one of the upper corners near the screen, work around the frame, separating the upper case from the lower case.

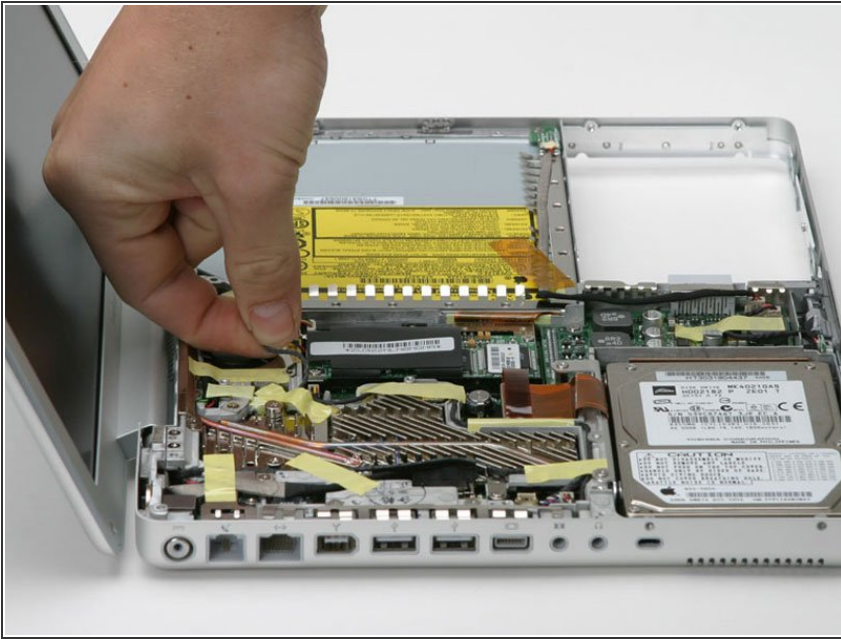
## Step 16



- Using a screw driver, gently release the two grey plastic clips inside the battery compartment in order to remove the right part of the upper case.
- There are two more grey plastic clips holding the left part of the upper case. They are not easy to release as they are hidden from view prior to disassembly. They are in the same position as the two in the battery compartment, but on the opposite side of the trackpad. Try to stick a flat pry tool into the clip holes and push the clips inward (toward to screen) so they disengage and release the left part of the upper case.
- Lift the upper case off the computer.

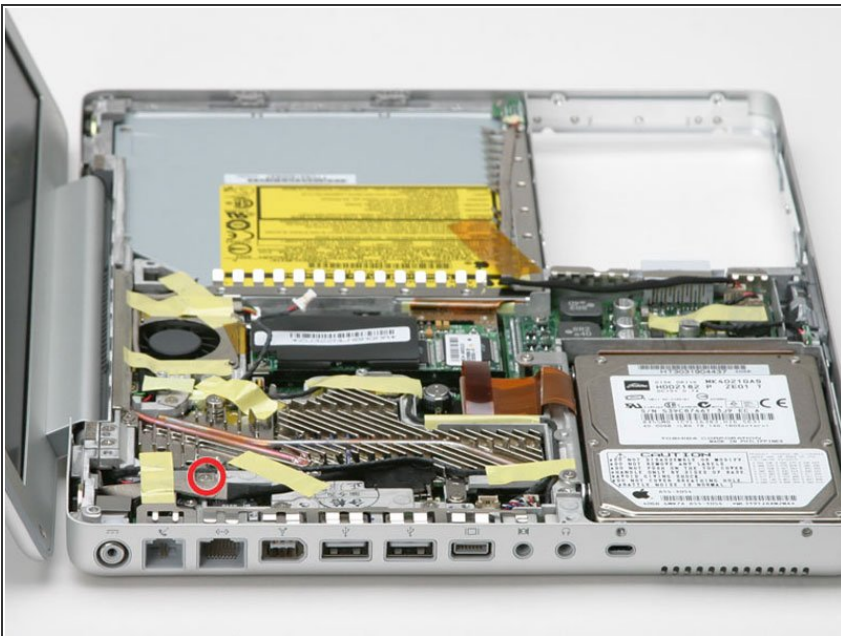


## Step 17 — RJ-11 Board



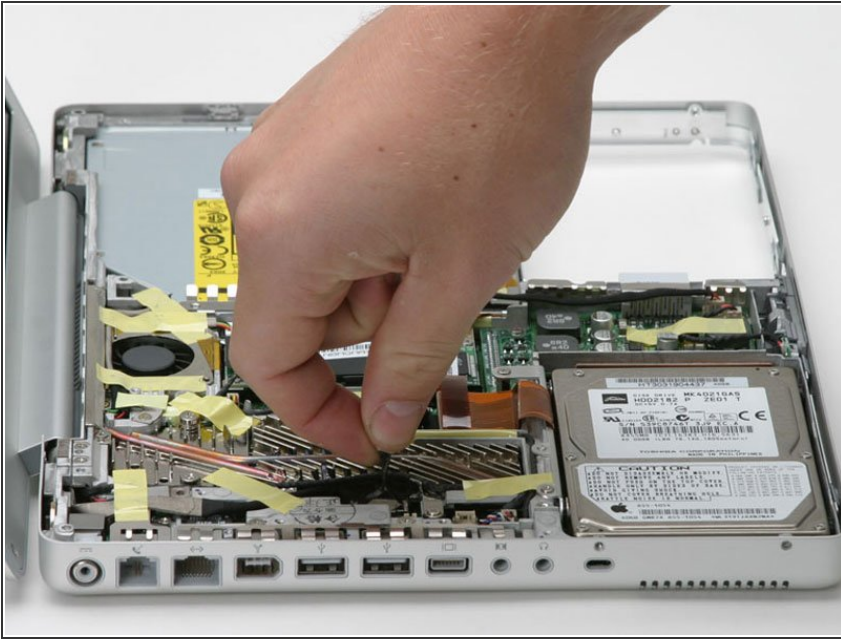
- Disconnect the modem cable from the screen side of the modem and deroute it from the metal framework.

## Step 18



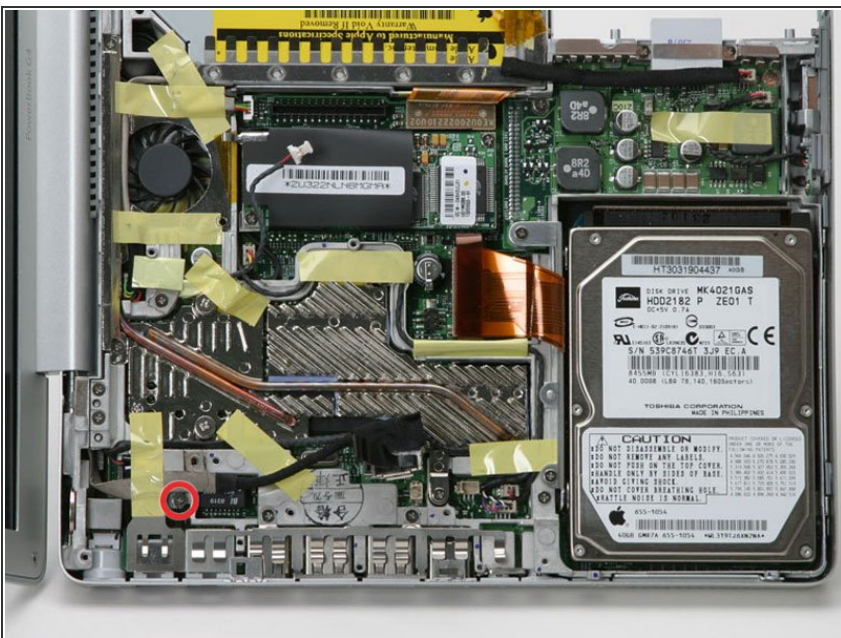
- Remove the Phillips screw securing the display data cable to the metal framework.

## Step 19



- Use the black plastic pull tab to disconnect the display data cable from the logic board.

## Step 20



- Remove the Phillips screw securing the RJ-11 Board.

## Step 21



- Lift up on the left side of the RJ-11 Board and remove it from the computer.

To reassemble your device, follow these instructions in reverse order.