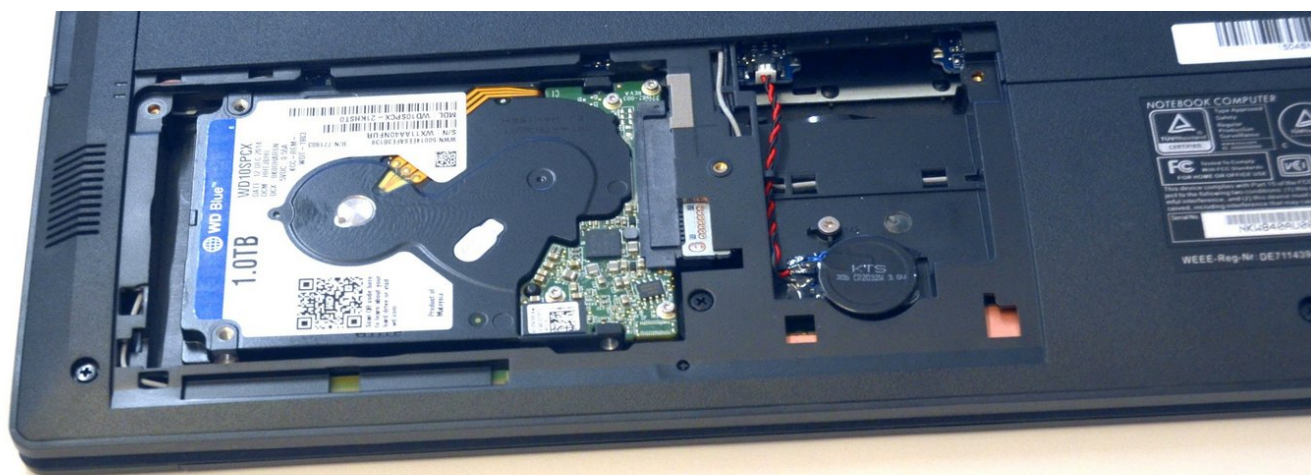




# Access to the components 1

Access to the components 1

Written By: Felice Suglia



---

# INTRODUCTION

Access to the components 1

---



## TOOLS:

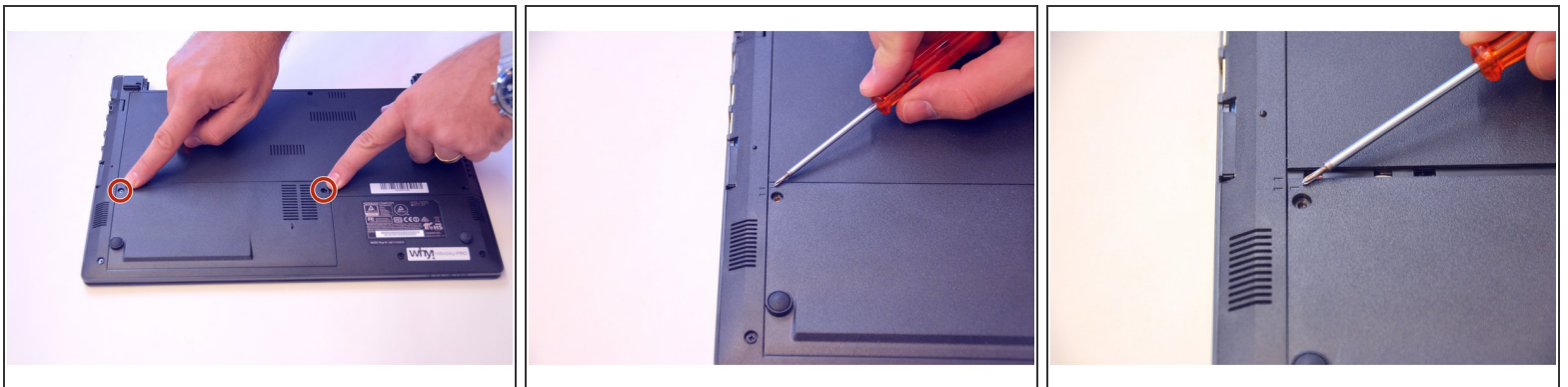
- [Phillips #0 Screwdriver](#) (1)
-

## Step 1 — Battery



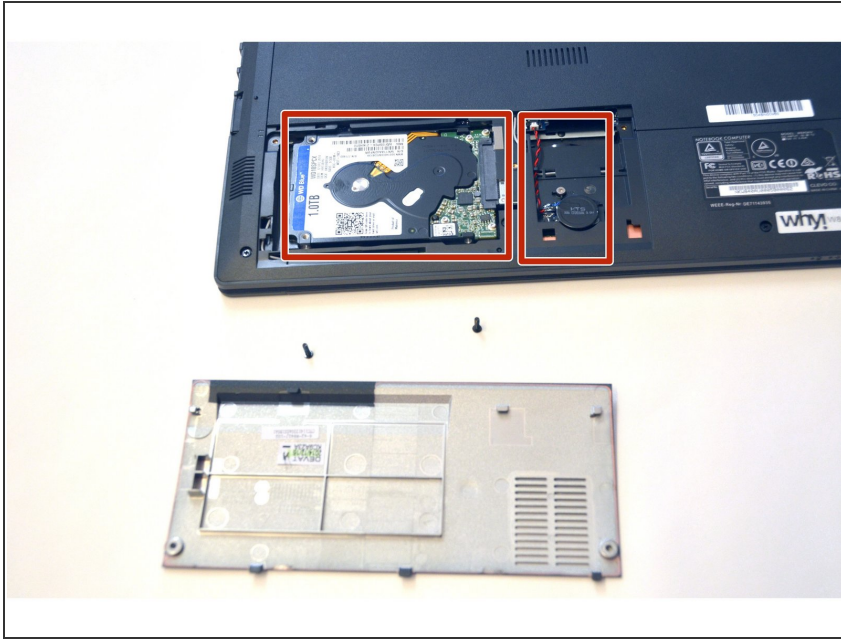
- Open the latch on the right side that secures the battery in place.
- Open the latch on the left side that secures the battery in place.
- Now remove the battery.

## Step 2 — Access to the components 1



- Use the Philips screwdriver to remove the two screws on the bottom cover.
- Check the markers to determine how to remove the cover.
- Now remove the cover as prescribed by the markers.

## Step 3



- The components HDD hard disk and BIOS battery are now visible.

To assemble the device, proceed in reverse order