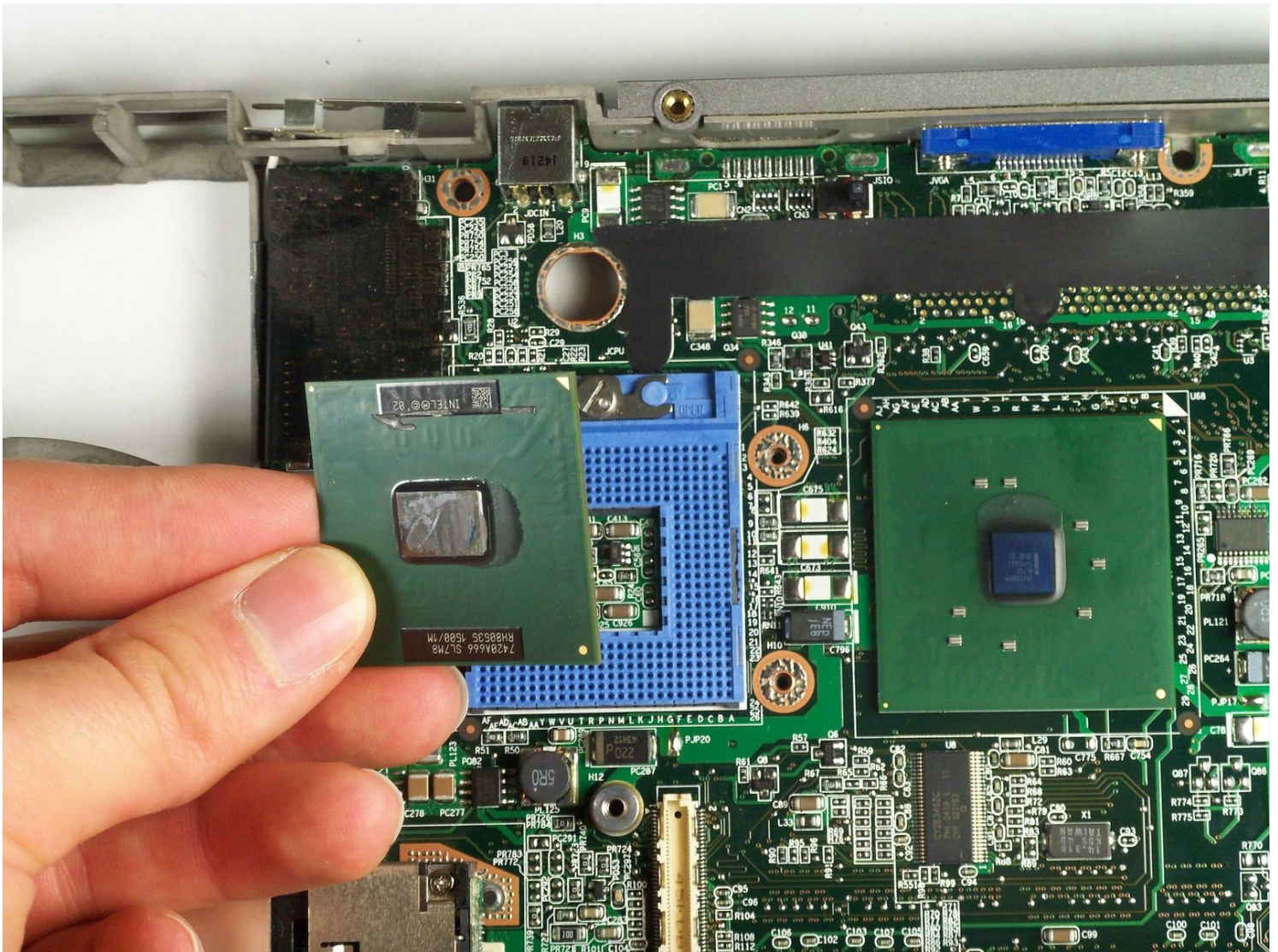




Dell Inspiron 8600 Processor (CPU) Replacement

This guide will show you how to remove and...

Written By: John Nesthus



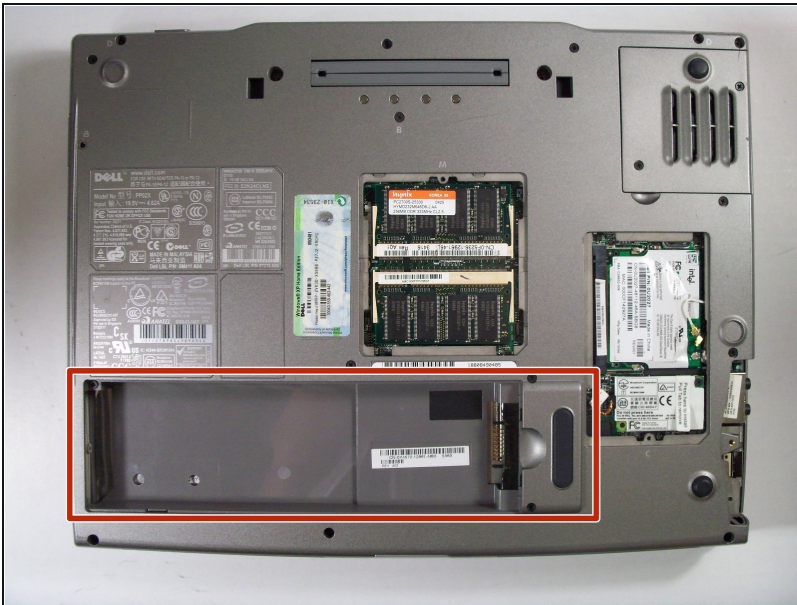
INTRODUCTION

This guide will show you how to remove and replace the processor unit.


TOOLS:

Phillips #1 Screwdriver (1)

Step 1 — Battery



- Remove the battery from the bottom left of the laptop as shown.

 **Remove the battery before operating on the computer to avoid electrocution.**

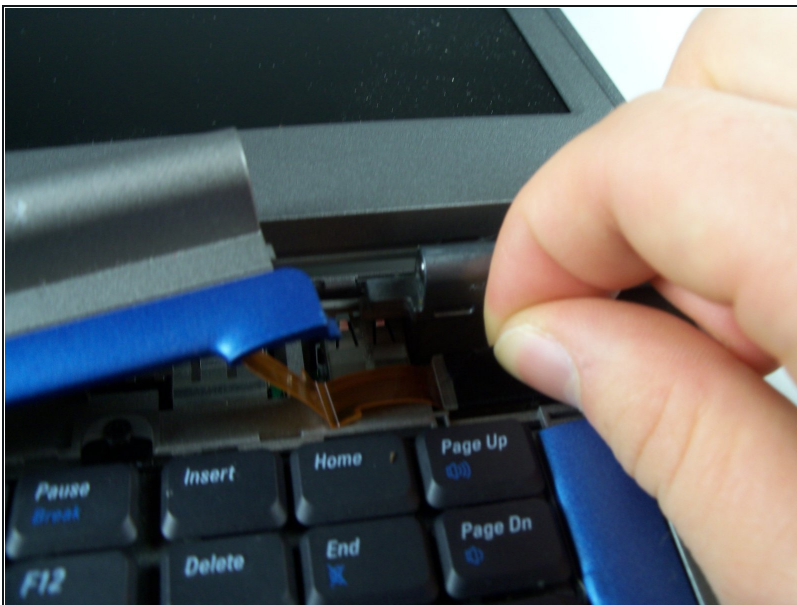
Step 2 — Hinge Cover



- Insert a spudger into the notch at the far left side of the top blue panel and pry the hinge cover off.
- You may need to pry the other side off as well. You can do this by inserting the spudger between the hinge and the top cover.

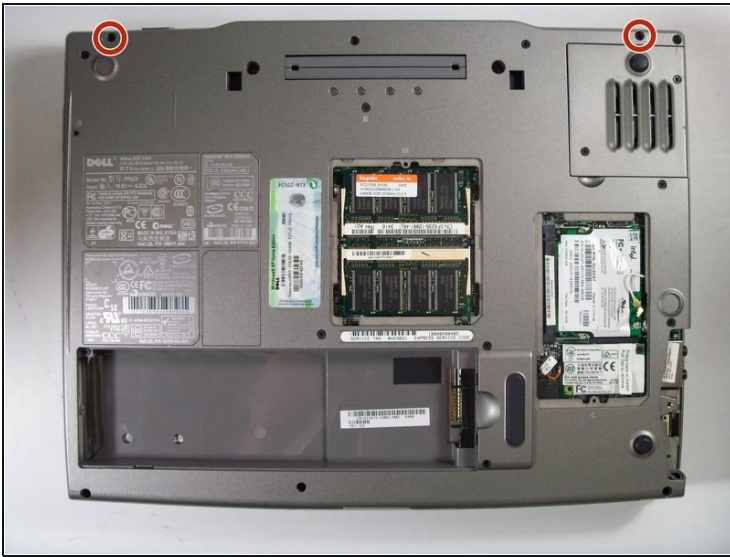
⚠ Be careful of the wire attached to the underside of the hinge cover.

Step 3



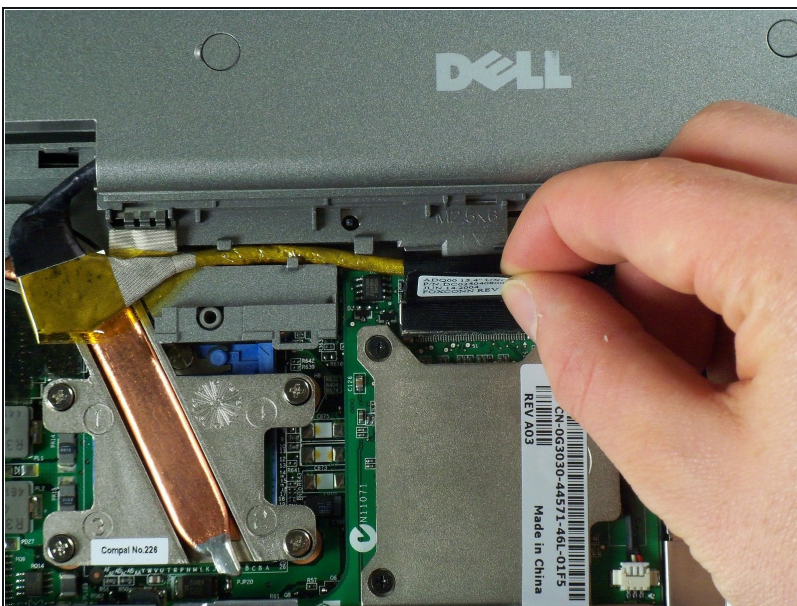
- Pull the small black tab on the right hand side of the laptop.
- You have now removed the hinge cover.

Step 4 — Display Module



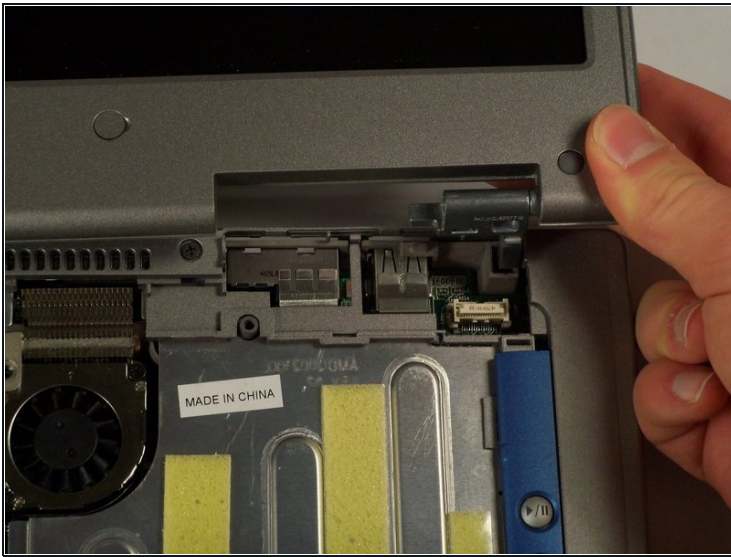
- Flip the laptop over and remove the indicated screws.
- Flip the laptop back over.
- Find the two places where the display module is attached to the base of the computer.

Step 5



- Disconnect the video card from the display module by gently lifting upwards on the black tab.

Step 6



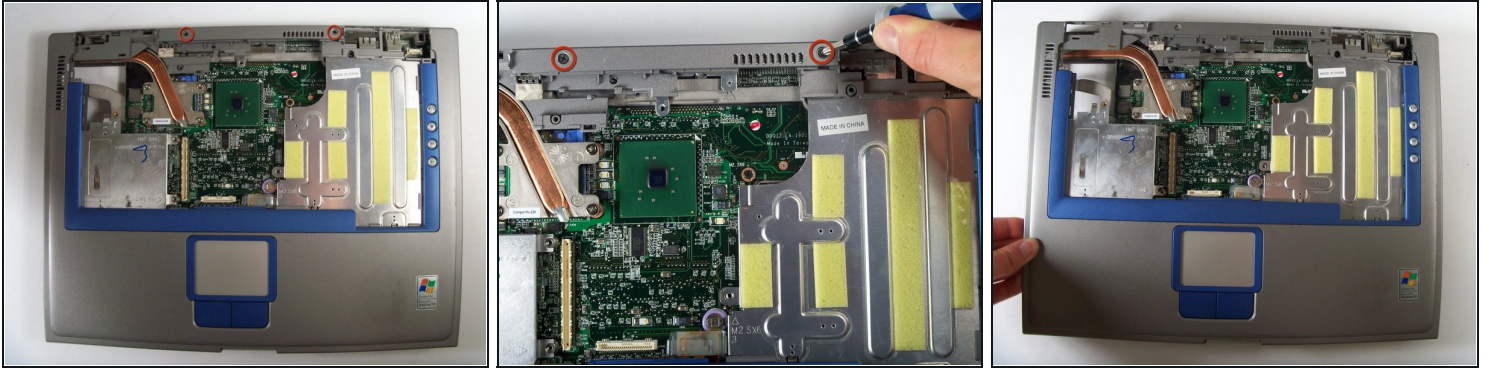
- Lift the display module directly upwards from the base of the computer.

Step 7



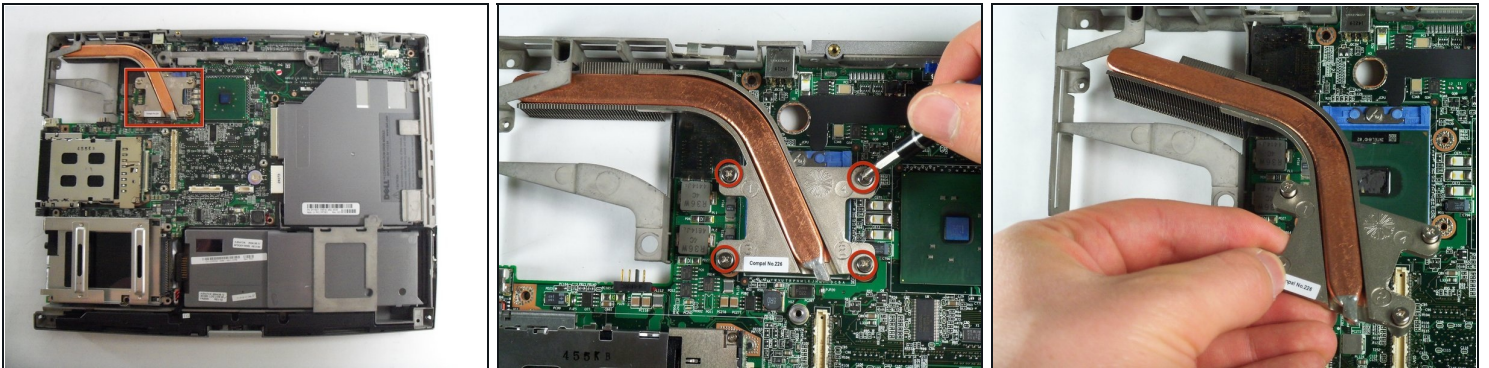
- Now remove the display module.

Step 8 — Processor (CPU)



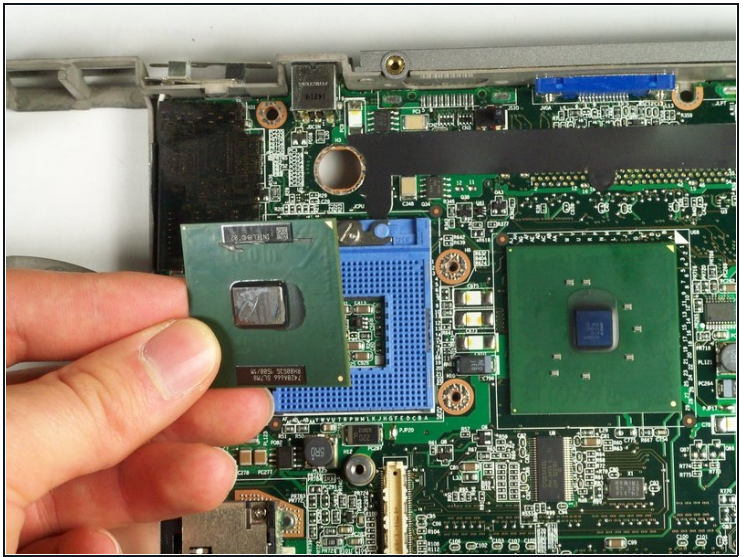
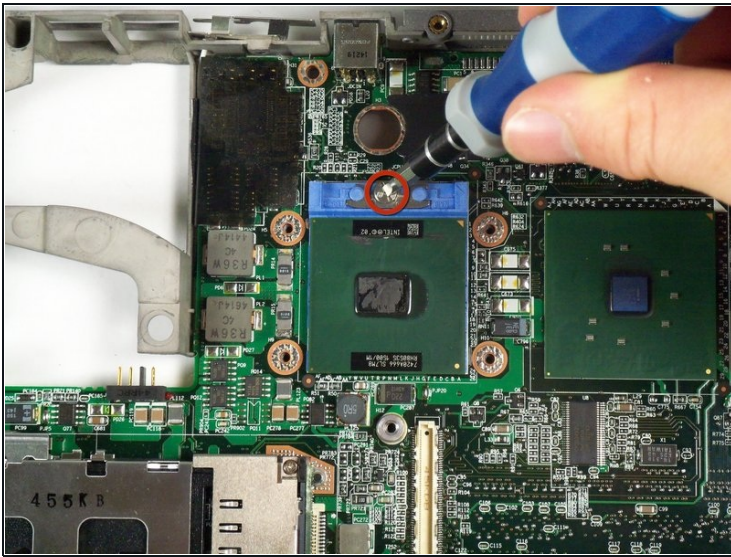
- Locate and remove the top two screws and all the screws on the underside holding the top case down.
- Gently pop off the top plastic case from the unit.
- Gently pop off the top plastic case from the unit.

Step 9



- Remove the copper heat sink that is housing the CPU by removing the four securing screws.
- Gently lift and remove the heat sink.

Step 10



- Gently loosen but do not remove the screw, and lift the CPU.
- ① You will have to remove and replace the [How to Apply Thermal Paste](#) on the CPU base.
- You may now replace the CPU.

To reassemble your device, follow these instructions in reverse order.