



# INTRODUCTION

If your scanner is making a clicking/grinding noise and malfunctioning, chances are your calibration strip is dirty. In order to clean the calibration strip, the scanner tray and glass must be removed.

## TOOLS:

Phillips #1 Screwdriver (1)

Magnetic Project Mat (1)


Flathead 3/32" or 2.5 mm Screwdriver (1)

TR10 Torx Security Screwdriver (1)

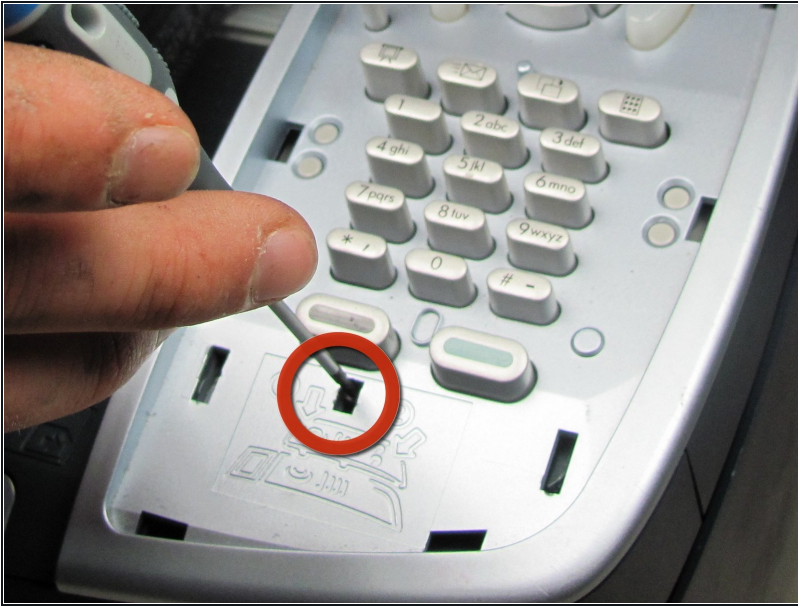
## Step 1 — Scanner Glass



- Carefully wedge the flathead 3/32" screwdriver on the outer groove of the control panel faceplate.
- Follow the perimeter of the groove with the flathead 3/32" screwdriver making sure to gently pry and lift upward until the control panel faceplate comes off.

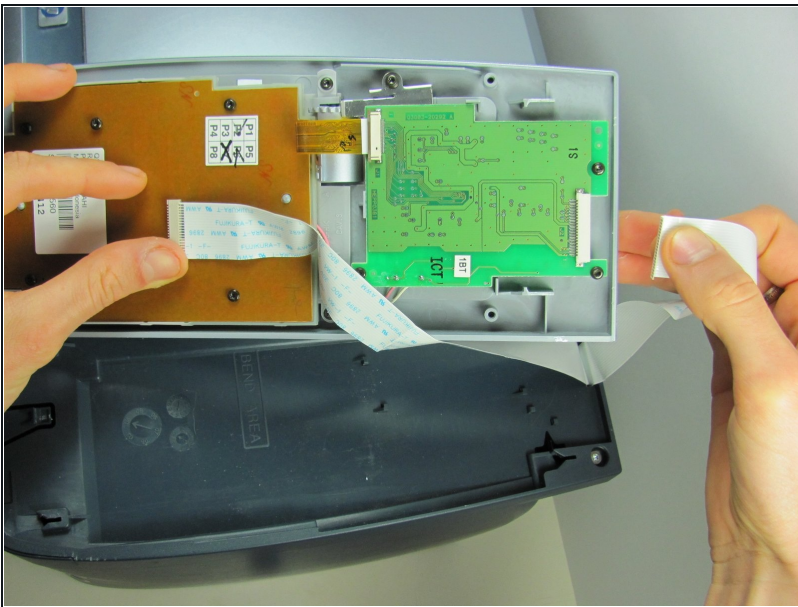
 **Potential for device damage:** Take your time prying off the control panel faceplate. If too much pressure is applied, the control panel faceplate can break.

## Step 2



- Once the control panel faceplate is off, look for the **Lock/Unlock tab** located underneath the off button.
- To unlock and release the control panel, insert the flathead 3/32" screwdriver into the tab and carefully push down. The control panel will then separate from the printer's base by sliding it downward a little.

## Step 3

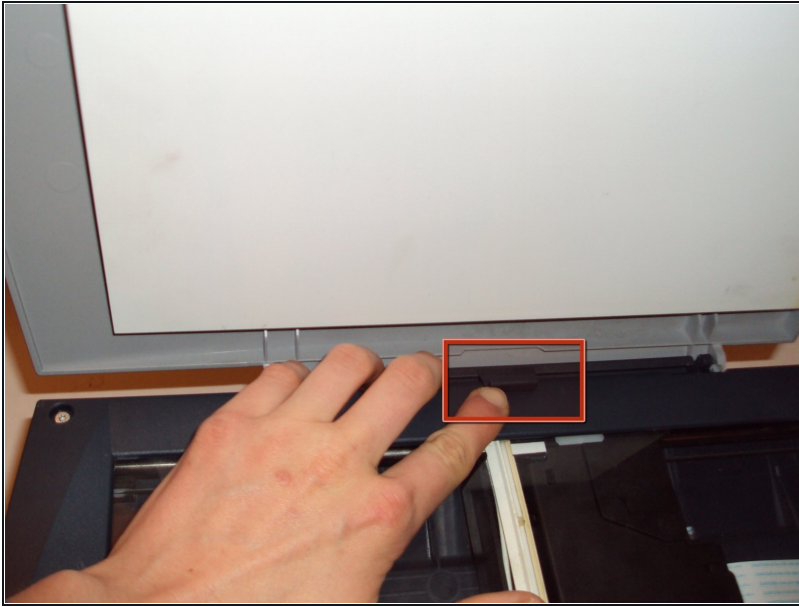


- Underneath the control panel will be a flat grey ribbon cable. This cable is attached at the base of the green control board with the other end of the cable located on the back side of the printer's base.
- Carefully disconnect both ends of the flat grey ribbon cable to release the control panel in its entirety.

⚠ **Potential for device damage:**  
Only pull from the connector portion of the cable, as pulling on the wires may damage them.

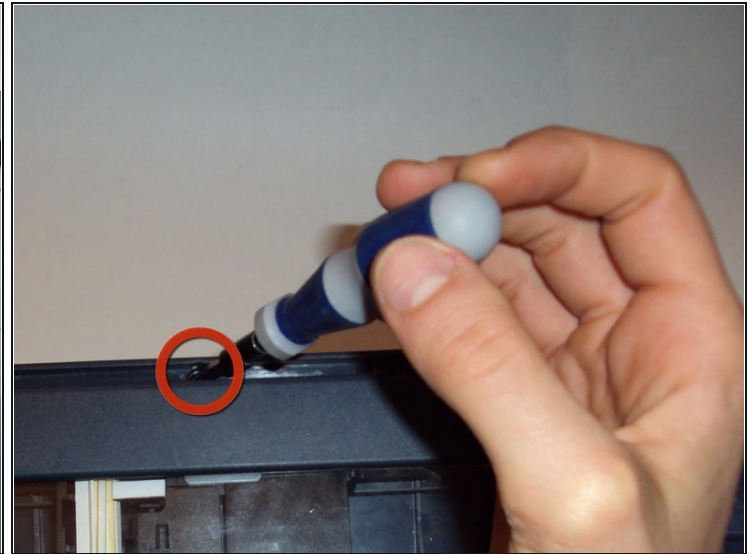
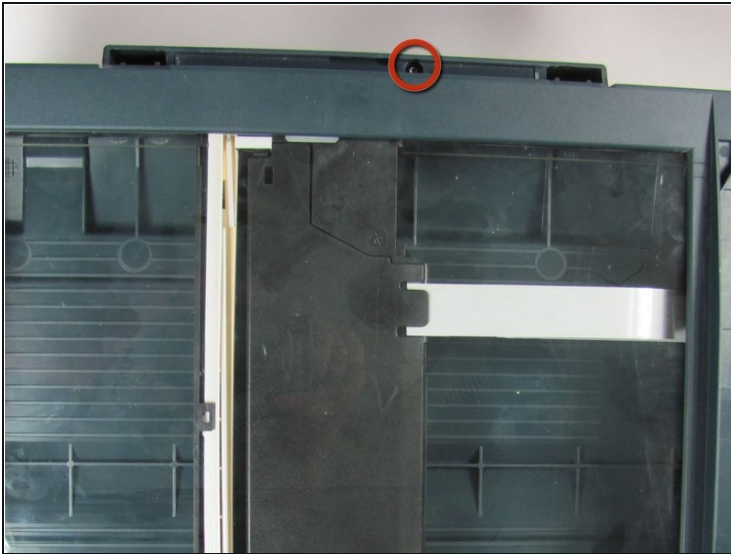


## Step 4



- Lift open the scanner lid and locate a black tab located at the center of the scanner bed.
- Using your finger push (pull on some printers) the tab towards the scanner lid. This will release the scanner lid

## Step 5



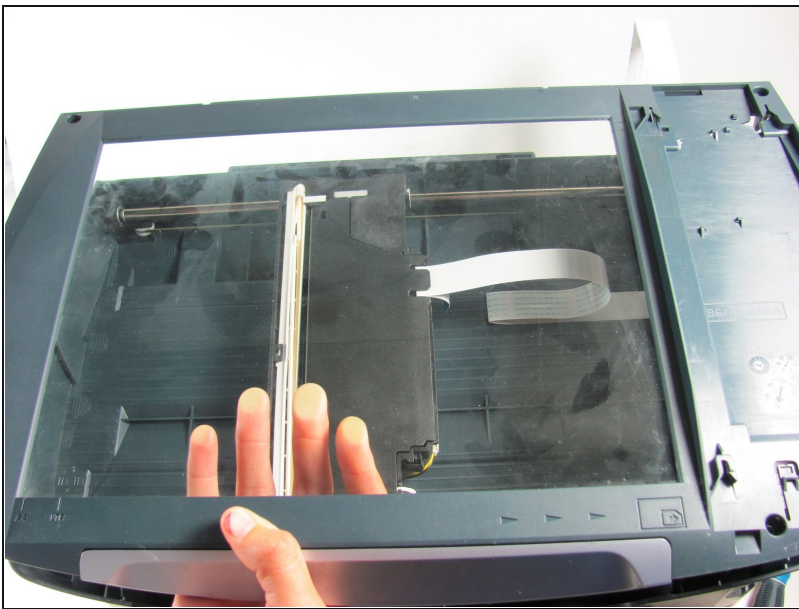
- Once the scanner lid is removed, use the Philips #1(Torx on some printers) Screwdriver to remove the screw.

## Step 6



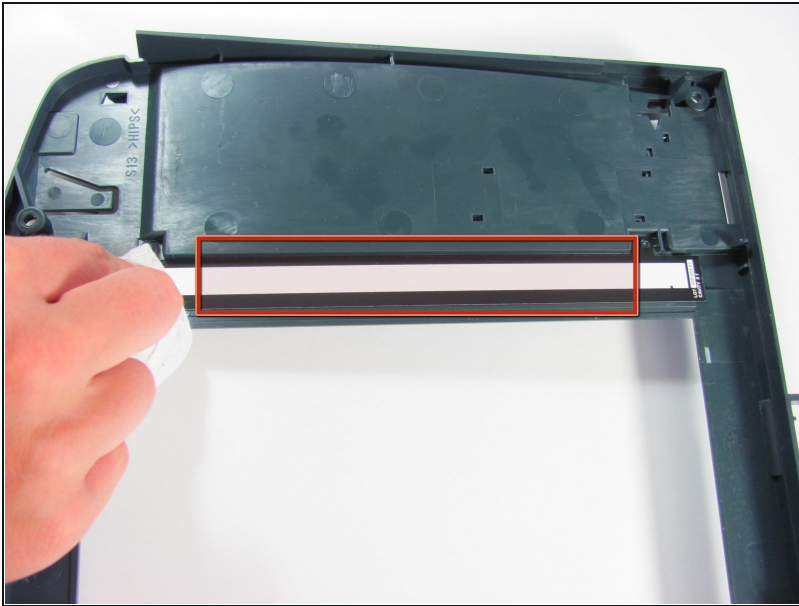
- Remove all four silver screws from the corners of the scanner glass cover with a T10 Torx Screwdriver.
- ⓘ Organization is everything. Remember to have your iFixit Magnetic Work Mat next to you. It will help keep screws organized and in place.

## Step 7



- Once you have removed the four torx screws, gently lift the scanner glass cover from the printer's base.

## Step 8 — How to clean the HP PSC 2410 Photosmart All In One Printer calibration strip



- Turn the scanner glass over and place it on a clean surface.
- Moisten a lint-free cloth with alcohol and gently wipe down the calibration strip.

---

To reassemble your device, follow these instructions in reverse order.