



# Konica Minolta Dimage Z6 LCD Screen Replacement

The LCD screen of the Konica Minolta Dimage Z6...

Written By: Ethan Anderson



# INTRODUCTION

The LCD screen of the Konica Minolta Dimage Z6 has been known to cause issues and need replacement. This guide walks through the steps needed to replace a cracked or damaged LCD screen. Please refer to these links for safety precautions when dealing with [batteries](#) or [broken screens](#).

## 🔧 TOOLS:

Heavy-Duty Spudger (1)

Tweezers (1)

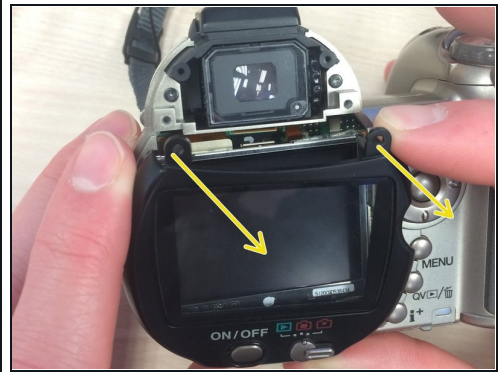
Phillips #000 Screwdriver (1)

## Step 1 — LCD Screen



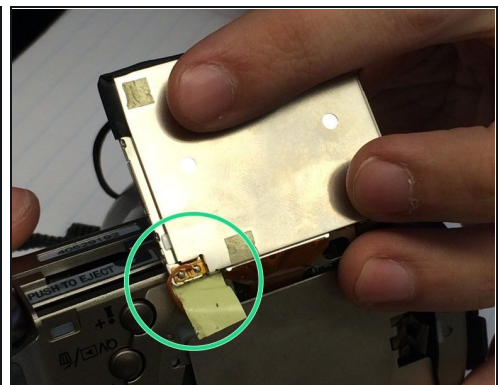
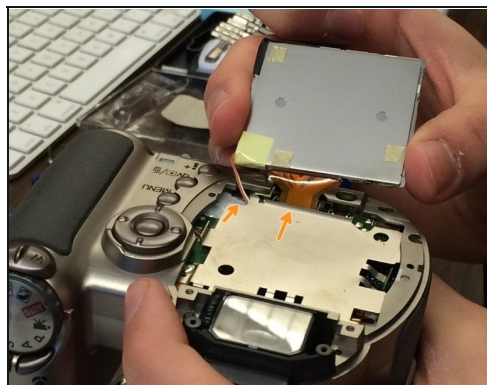
- Push the battery cover in and away from the camera.
- Remove all four batteries.
- Close the battery cover before continuing.

## Step 2



- Use a Phillips #000 screwdriver to remove the two black screws above the LCD screen.  
⚠ The screws are small and fall out easily. You should take them out over a solid surface and set them aside somewhere safe.
- Remove the black view protector.
- Remove the screen cover by applying slight force at the top, then pulling away from the camera.

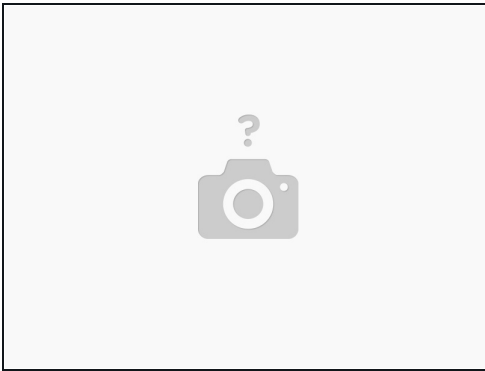
## Step 3



- Carefully use the spudger to pop the LCD screen out of the bracket.
- The LCD screen should still be attached by orange ribbon cable and two wires, one orange and one white.
- Use tweezers to carefully pull the ribbon cable from the logic board, not from the LCD screen.
- Peel back yellow tape on LCD screen to reveal where the two wires are attached. Use tweezers to detach the orange and white wires from the LCD screen.

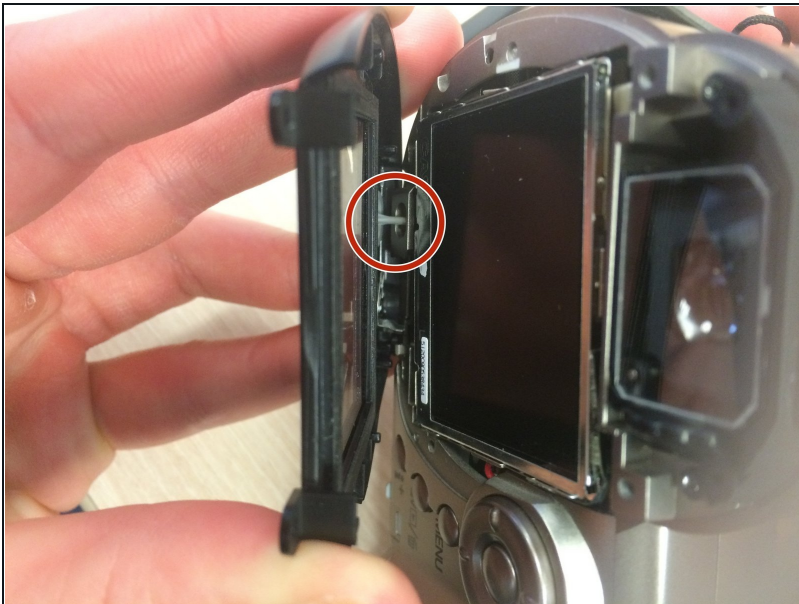


## Step 4



- Attach the wires to the new screen in the same spot they were attached to the old one.
- Attach the new screen's ribbon tape to the logic board underneath the metal plate.
- With the new screen attached, put it in place on the metal plate. You can now replace the screen cover.

## Step 5



- As you start to reassemble, note the grey extension at the bottom of the black screen cover. Apply pressure to the bottom of the cover and slide upwards onto screen.

---

With the main screen cover in place, follow steps 1-3 in reverse to completely reassemble the device. If the new screen was attached correctly, the camera should function as normal.