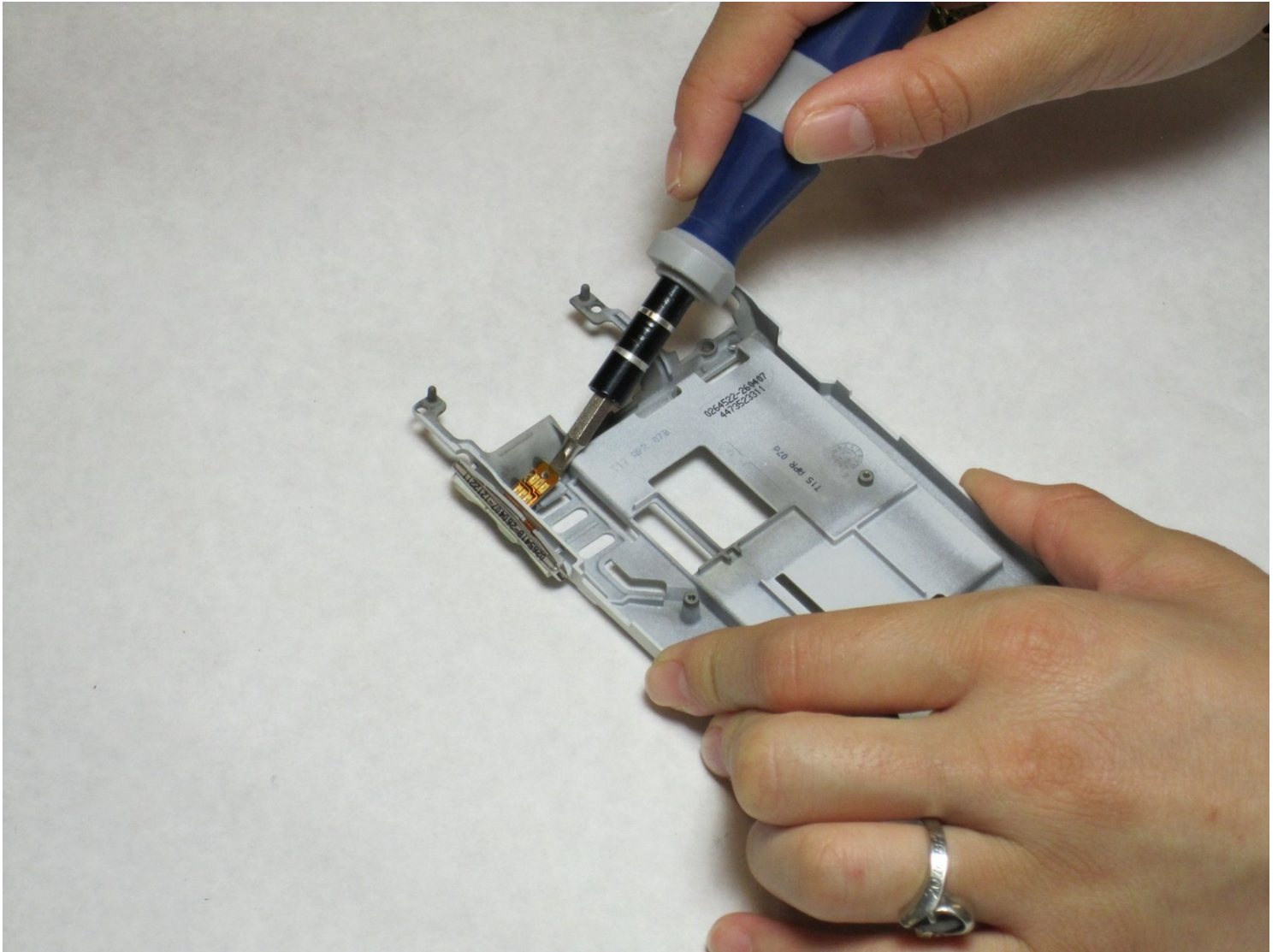




# Disassembling Nokia E61i Volume Control Buttons

Written By: Christopher Patton



---

## TOOLS:

TR7 Torx Security Screwdriver (1)

T5 Torx Screwdriver (1)

T6 Torx Screwdriver (1)

6-in-1 Screwdriver (1)

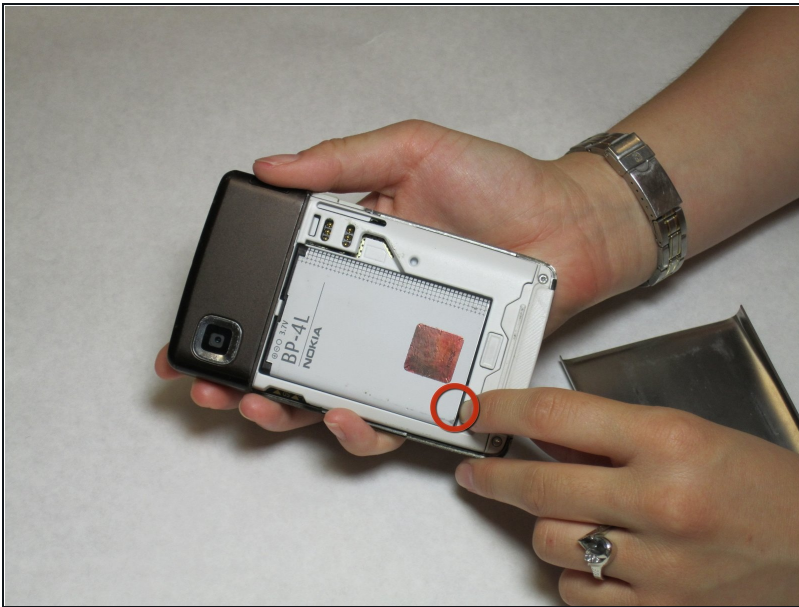
---

### Step 1 — Battery



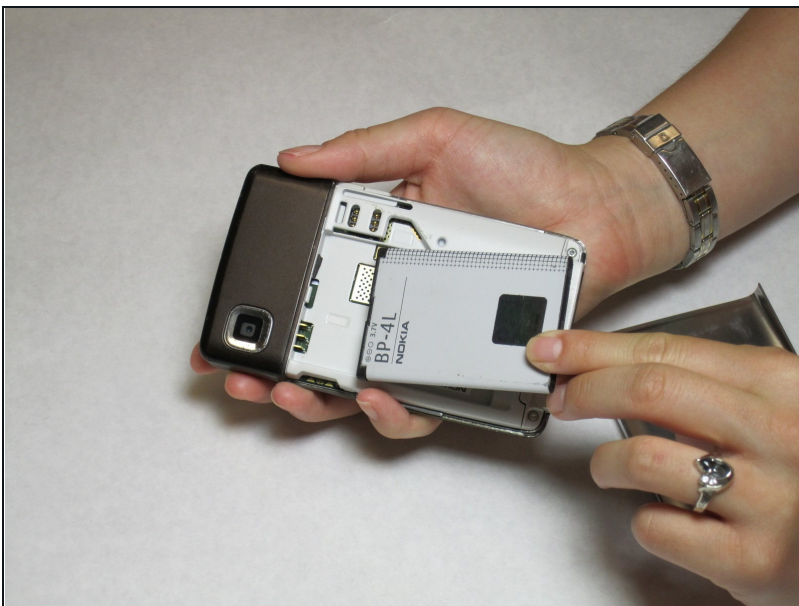
- Remove the back cover to access the battery. Press the tab on the bottom of the cover.
- Slide the back cover downwards off of the phone while pressing the tab down.

## Step 2



- Locate the bottom-left corner of the phone where there is a spot to remove the battery.

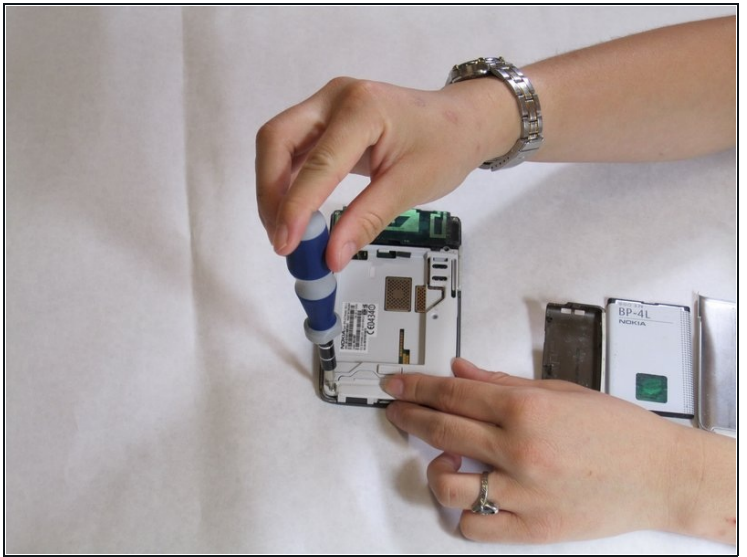
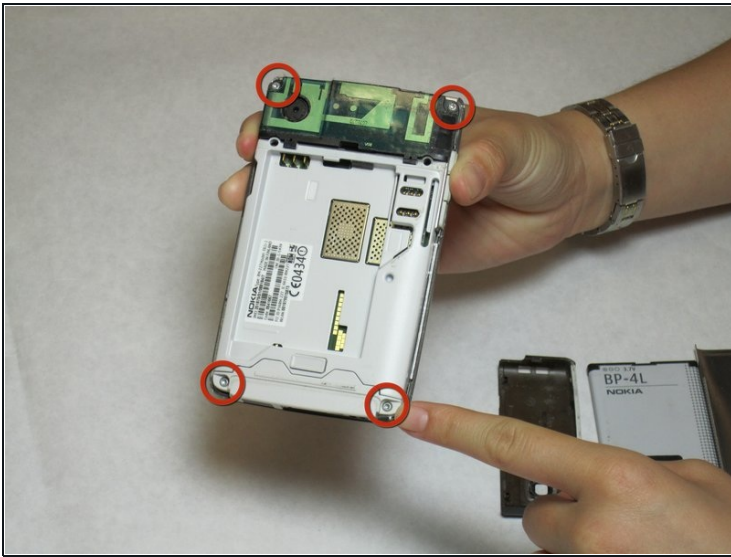
## Step 3



- Lift the battery out using your finger.
- ⓘ The E61i uses a Nokia BP-4L standard battery.



## Step 4 — Front Cover



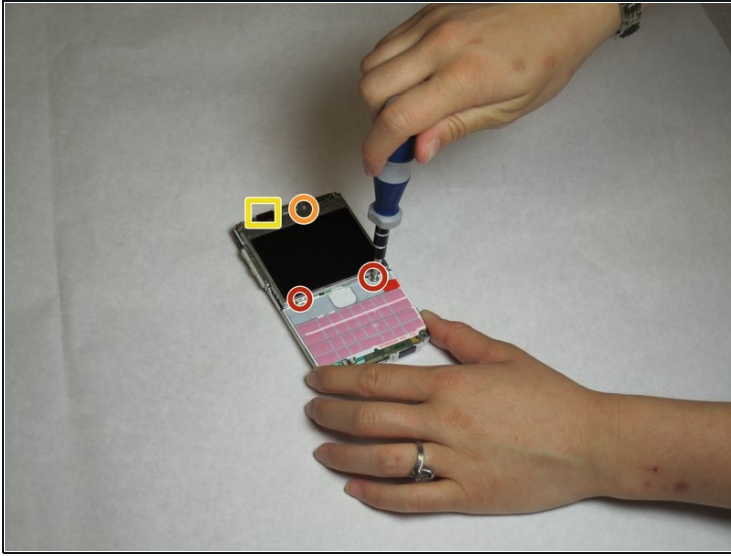
- Remove the four screws that secure the front cover to the rest of the phone using a T7 screwdriver.

## Step 5



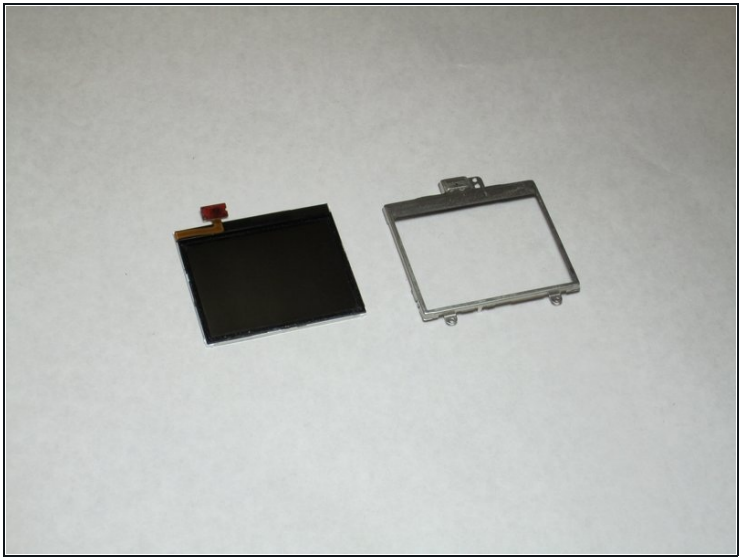
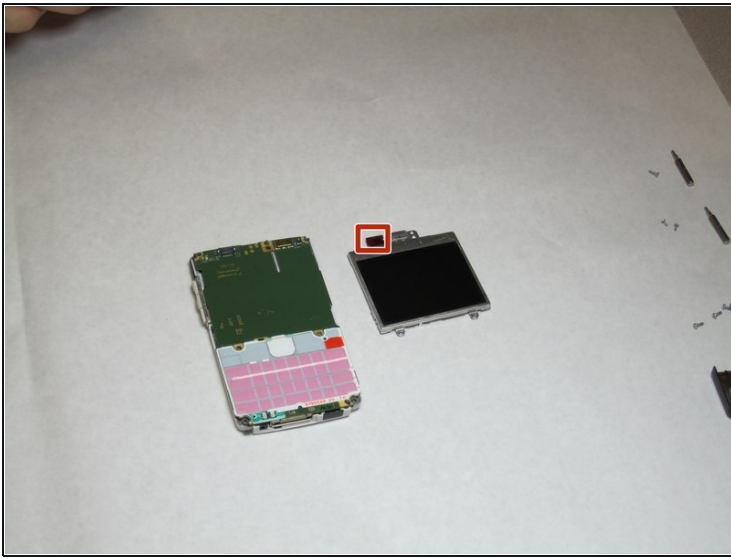
- Remove the cover by pulling it up and off.

## Step 6 — Display



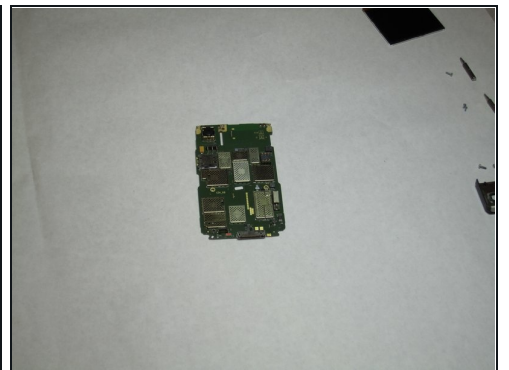
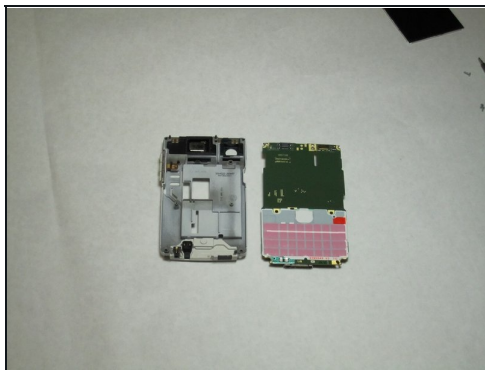
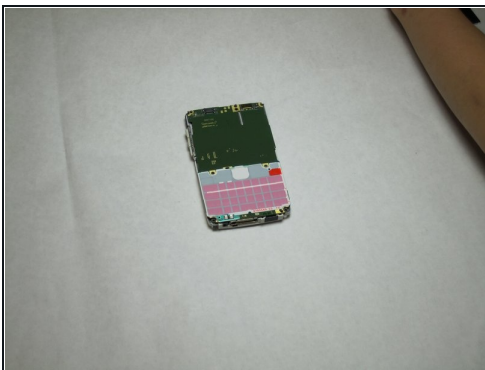
- Take off the casing and keyboard.
- Remove the screws while holding the screen in place using a Torx T6 screwdriver.
- Remove the single screw while holding the screen in place using a Torx T5 screwdriver.
- Lift the ribbon off of the contact with the motherboard.
- ☒ Firmly press the contacts into place to connect the ribbon and the motherboard when reassembling.

## Step 7



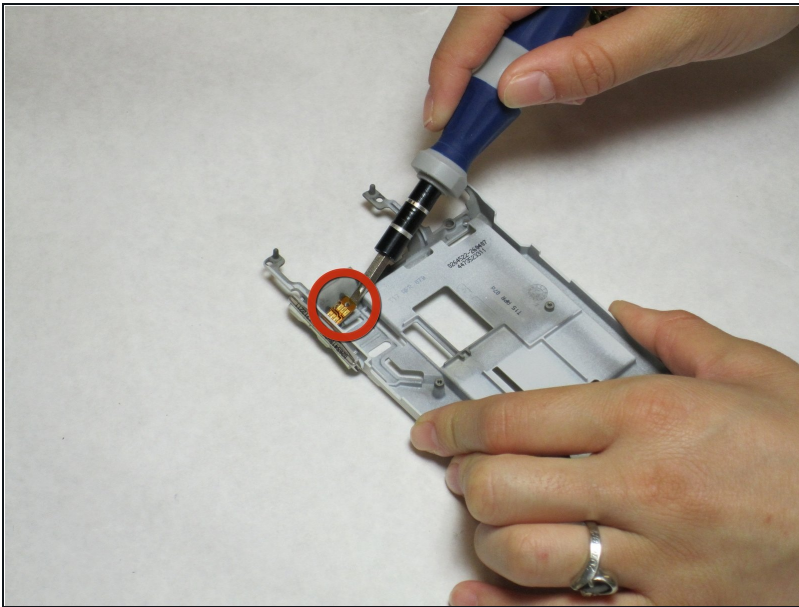
- Gently pull the screen off of the phone.
- Be sure not to rip the sticker that connects the display and the motherboard.
- Pull the silver case off to completely free the cracked or damaged screen.

## Step 8 — Motherboard



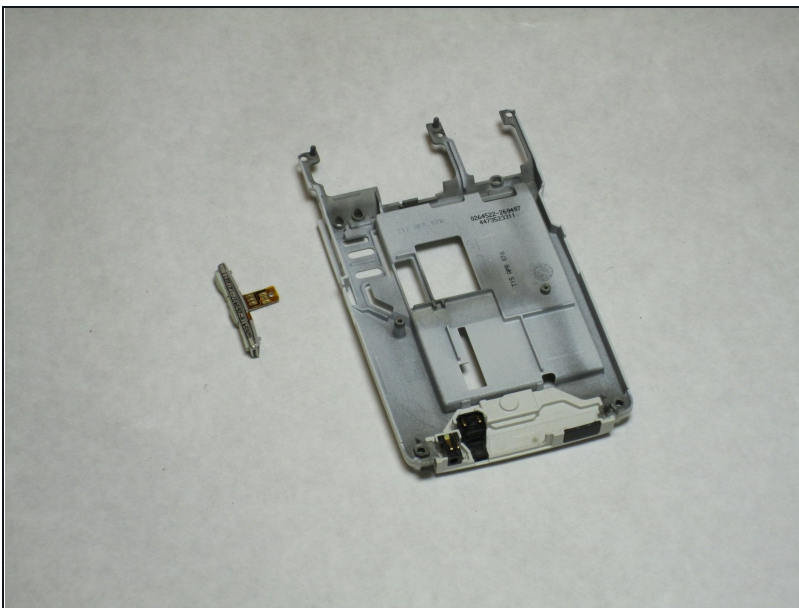
- Pull the green motherboard from the back casing.

## Step 9 — Volume Control Buttons



- The volume control buttons are secured to the frame only by their fit around a small piece of the plastic. Using a small flat-head screwdriver or other flat object, lift the ribbon over this piece of the cover.

## Step 10



- Next, remove the volume control buttons from the cover by pushing or pulling them out away from the interior of the cover.

To reassemble your device, follow these instructions in reverse order.