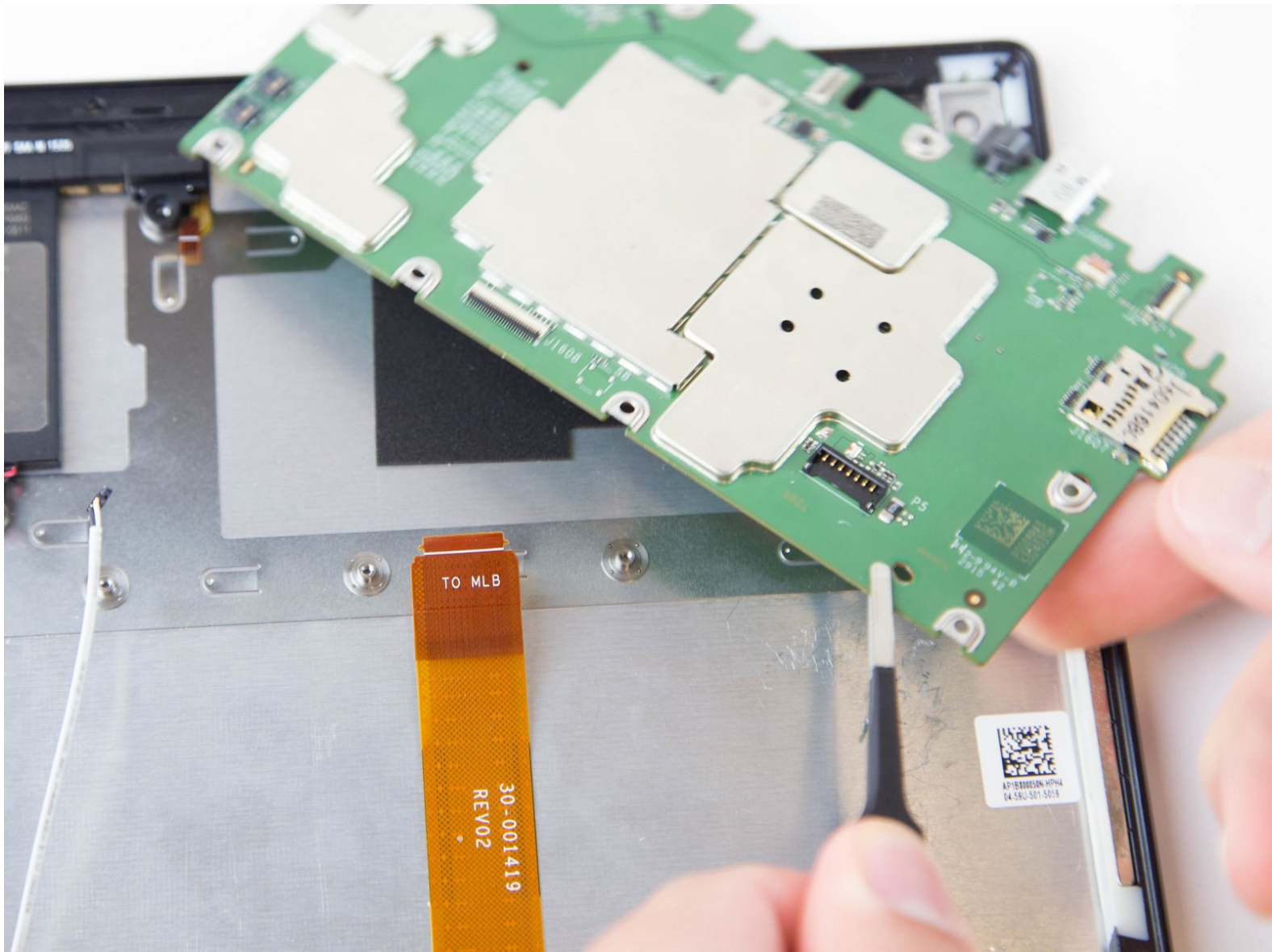




# Amazon Fire HD 10 Motherboard Replacement

Replace the motherboard.

Written By: Jaie Hillery



---

## INTRODUCTION

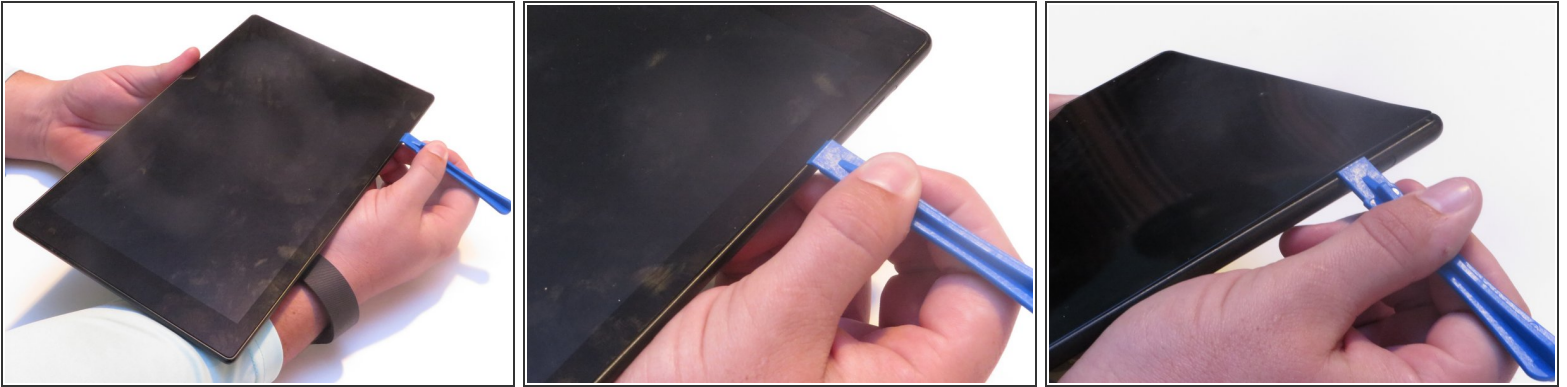
Use this guide to replace the motherboard in your Amazon Fire HD 10.


---

### TOOLS:

- [iFixit Opening Tools](#) (1)
  - [T5 Torx Screwdriver](#) (1)
  - [Tweezers](#) (1)
  - [Spudger](#) (1)
-

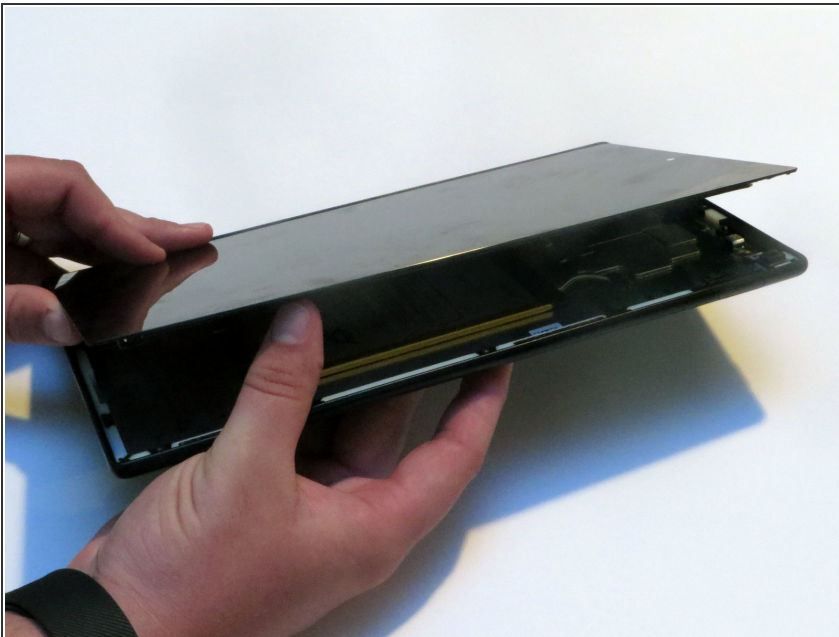
## Step 1 — Screen





 Avoid prying near bottom right hand side due to LCD Connector

- Use a plastic opening tool to pry the screen up in the right hand corner.

## Step 2

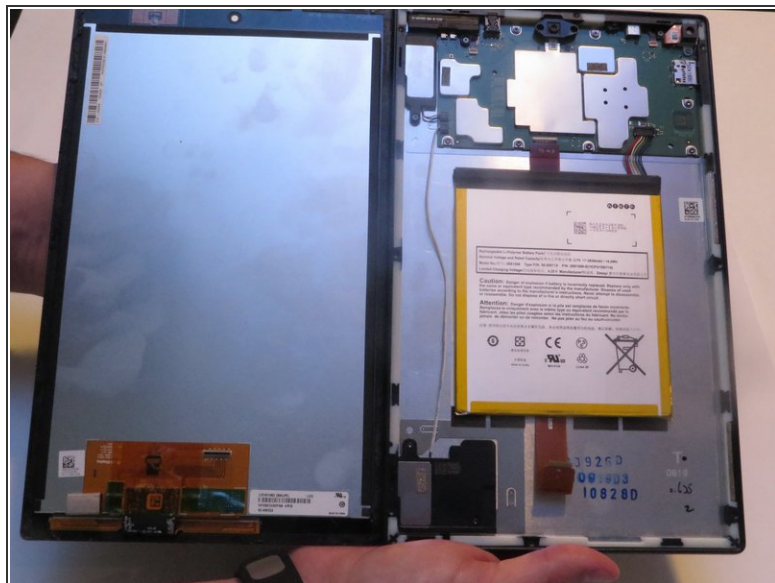


 Do not completely remove the screen yet as there is a ZIF connector connected.

- Lift the screen and digitizer from the case.
-  You may need to use some force due to the glue.



## Step 3



**i** Be mindful of the ZIF connector.

- Disconnect the ribbon connector from the digitizer side using your hands or the plastic opening tool.

## Step 4



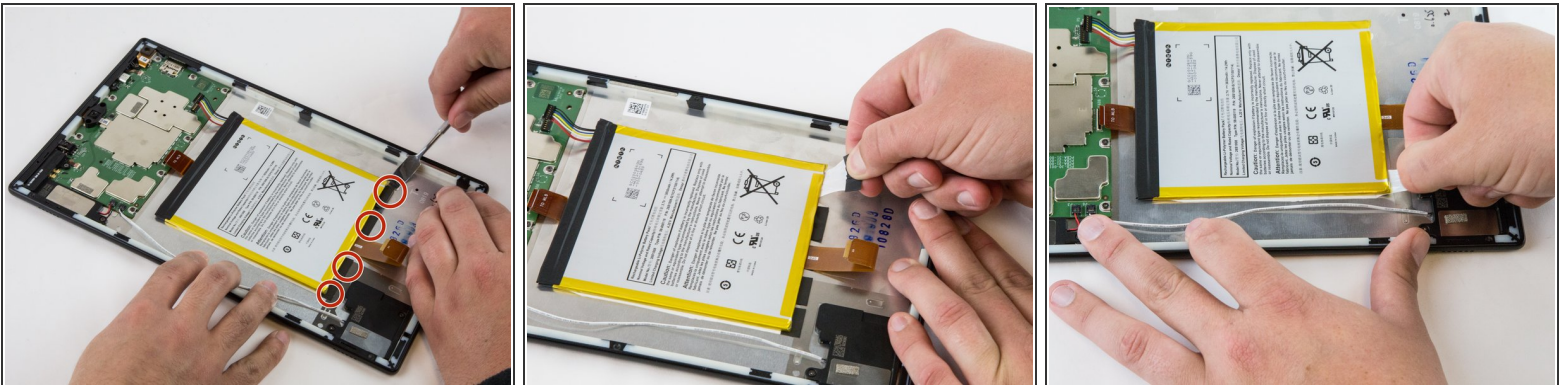
- Remove the screen and digitizer from the case completely.

## Step 5 — Battery



- Locate the power cable that links the battery to the motherboard.
- Carefully unplug the battery power cable to disconnect the battery from the motherboard.
- i* The third image shows what it should look like with the battery power cable is disconnected.

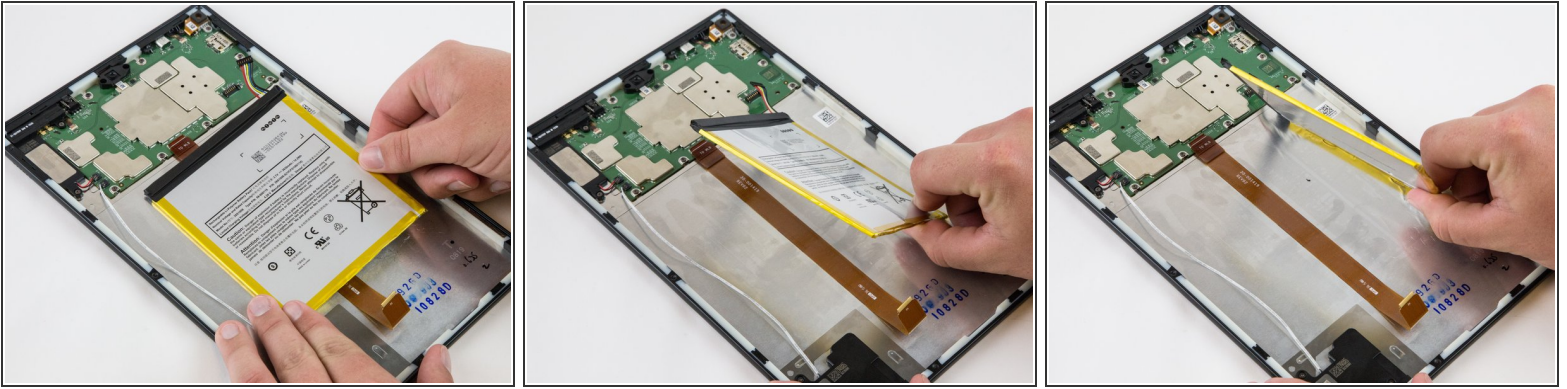
## Step 6




- Begin by locating the double sided pull tape locations.
- !* Do not lift on the battery when doing the following step. You will bend it. It is very pliable.
- Pull the black soft tabs to release the tape's adhesion.
- i* Make sure you pull the tabs slowly and continuously away from the case until the adhesive is completely out.
- Do this to all 4 tabs until the battery is completely free of adhesion to the device's backing.



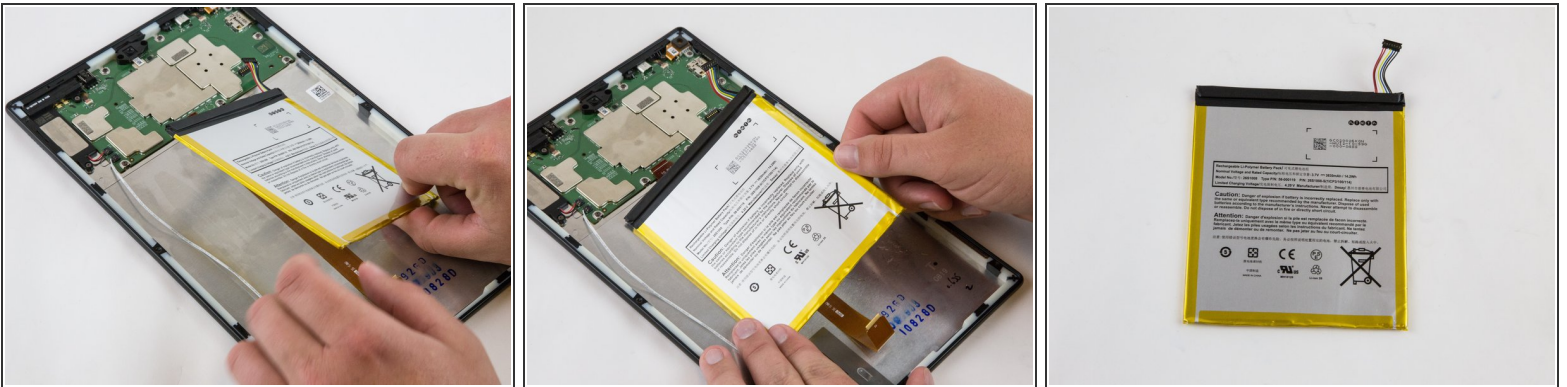
## Step 7



 Make sure all the adhesive is removed before trying to lift the battery from the case.

- After the battery is totally free of any adhesion, simply lift the battery from the case.

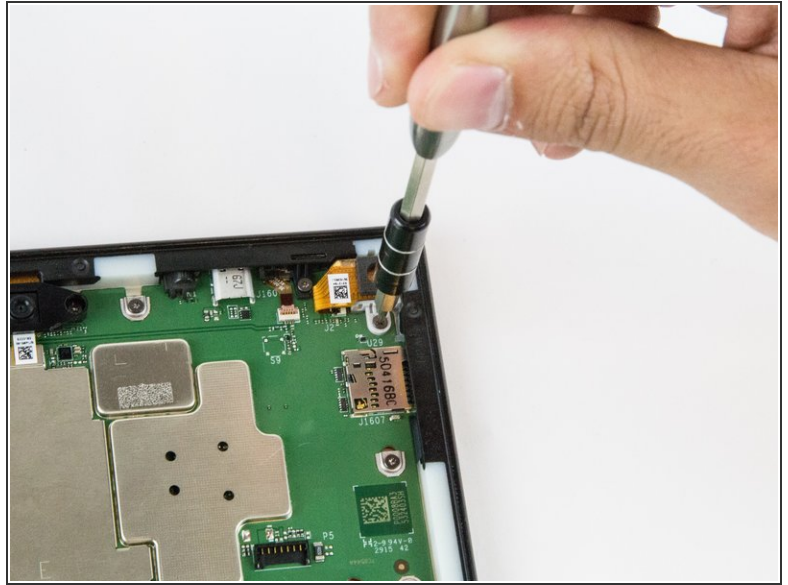
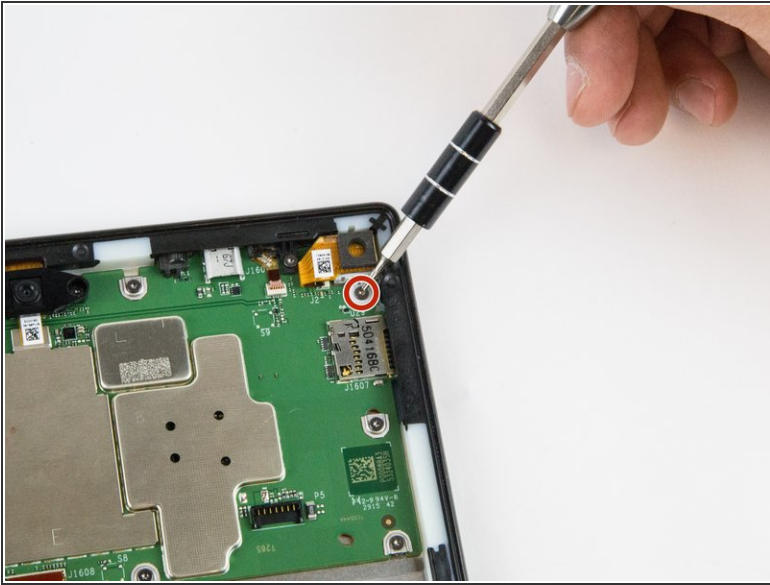
## Step 8



- Inspect battery for any leakage.

 Please follow all U.S. regulations and laws when disposing or recycling the battery.

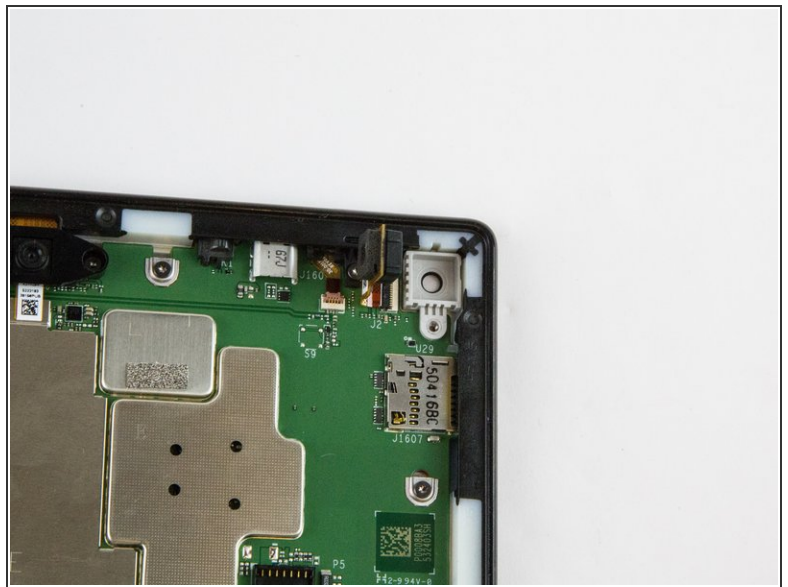
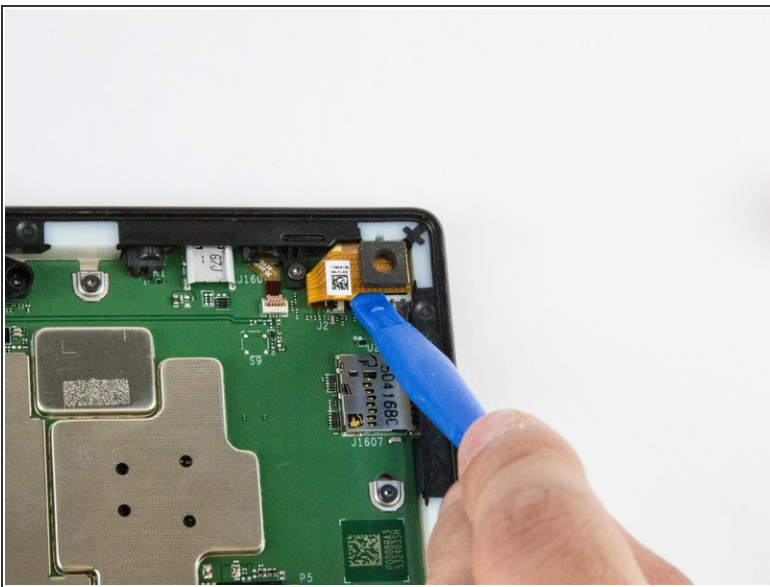
## Step 9 — Rear Facing Camera



- Remove the single T5 Torx screw at the base of the camera.

☞ Once removed, place the screw aside in a safe location.

## Step 10

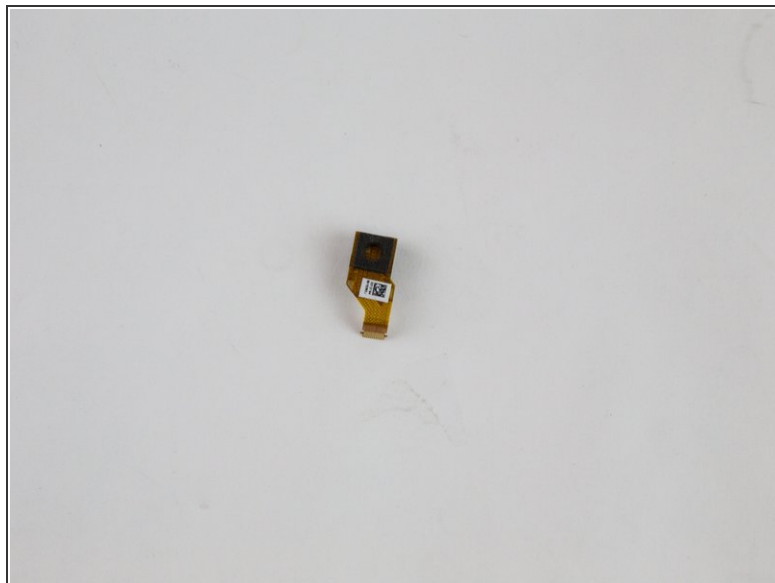
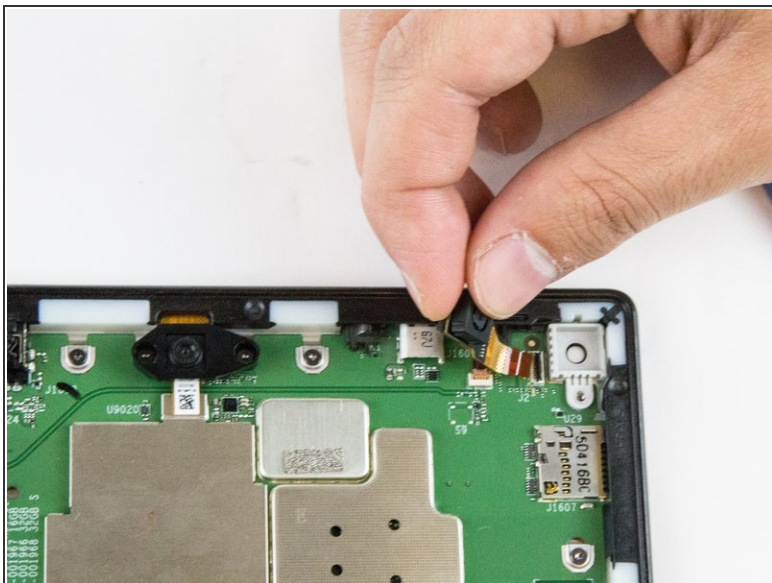


- Lift the camera from the case using the plastic opening tool.

**i** The camera is still connected to the motherboard via the ZIF connector.

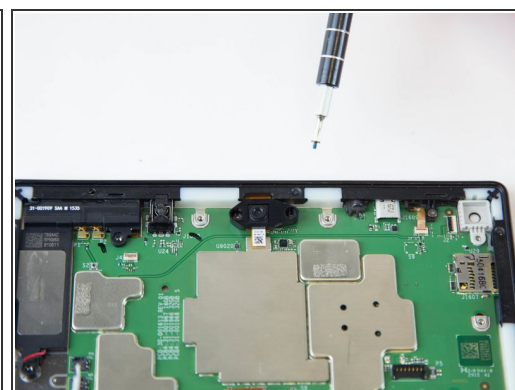
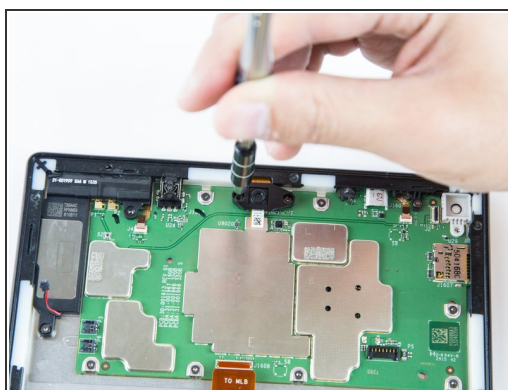
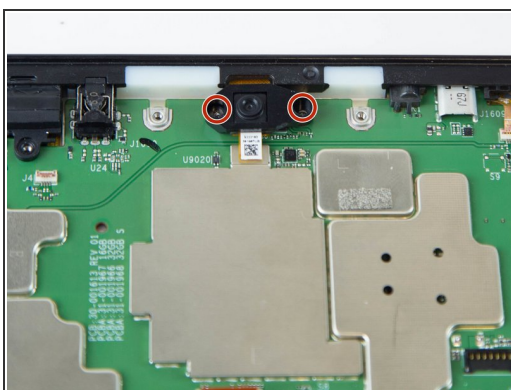


## Step 11



- Gently grab the camera and pull to remove.
- The camera is now free from the motherboard.

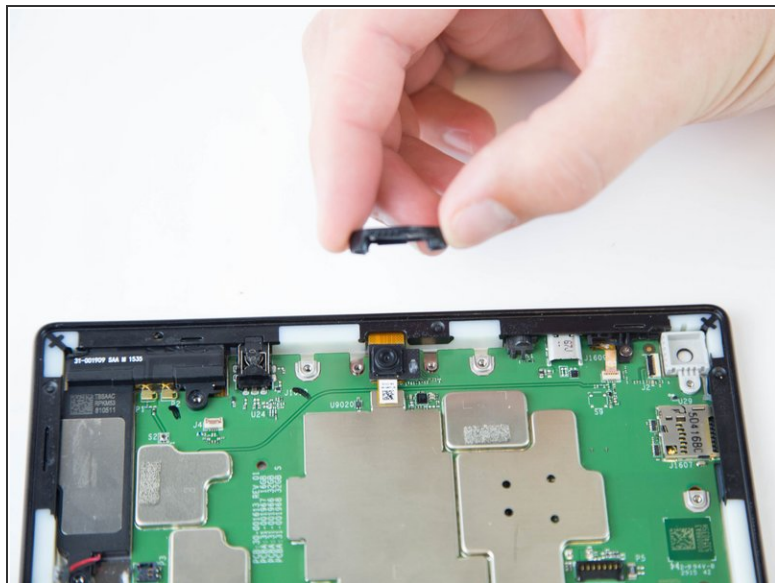
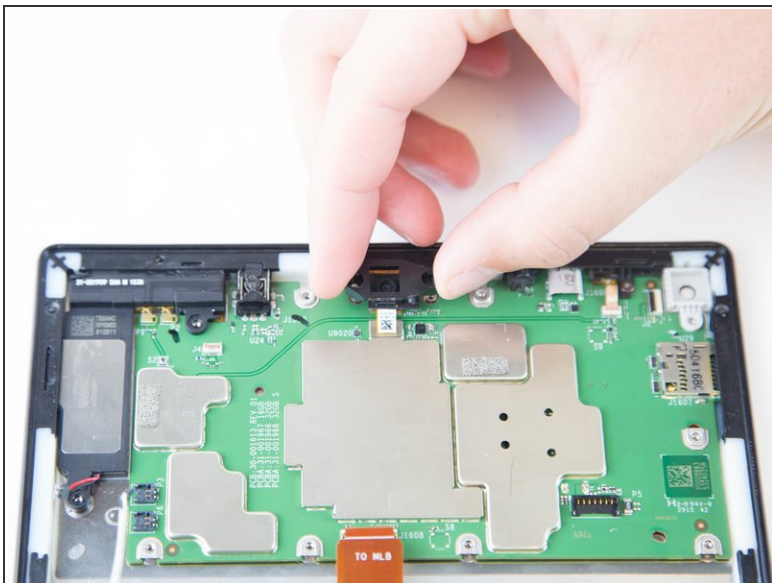
## Step 12 — Front Facing Camera



- Remove the two screws from front facing camera using the T5 Torx Screwdriver.
- ⓘ Make sure you place the screws in a safe location nearby.

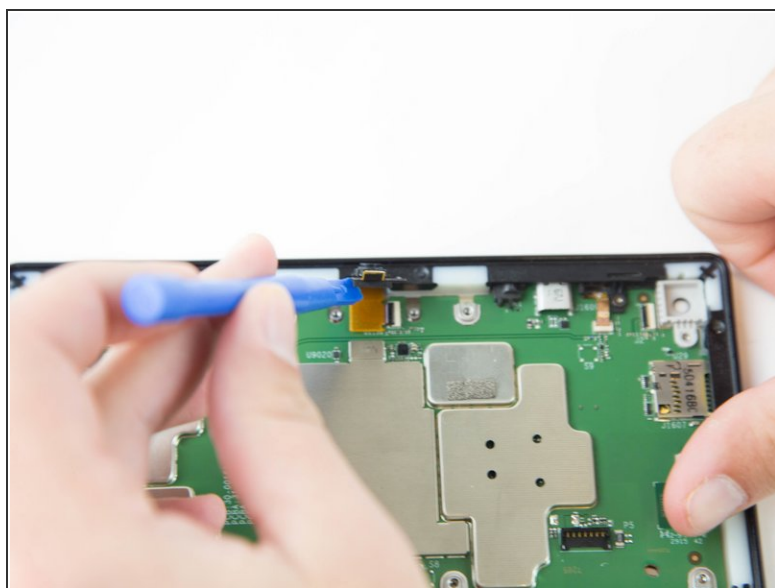
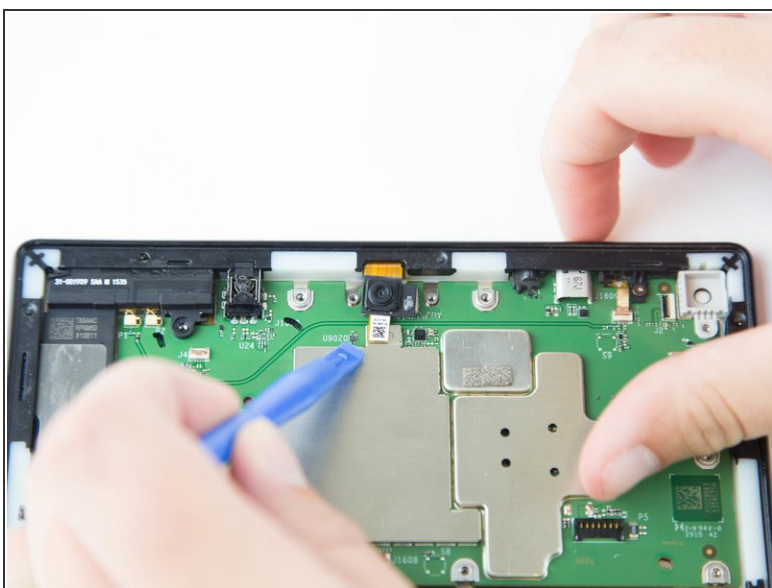


## Step 13



- Lift the black plastic cover once the screws are removed.
- Place aside for later reassembly.

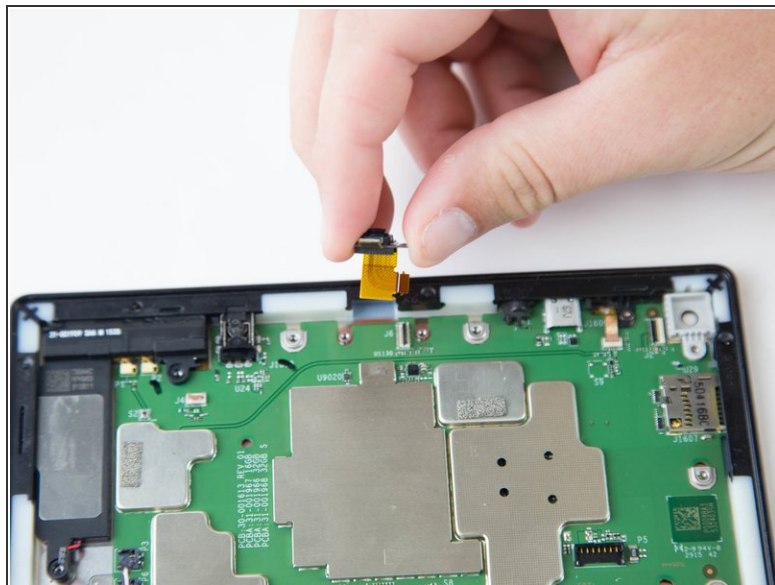
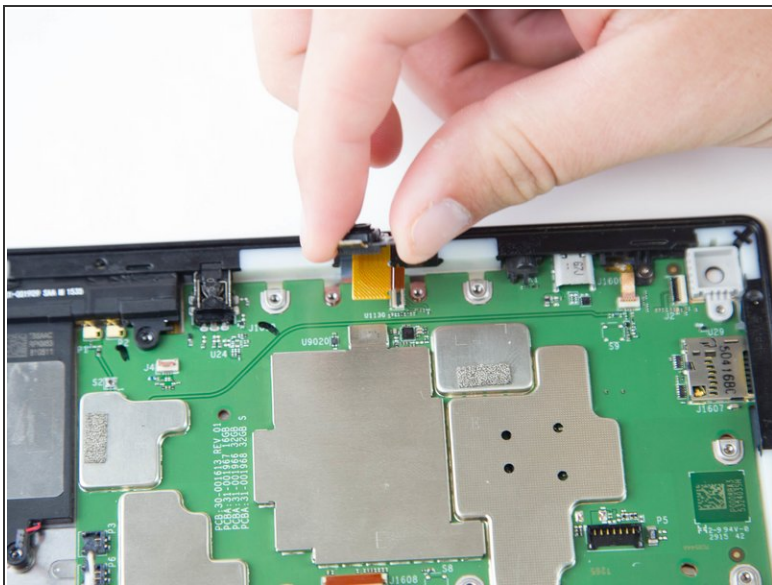
## Step 14



- Detach the connector using a plastic opening tool or spudger.

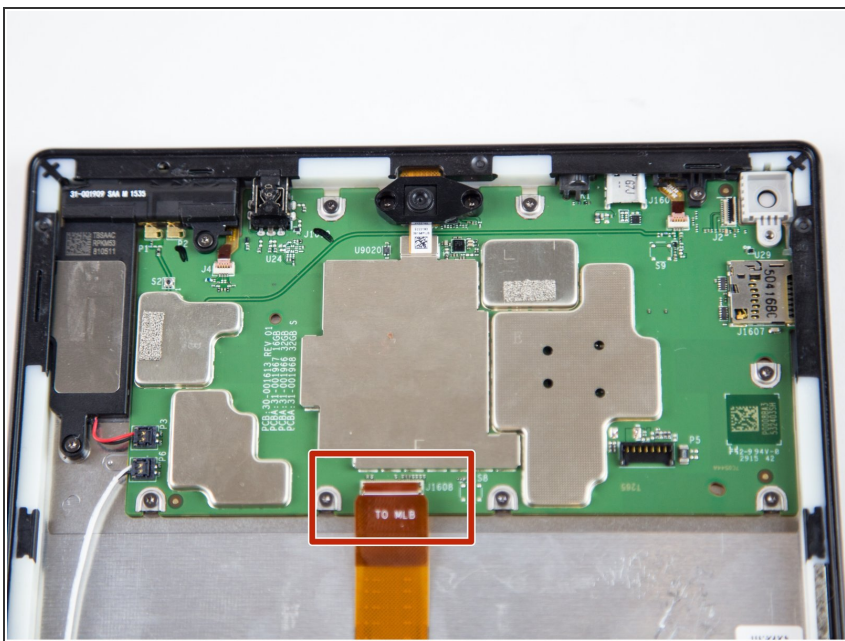
 The camera is still connected to the motherboard.

## Step 15



- Grip the camera and lift up to detach the ZIF connector from the motherboard.

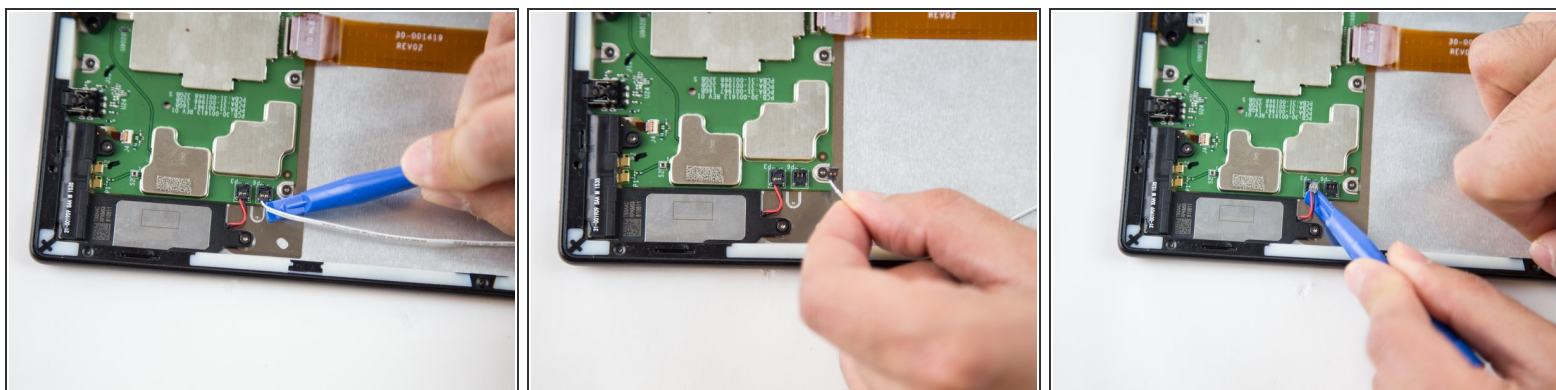
## Step 16 — Motherboard



- Lift the ZIF connector up to disconnect from the motherboard.

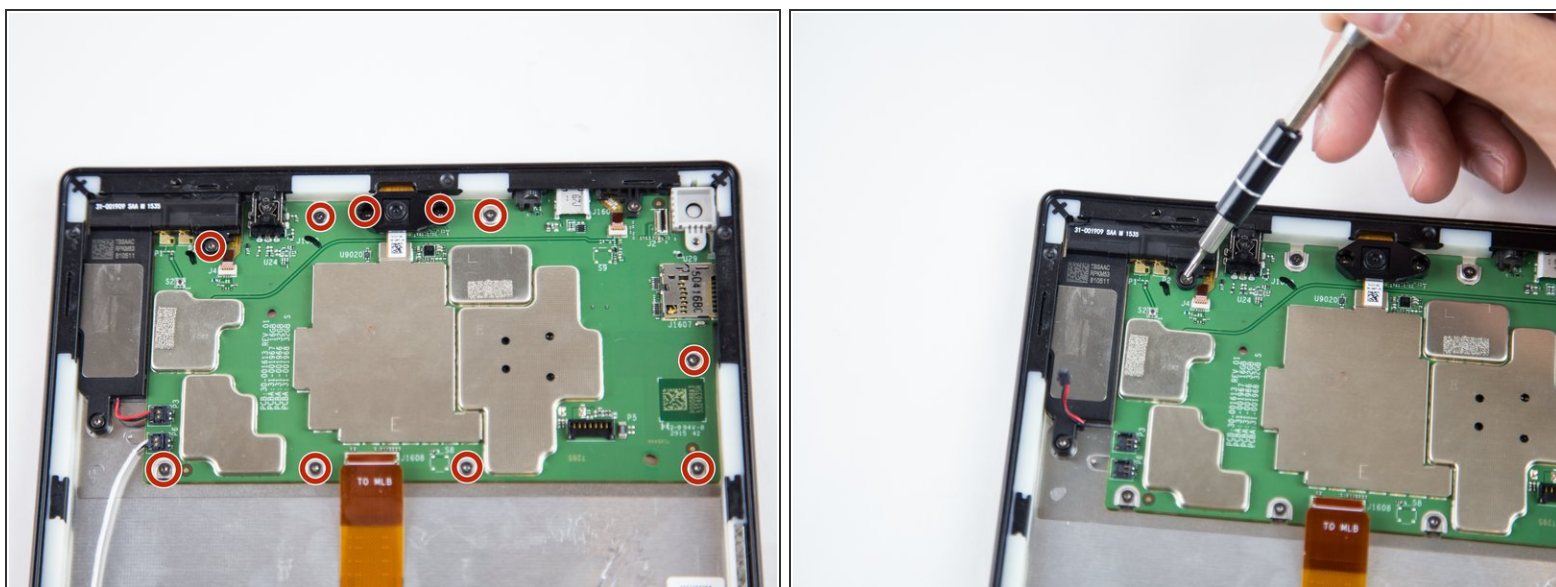


## Step 17



- Disconnect the connectors using the plastic opening tool.

## Step 18

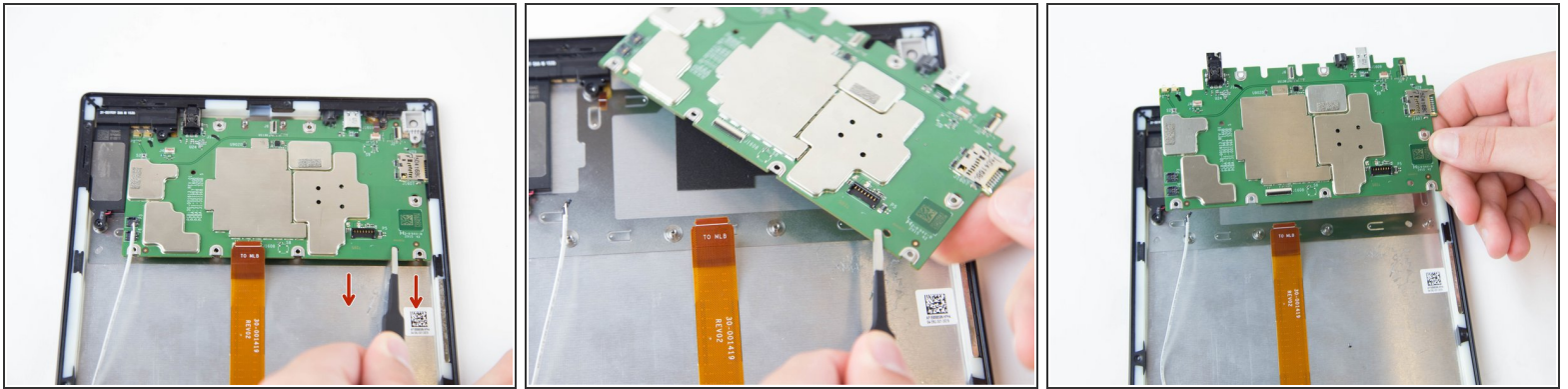


- Remove the ten T5 Torx screws securing the motherboard to the case.

- ⓘ Keep the screws together in a safe place for reassembly.



## Step 19



- Lift and pull the motherboard down, gently, towards the case using the tweezers.

To reassemble your device, follow these instructions in reverse order.