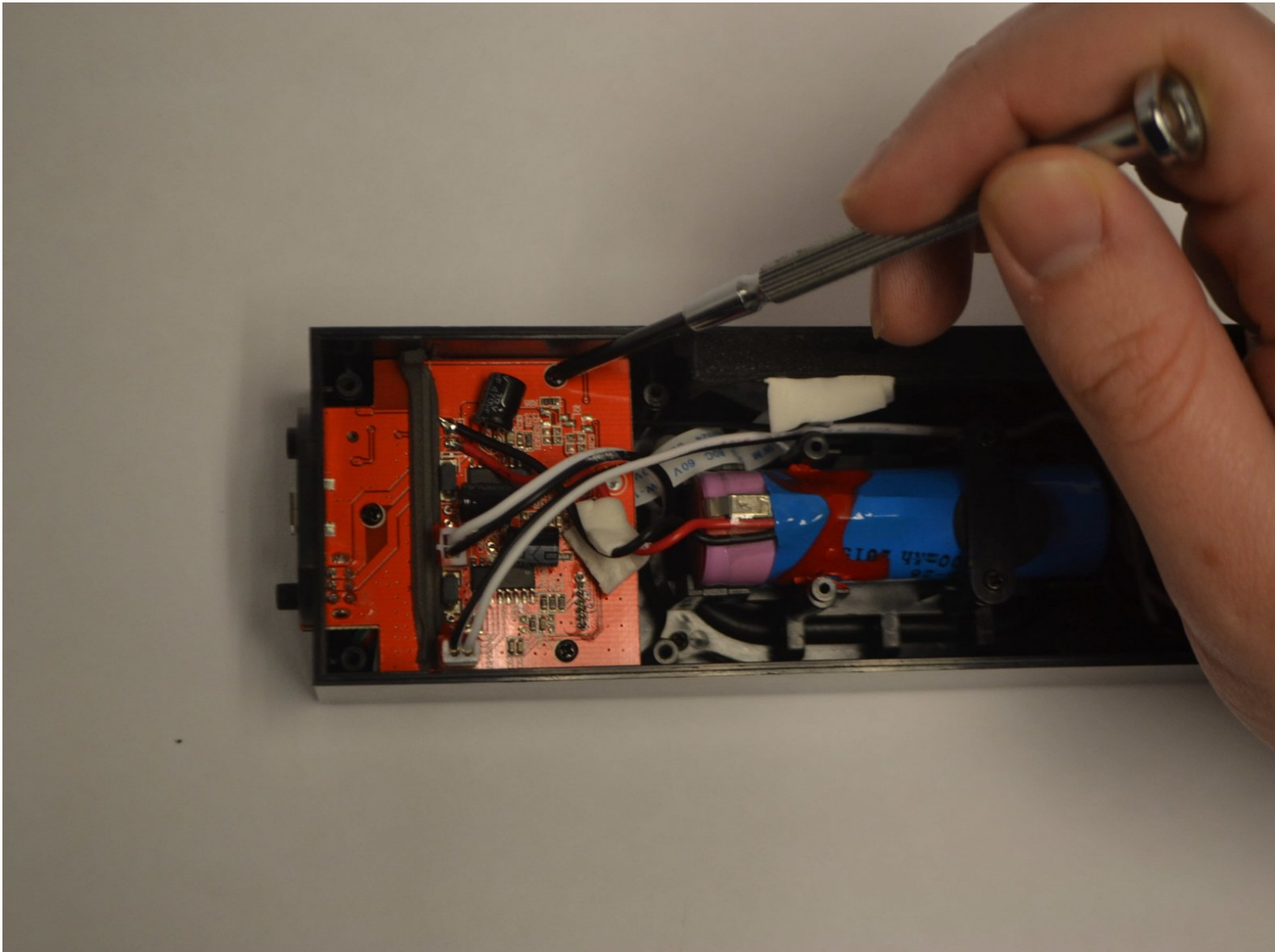




# Photive Hydra Bluetooth Connector Replacement

This guide will demonstrate the steps on how to remove and replace the bluetooth connector.

Written By: Matthew Knight



---

## INTRODUCTION

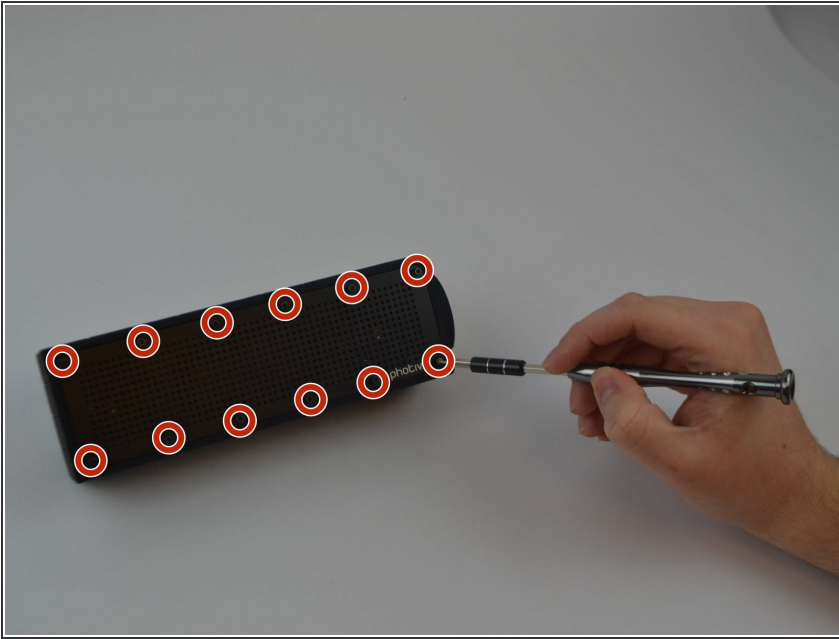
If your Photive Hydra is having trouble connecting to another Bluetooth device, there may be an issue with the Bluetooth connector. If the steps listed seem too difficult, you can still use your device as a speaker using the AUX port on your speaker.

---

### TOOLS:

- [Phillips #1 Screwdriver](#) (1)
  - [iFixit Opening Tools](#) (1)
  - [1.5mm Hex Screwdriver](#) (1)
  - [Soldering Iron](#) (1)
-

## Step 1 — Face Plate and Back Plate



- Unscrew all twelve Hex Head 1.5 (Length-3/8", Head- 1/8") screws using a 1.5mm hex screwdriver.

## Step 2



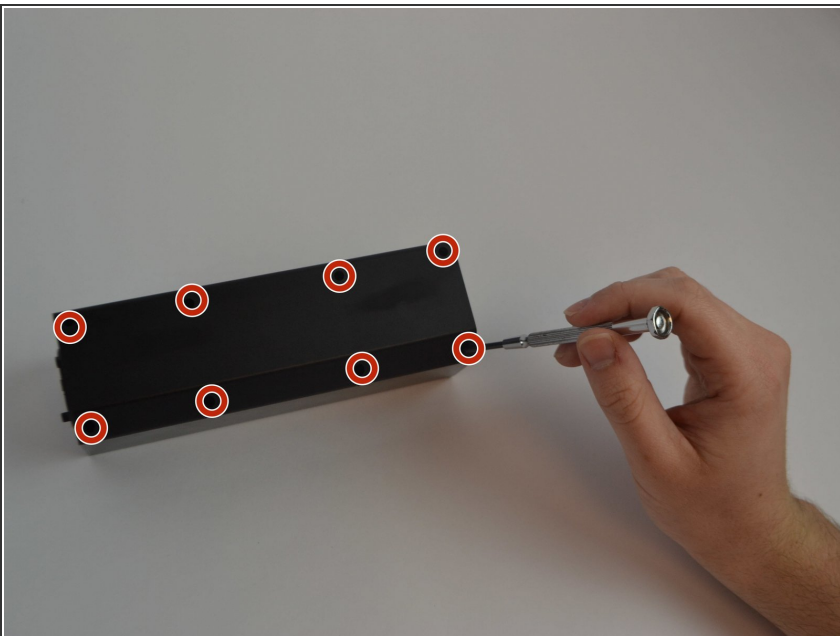
- Use a plastic opening tool to pry off the face plate.

### Step 3



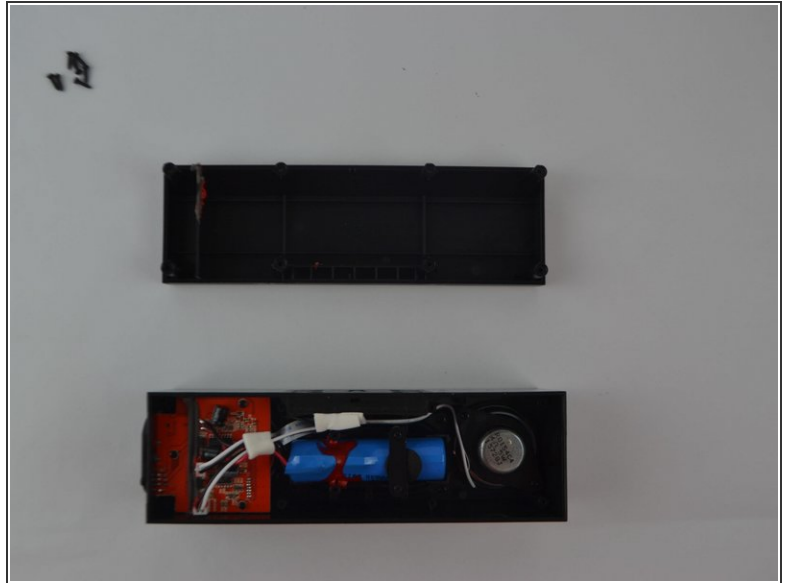
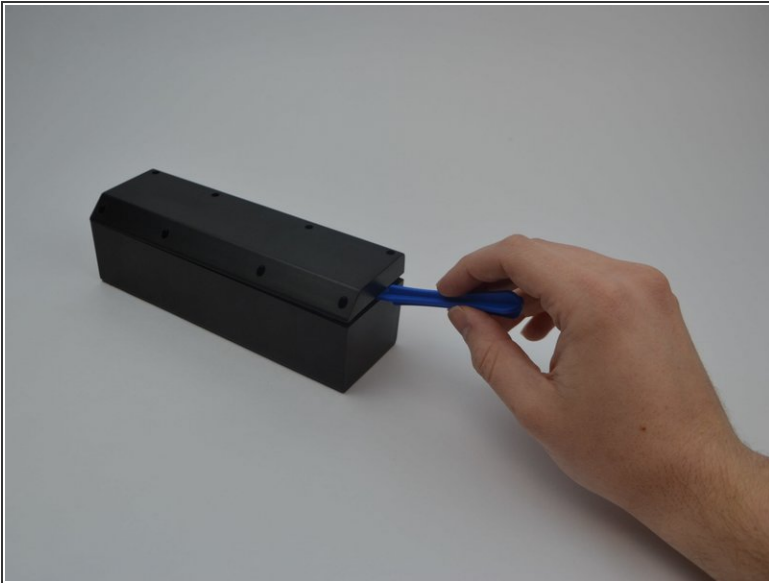
- Remove the rubber casing by using your fingers to pull off. Be sure not to tear or rip the rubber casing.

### Step 4




- Flip the device upside down and remove all eight Phillips (Length-3/8", Head-1/8") screws using a standard #1 Phillips screwdriver.

## Step 5

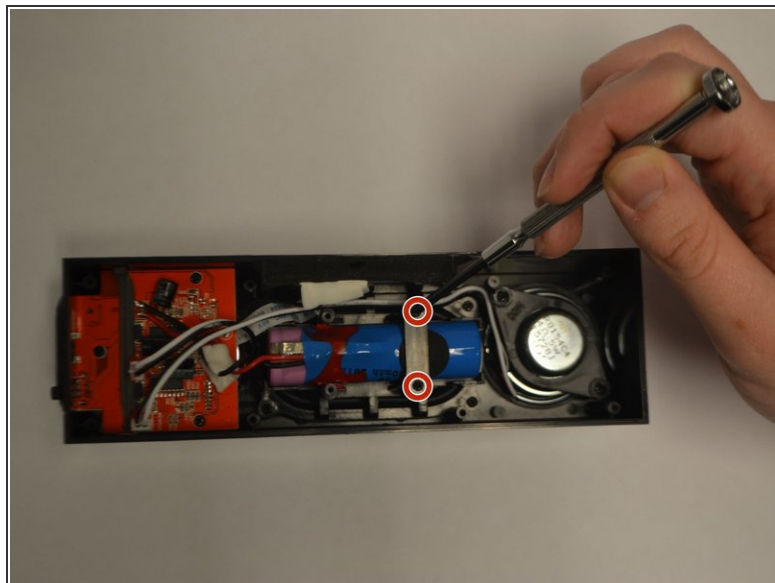
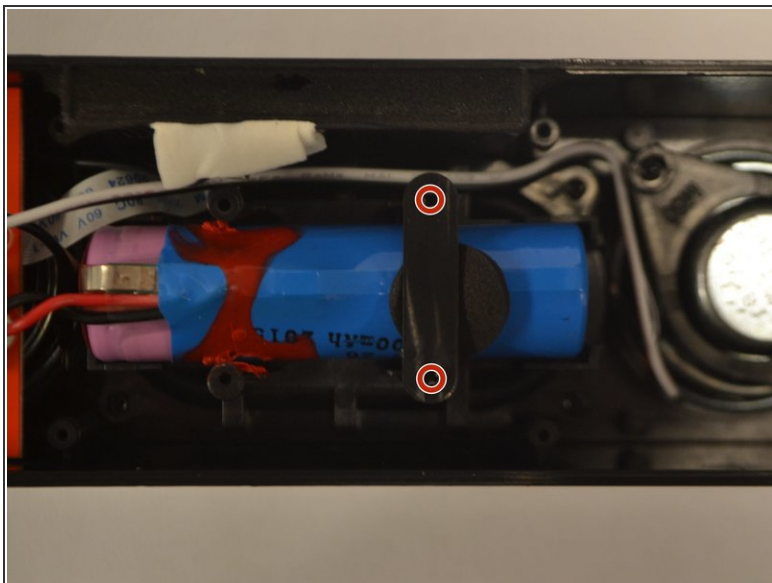


- Use plastic opening tool to pry off back plate.
- Move the plastic opening tool along the the device to further pry open the device.

 Be careful when taking this plate off. You may accidentally damage the water proof seal.

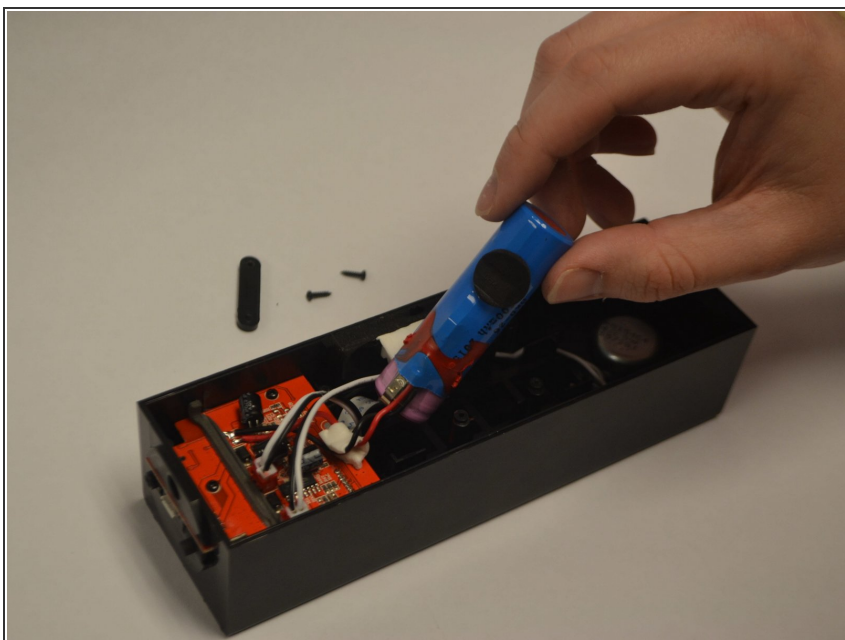


## Step 6 — Battery (Prerequisite)



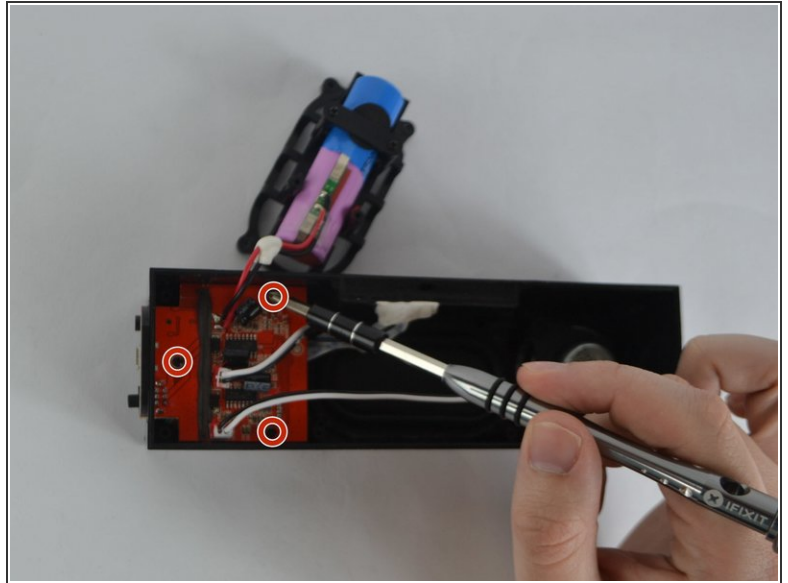
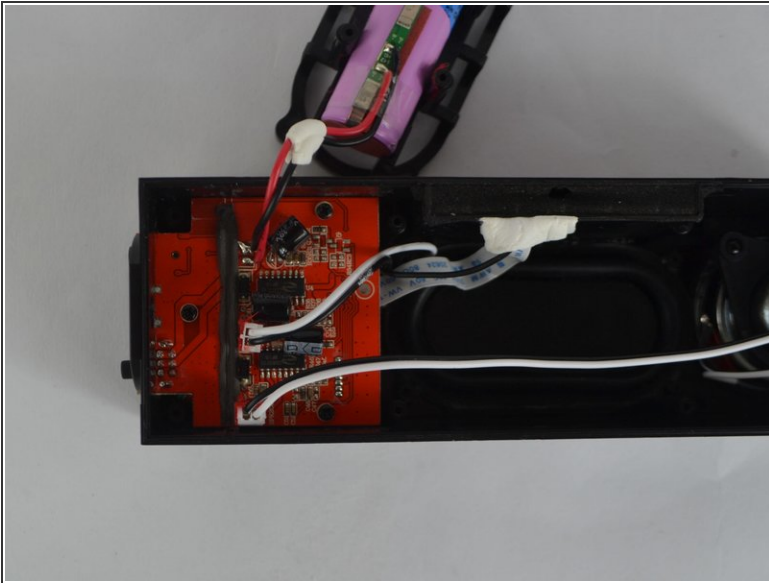
- Identify the two Phillips (Length-5/16", Head-1/8") screws holding the battery in place and remove them using a #1 screwdriver.

## Step 7



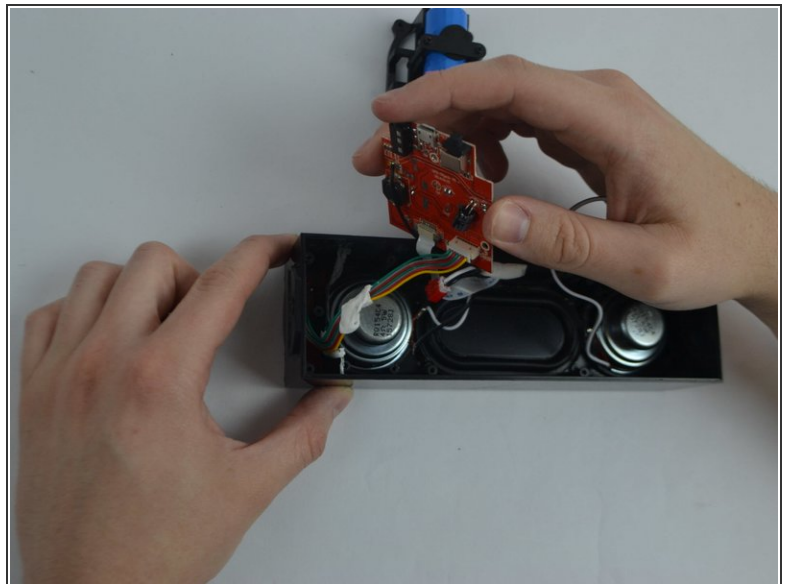
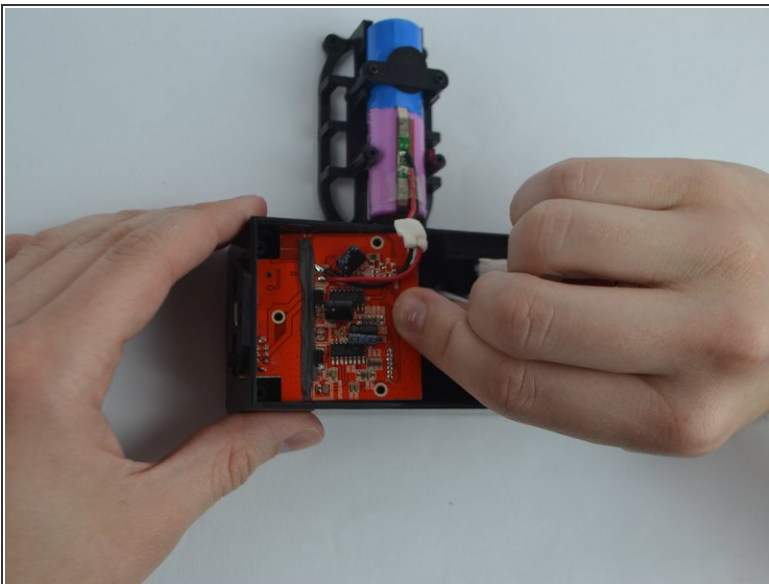
- Remove the ICR18650-26M battery from its position by pulling upwards and out of the casing.

## Step 8 — Bluetooth Connector



- Identify the motherboard and the three Philips (Length-1/8 ,Head-1/8) screws and remove them using a #1 Phillips screwdriver.

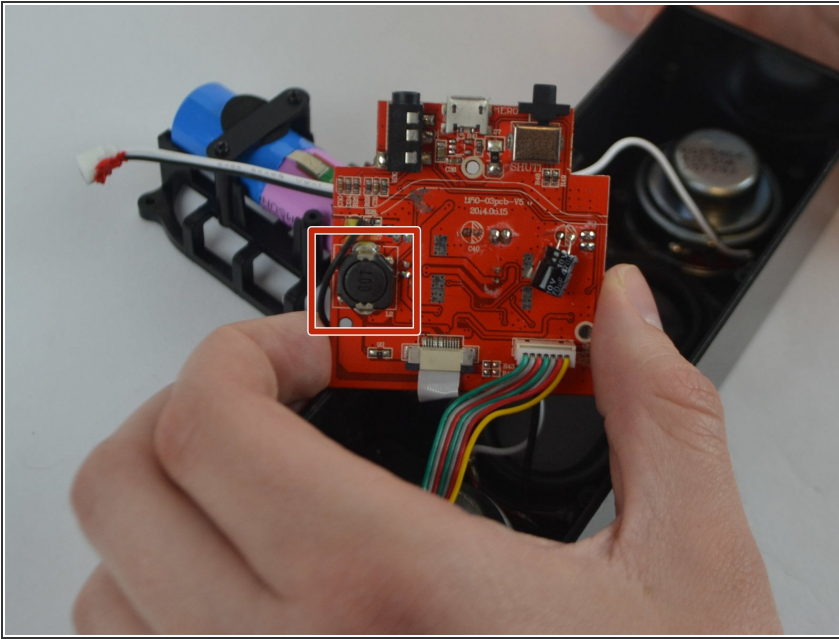
## Step 9



- Pull the motherboard up and out to dislodge it.

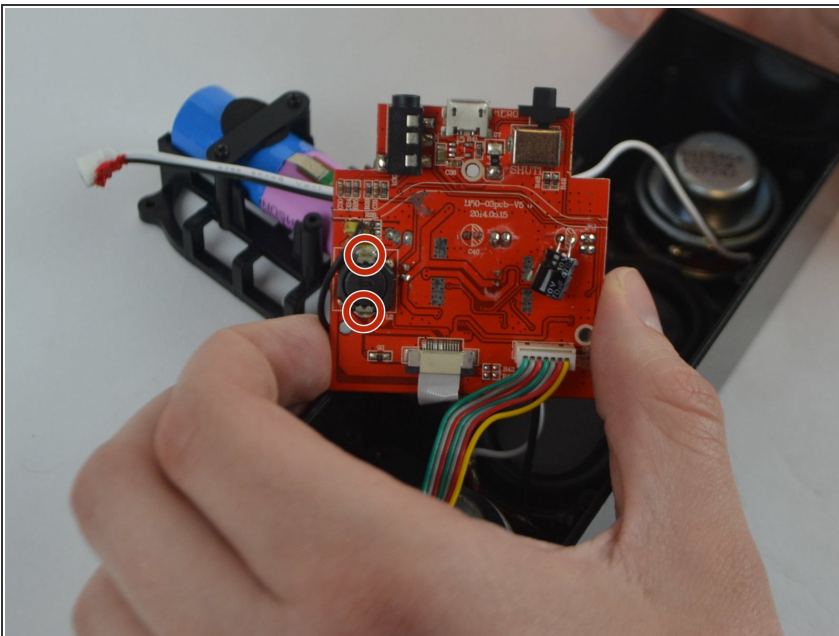
⚠ Do not fully remove your motherboard to prevent any unwanted severing of connections.

## Step 10



- Identify the Bluetooth connector device.

## Step 11



- The two solder points shown are to be removed by use of a soldering gun. Remove and replace the component with a functioning connector device. Refer to the link below for soldering techniques. [How To Solder and Desolder Connections](#)



To reassemble your device, follow these instructions in reverse order.